



USER'S MANUAL

Kids Scooter TQ10033

THIS INSTRUCTION BOOKLET CONTAINS **IMPORTANT** SAFETY INFORMATION. PLEASE READ AND KEEP FOR FUTURE REFERENCE.

Please give us a chance to make it right and do better!

Contact our friendly customer service department for help first.

Replacements for missing or damaged parts will be shipped ASAP!

Follow Costway



Contact Us!

Do NOT return this item.

Contact our friendly customer service department for help first.



Before You Start

Please read all instructions carefully and keep it for future reference.

Warnings:

Attention! Use it with protective equipment.

Attention! Not use it in the traffic.

Attention! The product is not suitable for the children under 3 years.

General Warnings:

- ⚠ The product must be installed and used under the supervision of an adult.
- ⚠ Read through each step carefully and follow the proper order.
- ⚠ Remove all packaging, separate and count all parts and hardware.
- ⚠ Please ensure that all parts are correctly installed, incorrect installation can lead to a danger.
- ⚠ We recommend that, where possible, all items are assembled near to the area in which they will be placed in use, to avoid moving the product unnecessarily once assembled.
- ⚠ Ensure a secure surface during construction, and place the product always on a flat, steady and stable surface.
- ⚠ Please use the product carefully, as the product requires great skill, avoid accidents by the user or others, by fall or collision.
- ⚠ Please wear suitable protective equipment during use, e.g. protective helmet, gloves, knee pads, elbow pads etc.

EN RACING DESIGN AND
QUALITY COMPONENTS WILL BE APPRECIATED BY THOSE WHO LOVE
TO FEEL THE WIND IN THE HAIR.



AGE 8-12 | MAX 75kg/ 165 lbs | MAX 135 cm/ 53"



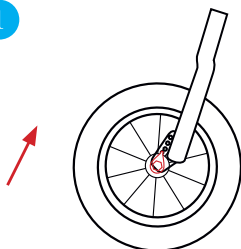
2X12"

“ Our brand of scooters, training bikes and children bikes with original design,
high quality, and bright colours. ”

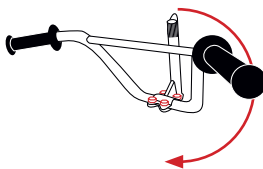


INSTRUCTIONS

1

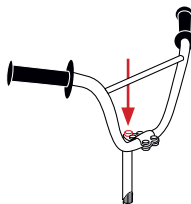


2

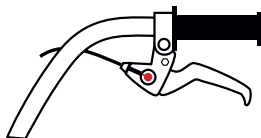


PICTURE GUIDE

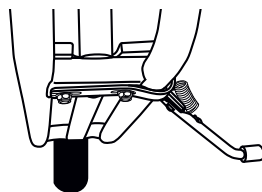
3



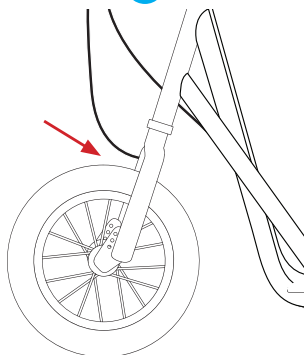
4

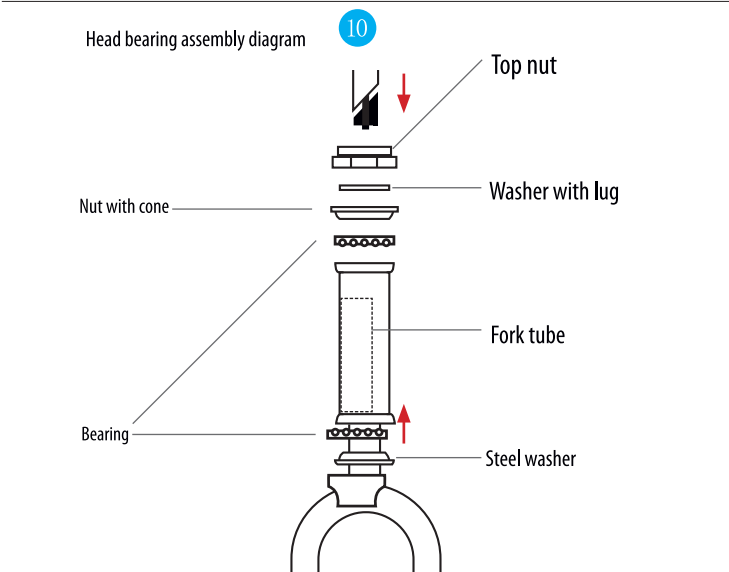
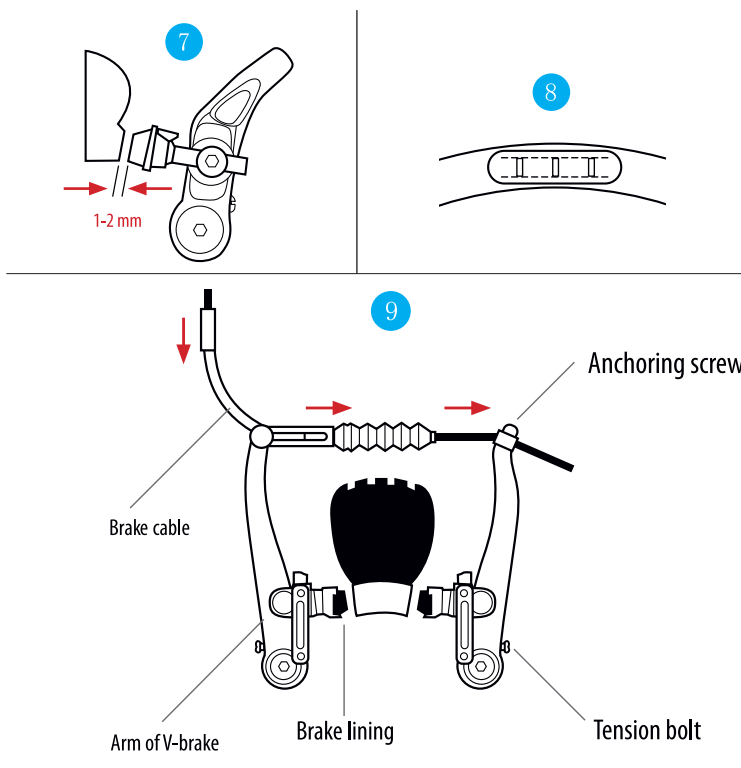


6



5





TECHNICAL SPECIFICATION

Age	8—12
Loading limit	75 kg / 165 lbs.
Weight	7.8 kg / 17 lbs.
Frame	Carbon steel
Tyres	12"
Rims	steel
Deck	32.5 cm / 12.8"
Brakes	2 X "V" brake
Width of handle bars	57 cm / 22.5"
Height of handle bars	83 cm (32.7") / 88 cm (34.6")
Length	120 cm / 47.2"
Fulfills norm	US: ASTM 2264, CPSC HR 4040 GB: EN14619, EN71-3

Dear customer,

We would like to pass onto you our thanks for choosing this product. It is our duty to inform you that this scooter in its basic version is intended **for mild terrain and non-car traffic roads**. It is possible that you will need to add more safety features, such as reflectors, required under the law of the country in which the scooter will be used. Also it is vital to use safety features for the rider him/herself (see safety features section).

A very important aspect for the safe use of this product is the proper adjustment of the scooter (wheel bearings, break inspection, bolt tightening, and proper tire inflation). That is why we highly recommend having the scooter assembled and regularly inspected by a professional bicycle service, simply for the well informed skilled technicians who can assist you. By securing yourself a properly set-up scooter with regular service you will be able to enjoy this product for a long time to come.

Do not forget that our line of scooters is wide. You can choose from many different sizes and styles for different age groups and uses .

ASSEMBLY INSTRUCTIONS

- Control individual parts in the box:
(1 piece) main frame of scooter including front fork,
(2 pieces) brake system (depending on the type of scooter)
(2 pieces) inflatable wheels (according to the model: 2× 12")
(1 piece) handlebars including the handlebars rod.
Entrust a professional bicycle service with the assembly.
- Loosen the nuts on the two small wheel shafts. If necessary, tighten the bearing clearance so that the wheels can rotate freely (that is, they will not be tensioned and cannot rotate freely at the same time).

3. (picture 1). Make sure that the security eye provided with a small beak is positioned correctly, (protruding part /break/ of security eye must be inserted in a small hole at the end of the fork whereas the axis of the wheel must be exactly in the middle of the fork.
4. For the handlebars: if the handlebar rod is pointing upward ,rotate it downward and evenly tighten the four front piece screws (picture 2)
5. Insert the handlebar rod into the handlebar tube (picture 3). Adjust the height of the handlebars according to the rider's needs. The maximum height is marked on the handlebar rod. Check that the axis of the handlebars is parallel to the axis of the front wheel, and properly tighten the screw (picture 4).
6. V-type brakes: they have been assembled, and it is usually effective that the right lever brakes the rear wheel, and the left lever brakes the front wheel. If the wheel cannot rotate freely and "loosen" on one side, it can be adjusted by tightening the tension bolt on the V-brake arm to make it loose (Picture 10). Loosen the tightening screw on the V brake arm farther from the rim to allow the wheel to rotate freely. Make sure that the control brakes are working well before riding.
7. In case the kickstand has not yet been attached, screw it to the lower part of the frame so that it folds out to the left side in relation to the riders perspective .



SAFETY WARNING! Danger of wheel failure due to rim wear - Replace wheel when any part of the Rim Wear Groove is not visible

OPERATING INSTRUCTIONS FOR RIDING

- a) During the start-up and during the whole time of riding, the rider has to have both hands on the handlebars grips and minimally one foot on the deck of the scooter.
- b) Start to ride so that you put one foot on the deck (both hands on the grips – see point a) and with a second foot take off in the direction of the ride.
- c) **V-shaped braking procedure:** Press the brake levers (1-2 pieces) on the handlebar, and you will get the necessary braking. During this period, the braking intensity depends on the pressure of the lever. When braking, it is best to use more rear brakes. Use the front brake (if it is included) as a slack upper brake (a brake for ending braking or as an emergency brake)- during a more intensive braking, accidents and injuries may occur.

- d) When turning, you need to tilt the handlebar slightly to the same side you want to ride (according to the speed and diameter of the turn).

MAINTENANCE

We recommend to entrust a professional service with it. Control regularly, eventually tighten or adjust: screw connections, tightening mechanisms, lubricate sliding parts (wheels bearings, handlebars bearings, cables, brake parts etc.), when dirty, clean with a humid cloth.

ATTENTION: During the lubrication, the lubricant must not get onto the braking friction surface of the rim and the brake lining, if this situation occurs, it is necessary to remove the grease from all brake parts, eventually to clean with a technical gasoline. If during the riding it starts to "crack" in the spokes, it is necessary to tighten all the wires of the wheels equally by 2 turns (we recommend to entrust with it a professional service), eventually to grease, adjust or change the bearings and bearings parts. If the change of wheels is necessary, use always wheels/tyres of the same parameters according to the original ones. Carry out the disassembly in a contrary way than the assembly (see Operating instructions). Entrust the exchange or repair of a tyre and inner tube to a professional service. If the scooter's construction contains self-locking nuts or other self-locking accessories, when unloosing and tightening them frequently, they lose their efficiency. In this case it is necessary to substitute respective parts.

SECURITY MEASURE

Before the assembly, study the operating instructions carefully. The maximum weight capacity of the scooter is stated in the parameters. To drive securely, use always headpiece, knee protectors, elbow protectors, wrist protectors and solid shoes. This scooter in its basic version is not intended for roads with car traffic or for riding in the dark. Control the screw connections, tightening mechanisms and brake/s regularly to avoid an eventual accident when riding. We do not recommend to carry out adaptations of this scooter to other models. Do not brake too rapidly and suddenly – you could fall down. The manufacturer does not guarantee the damnification or damage that may arise when using this product.

The scooter is designed only for 1 rider – co-riders are forbidden!

⚠ WARNING: Mechanisms for decreasing the speed (brake lining, rims, tyres, eventually rear "V" brake) are becoming warm during the use and it is, therefore, not convenient to touch them after the braking.

WHILE RIDING SCOOTER USE AVAILABLE PROTECTIVE EQUIPMENT (HELMET, PROTECTIVE GLOVES ETC.).

GUARANTEE LIMITATION

The guarantee does not apply to a damage or loss of a respective part caused by a fall, abrasion, incorrect assembly, non-adequate adaptation, jumping, acrobatic riding, headless riding, competition riding, rough treatment, neglecting usual maintenance or using scooter that is completed by any motor appliance.

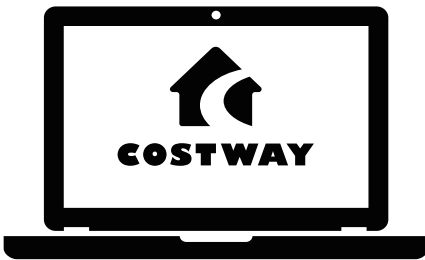
The manufacturer reserves the right for changes of the operating instructions in the course of the products development.

Welcome to visit our website and purchase our quality products!

With your inspiring rating, COSTWAY will be more consistent to offer you
EASY SHOPPING EXPERIENCE, GOOD PRODUCTS and EFFICIENT SERVICE!

US office: Fontana, California

UK office: Ipswich



- * Reward Points
- * Exclusive Customer Service
- * Personalized Recommendations
- * Permanent Shopping Cart
- * Order History

5 Star Rating



We would like to extend our heartfelt thanks to
all of our customers for taking time to assemble
this product and giving us valuable feedbacks.

THANK
YOU
😊

