



Child Requirements

Max weight is: 49 lbs.

Age is: 10 Months to 5 Years

! WARNING!

Read and follow all instructions before using the 4-in-1 Push and Ride Stroller Tricycle.

USER'S MANUAL

**4-in-1 Push and Ride Stroller Tricycle
TY326400**

Warnings

WARNING!

Read and follow all instructions before using the 4-in-1 Push and Ride Stroller Tricycle.

Please save the owner's manual for future use.

- **ALWAYS** ensure that all components are correctly fitted and adjusted before use. To avoid the danger of suffocation, remove all plastic covers before using the 4-in-1 Push and Ride Stroller Tricycle. Immediately destroy the plastic cover to keep it away from babies and children.
- **NEVER leave child unattended. ALWAYS** keep child in view while in 4-in-1 Push and Ride Stroller Tricycle.
- **Prevent serious injury from falls or sliding out. ALWAYS** secure child in the restraint with the 3-Point Safety Harness for children up to 24 months.
- **NEVER** allow child to ride near stairs, steps, or escalators.
- **DO NOT** carry child in 4-in-1 Push and Ride Stroller Tricycle up or down stairs.
- When making adjustments to the 4-in-1 Push and Ride Tricycle, **ALWAYS** ensure that all parts of the child's body are clear of any moving parts.
- **DO NOT** use the Storage Basket to transport child.
- **DO NOT** overload the Storage Basket, Maximum weight should not exceed 5 lbs.
- **ALWAYS** engage the Rear Parking Brake(s) when placing and removing child from the 4-in-1 Push and Ride Stroller Tricycle.
- **DO NOT** place any heavy bags, packages, or other items on the 4-in-1 Push and Ride Stroller Tricycle Parent Handle, Canopy, Seat Base Backrest, or Handrail as they can tip the 4-in-1 Push and Ride Stroller Tricycle over and injure the child.
- **DO NOT** use if any part is broken, torn, or missing.

Warnings

WARNING!

- **ALWAYS** wear shoes when using the 4-in-1 Push and Ride Stroller Tricycle
- **DO NOT** use with more than one child at a time.
- **DO NOT** leave other children playing unattend near the 4-in-1 Push and Ride Stroller Tricycle.
- **DO NOT** allow child to climb on or stand on.
- To avoid the risk of fire, **NEVER** leave the 4-in-1 Push and Ride Stroller Tricycle near sources of strong heat such as open fires, electric heaters, and gas stoves. If the 4-in-1 Push and Ride Stroller Tricycle is exposed to direct sunlight, wait for it to cool down before placing your child in it.
- This 4-in-1 Push and Ride Stroller Tricycle is recommended for children up to 5 years old, or for children who weight less than 49 pounds.
- **DO NOT** use accessories, spare parts, and components other than those supplied by infans .
- Ensure the person using the 4-in-1 Push and Ride Stroller Tricycle is responisble and knows how to use it safely.
- **Always** apply the brakes when the 4-in-1 Push and Ride Stroller Tricycle is stationary.
- **NEVER** leave the 4-in-1 Push and Ride Stroller Tricycle on a sloped surface with a child on board, even with the brakes engaged.
- **DO NOT** use the stroller on a beach as the sand and salt could damage the 4-in-1 Push and Ride Stroller Tricycle.
- **DO NOT** use any infant car seat with this product. Serious injury could occur.
- **DO NOT** run, jog, or in-inline skate or participate in other athletic activity while using the 4-in-1 Push and Ride Stroller Tricycle.

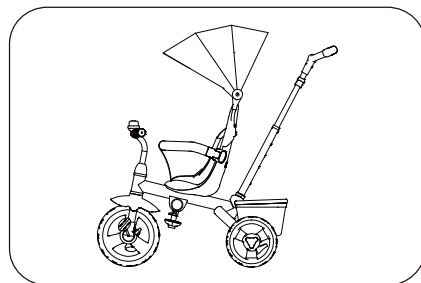
Unpacking & 4 Stages

Unpack all contents of the 4-in-1 Push and Ride Stroller Tricycle and check that all parts are present before assembling. See **PARTS LIST** on Page 4 for full list of all items needed to assemble the 4-in-1 Push and Ride Stroller Tricycle.

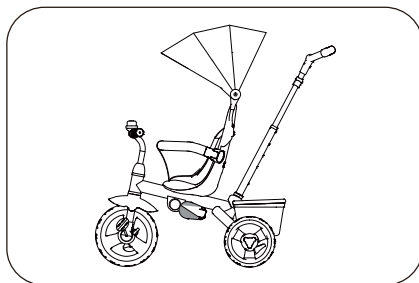
After checking all parts are present discard the packaging materials.

WARNING: Please make sure children are at a safe distance while you are assembling the 4-in-1 Push and Ride Stroller Tricycle.

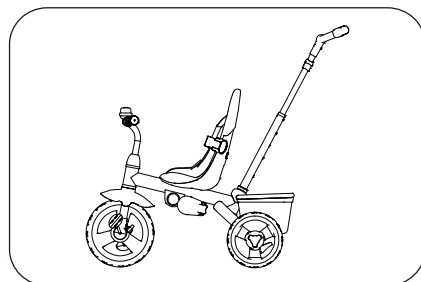
4 Stages



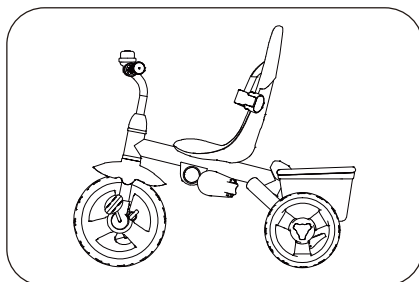
Stage 1 - Stroller
(10 months+)
Foot Pegs down



Stage 2 - Push Trike
(18 months+)
Foot Pegs up

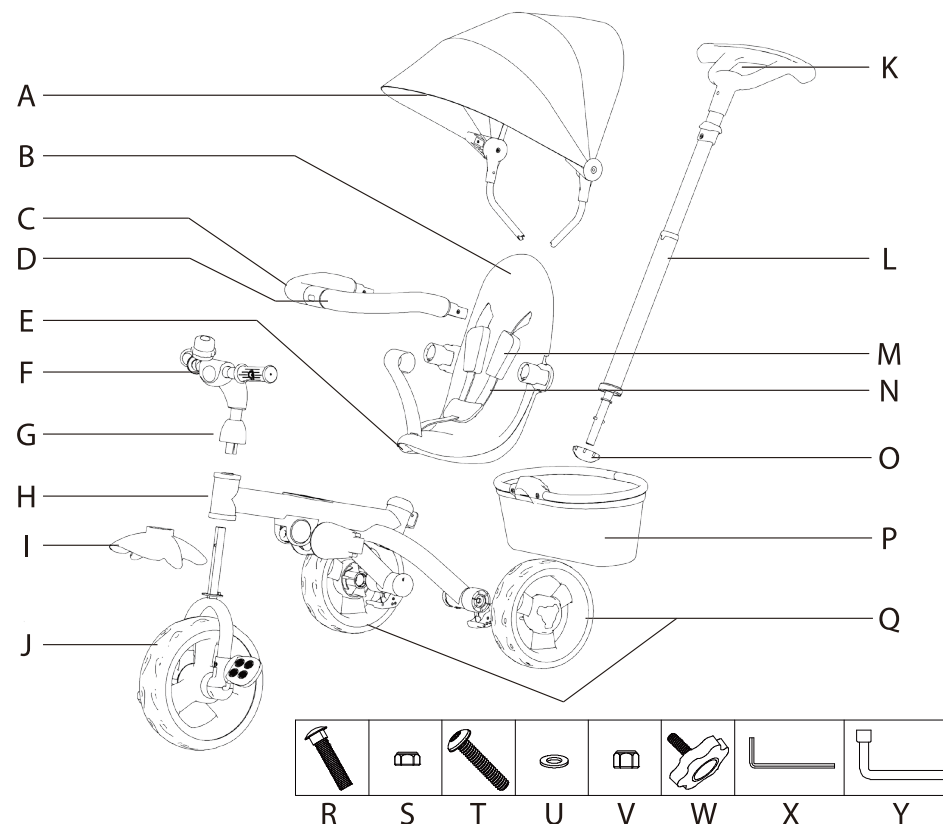


Stage 3 - Training Trike
(24 months+)
Pedals locked



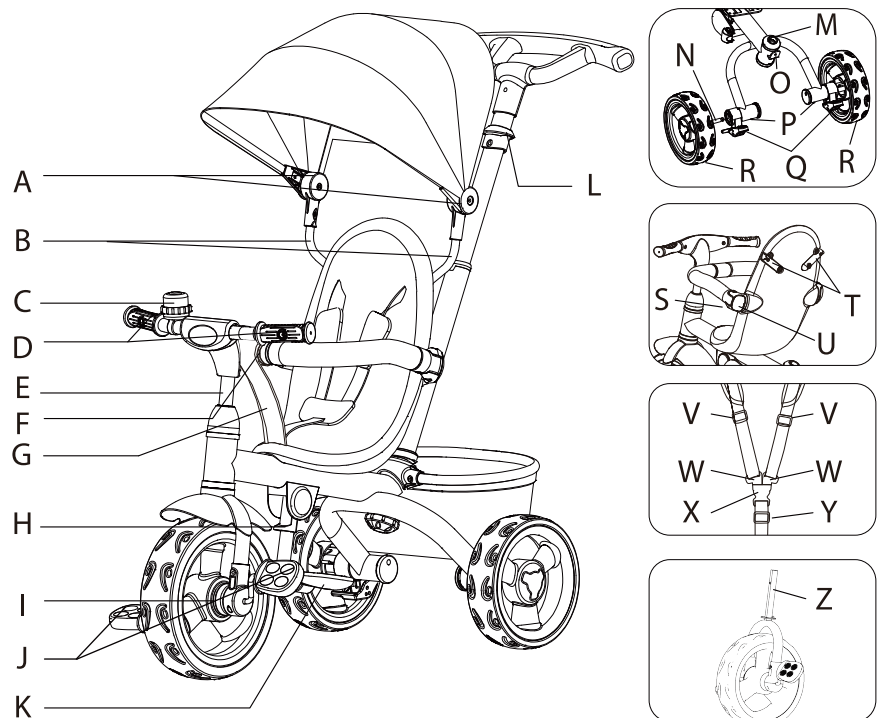
Stage 4 - Independent Trike
(3 - 5 years) (49 lbs.)
Parent Handle removed

4-in1 Push and Ride Stroller Tricycle Parts List



- | | |
|--------------------------|-----------------------------|
| A. Canopy | M. Harness Pads (x2) |
| B. Trim Cover | N. 3-Point Safety Harness |
| C. Handrail (Right) | O. Parent Handle Cap Screw |
| D. Handrail (Left) | P. Storage Basket |
| E. Plastic Seat Base | Q. Rear Wheel (x2) |
| F. Tricycle Handle | R. M6X28 Bolt (x1) |
| G. Handle Frame Cover | S. M6 Lock Nut (x1) |
| H. Frame | T. M6X30 Bolt (x2) |
| I. Front Wheel Fender | U. M6 Washer (x2) |
| J. Front Wheel | V. M6 Lock Nut (x2) |
| K. Parent Handle (Upper) | W. Storage Basket Cap Screw |
| L. Parent Handle (Lower) | X. Allen Key |
| | Y. Assembly Wrench |

4-in-1 Push and Ride Stroller Tricycle Features



- | | |
|--------------------------|---|
| A. Canopy Axis | L. Parent Handle Height Adjuster |
| B. Canopy Post(s) | M. Parent Handle Frame Opening |
| C. Bell | N. Rear Wheel Rod(s) |
| D. Soft Grip Handle(s) | O. Storage Basket Cap Screw Opening |
| E. Handle Rod | P. Rear Wheel Release(s) |
| F. Handrail Release | Q. Rear Brake(s) (Left and Right) |
| G. Trim Cover Front Flap | R. Rear Wheel(s) |
| H. Foot Peg Adjuster | S. Handrail (Left and Right) Release(s) |
| I. Front Wheel Lock | T. Canopy Post Anchor(s) |
| J. Anti Skid Pedal(s) | U. Handrail Attachment Opening(s) |
| K. Foot Pegs | V. Upper 3-Point Harness Adjuster |
| | W. Buckle Tongues (Left and Right) |
| | X. Buckle |
| | Y. Lower 3-Point Harness Adjuster |
| | Z. Front Wheel Rod |

Rear Wheel(s) & Front Wheel Assembly

Rear Wheel(s)

1. Insert the Rear Wheel Rod into the Frame Opening with wheel on outer side until you hear a "click" **A**. To remove the Rear Wheel depress the Rear Wheel Release **B** and pull out (See Fig. 1).

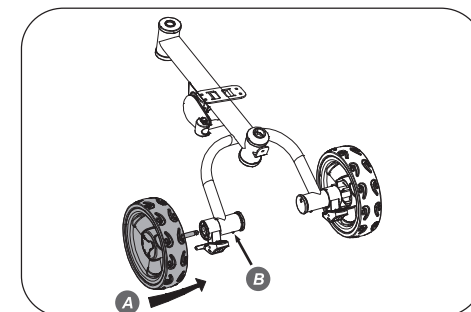


Fig. 1

Front Wheel

2. Insert the Front Wheel Rod into the Front Wheel Fender **C** aligning the groove, then push into the Frame Opening **D** (See Fig. 2).
3. Insert the Tricycle Handle Rod through Handle Frame Cover **E** then align slots with the Front Wheel Rod. Push Tricycle Handle Rod down over Front Wheel Rod **F**. Align the holes and insert the M6x28 Bolt into the hole and affix one M6 Lock Nut **G** to the end of the M6x28 Bolt. (*The M6 Lock Nut should be on the front side of the Frame.*)
4. Use the Assembly Wrench provided to tighten the M6 Lock Nut. **DO NOT** over-tighten (See Fig. 3).

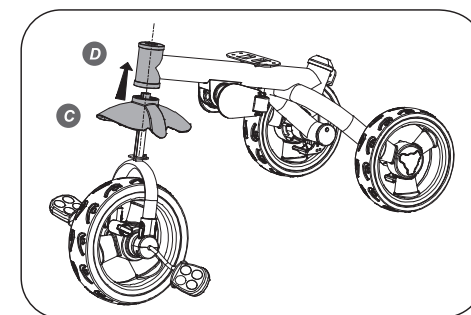


Fig. 2

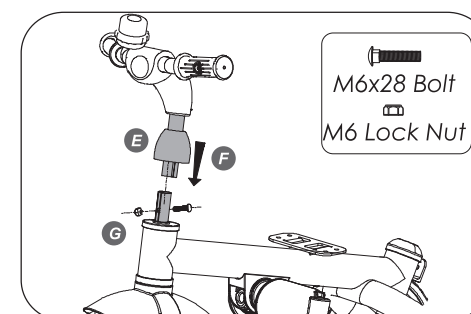


Fig. 3

Plastic Seat Base & Handrail Assembly

Plastic Seat Base

5. The Frame has 2 forward facing positions. Select the front **A** or back position **B** that best allows the child to reach the Anti Skid Pedals (See Fig. 4).
6. Insert one M6x30 Bolt down through one Plastic Seat Base opening **C** into either the front or back Frame position **D** (See Fig. 4). Then place one M6 Washer on the end of the M6x30 Bolt, followed by one M6 Lock Nut **E** (See Fig. 5). Hand-tighten the M6 Lock Nut. Repeat process with second M6x30 Bolt inserting through the second Plastic Seat Base opening.
7. Use the Assembly Wrench provided to tighten the M6 Lock Nuts. **DO NOT** over-tighten.

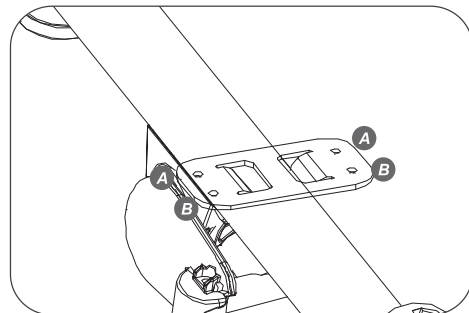


Fig. 4

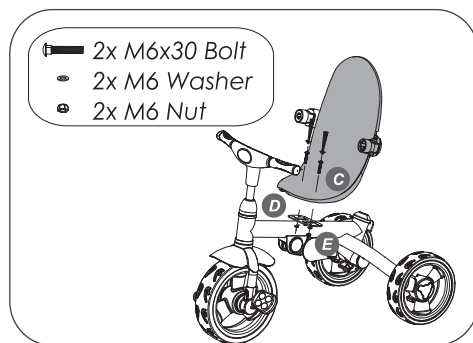


Fig. 5

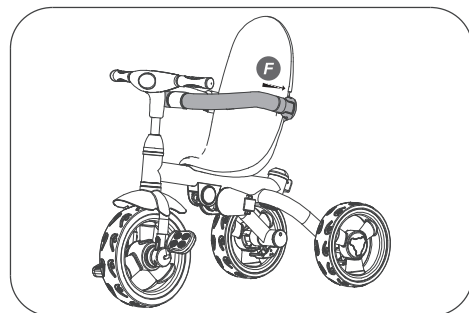


Fig. 6

Handrail

8. Insert the Handrail (Left) into the left Handrail Attachment Opening **F** on the Plastic Seat Base until you hear a "Click". Then repeat process with Handrail (Right) (See Fig. 6).

Storage Basket & Parent Handle Assembly

Storage Basket

9. Align the Storage Basket with the Parent Handle Frame Opening **A** on the back of the Frame and push down (See Fig. 7).
10. Insert the Storage Basket Cap Screw **B** into the Storage Basket Cap Screw Opening and hand-tighten (See Fig. 7).

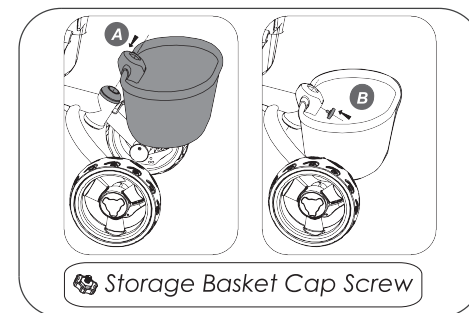


Fig. 7

Parent Handle

11. Align the Parent Handle Upper **C** with the Parent Handle Lower and push in until "Click" (See Fig. 8).



Fig. 8

Parent Handle Assembly & Height Adjustment

Parent Handle

12. Insert the Parent Handle into the Parent Handle Frame Opening on the back, align the two tabs **A** to push the Parent Handle until it bottoms out **B** (See Fig. 9).

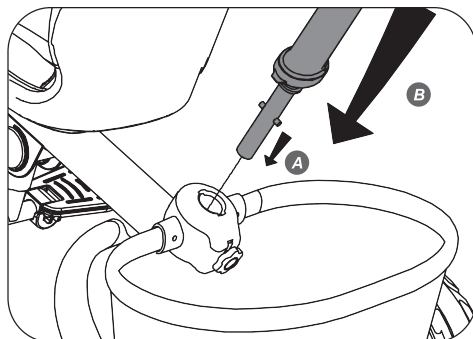


Fig. 9

After the Parent Handle is in the Parent Handle Frame Opening, then thread the Parent Handle Cap Screw **C** (See Fig. 10).

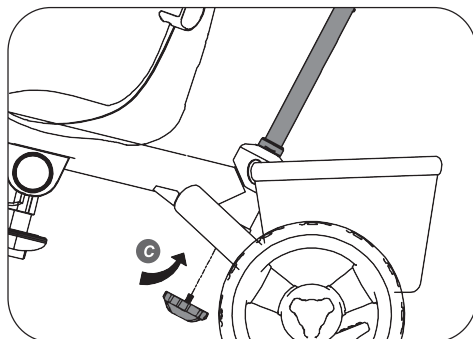


Fig. 10

Parent Handle Adjustment

13. The Parent Handle can be adjusted to 1 of 4 height positions **D**. To adjust, pull up the Parent Handle Height Release **E** which will unlock the Parent Handle allowing it to be adjusted into the desired position. (See Fig. 11).

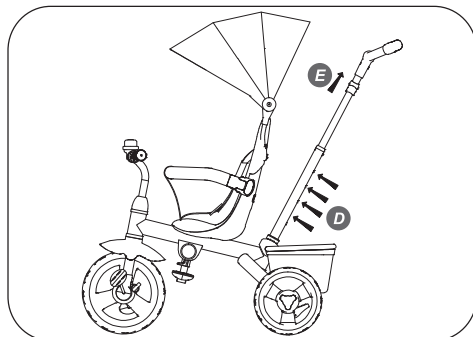


Fig. 11

Trim Cover & Harness Pad Assembly

Trim Cover

14. Insert the upper straps of the 3-Point Safety Harness through the upper openings of the Trim Cover **A**. Then hook the top of the Trim Cover over the top of the Plastic Seat Base **B** (See Fig. 12).

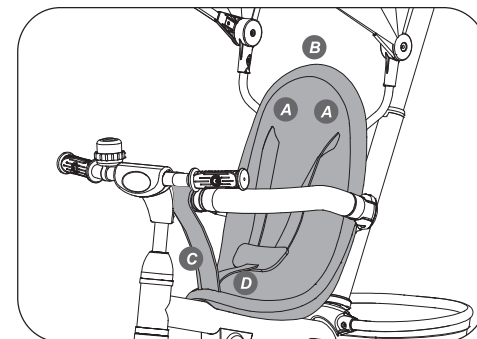


Fig. 12

15. The Trim Cover Front Flap **C** connects to the Handrail. The Trim Cover Front Flap has two buttons that can be unsnapped to wrap around the Handrail and then resnapped once attached (See Fig. 12).

16. Insert the lower strap **D** of the 3-Point Harness through the lower opening of the Trim Cover (See Fig. 12).

Harness Pads

17. Attach one Harness Pad **E** to each of the upper straps of the 3-Point Safety Harness (See Fig. 13).

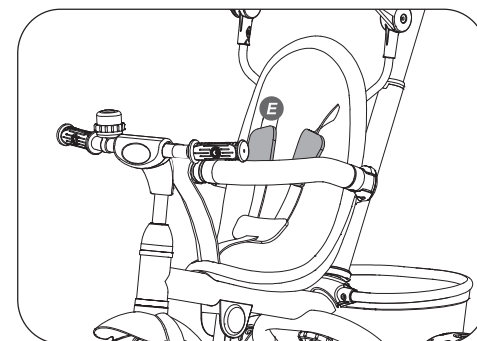


Fig. 13

Canopy Assembly & Foot Peg Adjustment

Canopy

18. Insert the Canopy Posts **A** through the openings on the back side of the Trim Cover. Push the Canopy Posts into the Canopy Post Anchors **B** until hearing a “click” (See Fig. 14).

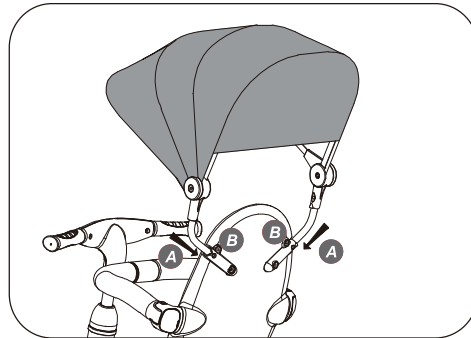


Fig. 14

19. The Canopy can be opened holding the front of the canopy and pulling forward **C** (See Fig. 15).

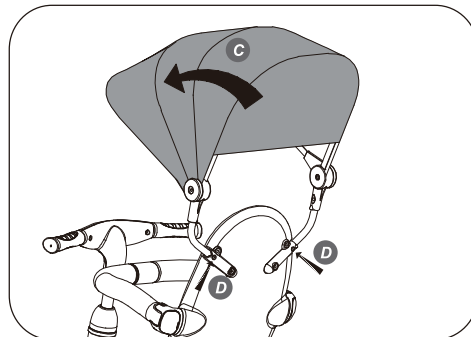


Fig. 15

20. To remove the Canopy, push the buttons **D** inward on the Canopy Posts and pull outward from the Canopy Post Anchors (See Fig. 15).

DO NOT remove the Canopy at the Canopy Axis.

Raise or Lower the Foot Pegs

21. To raise or lower the Foot Pegs, pull Foot Peg Adjuster **E** away from the Frame and then rotate up or down (See Figure 17).

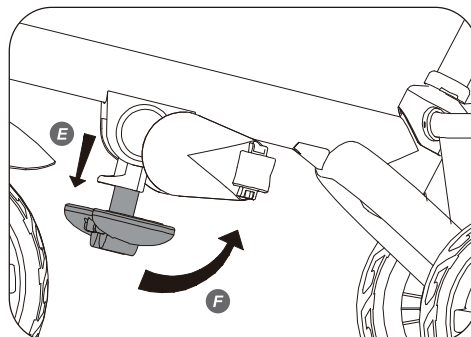


Fig. 17

22. The Foot Pegs can then be folded inward or outward as required **F** (See Figure 17).

Front Wheel UnLock & Lock

Front Wheel Unlock

23. For children 10 to 24 months, unlock the Front Wheel Lock so the pedals free spool. On the left side of the Front Wheel is the Front Wheel Lock, rotate clockwise **A** the wheel is unlocked and the pedals will free spool (See Fig. 18).

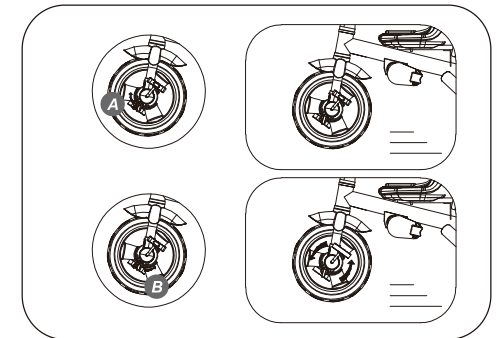


Fig. 18

Front Wheel Lock

24. For Children 24 months up lock the Front Wheel Lock so the child can pedal the tricycle. On the left side of the Front Wheel is the Front Wheel Lock, rotate counter clockwise **B** the wheel is locked and the pedals will drive the 4-in-1 Push and Ride Stroller Tricycle (See Fig. 18).

Handrail Removal & Rear Brakes (Left and Right)

Handrail Removal

25. To remove the Handrail, Left depress the Handrail Release **A** and pull off. Repeat depressing the Handrail Release on the right side and pull the Handrail Right off. (See Fig. 19).

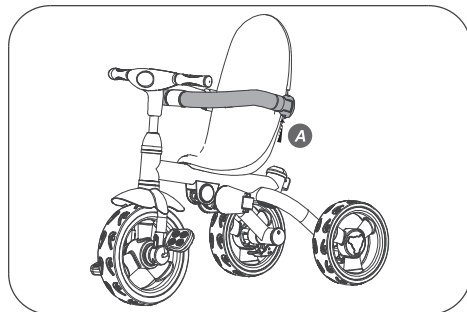


Fig. 19

Rear Brakes (Left and Right)

26. The Rear Brakes (Left and Right) are independent of each other.

27. To Set the Rear Brakes (Left and Right) push one Rear Brake **B** down with with foot until it “clicks”. If Rear Brake does not “click” then roll back and forth slightly to allow the Rear Brake to engage into the wheel. Then repeat with other Rear Brake (See Fig. 20). Both Rear Brakes should be engaged.

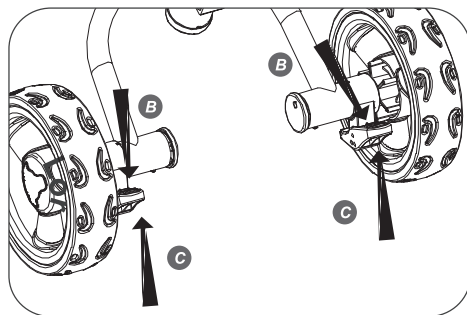


Fig. 20

To release Rear Brakes (Left and Right) pull up one Rear Brake **C** with foot until it “clicks”. Then repeat with other Rear Brake (See Figure 20).

Securing Child with 3-Point Safety Harness

To prevent serious injury from falls or sliding out. **ALWAYS** secure child in the restraint with the 3-Point Safety Harness for children up to 24 months.

Buckle 3-Point Safety Harness

28. Place the Harness Pads **A** around the child's shoulders. Interlock the Buckle Tongues **B**, then push them into the Buckle **C** until it “clicks” (See Figure 21).

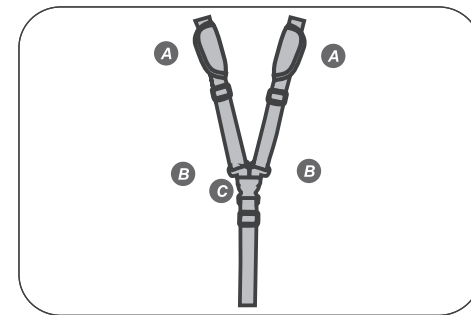


Fig. 21

Adjust 3-Point Safety Harness

29. After Buckle is connected, the 3-Point Harness can be adjusted with the Lower Adjuster **D** and/or the Upper Adjusters **E** for a snug fit (See Fig. 22).

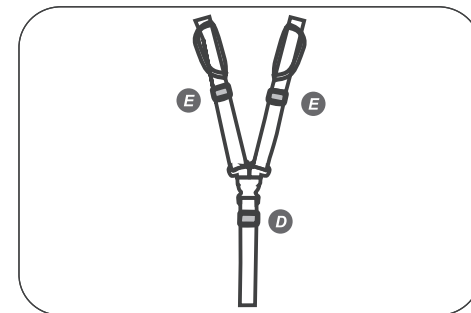


Fig. 22

Release 3-Point Safety Harness

29. To release, apply pressure to both sides of the Buckle depressing the Buckle Tongues **F** until Buckle can be pulled downward away releasing both Buckle Tongues (See Fig. 23).

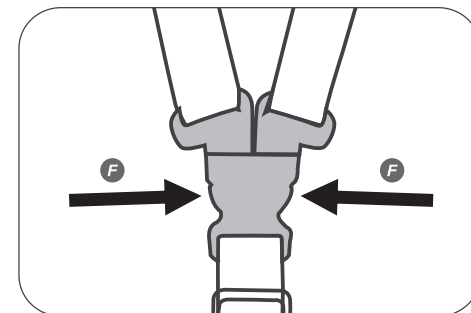


Fig. 23



TIPS:

Your suggestions and comments for Infans are really important to us!

We sincerely solicit you to go back to our shop and leave a good rating in just a simple click. It would be quite encouraging if you could kindly do so like below:

★★★★★ Great products so far

February 24, 2018

Great product so far. Fast delivery, easy setup, and working without any issues.

With your inspiring rating, Infans will be more consistent to offer you

EASY SHOPPING EXPERIENCE, GOOD PRODUCTS and EFFICIENT SERVICE!

