

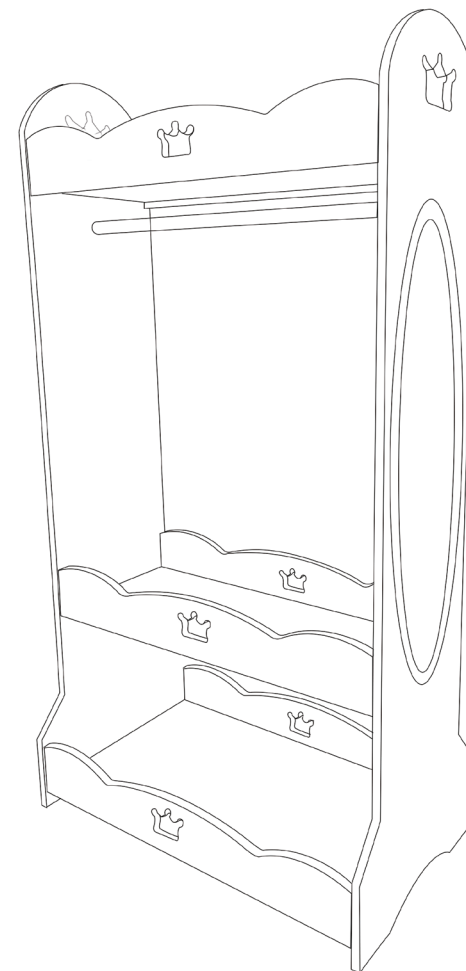


COSTWAY®

**Please give us a chance to make it right and do better !**

Contact our friendly customer service department for help first.  
Replacements for missing or damaged parts will be shipped ASAP !

US office: Fontana    UK office: Ipswich    AU office: Truganina



## Contact Us !

**Do NOT return this item.**

Contact our friendly customer service department for help first.



US:cs.us@costway.com  
UK:cs.uk@costway.com  
AU:cs.au@costway.com

## USER'S MANUAL

### Kids Dress Up Storage with Mirror TP10023

THIS INSTRUCTION BOOKLET CONTAINS **IMPORTANT** SAFETY INFORMATION. PLEASE READ AND KEEP FOR FUTURE REFERENCE.



## Before You Start

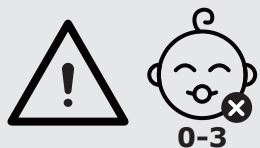
Please read all instructions carefully and keep it for future reference.

### General Security Warning

Caution: The Product is not suitable for the children under 3 years

Danger: Keep all small parts and packaging materials for this product away from babies and children, otherwise they may pose a choking hazard.

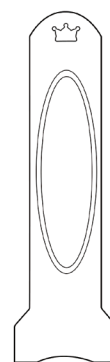
Danger: Lack of attachment may cause a risk of tipping.



**WARNING:**  
**CHOKING HAZARD**-Small parts.  
Not for children under 3 years.

### Warning for Assembly

- ⚠ Assembled only by adults
- ⚠ Remove all Packaging, separate and count all parts and hardware.
- ⚠ Read through each step carefully and follow the proper order.
- ⚠ We recommend that, where possible, all items are assembled near the area in which they will be placed in use, to avoid moving the product unnecessarily once assembled.
- ⚠ Ensure a secure surface during installation, and place the product always on a flat, steady and stable surface.



A x1



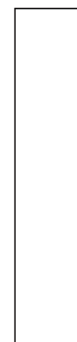
B x1



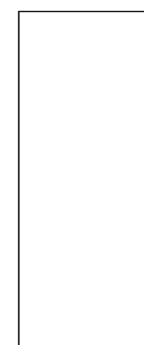
C x6



D x1



E x2



F x1

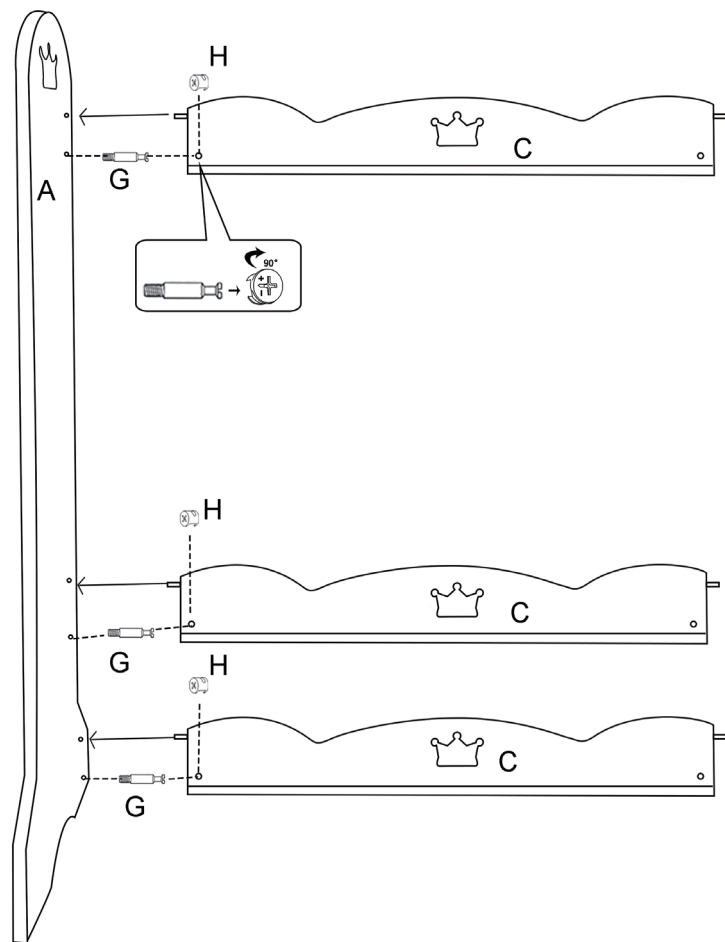


G x12



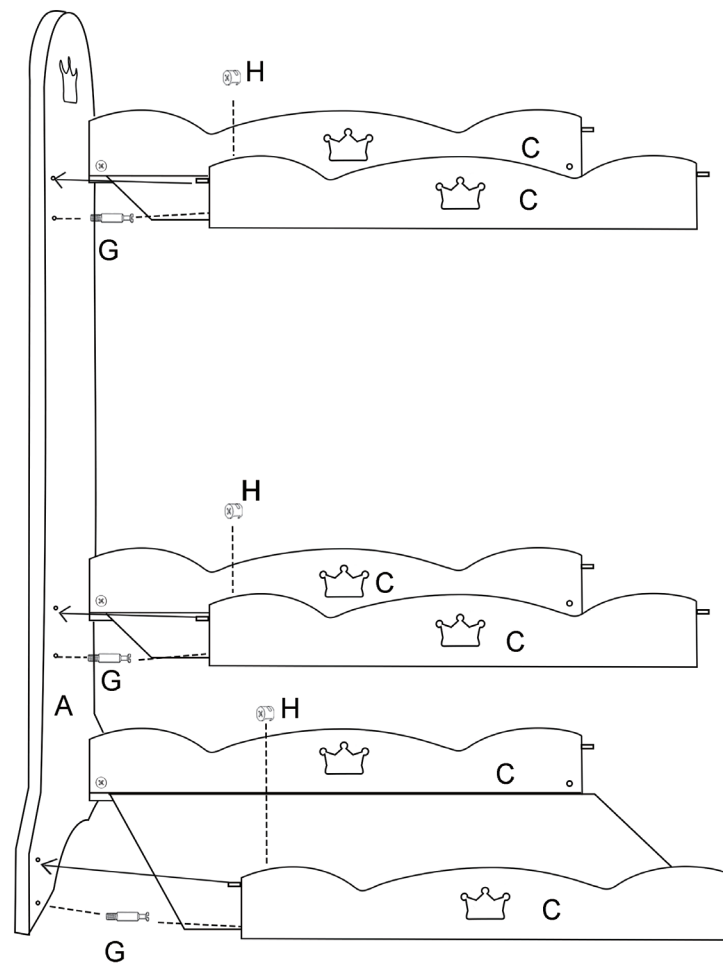
H x12

1



1. Tighten the (A) board with the (G) screw, insert the other end of the (G) screw into the (C) board, and use the (H) accessory to rotate 90°.

2



2. Install the (E) board and (F) board on the (C) board, use (G) screw to tighten the (A) board, insert the other end of the (G) screw into the (C) board, and use the (H) accessory to rotate 90°.

