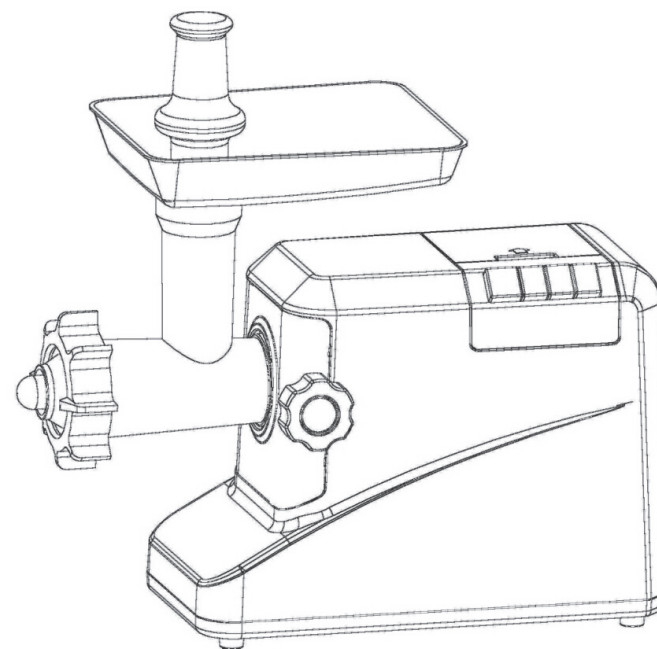




COSTWAY®



USER'S MANUAL

Meat Grinder KC36492

THIS INSTRUCTION BOOKLET CONTAINS **IMPORTANT** SAFETY INFORMATION. PLEASE READ AND KEEP FOR FUTURE REFERENCE.

Please give us a chance to make it right and do better!

Contact our friendly customer service department for help first.

Replacements for missing or damaged parts will be shipped ASAP!

Follow Costway

Visit us: www.costway.com



Contact Us!

Do NOT return this item.

Contact our friendly customer service department for help first.



Before You Start

- ⚠ Please read all instructions carefully.
- ⚠ Retain instructions for future reference.
- ⚠ Separate and count all parts and hardware.
- ⚠ Read through each step carefully and follow the proper order.
- ⚠ We recommend that, where possible, all items are assembled near to the area in which they will be placed in use, to avoid moving the product unnecessarily once assembled.
- ⚠ Always place the product on a flat, steady and stable surface.
- ⚠ Keep all small parts and packaging materials for this product away from babies and children as they potentially pose a serious choking hazard.

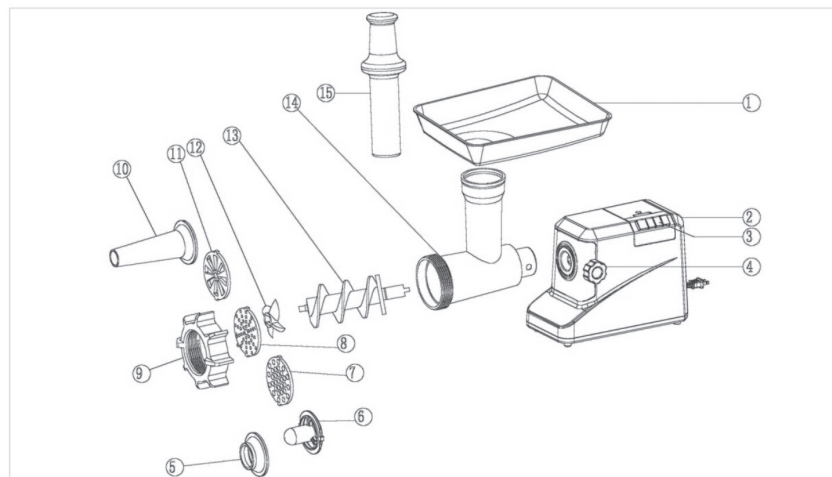
IMPORTANT SAFEGUARDS

When using electrical appliances, basic safety precautions should always be followed including the following:

1. Read all instructions.
2. To protect against risk of electrical shock do not put Motor in water or other liquid.
3. Close supervision is necessary when any appliance is used by or near children.
4. Unplug from outlet when not in use, before putting on or taking off parts, and before cleaning.
5. Avoid contacting moving parts.
6. Do not operate any appliance with a damaged cord or plug or after the appliance malfunctions, or is dropped or damaged in any manner. Return appliance to the nearest authorized service facility for examination, repair or electrical or mechanical adjustment.
7. The use of attachments not recommended or sold by the manufacturer may cause fire, electric shock or injury.
8. Do not use outdoors.
9. Do not let cord hang over edge of table or counter.
10. Never feed food by hand. Always use food pusher.
11. Do not use fingers to scrape food away from discharge disc while appliance is operating. Cut type injury may result.
12. Any other servicing should be performed by an authorized service representative.
13. This appliance has a polarized plug (one blade is wider than the other). To reduce the risk of electric shock, this plug will fit in a polarized outlet only one way. If the plug does not fit fully in the outlet, reverse the plug. If it still does not fit, contact a qualified electrician. Do not modify the plug in any way.
14. Do not put parts into the dishwasher or hot water to clean.

SAVE THESE INSTRUCTIONS

DESCRIPTION



- | | |
|---------------------------|--------------------------------|
| 1. Hopper plate | 9. Fixing ring |
| 2. Body | 10. Sausage attachment (large) |
| 3. Keyboard switch | 11. Cutting plate (large) |
| 4. Fasten knob | 12. Cutting blade |
| 5/6. Kibbe | 13. Snake |
| 7. Cutting plate (medium) | 14. Head |
| 8. Cutting plate (fine) | 15. Food push |

IMPORTANT SAFEGUARDS

- ◆ It is for household use ,also can be for commercial use.
- ◆ Unplug when assembling and disassembling the unit.
- ◆ Close supervision is necessary when any appliance is used near children.
- ◆ When carrying the unit be sure to hold the body with both hands. Do not carry the unit by the hopper plate or head.
- ◆ Do not fix the cutting blade and cutting plate when using kibbe attachment.
- ◆ Never push products by hand. Use food pusher.
- ◆ Do not grind hard food such as bones, nuts, etc.
- ◆ Do not grind ginger and other materials with hard fiber.
- ◆ Continuous running of meat grinder should be not more than 10 minutes with the following 10minutes interval for motor cooling.
- ◆ Operate the unit from “ON” to “R” or from “R” to “ON” after the previous working condition stops more than 30 seconds, or it may cause some abnormal

case such as moving up and down and easily destroy the unit.

- ◆ To avoid jamming, do not force to operate the unit with excessive pressure.
- ◆ When the circuit breaker activates, do not switch on.
- ◆ Never try to replace the parts and repair the unit by yourself.
- ◆ This appliance is not intended for use by persons(including children) with reduced physical, sensory or mental capabilities, or lack of experience and knowledge, unless they have been given supervision or instruction concerning use of the appliance by a person responsible for their safety.
- ◆ Children should be supervised to ensure that they do not play with the appliance.
- ◆ Do not operate this appliance if the cord or plug is damaged. Return it to the store of service or repair by professional serviceman.
- ◆ Appliance will cut off power when the current is over 1.5 times rated current,after around 3 seconds ,press Circuit breaker&Reset to rest ,then press “ON”,the appliance can continue work.

FOR THE FIRST TIME

- ◆ Check that voltage indicated on the rating label corresponds the mains voltage in your home.
- ◆ Wash all parts (except body) in warm soapy water.
- ◆ Before plug in, ensure the key switch in the “stop” position ,that is the natural state of all keys .

INSTRUCTION FOR USE

ASSEMBLING

- ◆ Press the fasten button, hold the head and insert it into the inlet(when inserting pls pay attention the head must be slanted as per arrow indicated on the top,see fig.1),then move the head anticlockwise so that the head being fastened tightly (fig.2).
- ◆ Place the snake into the head, long end first, and turn to feed the screw slightly until it is set into the motor housing (fig.3)..
- ◆ Place the cutting blade onto the snake shaft with the blade facing the front as illustrated (fig.4).If it is not fitted properly, meat will not be grinded.
- ◆ Place the desired cutting plate next to the cutting blade, fitting protrusions in the slot (fig.5).

- ◆ Support or press the centre of the cutting plate with one finger then screw the fixing ring tight with another hand (fig.6). Do not over tighten..
- ◆ Place the hopper plate on the head and fix it into position.
- ◆ Locate the unit on a firm place.
- ◆ The air passage at the bottom and the side of the motor housing should be kept free and not blocked.

MINCING MEAT

- ◆ Cut all foods into pieces (Sinewless, boneless and fatless meat is recommended, approximate size :20 mm x 20 mm x 60 mm) so that they fit easily into the hopper opening.
- ◆ Mincing meat press "ON" position.
- ◆ Feed foods into the hopper plate. Use for it only the food pusher (fig.7).
- ◆ After using ,Press"STOP&REVERSE"to let appliance to stop ,then pull plug out.

REVERSE FUNCTION

- ◆ If blocked is happened ,direct press"STOP&REVERSE"for 3-6 seconds .
- ◆ After unblocking ,release"STOP&REVERSE",and pull plug out,then clean food out from head of appliance .

MAKING KIBBE

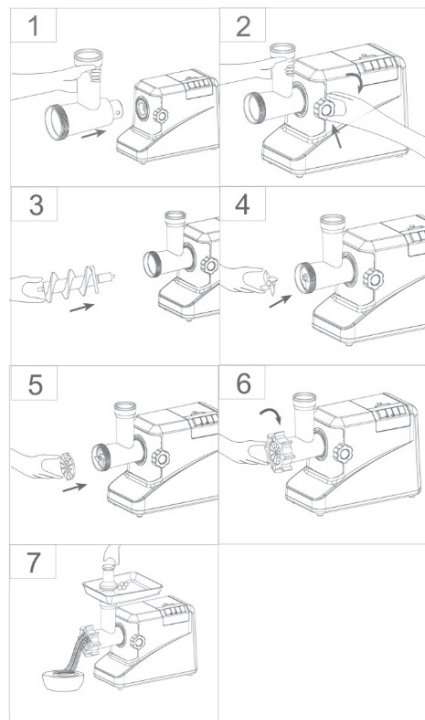
RECIPE **STUFFING**

| | |
|--------------------|------------------|
| Mutton | 100g |
| Olive oil | 1 1/2tablespoons |
| Onion (cut finely) | 1 1/2tablespoons |
| Spices | to your taste |
| Salt | to your taste |
| Flour | 1 1/2tablespoons |

- ◆ Mince mutton once or twice.
- ◆ Fry onion until brown and add minces mutton, all spice, salt and flour.

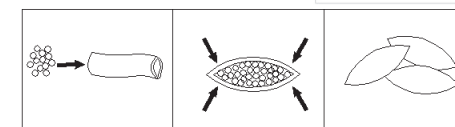
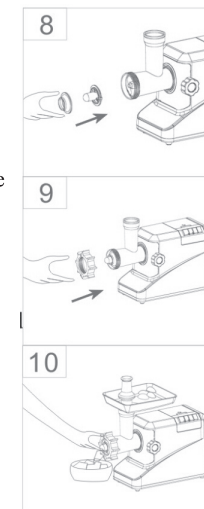
OUTLET COUVER

| | |
|-----------|----------|
| Lean meat | 450g |
| Flour | 150-200g |



| | |
|---------------------|---------------|
| Spices | to your taste |
| Nutmeg (cut finely) | 1 |
| Powdered red pepper | to your taste |
| Pepper | to your taste |

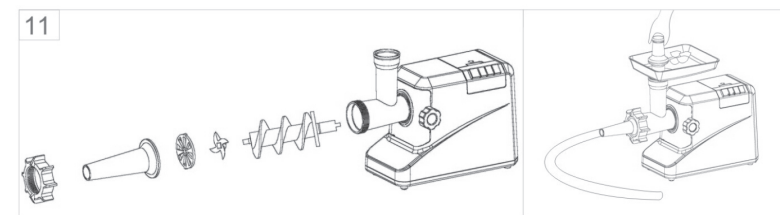
- ◆ Mince meat three times and mix all ingredients together in a bowl. More meat and less flour for outlet cover create better consistency and taste.
- ◆ Grind the mixture three times.
- ◆ Disassemble by reversing the steps from 5-3 to remove the cutting plate and cutting blade.
- ◆ Place kibbe attachments A and B onto the feed screw shaft together, fitting protrusions in the slots (fig.8).
- ◆ Screw cap into place until tight. Do not over tighten (fig.9).
- ◆ Make the cylindrical outlet cover (fig.10).
- ◆ Form kibbe ad illustrated below and deep fry.



MAKING

SAUSAGE

- ◆ Before starting please assemble sausage attachment as per following (fig.11)



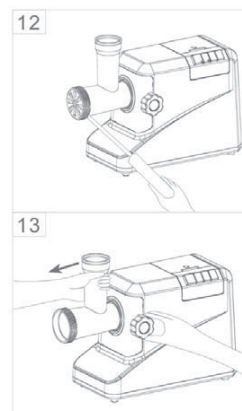
CLEANING AND MAINTENACE

DISADDEMPLING

- ◆ Make sure that the motor has stopped completely.
- ◆ Disconnect the plug from the power outlet.
- ◆ Disassemble by reversing the steps from 1-6 pictures
- ◆ To remove the cutting plate easily, place a screwdriver between the cutting plate and the head as illustrated and lift it up (fig.12).
- ◆ Press the fasten knob, move the head as per direction illustrated on (fig.13),then you can take out the head.

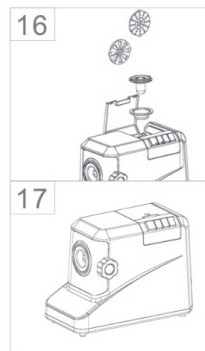
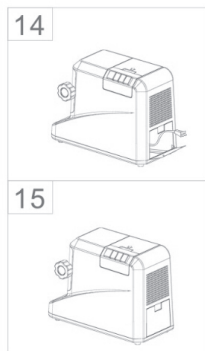
CLEANING

- ◆ Remove meat, etc. Wash each part in warm soapy water.
- ◆ A bleaching solution containing chlorine will discolor aluminum surfaces.
- ◆ Do not immerse the motor housing in water, but only wipe it with a damp cloth.
- ◆ Thinners and petrol will crack or change the color of the unit.
- ◆ Wipe all the cutting parts by vegetable oil -wet cloth.



PACKAGING

- ◆ After cleaning ,put cordset into cordset box which is on back of appliance Body (see Illustration 14)
 - ◆ Then lock the cover of cordset box.(see Illustration 15)
- Put 2 blade trays and 2 kibbes in the storage lid which is on appliance body.(see Illustration 16)
- ◆ Adjust the position of 2 kibbes ,then cover the storage cover ,or it is very different to cover the storage cover .(fig.17)



SPECIFICATION

| | |
|-----------------------------------|-----------|
| KC36492 | |
| Power supply | 110V,60Hz |
| Max. Locked motor approx. wattage | 2000W |

Welcome to visit our website and purchase our quality products!

Your suggestions and comments for COSTWAY are really important to us!
We sincerely solicit you to go back to our shop and leave a good rating in just a simple click. It would be quite encouraging if you could kindly do so like below:

★★★★★ Great products so far

February 24, 2019

Great products so far. Fast delivery, easy setup, and working without any issues.

With your inspiring rating, COSTWAY will be more consistent to offer you EASY SHOPPING EXPERIENCE, GOOD PRODUCTS and EFFICIENT SERVICE!

US office: Fontana, California

UK office: Ipswich



- * Reward Points
- * Exclusive Customer Service
- * Personalized Recommendations
- * Permanent Shopping Cart
- * Order History

5 Star Rating



We would like to extend our heartfelt thanks to all of our customers for taking time to assemble this product and giving us valuable feedbacks.

THANK
you
😊