



USER'S MANUAL
UV-C Fountain Pump
EP24456US

THIS INSTRUCTION BOOKLET CONTAINS **IMPORTANT** SAFETY INFORMATION. PLEASE READ AND KEEP FOR FUTURE REFERENCE.

WARNING

Please read the operating instructions and familiarize yourself with the equipment before placing it in service. Correct and safe use of the system requires strict compliance with the safety instructions. For safety reasons children and young people under 16 years of age, as well as people that cannot recognize potential hazards, or people that are not familiar with these instructions, may not use this device.

CAUTION

CUF is UV-C clarify equipment which can be combined. It contains water pump and one piece of UV-C lamp. Any damage on the equipment or unmerited operation will bring dangerous radiation to the skin and eyes. So if there is any damage of the equipment, it can not be used any more. This equipment is not intend for use by person (including children) with reduced physical, sensory or mental capabilities, or lack of experience and knowledge, unless they have been given supervision or instruction concerning use of the equipment by a person responsible for their safety. The equipment should be placed out of children reach. For the consideration of security, people under 16 years old and those who can not identify danger or grasp the instruction can not use the equipment.

1.This equipment should be placed under the water. Be sure the equipment is submerged completely in the water and the depth should not be greater than 2m.

2.When the water is not enough to submerge the equipment, please never connect power of the equipment to avoid running without water and causing damage .

3. As the UV-C lamp is made of quartz glass, please avoid drop of it or wallop on it.

4. Before all parts are installed completely, the equipment can not be plugged in.

5. If there is any damage on the power cable, UV-C lamp or shell, the equipment can not be used . And it should be discarded as useless.

6. Please make sure that the electrical voltage, frequency used are consistent with the indication on the label of the equipment.

7. When installing the equipment, the installation regulation of pond pumps should be followed.

8. The equipment should be earthed. And the professional person should check the condition of earthed. For the considered of safety, we advise customer to install leakage protector.

9. Pull the connecting cable is forbidden. And please keep the connecting cable away from heat, greasiness or sharpness.

10. When the pump having any unusual noise, please un plug to check the reason.

11. When knowing the frost is coming, please move away UV-C filter to avoid frost crack.

12. The dirtiness on the quartz glass tube will influence the effect of the equipment, please clean the quartz glass tube in time.

13. When the body shell is blocked with the sands and rubbish, it is possible to destroy the quartz glass tube and water pump. So please add the filter sponge to the inlet of the water. And the sponge should be cleaned timely. (once a month).

14. UV-C is harmful to the eyes and skin. Please do not watch UV-C directly or let the skin approach to the UV-C.

15. When installing or repairing this equipment, the electrical source of the equipment must be switched off.

INSTRUCTION

1.This equipment has built-in filter sponge, biochemical basket, UV-C lamp and water pumps. This equipment adopts reasonable water channel, suitable for both indoor, outside pond garden, aquatic breeding, clean water sterilization and water fountains.

2.Through the working of water pump, water flow from the filter cover to filter sponge, and then to the UV-C lamp. Inside of the UV-C lamp the harmful bacteria and algae will be killed. Then the water flow to outside finally.

3. The UV-C lamp was designed as a closed device, no UV-C will scattering. And UV- C light 253.7nm will kill the harmful bacteria and algae to keep a good condition of water.

FEATURES

1.This product contents filtration, biochemical bacteria culture, sterilization, pumping, fountain and other functions all in one, and the structure is reasonable and compact.

2.Large filter surface, reasonable water flow channel, and the effect is remarkable.

3.Built-in independent filter material box for easy replacement and adding different biochemical filter materials. (Apple for specific models, please refer to the product structure for specific models)

4.CUF-2800 series, the middle of the water filter can be stacked (sold separately) to extend the maintenance cycle.

5.Suitable for ponds.

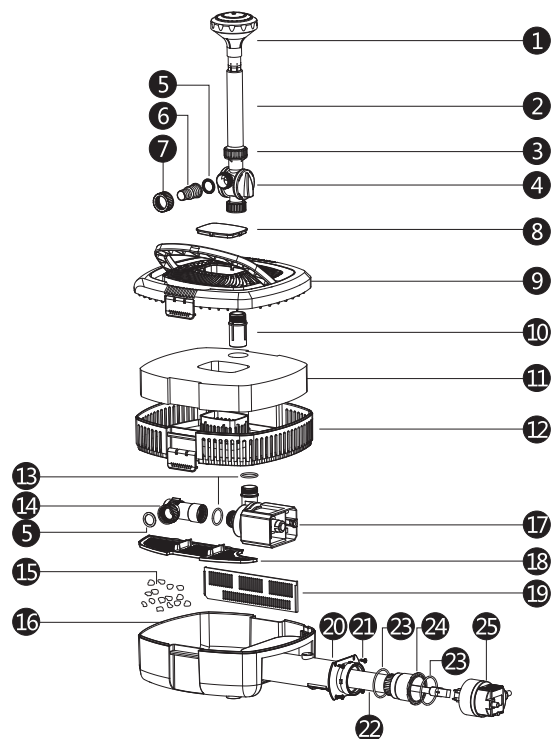
TECHNICAL PARAMETER

Model	Voltage	Power	UV-C Power	H-max	Output	House Adapter	Weight
CUF-2505	220-240V/50Hz 110-120V/60Hz	24W	5W	1.6m	1000L/h	$\frac{1}{2} \sim \frac{3}{4} \sim 1"$	3.7kg
CUF-5005		38W	5W	2.0m	2000L/h	$\frac{1}{2} \sim \frac{3}{4} \sim 1"$	4.0kg
CUF-6005		50W	5W	2.5m	2500L/h	$\frac{1}{2} \sim \frac{3}{4} \sim 1"$	4.2kg
CUF-2500	220-240V/50Hz 110-120V/60Hz	28W	9W	1.6m	1000L/h	$\frac{1}{2} \sim \frac{3}{4} \sim 1"$	4.7kg
CUF-5000		42W	9W	2.0m	2000L/h	$\frac{1}{2} \sim \frac{3}{4} \sim 1"$	5.0kg
CUF-6000		54W	9W	2.5m	2500L/h	$\frac{1}{2} \sim \frac{3}{4} \sim 1"$	5.2kg
CUF-2511	220-240V/50Hz	30W	11W	1.6m	1000L/h	$\frac{1}{2} \sim \frac{3}{4} \sim 1"$	5.4kg
CUF-5011		45W	11W	2.0m	2000L/h	$\frac{1}{2} \sim \frac{3}{4} \sim 1"$	5.7kg
CUF-6011		57W	11W	2.5m	2500L/h	$\frac{1}{2} \sim \frac{3}{4} \sim 1"$	5.9kg
CUF-2511	110-120V/60Hz	32W	13W	1.6m	1000L/h	$\frac{1}{2} \sim \frac{3}{4} \sim 1"$	5.4kg
CUF-5011		47W	13W	2.0m	2000L/h	$\frac{1}{2} \sim \frac{3}{4} \sim 1"$	5.7kg
CUF-6011		59W	13W	2.5m	2500L/h	$\frac{1}{2} \sim \frac{3}{4} \sim 1"$	5.9kg
CUF-2800	220-240V/50Hz	30W	11W	2.0m	3000L/h	$\frac{3}{4} \sim 1"$	6.5kg
CUF-3800		35W	11W	2.8m	3600L/h	$\frac{3}{4} \sim 1"$	6.5kg
CUF-4800		45W	11W	4.0m	4500L/h	$\frac{3}{4} \sim 1"$	6.5kg
CUF-5800		55W	11W	4.8m	5200L/h	$\frac{3}{4} \sim 1"$	6.5kg
CUF-2800	110-120V/60Hz	30W	13W	2.0m	3000L/h	$\frac{3}{4} \sim 1"$	6.5kg
CUF-3800		35W	13W	2.8m	3600L/h	$\frac{3}{4} \sim 1"$	6.5kg

CUF-4800	110-120V/60Hz	45W	13W	4.0m	4500L/h	$\frac{3}{4}" \sim 1"$	6.5kg
CUF-5800		55W	13W	4.8m	5200L/h	$\frac{3}{4}" \sim 1"$	6.5kg

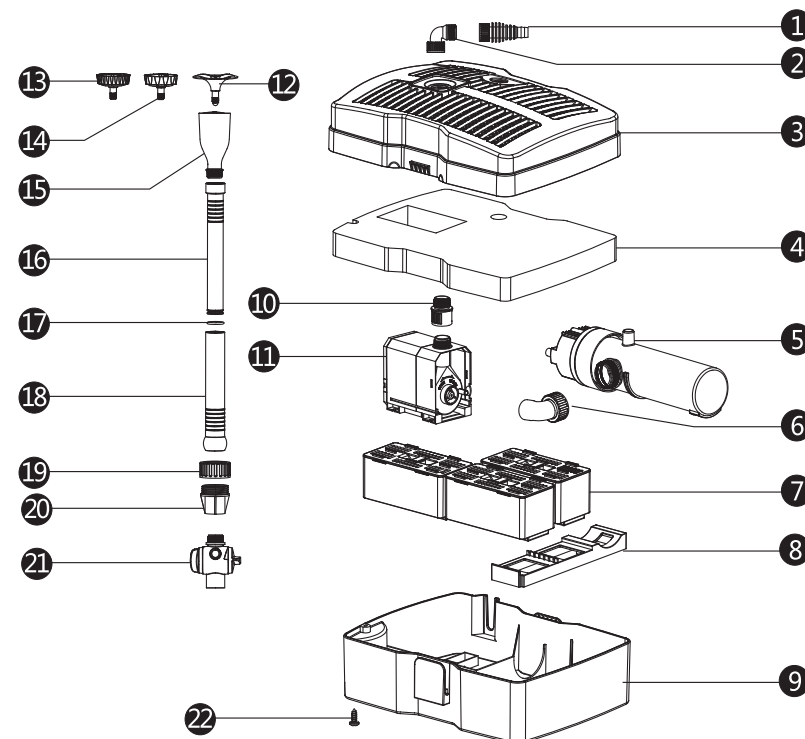
PART LIST

CUF-2800/3800/4800/5800



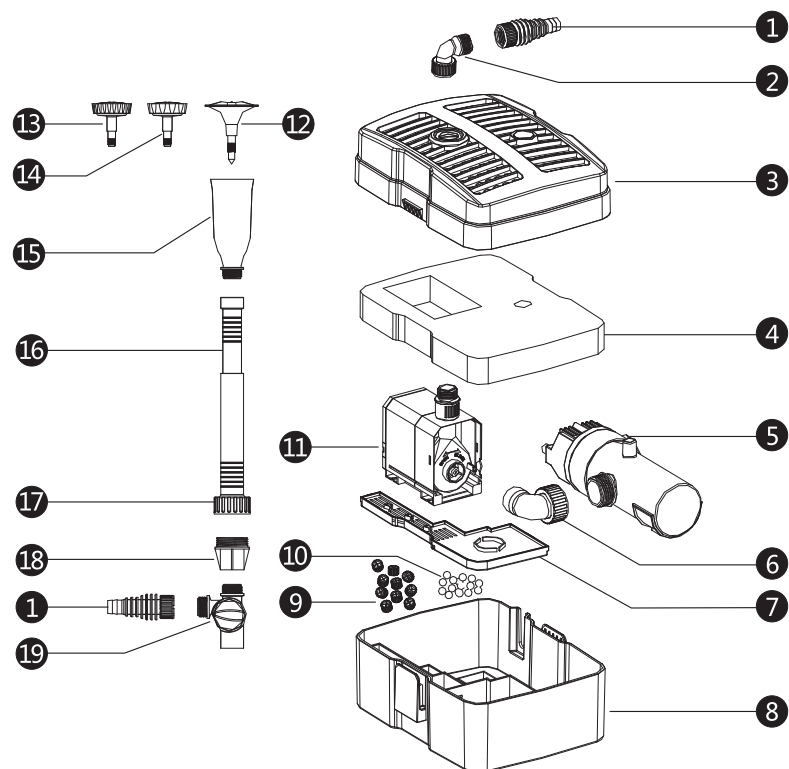
1	Nozzle	6	Outlet	11	Sponge	16	Lower filter cover	21	Screw
2	Flexible tube	7	Outlet nut	12	Middle filter cover	17	Motor	22	Quartz glass tube
3	Nut	8	UV observation window	13	O-ring 1	18	Partition 1	23	O-ring 2
4	T-joint	9	Upper filter cover	14	Curved joint	19	Partition 2	24	Quartz glass tube sleeve
5	Gasket	10	Connection thread	15	Filter material	20	UV light shell body	25	UV-C device head with cable

CUF-2500/5000/6000



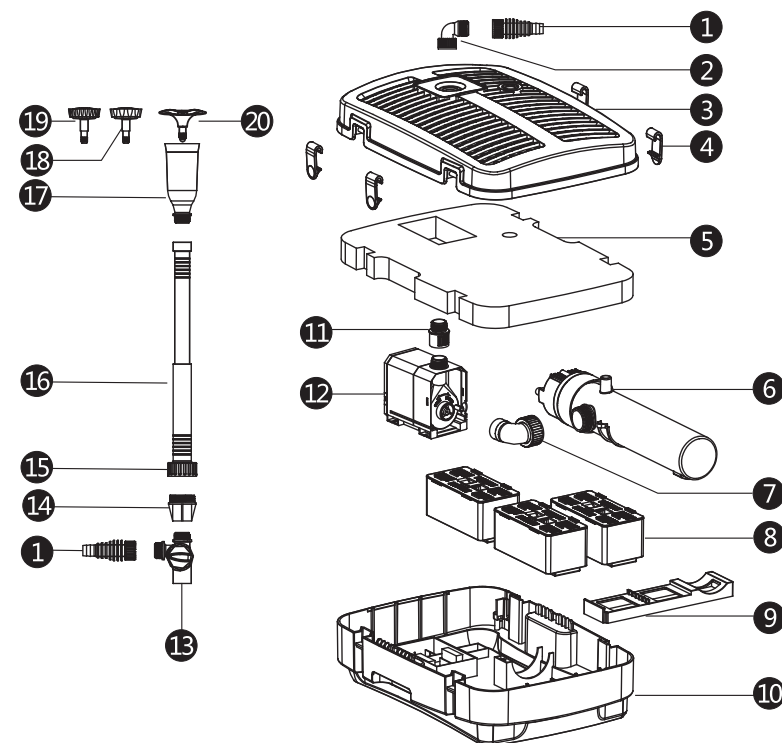
1	Outlet	9	Filter base	17	O-ring
2	Elbow pipe 1	10	Adapter	18	Connection pipe 1
3	Filter cover	11	Water pump	19	Nut
4	Sponge	12	Fountain head 1	20	Flange
5	UV-C lamp	13	Fountain head 2	21	T-joint
6	Elbow pipe 2	14	Fountain head 3	22	Screw
7	Filter material boxes	15	Fountain sets base		
8	Runner plate	16	Connection pipe 2		

CUF-2505/5005/6005

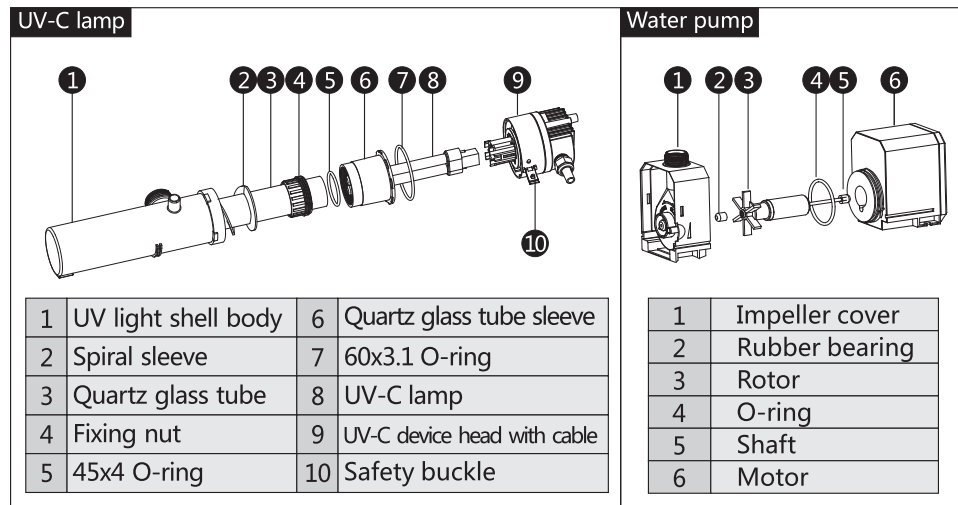


1	Outlet	8	Filter base	15	Fountain sets base
2	Elbow pipe 1	9	Bio-cell	16	Extention pipe
3	Filter cover	10	Gravel	17	Nut
4	Sponge	11	Water pump	18	Flange
5	UV-C lamp	12	Fountain head 1	19	T-joint
6	Elbow pipe 2	13	Fountain head 2		
7	Cover plate	14	Fountain head 3		

CUF-2511/5011/6011



1	Outlet	8	Filter material boxes	15	Nut
2	Elbow pipe 1	9	Runner plate	16	Connection pipe
3	Filter cover	10	Filter base	17	Fountain sets base
4	Clip	11	Adapter	18	Fountain head 1
5	Sponge	12	Water pump	19	Fountain head 2
6	UV-C lamp	13	T-joint	20	Fountain head 3
7	Elbow pipe 2	14	Flange		



INSTALLATION AND MAINTENANCE

Please switched off the electrical power when you clean the inside or change the UV-C lamp. When clean the inside or change the UV-C lamp, please take below part list as your reference.

INSTALLATION

After assembling the fountain parts according to the structure diagram, adjust the extension tube to the appropriate height and immerse the equipment under the water. If you need to pump clean water, you can remove the fountain assembly and install the water outlet pipe for using.

MAINTENANCE

MAINTENANCE FOR FILTER SPONGE AND FILTER MATERIAL:

- 1.Take of the fountain parts, and open the two clips on the side of the filter cover, then you can open the filter cover.
- 2.Take out the filter sponge and filter material(boxes), clean or change these. (suggest to clean the filter sponge every week)

MAINTENANCE FOR UV-C LAMP

1.Open the pump, remove the UV-C lamp from the pump, open the safety buckle, and rotate the lamp head counterclockwise to remove the quartz glass tube assembly. At this time, the UV-C lamp can be replaced (the CUF-2800 series does not need to open the pump, rotate the lamp head directly counterclockwise to remove).

2.If you want to clean the quartz glass tube, remove the fixing nut and take it out for cleaning.

MAINTENANCE FOR WATER PUMP

1. Rotate the impeller cover counterclockwise to the stuck position and open it outward to separate the impeller cover from the pump body.
- 2.Remove the rotor and clean all parts with the small brush.

STORAGE IN WINTER

1. Take out the equipment from water.
2. Clean the equipment thoroughly.
3. Check the parts and conditions of the equipment.
4. Keep this equipment in an area that free from frost. And in a container that with clean water.

EASILY BROKEN PARTS

1. UV-C lamp.
2. Filter materials (bio-ball, gravel, filter sponge).

TROUBLE SHOOTING

TROUBLE	REASON	SOLUTION
Water pump not work	<ul style="list-style-type: none"> •No power •Burn •Impeller block 	<ul style="list-style-type: none"> •Plug in •Change water pump •Clean the blocks
Water pump noisy	<ul style="list-style-type: none"> •Something blocked in the impeller room •Rotor or shaft wear and tear 	<ul style="list-style-type: none"> •Open the water pump and clean the blocks •Change the rotor or shaft

Water pump lack of water	<ul style="list-style-type: none"> • Impeller broken or water flow valve closed • Equipment inlet blocked or water pump inlet blocked • Lower voltage than requested 	<ul style="list-style-type: none"> • Change the impeller set or open the water flow valve • Clean the blocks • Use suitable voltage
UV-C lamp not work	<ul style="list-style-type: none"> • No power • UV-C lamp broken • Connection of the UV-C lamp not good 	<ul style="list-style-type: none"> • Plug in • Change UV-C lamp • Re-place the UV-C lamp

GUARANTEE

Note: This warranty card is for further quality information from you and timely service from our company.

1. This card is to ensure quality service for products of our company.
2. The warranty term is 1 year, valid from the date of the sales invoice (also the date of purchase), and fill the date onto this card.
3. Quick-ware parts of the pump are beyond the scope of guarantee.
4. The damage caused by incorrect use or the contrived damage will be exempted.

Warranty Registration Form

You Must Fill In All For Warranty Validation.

WARRANTY CARD

Model No.			Date of purchase		
User			Address		
Zipcode		Phone		Contact person	
Retailer					
Maintenance Records					
Y M D					