

EN

With your inspiring rating, COSTWAY will be more consistent to offer you EASY SHOPPING EXPERIENCE, GOOD PRODUCTS and EFFICIENT SERVICE!

DE

Mit Ihrer inspirierenden Bewertung wird COSTWAY konsistenter sein, um Ihnen EIN SCHÖNES EINKAUFSERLEBNIS, GUTE PRODUKTE und EFFIZIENTEN SERVICE zu bieten!

FR

Avec votre évaluation inspirante, COSTWAY continuera à fournir une EXPÉRIENCE D'ACHAT PRATIQUE, des PRODUITS DE QUALITÉ et un SERVICE EFFICACE !

ES

Con su calificación inspiradora, COSTWAY será más consistente para ofrecerle EXPERIENCIA DE COMPRA FÁCIL, BUENOS PRODUCTOS y SERVICIO EFICIENTE.

IT

Con la tua valutazione incoraggiante, COSTWAY sarà più coerente per offrirti ESPERIENZA DI ACQUISTO FACILE, BUONI PRODOTTI e SERVIZIO EFFICIENTE!

PL

Dzięki twojej opinii COSTWAY będzie mógł oferować jeszcze WYGODNIEJSZE ZAKUPY, LEPSZE PRODUKTY i SPRAWNIEJSZĄ OBSŁUGĘ KLIENTA.

US office: Fontana

UK office: Ipswich

AU office: Truganina

DE office: Hamburg

FR office: Saint Vigor d'Ymonville

PL office: Gdańsk



USER'S MANUAL

Towel Warmer ES10158US

CAUTION

- TO REDUCE THE RISK OF ELECTRIC SHOCK, DO NOT REMOVE THE COVER.
THERE ARE NO SERVICEABLE PARTS INSIDE.
- TO REDUCE THE RISK OF FIRE OR ELECTRIC SHOCK, DO NOT EXPOSE THIS UNIT TO RAIN OR MOISTURE.



The lightning flash with an arrowhead symbol within an equilateral triangle is intended to alert the user to the presence of uninsulated "dangerous voltage" within the unit's enclosure that may be of sufficient magnitude to constitute a risk of electric shock.



The exclamation point within an equilateral triangle is intended to alert the user to the presence of important operating and maintenance (servicing instructions in the literature accompanying the unit.)

IMPORTANT SAFETY INSTRUCTIONS

All of the safety and operating instructions should be read, adhered to and followed before the unit is operated.



FOR HOUSEHOLD USE ONLY



FOR ADULT USE ONLY



FOR DRY FABRIC ITEMS ONLY



SAVE THESE INSTRUCTIONS

WARNING

To reduce the risk of electric shock, burns, fire, or injury:

1. Always unplug the unit from the electrical outlet immediately after use.
2. Do not use this appliance for anything other than its intended use.
3. Do not place or store the unit where it can fall or be pulled into a tub or sink.
4. Do not place in or drop into water or other liquid.
5. Do not reach for a unit that has fallen into the water. Unplug it immediately.
6. Care should be taken so that objects do not fall into and liquids are not spilled onto the unit.
7. This unit should never be left unattended when plugged in.
8. Close supervision is necessary when this unit is used near children or disabled persons.
9. Use this unit only for its intended use as described in this manual.
10. Never operate this unit if it has a damaged cord or plug, if it is not working properly, or if it has been dropped, damaged, or dropped in water.
11. Keep cords away from heated surfaces. Do not wrap the cord around the exterior of the appliance or let the cord hang over the table or counter edge.
12. Do not use outdoors.
13. Do not alter the safety plug or use an extension cord with this device.
14. Do not operate with a voltage converter.
15. Do not touch hot surfaces.
16. Do not use accessory attachments not recommended by the manufacturer as this may cause injuries.

FCC INFORMATION

Caution: Changes or modifications not expressly approved by the party responsible for compliance could void the user's authority to operate the equipment.

This device complies with Part 15 of the FCC Rules. Operation is subject to the following two conditions:

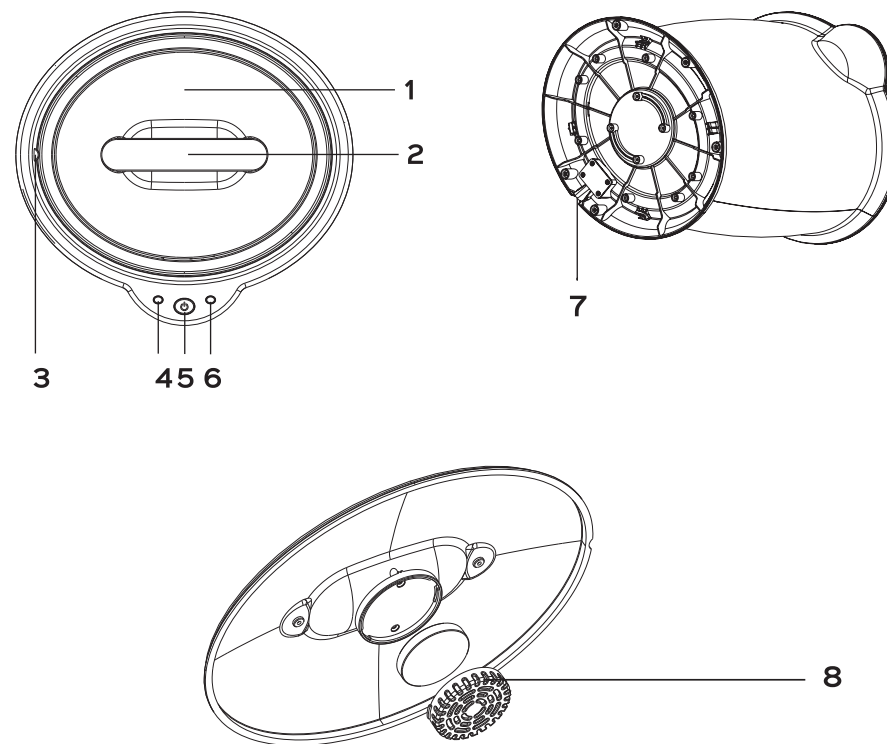
- 1) This device may not cause harmful interference.
- 2) This device must accept any interference received including interference that may cause undesired operation.

WARNING: Changes or modifications to this unit not expressly approved by the party responsible for compliance could void the user's authority to operate the equipment. Note: This equipment has been tested and found to comply with the limits for a Class B digital device, pursuant to Part 15 of the FCC Rules. These limits are designed to provide reasonable protection against harmful interference in a residential installation. This unit generates, uses and can radiate radio frequency energy and if not installed and used in accordance with the instructions, may cause harmful interference to radio communications. However, there is no guarantee that, interference will not occur in a particular installation. If this equipment does cause harmful interference to radio or television reception, which can be determined by turning the equipment off and on, the user is encouraged to try and correct the interference by one or more of the following measures:

- Reorient or relocate the receiving antenna.
- Increase the separation between the equipment and receiver.
- Connect the equipment to an outlet on a circuit different from that to which the receiver is connected.
- Consult the customer service or an experienced radio/TV technician for help.

LOCATION OF PARTS AND CONTROLS

1. Lid
2. Handle
3. Notch
4. Orange Light (Heating)
5. ON/OFF button
6. Red light (Hot Surface)
7. Power cord export
8. Fragrance holder



SET UP

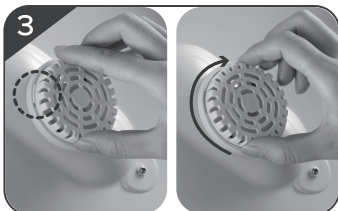
1. Remove the LID and remove any contents.
2. Place the Towel Warmer on a dry, level, hard surface.
3. Insert the Ground Fault Safety Plug into a standard 120V AC outlet



1. Open the lid, and unscrew the lid of the fragrance holder.



2. Keep the fragrance holder up and put the fragrant chip.



3. Align the card position and rotate clockwise several times.

USING THE TOWEL WARMER

The Towel Warmer can warm up to two oversized cotton bath towels.

1. Insert the power cord into an electrical outlet.
 2. The product will automatically turn off after 60 minutes.
 3. Replace the lid.
 4. Press the ON/OFF button. The orange light indicates that the unit is heating.
 5. When the interior surface reaches 131°F/55°C, the hot surface Indicator will light up. When lit, the interior surface of the towel warmer is unsafe to touch.
- Note:** For a prolonged heating time, simply press the on/off button after the heating indicator has turned off. This will begin another heating cycle.
6. After the heating cycle is completed, the inner surface of the towel warmer will remain dangerous to touch until the 'hot surface' indicator turns off. The towel warmer will automatically turn off after it has completed the heating cycle.
 7. Press the ON/OFF button at any time to stop or start the heating cycle.

TIPS FOR BEST RESULTS

1. Use cotton or cotton blend towels or articles. Linen and Denim also perform well In the towel warmer.
2. For fast and even heating, loosely pile 1 towel into the towel warmer. Tightly rolled or folded towels will take longer to heat thoroughly. 2 towels will take longer to heat than 1 towel.
3. Use only dry fabrics. Not for use with wet articles.
4. Avoid using delicate fabrics that cannot withstand high heat, such as Acrylic, Spandex, Acetate, or Nylon. Any garment indicating that a cool iron must be used may not be able to withstand the heat of the towel warmer, resulting in damage to the fabric and the towel warmer.
5. Once the heating cycle has begun, keep the lid closed. This will prevent heat from escaping. Opening the lid mid-cycle may result in a slower heating time.
(Note: condensation on the lid is normal)

CARE AND MAINTENANCE

Remove the power cord from the electrical outlet before cleaning.
Wipe with a dry cloth.

SPECIFICATIONS

Rated Voltage.....120V AC
Frequency.....60Hz
Wattage Max.....400W
Weight..... Approx.7.6 lbs
Dimension.....18.50"(H) x 14.17"(W) x 13.19"(D)

FREQUENTLY ASKED QUESTIONS



Q: Why won't my Towel Warmer turn on?



A: Make sure the Towel Warmer is properly plugged into a wall outlet



Q: Why is my Towel Warmer taking a long time to reach optimal heating temperature?



A: Be sure to only use dry towels; using damp towels will greatly extend the preheating cycle.