





USER'S MANUAL
OFFICE CHAIR
HW67586

THIS INSTRUCTION BOOKLET CONTAINS **IMPORTANT** SAFETY INFORMATION. PLEASE READ AND KEEP FOR FUTURE REFERENCE.

Please give us a chance to make it right and do better!

Contact our friendly customer service department for help first.

Replacements for missing or damaged parts will be shipped ASAP!

Follow Costway

Visit us: www.costway.com



Contact Us!

Do NOT return this item.

Contact our friendly customer service department for help first.



Before You Start

- ⚠ Please read all instructions carefully.
- ⚠ Retain instructions for future reference.
- ⚠ Separate and count all parts and hardware.
- ⚠ Read through each step carefully and follow the proper order.
- ⚠ We recommend that, where possible, all items are assembled near to the area in which they will be placed in use, to avoid moving the product unnecessarily once assembled.
- ⚠ Always place the product on a flat, steady and stable surface.
- ⚠ Keep all small parts and packaging materials for this product away from babies and children as they potentially pose a serious choking hazard.

ASSEMBLY REMARKS

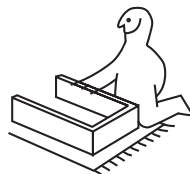
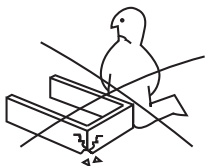
1. Please carefully confirm whether the parts are missing or damaged before assembly.
2. Please note that once installed, the gas lift is somewhat difficult to remove.
3. If you need to disassemble the chair in special circumstance, please use a plastic hammer to continuously hit the connection between the gas lift and other parts. Pay attention to safety when hitting to prevent parts from falling off and causing damage.

USAGE REMARKS

1. Please use soft cloth for cleaning.
2. Please avoid using it in places with excessive humidity or fireworks.
3. Please do not step on the chair or use it as a ladder .
4. Do NOT disassemble the gas lift.

Estimated Assembly Time: 30 minutes

Avoid damage when unpacking



- ① backrest*1 ② seat*1 ③ 1.right arm*1 ④ 2.left arm*1 ④ mechanism*1



- ⑤ headrest*1 ⑥ dust cover*1 ⑦ gas lift*1 ⑧ base*1 ⑨ casters*5



- ⑩ Hanger

- ⑪ Decorative cover



- ⑫ Hexagonal screws (M6*30)*2 ⑬ Flange hexagonal socket screw (M6*35)*2 ⑭ Hexagonal screws (M6*45)*8

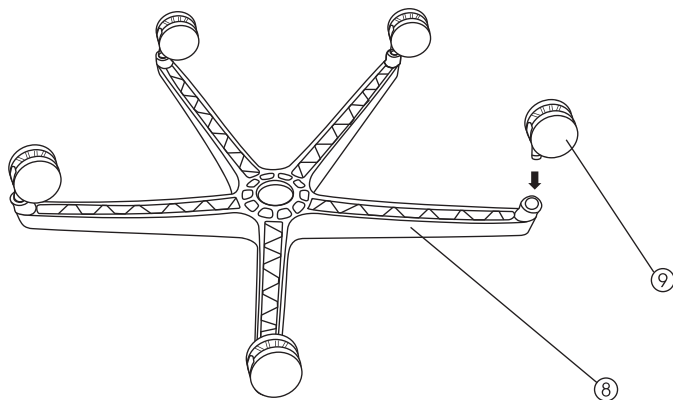


- ⑮ Hexagonal screws (M8*20)*3

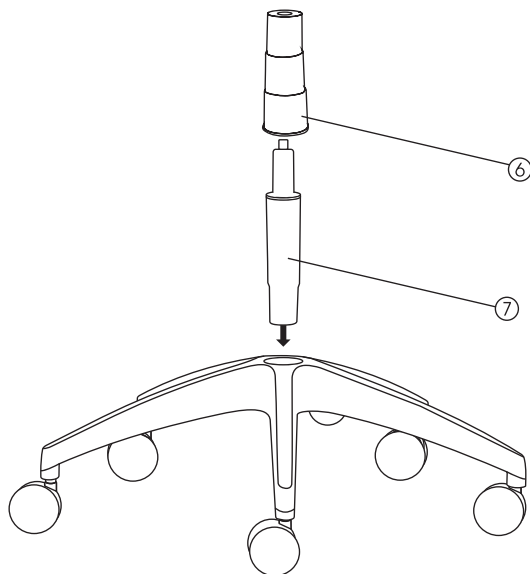
- ⑯ Allen key*1



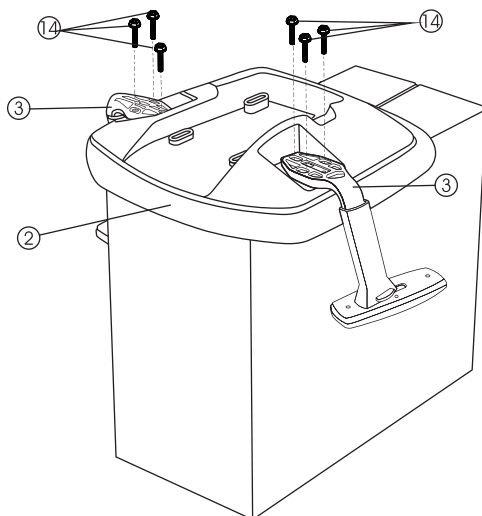
1 Caster Assembly Instruction



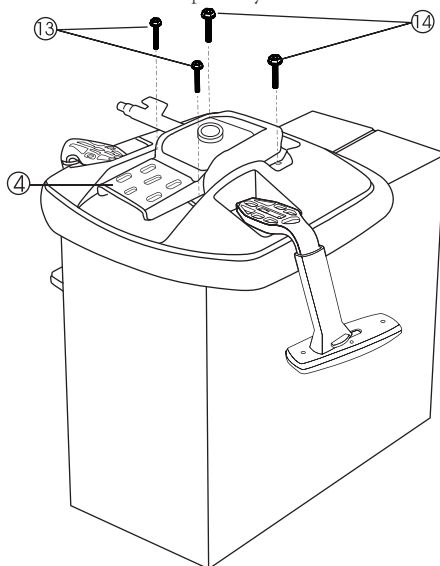
- 2** Select a smooth surface to avoid scratching the parts. Turn the star base upside down. Press the casters into holes at the end of each leg. Turn the star base upright and insert gas lift with telescoping cover into the central hole of the star base.



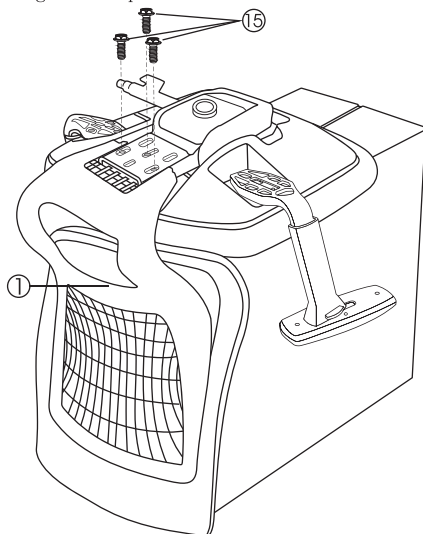
- 3** Connect the arms to the seat cushion
Attach the arms to the bottom of the seat cushion by fixing screws in the arm holes.



- 4** Note: Align the arm with the mechanism in the correct direction, referring to the FRONT label on the bottom of the seat cushion. Tighten the screws completely.

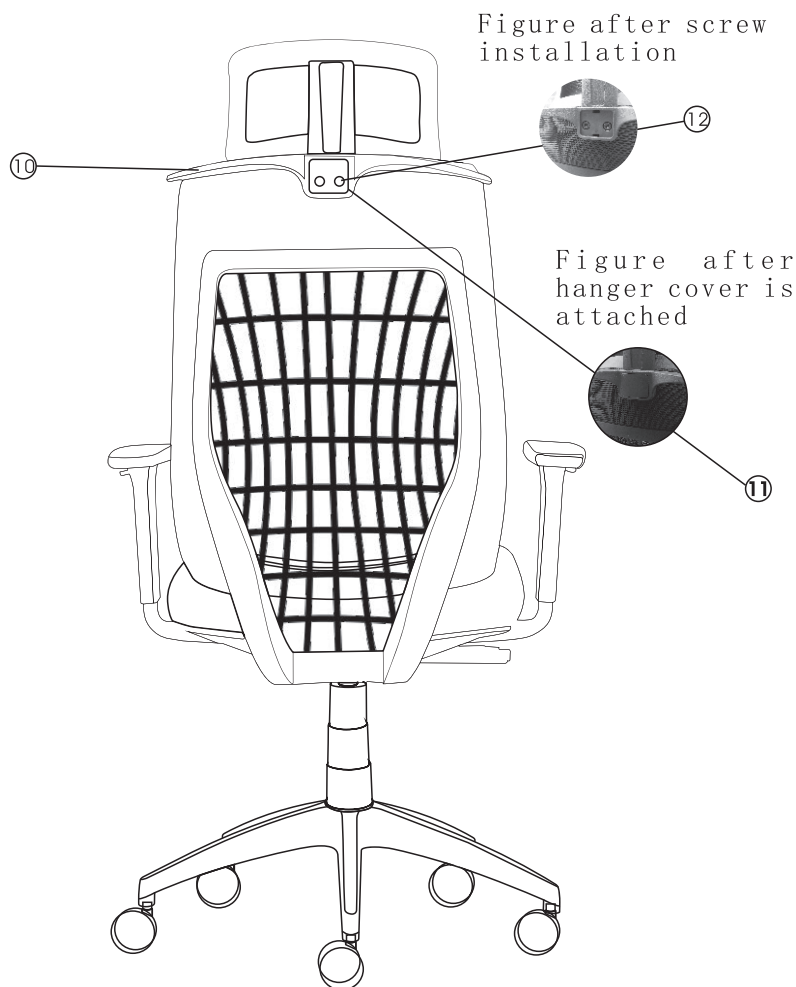


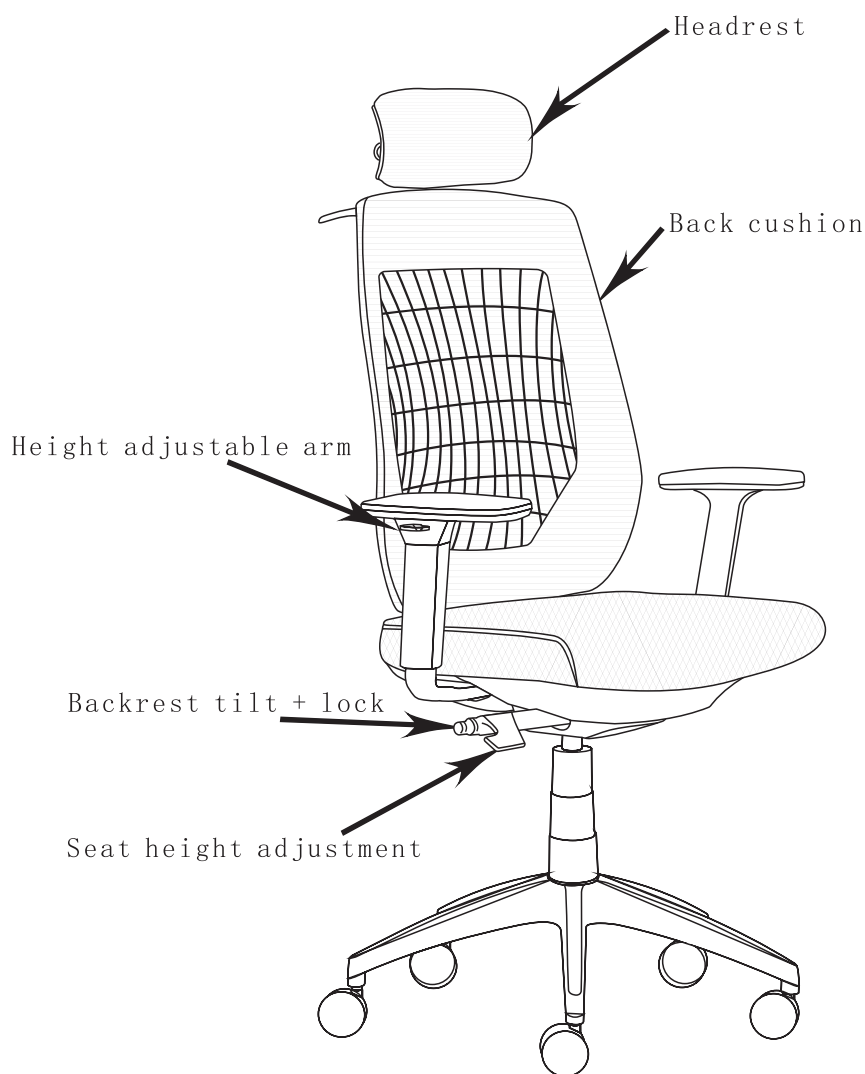
- 5 Connect the back cushion to the seat cushion
Align the back cushion with the seat cushion and attach the back support plate onto the bottom of the seat cushion by using screws and tighten up.



- 6 Assemble the upper part and lower part
Turn the assembled chair upright and locate the central hole on the seat plate. Push down firmly over the gas lift with telescoping cover until it is securely connected.







Welcome to visit our website and purchase our quality products!

With your inspiring rating, COSTWAY will be more consistent to offer you
EASY SHOPPING EXPERIENCE, GOOD PRODUCTS and EFFICIENT SERVICE!

US office: Fontana, California

UK office: Ipswich



- * Reward Points
- * Exclusive Customer Service
- * Personalized Recommendations
- * Permanent Shopping Cart
- * Order History

5 Star Rating



We would like to extend our heartfelt thanks to
all of our customers for taking time to assemble
this product and giving us valuable feedbacks.

THANK
you
☺

WARNING

FAILURE TO FOLLOW THESE WARNINGS COULD RESULT IN INJURY!

- Do not stand in this chair or use the chair as a step ladder.
- This chair is designed for one person to use at a time.
- This chair has been tested and approved for users weighing up to 275 lbs(125kg).
- This chair is NOT recommended for use by individuals weighing more than 275 lbs(125kg).
- Do not use this chair unless all bolts, screws and knobs are firmly secured.
- Check all bolts, screws and knobs every 90 days. Tighten if any are loose.
- If any parts are missing, broken, damaged or worn, stop using this chair until repairs are made and factory replacement parts are installed.
- This chair is sold with hard tread casters for use on carpeted areas. If you use your chair on a hard surface (or on a chair mat), soft tread casters should be purchased separately and installed instead of those provided.