

COSTWAY®



USER'S MANUAL
FOLDING FISH STATION
OP2767

THIS INSTRUCTION BOOKLET CONTAINS **IMPORTANT** SAFETY INFORMATION. PLEASE READ AND KEEP FOR FUTURE REFERENCE.

Please give us a chance to make it right and do better!

Contact our friendly customer service department for help first.

Replacements for missing or damaged parts will be shipped ASAP!

Follow Costway

Visit us: www.costway.com



Contact Us!

Do NOT return this item.

Contact our friendly customer service department for help first.



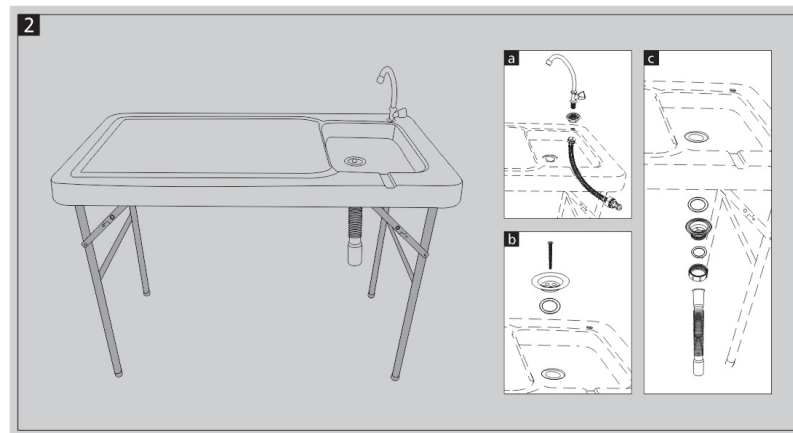
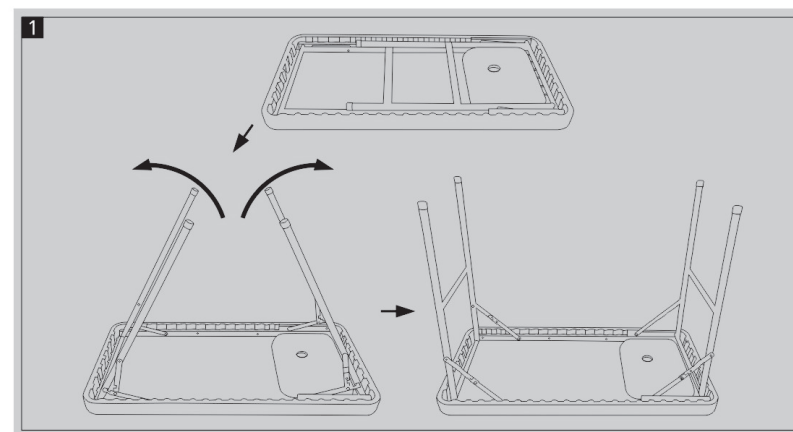
Before You Start

- ⦿ Please read all instructions carefully.
- ⦿ Retain instructions for future reference.
- ⦿ Separate and count all parts and hardware.
- ⦿ Read through each step carefully and follow the proper order.
- ⦿ We recommend that, where possible, all items are assembled near to the area in which they will be placed in use, to avoid moving the product unnecessarily once assembled.
- ⦿ Always place the product on a flat, steady and stable surface.
- ⦿ Caution: Read the warnings carefully. Avoid kids get touch of small parts or plastic bag.

Step by step instructions:

Step 1: Remove Station from the box and position it on the ground as illustrated below.
Open up each leg set and lock into place.

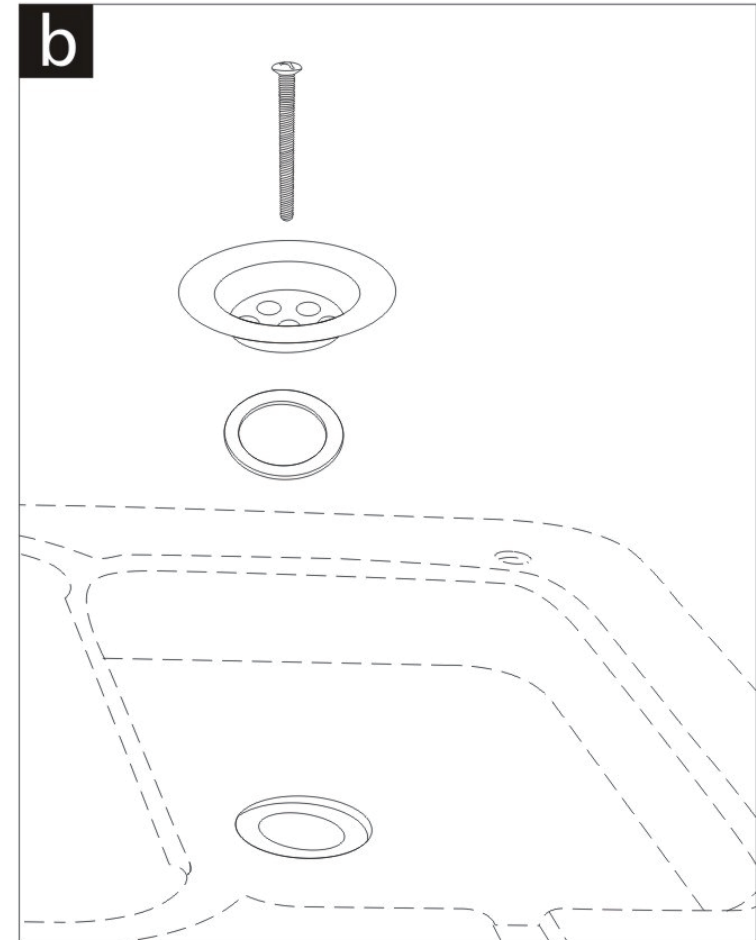
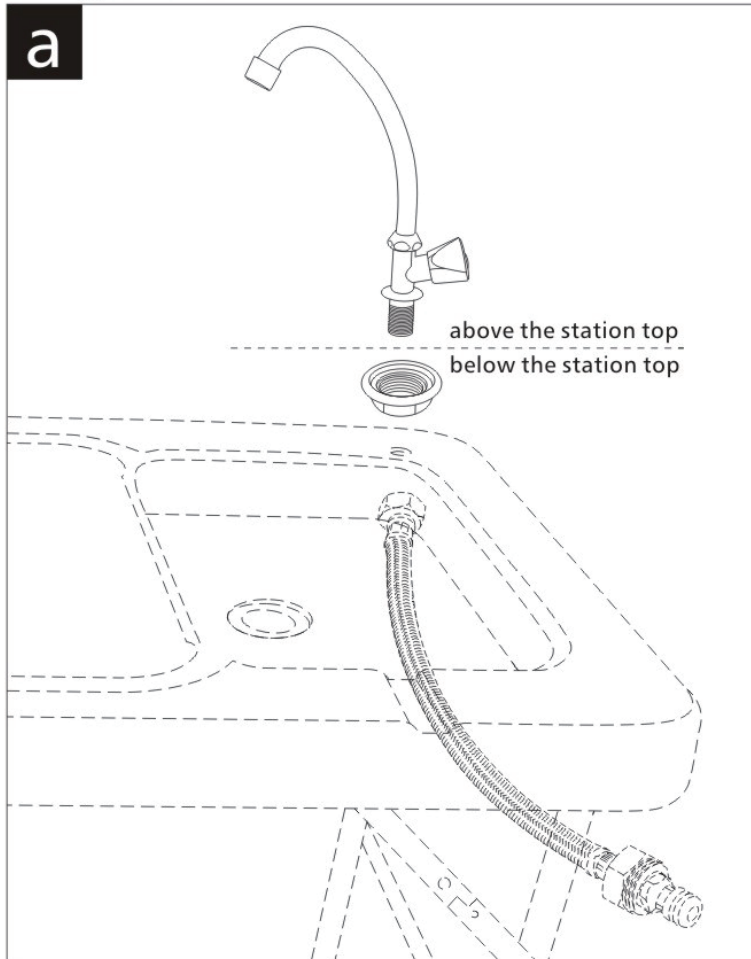
(MAKE SURE LEGS ARE COMPLETELY LOCKED IN POSITION BEFORE USING!)

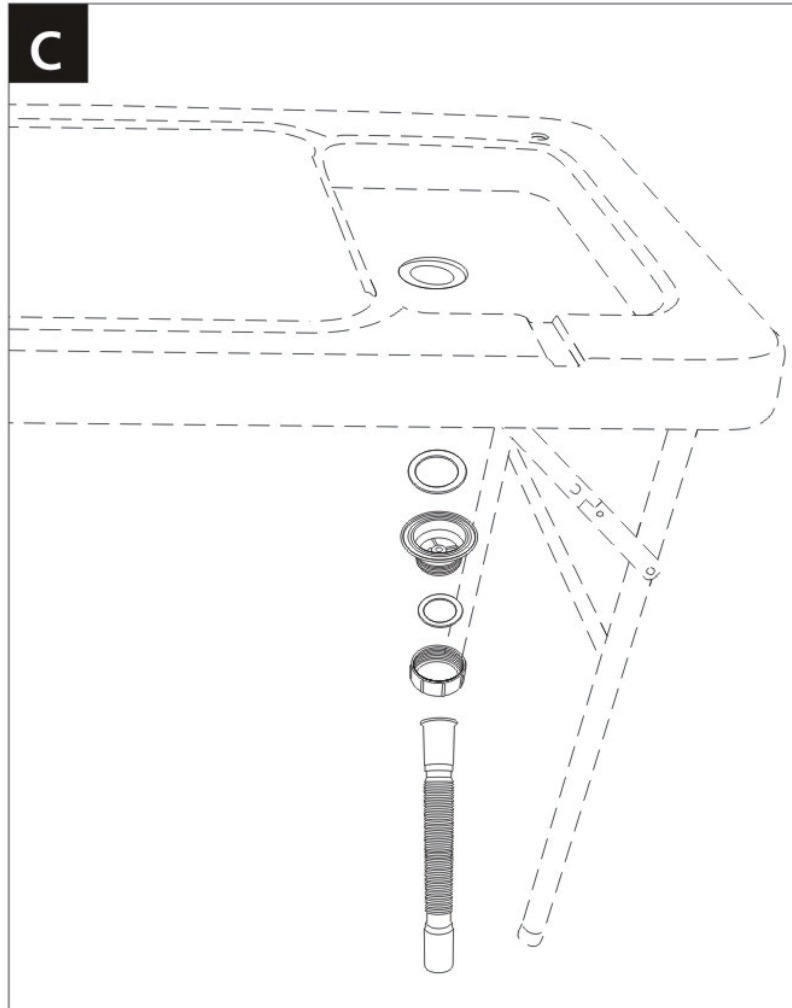


Step 2: Faucet and Drain Assembly.

- a) Faucet Connection: The $\frac{3}{4}$ " female hose end is connected to the faucet end and the 1" female end is connected to a standard U.S. garden hose.
- b) Drain Connection: The metal drain, Screw and rubber washer are placed on the station's top side.
- c) Drain Connection: The rest or the components are placed under the stations top side.(see diagram)

Larger View:





Welcome to visit our website and purchase our quality products!

Your suggestions and comments for COSTWAY are really important to us!
We sincerely solicit you to go back to our shop and leave a good rating in just a simple click. It would be quite encouraging if you could kindly do so like below:

★★★★★ Great products so far

February 24, 2019

Great products so far. Fast delivery, easy setup, and working without any issues.

**With your inspiring rating, COSTWAY will be more consistent to offer you
EASY SHOPPING EXPERIENCE, GOOD PRODUCTS and EFFICIENT SERVICE!**

US office: Fontana, California

UK office: Ipswich



- * Reward Points
- * Exclusive Customer Service
- * Personalized Recommendations
- * Permanent Shopping Cart
- * Order History

5 Star Rating



We would like to extend our heartfelt thanks to
all of our customers for taking time to assemble
this product and giving us valuable feedbacks.

THANK
you
😊