



COSTWAY®

**Please give us a chance to make it right and do better !**

Contact our friendly customer service department for help first.  
Replacements for missing or damaged parts will be shipped ASAP !

US office: Fontana    UK office: Ipswich    AU office: Truganina



## Contact Us !

**Do NOT return this item.**

Contact our friendly customer service department for help first.



US:cs.us@costway.com  
UK:cs.uk@costway.com  
AU:cs.au@costway.com

## USER'S MANUAL

### Inflatable Bounce House NP10535

THIS INSTRUCTION BOOKLET CONTAINS **IMPORTANT** SAFETY INFORMATION. PLEASE READ AND KEEP FOR FUTURE REFERENCE.



## Before You Start

Please read all instructions carefully and keep it for future reference.

### Warnings:

Attention: For home use only.

Attention: The product is not suitable for the children under 3 years

Danger: Keep all small parts and packaging materials for this product away from babies and children, otherwise they may pose a choking hazard.

Danger: Lack of attachment may cause a risk of tipping or falling hazard.

### General Warnings:

⚠ The product must be installed and used under the supervision of an adult.

⚠ Read through each step carefully and follow the proper order.

⚠ Remove all packaging, separate and count all parts and hardware.

⚠ Please ensure that all parts are correctly installed, incorrect installation can lead to a danger.

⚠ We recommend that, where possible, all items are assembled near the area in which they will be placed in use, to avoid moving the product unnecessarily once assembled.

⚠ Ensure a secure surface during installation, and place the product always on a flat, steady and stable surface.

⚠ Please check and maintain it regularly, and the most important part needs to be suspended, fixed, or anchored to the ground.



Inflatable Bounce House

Age range:  
3-10 years old

### ⚠ Important Note

Please read all instructions carefully before installation and save the instructions for future reference. For your child's safety, please follow all the rules. Failure to follow these instructions may result in serious injury or death.

### ⚠ Safety Warning

This product can only be inflated or deflated by a competent adult. Follow all instructions provided.



## Safety Warning: Assembly

1. Installation must be carried out by a competent adult.
2. Only suitable for soft soil, do not place on concrete, asphalt, wood or other hard surfaces. Carpeting hard floors may not prevent injuries. Falling on hard surfaces can result in head or other serious injuries.
3. Cannot be used for rental or commercial purposes. For family use & outdoors use.
4. This product is heavy, please be careful when using it.
5. The product should not be dragged across concrete pavements or other rough surfaces.
6. Keep the product away from fire and flames.
7. Do not install the product in windy or rainy conditions.
8. The slide should not face the sun as this can make children dizzy while using the product.
9. Should be placed on flat ground, if placed on inclined ground may occur toppling.
10. Place the product on a soft ground at least 2 meters / 7 feet away from any other objects (such as fences, trees, water sources, hanging branches, clotheslines or wires). Make sure the area around the product is safe. Check whether there are sharp objects on the ground.
11. Electric wires must not be passed under the product.

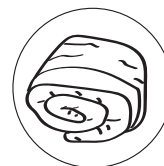
12. Keep the blower (air pump) and power cord away from children and water. Place the blower (air pump) where it will not inhale dust or leaves.

13. Note: During use, the blower (air pump) should remain on and continue to inflate. Since the product is kept inflated by a constant air flow, air leakage from the joint is normal and necessary, so the product will not over-expand.

-----

## Assembly Instruction

- 1.** Unfold the product in its entirety as the picture shows.



Take out the product



Roll the product and expand it

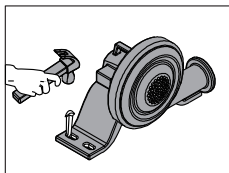
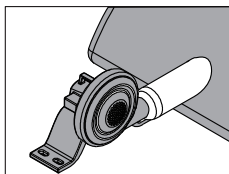


Open the product

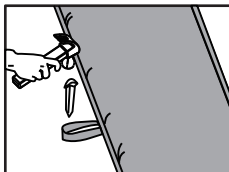


Fully expand the product

**2.** Place the blower (air pump) where it will not inhale dust or leaves, and keep the blower (air pump) and power cord away from children and water. Note: Please make sure the power supply is safe and reliable. During use, the blower (air pump) should remain on and continue to inflate. After stretching the air pipe, position the blower (air pump) at the end of the air pipe. Wind one end of the tube around the blower (air pump), blow out the air after tying. The inflation tube should be straight and not twisted. If necessary, adjust the position of the blower (air pump). Then use ground piles to firmly fix the blower (air pump) on the ground.

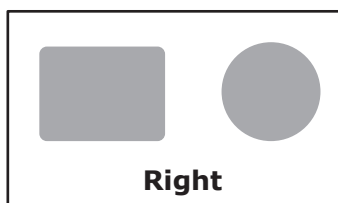
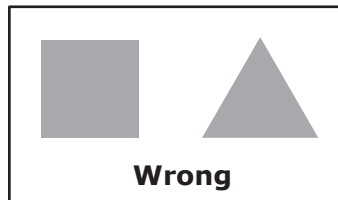


**3.** Please fix the product correctly, and be sure to fix the product with ground stakes before use. In order to prevent overturning during the game, please push the pile firmly into the ground, and regularly check whether the ground pile is firm. Ground piles should be flush with the ground or buried in the ground to reduce the risk of tripping. Please ensure that the product is fully inflated before children enter the playground. Using this product when inflated or excessively deflated may cause product instability and may cause serious injury. Since the product is kept inflated by a constant air flow, air leakage from the joint is normal and necessary, so the product will not over-expand.



## Maintenance Instruction

Outdoor products are easy to wear and require proper maintenance. When the fabric is found to be invalid, fragile or damaged, it must be repaired in time, and the provided patch can be used to repair it. To repair, deflate thoroughly and make sure the surface is dry. Cut the patch to fit the patch. Apply glue on both the repair patch and the damaged surface, let the glue dry for 30 seconds, and then stick the patch on the surface. Allow to dry at least 4 hours before using. Store the product and blower in a dry environment when not in use.



## Disassembly Instructions

1. Make sure that after all children leave the product, turn off the blower (air pump), remove the inflation tube, unplug the power cord of the blower (air pump), remove the ground pile, and store the blower (air pump) in a dry place for future use. When the product is not in use, do not put the product and the blower (air pump) in the rain
2. After discharging the air completely, fold the product for storage.





## Safety Warning



Age range



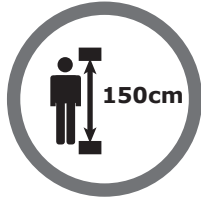
Maximum of 3 children



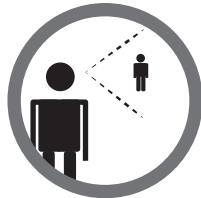
Weight of each child must not exceed 45kg/99lbs



Maximum weight of all children is 135kg/ 298 lbs



Maximum height of child is 150cm/ 5 feet



Children must be under the supervision of adult at all times



Sharp objects are prohibited



Shoes and eyes are prohibited



No eating or drinking in this area



Prohibit head down sliding



Prohibit to flip



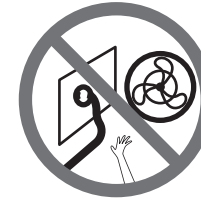
No playing



Do not use on rainy days



Do not use in windy weather



Do not let children touch the fan or power cord



Must be secured with ground piles

1. Failure to follow the instructions may cause serious injury.
2. The product is heavy, so be careful when handling the product.
3. Must be installed and removed by adult.
4. Do not install, use or expose the product under any adverse outdoor weather conditions, such as, but not limited to: rain, lightning, hail, snow, strong wind.
5. Keep away from fire and keep the fabric away from all flames and fire sources.
6. Keep the area around the product clean, remove debris and prevent slipping.
7. It must be fully inflated before children enter. If you don't do this, the product will be unstable and there may be a risk of serious injury.
8. To prevent overturning or other hazards, the product and all its anchorage points should be inspected regularly before and during use, and re-fixed appropriately to ensure that they remain safely on the ground during outdoor use.
9. Before and during use, check the air loss. If the product starts to deflate, please take away all children and check if the power cord is disconnected or if there is a power failure.
10. The product should be checked regularly for potential unsafe conditions, such as damage to the power cord, plug, casing or parts. If such damage is found, the product should not be used until it is properly repaired.
11. Don't let the product inflate overnight.
12. In order to avoid injury, competent adult supervision is required at all times to guide children, and children should be instructed to use this product correctly.

13. Please keep children and pets away from the blower (air pump), do not insert fingers, toes, foreign objects, etc. into the blower, otherwise it may cause injury.
14. Children must take off helmets, headgear, shoes and glasses, and take out any sharp objects from their pockets, as they may pierce the surface.
15. In order to ensure safety, it is necessary to need to wear socks, long sleeves, and long pants when playing on this product. Inappropriate activities are not allowed.
16. Do not jump off the slide. Slide forward with your feet pointing at the slide, not your head first, to avoid the risk of serious injury or death.
17. If it gets wet, don't let children play on it, dry it thoroughly before use.
18. Don't eat in the play area.
19. Only three children are allowed to play at most, and the weight of each child must not exceed 45kg/99lbs.