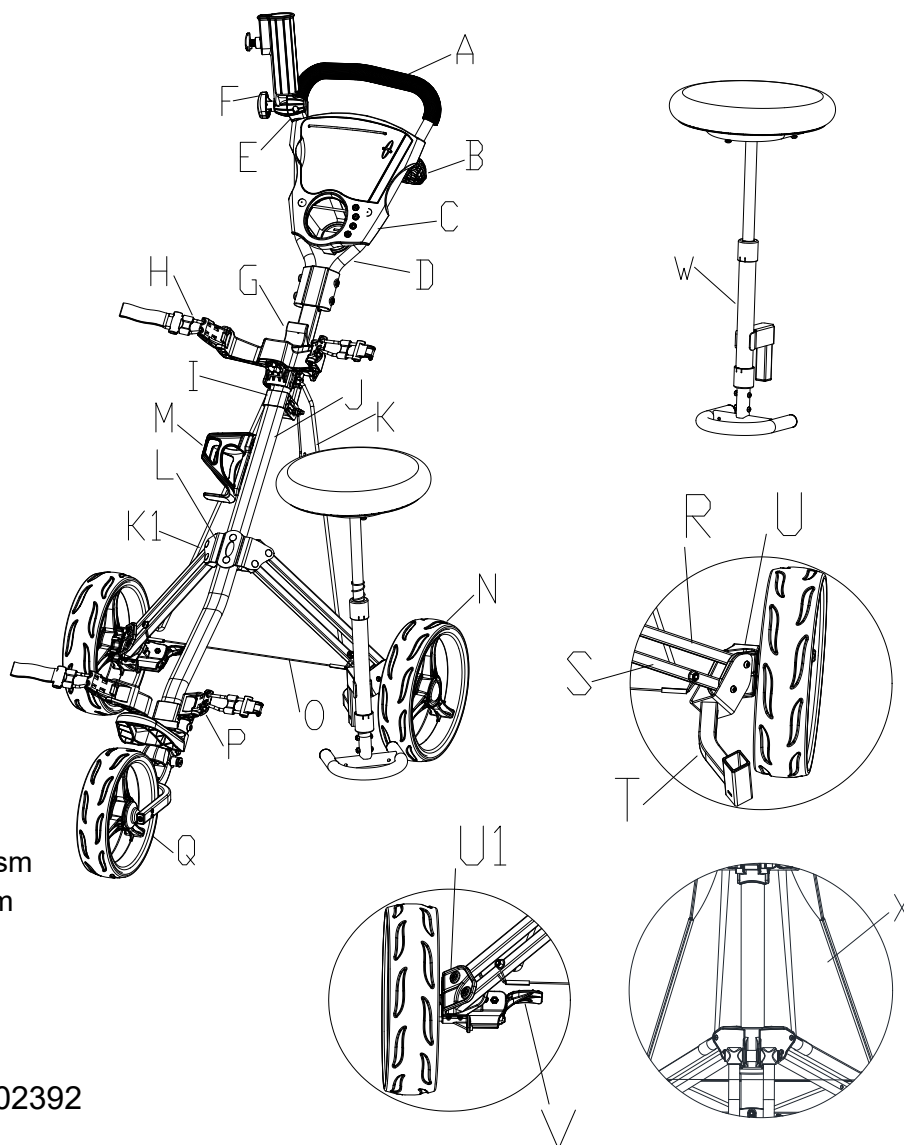


## PARTS LIST

- A Foam Handle
- B Net Set
- C Scorecard Holder
- D Handle Tube
- E Umbrella Holder Base
- F Umbrella Holder
- G Sliding Lock
- H Upper Bracket
- I Joint
- J Main Frame Tube
- K Right Weight Stabilizer
- K1 Left Weight Stabilizer
- L Leg Bracket
- M Beverage Holder
- N Rear Wheel
- O Anti-Splay Wire
- P Lower Bracket
- Q Front Wheel
- R 2 Holes Leg Frame
- S 3 Holes Leg Frame
- T Seat Fixed Bar
- U Right Wheel Locking Mechanism
- U1 Left Wheel Locking Mechanism
- V Footbrake
- W Seat
- X Basket



202392

## MAINTENANCE

To clean, wipe cart with a soft,dry cloth. Car polish may be used to maintain finish. Lubricate moving parts every 6 months.

## Warning:

For your own safety,please read and understand these warnings and keep this user guide for future reference.

Always make sure the cart is fully extended and locked before use.

Always make sure the cart is folded and locked properly before lifting or transporting.

Do not run while using this product.

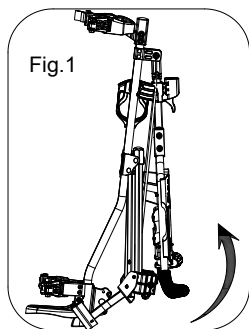
Do not use accessories other than those designed for use with your carts.

Keep all packing materials away from children and recycle where possible or where required by law

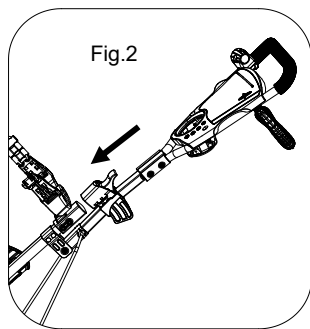
Warning:Keep hands and fingers away from moving or sliding parts!

Always keep control of the buggy - Do not let it run down hills without full control.

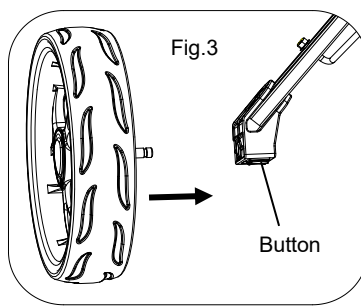
## Assembly Details



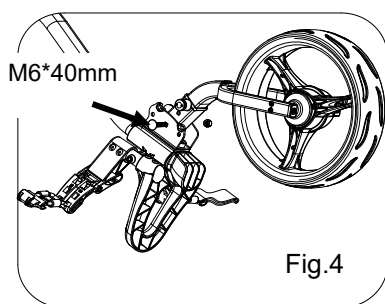
Lift the handle to level position as Fig.1.



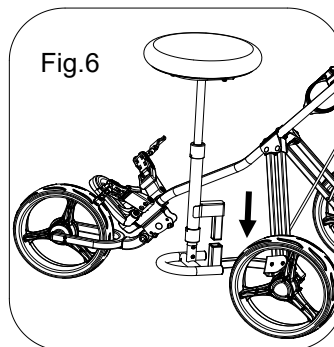
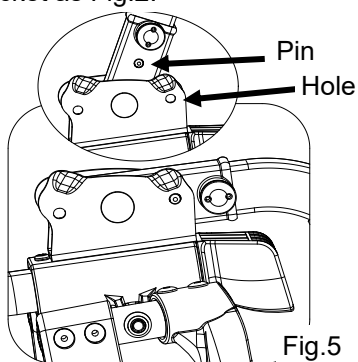
Move the slide lock downside and lock to upper bracket as Fig.2.



Press the button on the wheel lock mechanism to assembly rear wheel as Fig.3.

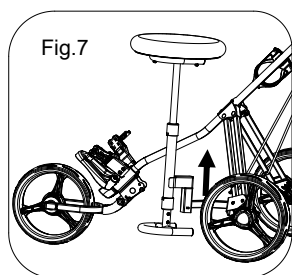


Assembly front wheel set into the lower frame by 1pc M6\*40mm screw and nut as Fig.4, then rotate until the pin inserts in the hole as Fig.5.

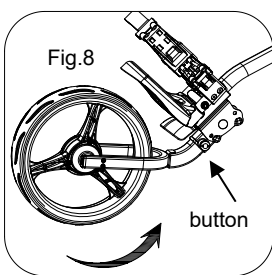


Assembly the seat as Fig.6.

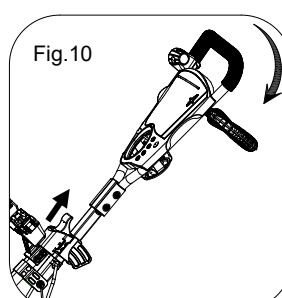
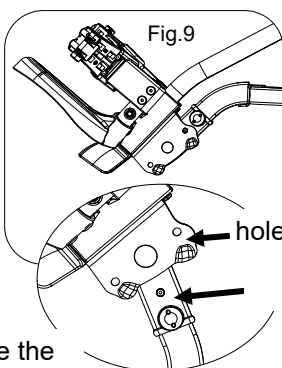
## Folding Steps



Release the seat as Fig.7.



Press the button to release the front wheel, then fold until the pin inserts in the hole as Fig.8 and 9.



Move the slide lock up to release the handle as Fig.10.

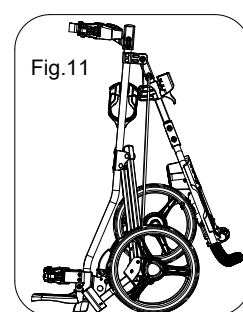
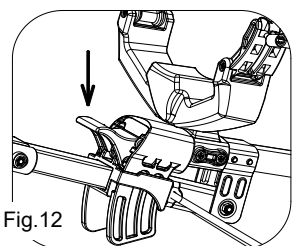
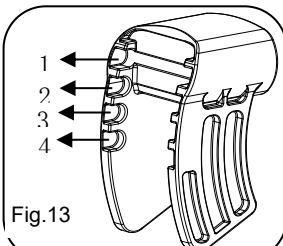


Fig.11 shows the folded position.

## Slide Lock Mechanism

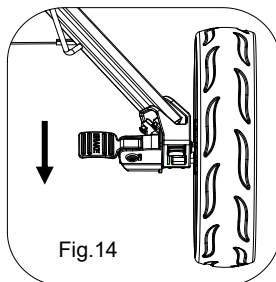


Press the red button and adjust the slide lock to required handle height as Fig.12.



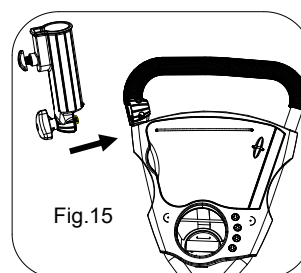
Adjustable handle with 4 positions height as Fig.13.

## Foot Brake Mechanism



Push on the brake pedal to stop the rear wheel and pull off to release as Fig.14.

## Umbrella Holder Assembly



To Put In Use: Simply attach the umbrella holder onto the cart in fig. 15.

# Front Wheel Adjustment Mechanism

1.If during use, you find the cart veers to the right or left please see the instructions below to correct this problem.(Fig.1)

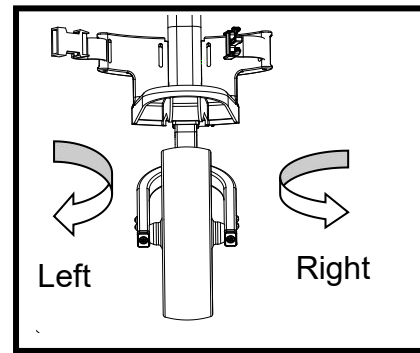


Fig .1

2.If the cart veers to the left, face the front wheel of the cart and use the Allen wrench provided to screw the right bolt counterclockwise or the left bolt clockwise until the front wheel is centered between the front

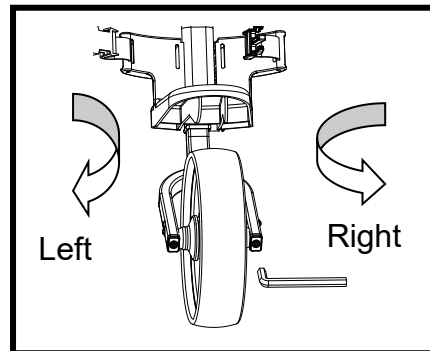


Fig .2

3.If the cart veers to the right, face the front wheel of the cart and use the Allen wrench provided to screw the left bolt counterclockwise or the right bolt clockwise until the front wheel is centered between the front fork.(Fig.3)

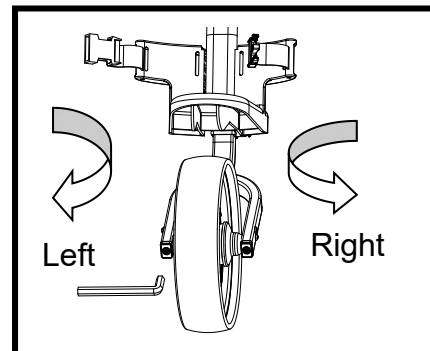


Fig .3