

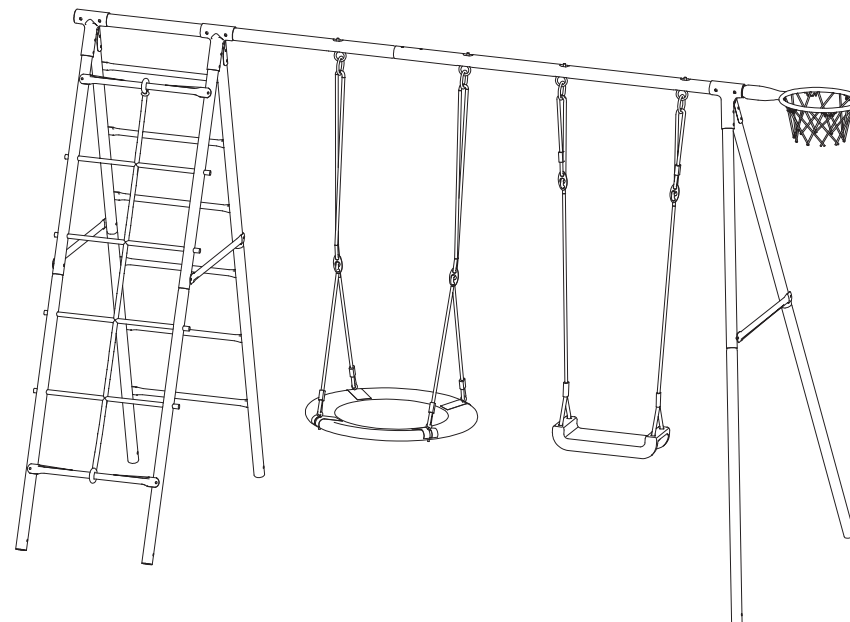


COSTWAY®

Please give us a chance to make it right and do better !

Contact our friendly customer service department for help first.
Replacements for missing or damaged parts will be shipped ASAP !

US office: Fontana UK office: Ipswich



Contact Us !

Do NOT return this item.

Contact our friendly customer service department for help first.



US: cs.us@costway.com

UK: cs.uk@costway.com

USER'S MANUAL

Outdoor Swing Set NP10248

THIS INSTRUCTION BOOKLET CONTAINS **IMPORTANT** SAFETY INFORMATION. PLEASE READ AND KEEP FOR FUTURE REFERENCE.



Before You Start

Please read all instructions carefully and keep it for future reference.

Warnings:

Attention: The product is not suitable for the children under 3 years

Danger: Keep all small parts and packaging materials for this product away from babies and children, otherwise they may pose a choking hazard.

Danger: Lack of attachment may cause a risk of tipping or falling hazard.

General Warnings:

- ⚠ The product must be installed and used under the supervision of an adult.
- ⚠ Read through each step carefully and follow the proper order.
- ⚠ Remove all packaging, separate and count all parts and hardware.
- ⚠ Please ensure that all parts are correctly installed, incorrect installation can lead to a danger.
- ⚠ We recommend that, where possible, all items are assembled near the area in which they will be placed in use, to avoid moving the product unnecessarily once assembled.
- ⚠ Ensure a secure surface during installation, and place the product always on a flat, steady and stable surface.
- ⚠ Please check and maintain it regularly, and the most important part needs to be suspended, fixed, or anchored to the ground.

ASSEMBLY ADVICE

Please follow the assembly instructions exactly as given

-This product must be assembled by an adult.-Keep a copy of your assembly instructions for future reference. This can be particularly useful for identification of parts if any after sales service is required.

-The installation requires a 16"/40cm minimum distance between the ground and a 2-person swing and 14"/35cm minimum distance between the ground and swings. These distances are important for safe use. After having

assembled the playground, check these distances. In case of non-conformity, do not hesitate to contact our after sales service.

-We advise that the swing set is not faced towards the sun

-Before commencing, check that none of the parts are missing. If you find that you are missing a part, please contact our after-sales service department.

-Dispose of packaging thoughtfully.

-Do not allow children to play with packaging.

SAFETY ADVICE

-This product must not be used by children under the age of 36 months. It is suitable only for children between the ages of 3 and 12 years with a maximum weight of 165 lbs. 1 75 kg. It must be used under adult supervision.

-As this product contains small parts that could be swallowed, please keep parts away from children under 36 months.

-This product is only for private use at home and must never be used in parks and public gardens, in schools, camp sites, hotels, public leisure areas, etc.

-The swing set should be set up on a flat surface 6.5 ft 1 2 meters away from all other things, structures or obstacles (walls, fences, trees, washing lines or electrical cables etc.) that could cause

injury during use, such as concrete, asphalt or other hard surfaces. We recommend installation over grass or other such soft surfaces.

-This swing set must be embedded firmly into the ground. Please follow the instructions carefully for doing so. Only use this product when the concrete is dry.

-Anchors should be placed level with or below ground level in order to reduce tripping hazards-The anchorage must be checked regularly, in addition to the hooks and fixtures.

-Dispose of packaging thoughtfully.

-Do not allow children to play with packaging.

FIXING INTO THE GROUND

- Assemble the swing set completely and place it in the desired place.
 - Locate and mark the position for the sealing legs.
 - Check the dimensions showed on the diagram, and correct if necessary.
 - Under the four feet, mark a square of 13.7" X 13.7" 1 350 X 350 mm and dig a 13.7"/ 350mm deep hole.
 - Fill these holes with concrete following the diagram. The top of the concrete should not exceed ground level.
 - Place the sealing legs in the concrete in the located place. Make sure the drilled end of the sealing legs is above the level of the concrete.
 - Once the concrete is set, screw the feet into the sealing legs.
 - Ensure that the concrete is completely dry before using the swing.
 - Cover the concrete with soil.
- We strongly advise checking this anchoring periodically.

MAINTENANCE

All metal parts are galvanized steel and powder coated for rust protection; however, in certain areas close to the sea we advise that additional rust prevention treatment may be necessary.

-The surfaces of all the parts should be checked at least once a month, especially for the fixtures such as hooks on the overhead beam. If the fixtures and hooks show wear over 10% of their original thickness, then they should be replaced with the same fixtures as those originally provided.

-All parts that are under constant friction should be oiled regularly with a suitable lubricant.

-The ground on which the product is placed should be controlled regularly. All

elements such as stones or other objects that could cause injury in the case of a fall should be removed.

-It is advised to remove the apparatus during the winter period, when not in use, to avoid any deterioration due to bad weather conditions.

-Check for signs of wear, especially where swinging apparatus' plastic ring attaches to the metal swing hooks on the upper beam. As soon as the plastic ring shows signs of deterioration, the apparatus should be replaced.

-All used apparatuses and/or parts must be replaced by a part delivered by our after sales service, or by an approved retailer.

PRACTICAL ADVICE

Frequent questions and observations

- Assemble the swing set completely and place it in the desired place.
 - Locate and mark the position for the sealing legs.
 - Check the dimensions showed on the diagram, and correct if necessary.
 - Under the four feet, mark a square of 13.7" X 13.7" 1 350 X 350 mm and dig a 13.7"/ 350mm deep hole.
 - Fill these holes with concrete following the diagram. The top of the concrete should not exceed ground level.
 - Place the sealing legs in the concrete in the located place. Make sure the drilled end of the sealing legs is above the level of the concrete.
 - Once the concrete is set, screw the feet into the sealing legs.
 - Ensure that the concrete is completely dry before using the swing.
 - Cover the concrete with soil.
- We strongly advise checking this anchoring periodically.

Safety

Safety checks should be carried out regularly on this product. These checks should include, if necessary, removing any sharp edges, replacing missing screw

covers, and tightening the nuts and bolts. These checks should be done to avoid any danger or overturning of the swing set through normal wear and tear.

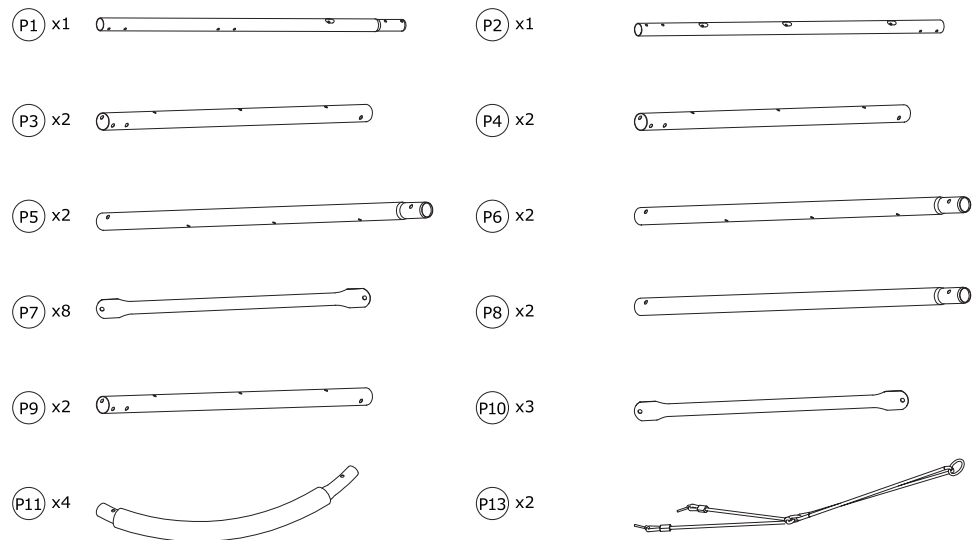
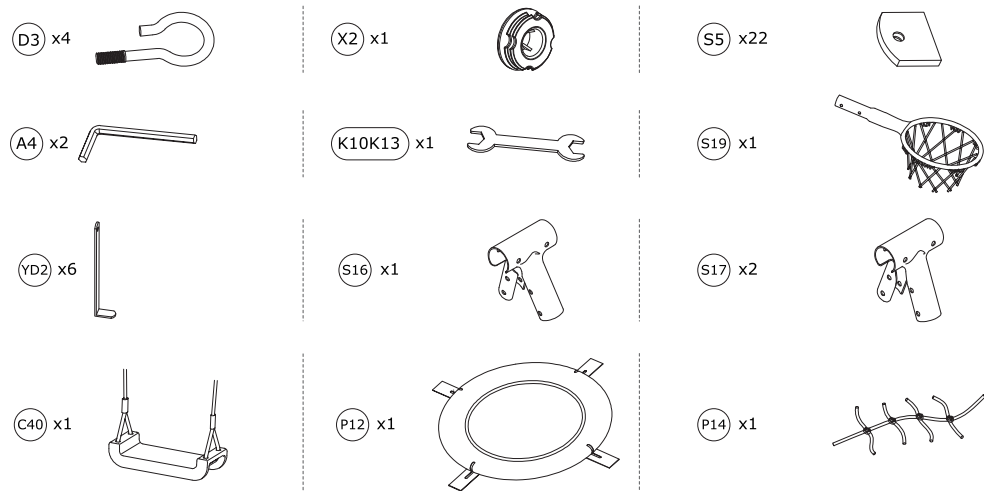
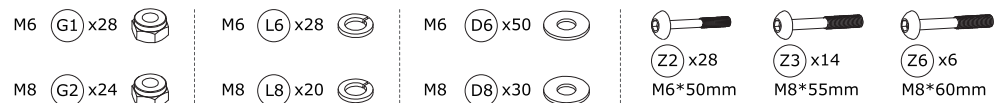
Comfort

If the swing set develops a squeak apply a suitable gel lubricant. Do not use liquid lubricant as it will run down the fixings and apparatus. The height of the swing can be adjusted using the plastic eyelet fixture. By pulling the rope through the fixture, the height of the seat can be adjusted to suit the user.

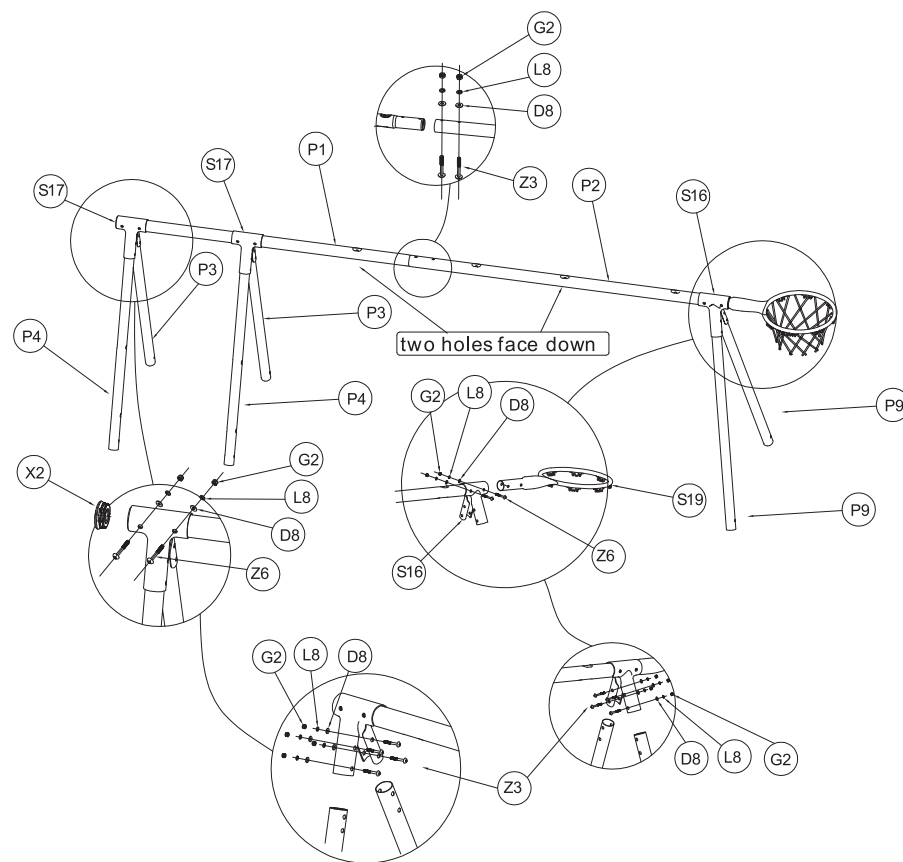
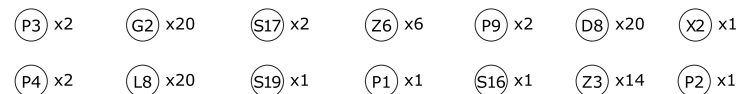
The dimensions given are indicative only, they may vary according to the assembly method.

This SwingSet must be used under adult supervision. Keep any additional components, they may be useful for later operation of maintenance.

CAUTION! Danger of falling.

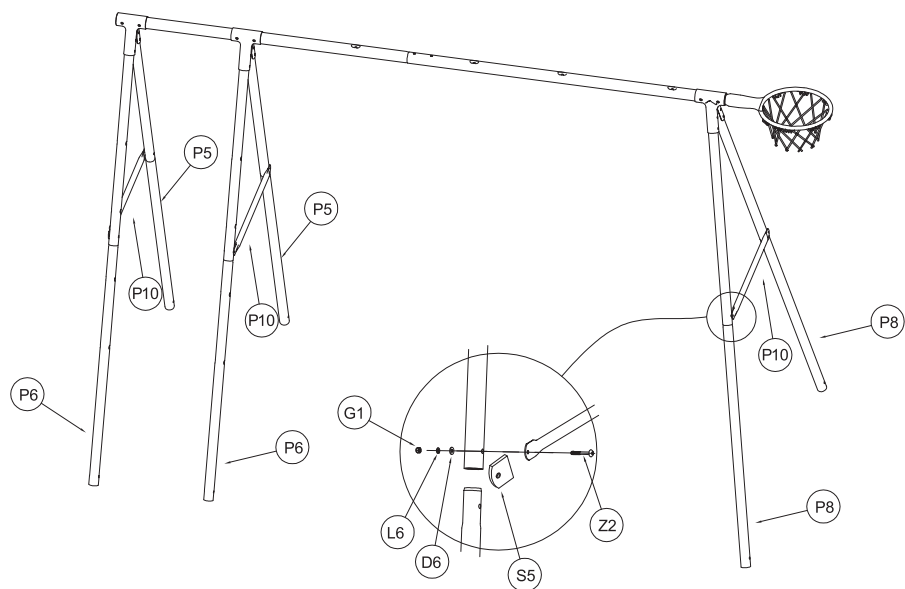


1



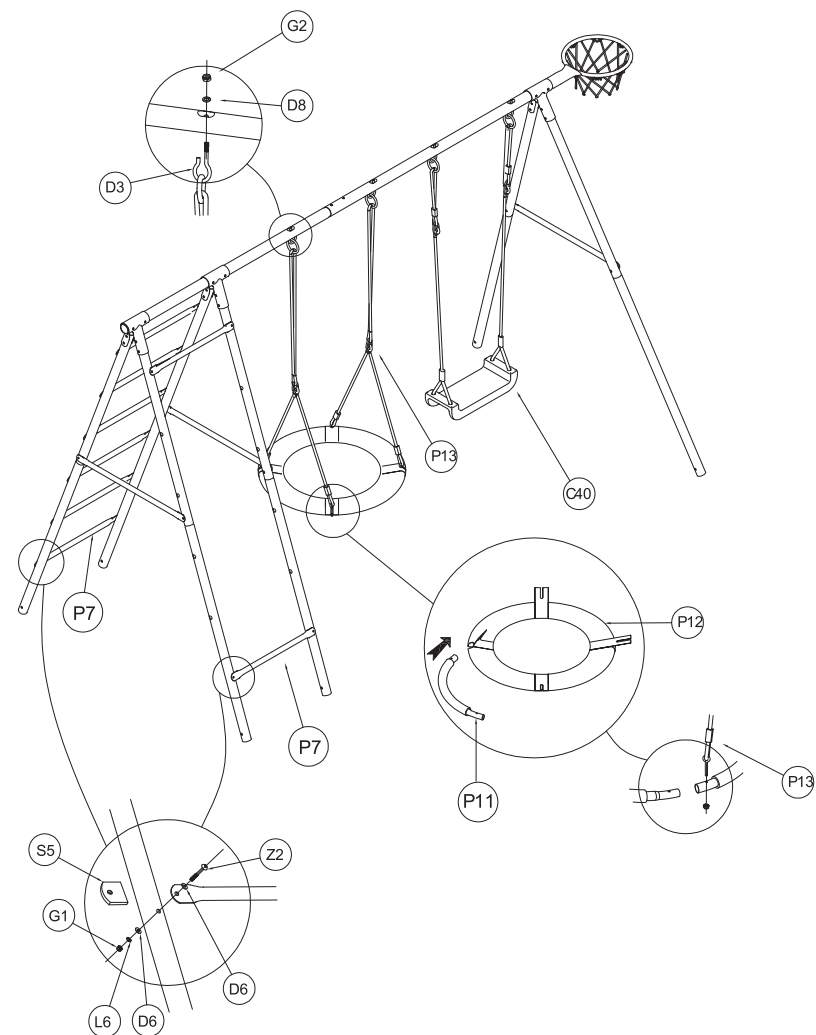
2

(G1) x6 (Z2) x6 (P8) x2
 (L6) x6 (P5) x2 (P10) x3
 (D6) x6 (P6) x2 (S5) x6



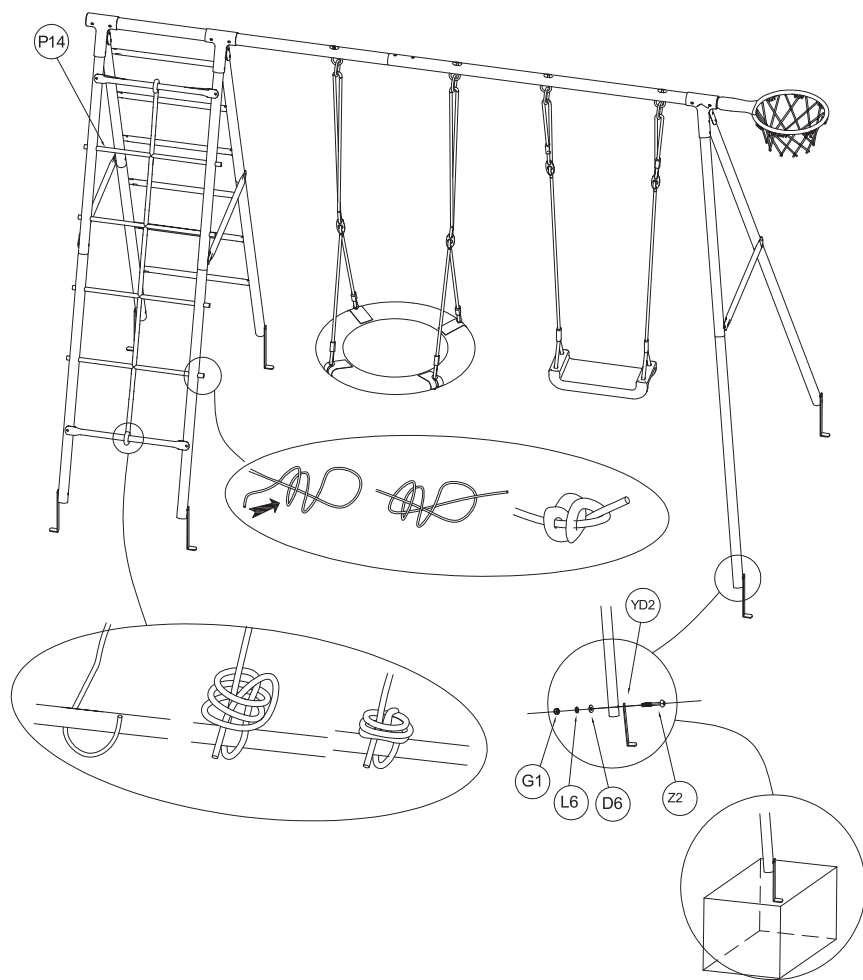
3

(P7) x8 (P13) x2 (G1) x16 (Z2) x16 (D3) x4
 (P11) x4 (C40) x1 (L6) x16 (G2) x4
 (P12) x1 (S5) x16 (D6) x32 (D8) x4



4

(G1) x6 (Z2) x6
 (L6) x6 (P14) x1
 (D6) x6 (YD2) x6



5

