

COSTWAY®

USER'S MANUAL

OIL HEATER

EP24076

THIS INSTRUCTION BOOKLET CONTAINS **IMPORTANT** SAFETY INFORMATION. PLEASE READ AND KEEP FOR FUTURE REFERENCE.

Please give us a chance to make it right and do better!

Contact our friendly customer service department for help first.

Replacements for missing or damaged parts will be shipped ASAP!

Follow Costway

Visit us: www.costway.com



Contact Us!

Do NOT return this item.

Contact our friendly customer service department for help first.



Before You Start

- ⊙ Please read all instructions carefully.
- ⊙ Retain instructions for future reference.
- ⊙ Separate and count all parts and hardware.
- ⊙ Read through each step carefully and follow the proper order.
- ⊙ We recommend that, where possible, all items are assembled near to the area in which they will be placed in use, to avoid moving the product unnecessarily once assembled.
- ⊙ Always place the product on a flat, steady and stable surface.
- ⊙ Keep all small parts and packaging materials for this product away from babies and children as they potentially pose a serious choking hazard.

WARNING: PLEASE READ THIS INSTRUCTION MANUAL CAREFULLY BEFORE USE

When using an electrical appliance, basic safety precautions should always be observed, including the following:

1. This appliance is not intended for use by persons (including children) with reduced physical, sensory or mental capabilities, or lack of experience and knowledge, unless they have been given supervision or instruction concerning use of the appliance by a person responsible for their safety.
2. Children should be supervised to ensure that they do not play with the appliance.
3. Connect the appliance to single phase AC supply of the voltage specified on the rating plate.
4. In order to avoid overheating, do not cover the heater.
5. Never leave the heater unattended while it is in use. Always turn the product to the OFF position and unplug it from the electrical outlet when not in use.
6. Extreme caution is necessary when any heater is used by or near children, reduced physical, sensory or mental capabilities or elderly person and whenever the heater is left operating and unattended.
7. The heater must not be located immediately below an electrical socket-outlet.
8. Do not run cord under carpeting and do not cover cord with throw rugs, runners or the like. Arrange cord away from traffic area and where it will not be tripped over.
9. Do not operate the heater with a damaged cord or plug, or after the heater malfunctions, has been dropped, or damaged in any manner.
10. If the supply cord is damaged, it must be replaced by the manufacturer or its service agent or a similarly qualified person to avoid a hazard.
11. Avoid the use of an extension cord as this may overheat and cause a risk of fire.
12. Use the heater in a well-ventilated area. Do not insert or allow objects to enter any ventilation or exhaust opening. To prevent a possible fire, do not block air intakes or exhaust openings in any manner. Do not use on soft surfaces, like a bed, where openings may become blocked. Use the heater on flat, dry surfaces only.
13. Do not place this heater near flammable materials, surfaces or substances, as there may be a risk of fire. Keep the above flammable materials, surfaces or substances at least 1m from the front of the product and keep them away from the sides and rear.
14. Do not use the heater in any areas where petrol, paint or other flammable liquids are stored e.g. Garages or workshops as a hot, arcing or sparking parts inside the heater.
15. Don't use this heater in the immediate surroundings of a bath, a shower or a swimming pool. Never locate the heater where it may fall into bathtub or other water container.
16. This heater is hot when in use. To avoid burns and personal injury, do not let bare skin touch hot surfaces. If provided, use handles when moving the product.
17. Be sure that no other appliances are in use on the same electrical circuit as your product as an overload can occur.
18. This heater is filled with a precise quantity of special oil.
19. Repair requiring opening of the oil container are only to be made by the manufacturer or its service agent who should be contacted if there is an oil leakage.
20. Regulations concerning the disposal of oil when scrapping the appliance have to be followed.
21. The heater should not be used in a room, of which the floor area is less than 5 M².
22. The cord shouldn't be placed nearby the hot surface of the appliance.
23. Indoor household use only
24. NOTE: It is normal when the heaters are turned on for the first time or when they are turned on after having not been used for a long period of time the heaters may have noise inside. This will disappear when the heater has been on a short while.

EP24076
YL-A01LED-7

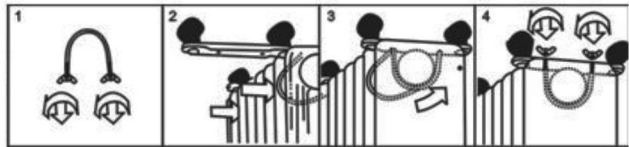


1. Carry handle	4. Power cord housing
2. Display	5. Radiant fins
3. Control panel	6. Rolling casters

SPECIFICATION
Voltage: 120V / 60Hz
Wattage: 1500W

ASSEMBLY INSTRUCTIONS

The heater is packaged with the feet unattached. You must attach them before operating the heater.
WARNING: Do not operate without feet attached. Do operate the heater only in upright position (feet on the bottom, controls on the top), any other position could create a hazardous situation.



1. Place the radiator body upside-down on a scratch-free location, make sure it is stable and will not fall.
2. Screw off the wing nuts from the U-shaped bolt provided, attach the U-shaped bolt to the U-facing flange between first and second fins (near the front cover).
3. To attach the castor mounting plate to the radiator body, you should insert the threaded ends of the U bolt in the holes on the castor mounting plate.
4. Screw the wing nuts back to the U bolt and fasten the wing nut properly.
Note: do not over tighten, which may cause the damage of radiator flange.
5. Screw off spherical nut from the castor, align the shaft to the hole of the castor mounting plate, insert in, and screw on the spherical nut.
6. Repeat 2, 3, 4 and 5 on the rear of radiator for mounting of the rear castors.
Note: the rear castors must be mounted between the end two fins.

INSTRUCTIONS FOR USE

Placement of the heater

1. Turn the heater upright. Ensure legs are correctly installed and level.
2. Place heater on a flat and stable surface. Setting the heater on an incline or decline may cause damage to the unit and create a hazardous situation.
3. Proceed to OPERATING INSTRUCTIONS.

Pre-operation instructions

1. Carefully remove your heater from its shipping box. (The shipping box can be reused for off-season storage).
2. Place your heater on a firm, level surface.
3. Completely uncoil the power cord, and connect your heater directly into a 120 Volt, grounded AC electrical outlet.

Note: The power cord has a polarized plug (with one blade wider than the other) that will only fit in a polarized outlet one way. If it does not insert easily try reversing the plug. If it still does not fit contact your electrician to replace your outlet. DO NOT defeat the safety purpose of the polarized plug.


CAUTION: TO PREVENT ELECTRIC SHOCK MATCH WIDE BLADE OF PLUG TO WIDE SLOT, FULLY INSERT.

The Control panel Symbols

 Low Power Level (600W)

 Medium Power Level (900W)


 High Power Level (1500W)

 Heating Mode

 Timer Mode

 Power on

Controls on product

 : press this button after plug in to power on the heater and start operation, or press it repeatedly to stop operation and set the heater into standby mode.

Mode: use this button to set the power level.

Timer: use this button to set the timer.



[+] and [-]: use these buttons when setting the desired temperature, or for setting the timer.

Controls On Remote Control

POWER: press this button after plug in to power on the heater and start operation, or press it repeatedly to stop operation and set the heater into standby mode.

MODE: use this button to set the power level.

TIMER: use this button to set the timer.

[^] and [v]: use these buttons when setting the desired temperature, or for setting the timer.



Setting The Temperature

The heater has a thermostat which enables you to set the temperature from 59° F to 95° F. Once a temperature has been set, the heater will remain on until the room temperature has reached the temperature on the digital display. The thermostat will then cycle on and off to maintain the set room temperature.

- Power on the heater, the display will show 88 and keep flashing. Press Power button to set the desired power level. The desired temperature 75° F and power level will be shown and flash on the screen.
- Use the [+ or ^] and [- or v] buttons to set the desired temperature, from 56° F to 95° F.
- While the heater is warming up the room, the heat level symbol will keep flashing on the display until the set temperature has been reached. The symbol will stop flashing then. The heater comes on again when the room temperature drops below the desired temperature.
- Use the [+ or ^] and [- or v] buttons to change the desired room temperature at any time.

Setting The Timer

When the heater is powered on. You can set the timer to switch off the appliance automatically after a certain period of time (1 to 12 hours from the time the function is set).

1. Power on the heater, the display will show 88 and keep flashing. Press Timer button to set the desired power off time. The display will show 00 and start flashing on the screen.
2. Use the [^] and [v] buttons to set the heater operation time (between 1 and 12 hours). The function will activate once the timer icon stops flashing.
3. The heater will cycle on and off as per the set temperature setting and discontinue operation when the set time has run out.

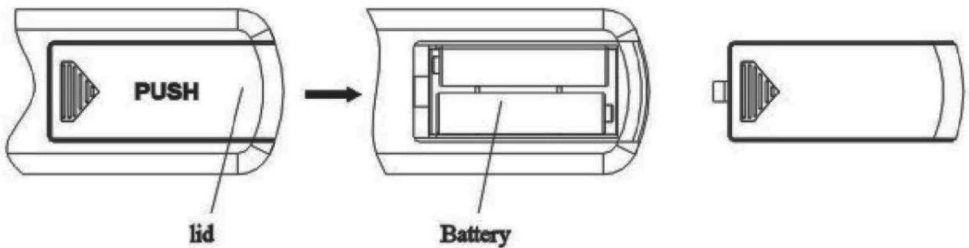
Example: It is now 4pm. The heater is on and you want it to shut off at 11pm automatically. Set the timer-off function to 7 hours: the heater will cycle on and off to maintain the set temperature. It will stop operating at 11pm and go into standby mode. It is recommended to unplug the heater from the wall outlet when the heater is not in use.

Clean And Maintenance

1. Press Power Button to turn off the heater.
2. Disconnect the power cord from the electrical outlet, and wait until the unit cool down.

Off-season Storage Instructions

1. Secure the power cord, and place your heater in its original shipping container, or a similar container.
2. Store the container in a cool, dry location.
3. Take out the remote batteries(to prevent corrosion) as shown below. Store the remote in a safe place.



Safety Features

Your heater is equipped with a Tip-Over Safety Switch. When your heater tips over, it will turn off automatically.

Your heater is equipped with an Overheat Protection System. When the threshold temperature has been reached, your heater will turn off automatically.

To reset your heater when the overheat Protection System has been activated, perform the following:

1. Turn the Power Control Switch to the 'OFF' position, and turn the Temperature Control Switch to the lowest setting.
2. Disconnect the power cord from the electrical outlet.
3. Allow your heater to cool down for approximately ten minutes.
4. Connect the power cord to the electrical outlet.
5. Turn the Power Control Switch to the 'HIGH' position, and turn the Temperature Control Switch to the highest setting.
6. If your heater does not operate normally, turn the Power Control Switch to the 'OFF' position, disconnect the power cord from the electrical outlet, and consult an authorized repair technician.

MAINTENANCE

1. Always remove the plug from the socket-outlet and allow the radiator to cool down before cleaning the heater.
2. Wipe radiator with a soft damp (not wet) cloth.

WARNING:

Do not immerse the heater in water.

Do not use any cleaning chemicals such as detergents and abrasives.

Do not allow the interior to get wet as this could create a hazard.

3. To store away the heater, wind the cable round bobbin and store the heater in a clean dry place.

4. In case of malfunction or doubt, do not try to repair the radiator yourself, it may result in a fire hazard or electric shock.

CONFORMITY WITH DIRECTIVES

This product is CE marked to denote conformity with Directives 2006/95/EC (Low Voltage) and the EMC directive (2004/108/EC), as amended.

Correct Disposal of this product



This marking indicates that this product should not be disposed with other household wastes throughout the EU. To prevent possible harm to the environment or human health from uncontrolled waste disposal, recycle it responsibly to promote the sustainable reuse of material resources. To return your used device, please use the return and collection systems or contact the retailer where the product was purchased. They can take this product for environmentally safe recycling.

Welcome to visit our website and purchase our quality products!

Your suggestions and comments for COSTWAY are really important to us!

We sincerely solicit you to go back to our shop and leave a good rating in just a simple click. It would be quite encouraging if you could kindly do so like below:

★★★★★ Great products so far

February 24, 2019

Great products so far. Fast delivery, easy setup, and working without any issues.

With your inspiring rating, COSTWAY will be more consistent to offer you
EASY SHOPPING EXPERIENCE, GOOD PRODUCTS and EFFICIENT SERVICE!

US office: Fontana, California

UK office: Ipswich



- * Reward Points
- * Exclusive Customer Service
- * Personalized Recommendations
- * Permanent Shopping Cart
- * Order History

5 Star Rating



We would like to extend our heartfelt thanks to
all of our customers for taking time to assemble
this product and giving us valuable feedbacks.

THANK
you
☺

