



COSTWAY®

**Please give us a chance to make it right and do better !**

Contact our friendly customer service department for help first.  
Replacements for missing or damaged parts will be shipped ASAP !

US office: Fontana    UK office: Ipswich    AU office: Truganina



## Contact Us !

**Do NOT return this item.**

Contact our friendly customer service department for help first.



US: cs.us@costway.com  
UK: cs.uk@costway.com  
AU: cs.au@costway.com

## USER'S MANUAL

### Baby High Chair AD10016

THIS INSTRUCTION BOOKLET CONTAINS **IMPORTANT** SAFETY INFORMATION. PLEASE READ AND KEEP FOR FUTURE REFERENCE.



## Before You Start

Please read all instructions carefully and keep it for future reference.

### Warnings:

Attention! Use it with protective equipment.

Attention! Not use it in the traffic.

Attention! The product is not suitable for the children under 3 years.

### General Warnings:

- ⚠ The product must be installed and used under the supervision of an adult.
- ⚠ Read through each step carefully and follow the proper order.
- ⚠ Remove all packaging, separate and count all parts and hardware.
- ⚠ Please ensure that all parts are correctly installed, incorrect installation can lead to a danger.
- ⚠ We recommend that, where possible, all items are assembled near the area in which they will be placed in use, to avoid moving the product unnecessarily once assembled.
- ⚠ Ensure a secure surface during installation, and place the product always on a flat, steady and stable surface.
- ⚠ Please use this product with caution. The use of this product requires superb skills to avoid accidents to the user or others due to a fall or collision.
- ⚠ Please wear suitable protective equipment during use, e.g. protective helmet, gloves, knee pads, elbow pads etc.

- High chair is intended for children able to sit up unaided and suitable for kids from 6 to 36 months, max weight capacity is 33 lbs (15 kg).
- Adult assembly required.
- READ all instructions before assembly and use of high chair.
- KEEP instructions for future use.
- Discontinue use if there are damaged, broken or missing parts.



### CAUTION:

Keep small parts away from children during assembly.

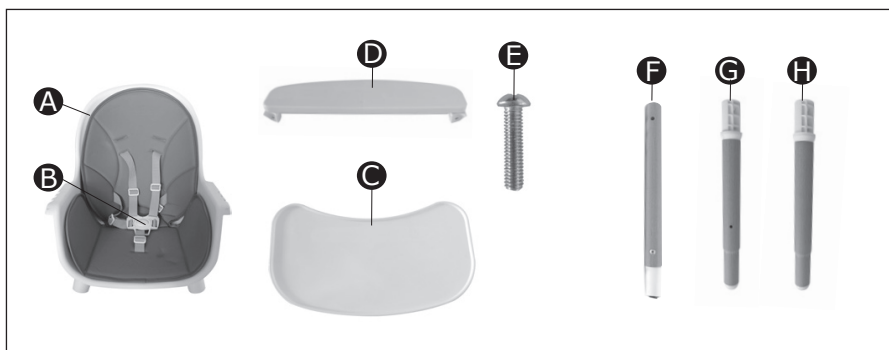


### WARNING:

**FALL HAZARD:** Children have suffered severe head injuries including skull fractures when falling from high chairs. Falls can happen suddenly if child is not restrained properly.

- ALWAYS use restraints, and adjust to fit snugly.
- Tray is not designed to hold child in chair.
- Stay near and watch child during use.
- The child should be secured in the high chair at all times by the restraining system. The tray is not designed to hold the child in the chair. It is recommended that the high chair be used only by children capable of sitting upright unassisted.
- DO NOT lift or move high chair with child in it.
- NEVER use near stairs.
- When assembling high chair ENSURE to use BOTH upper and lower leg components.
- ALWAYS ensure that all leg assembly pins are clicked into place.

## • Parts List



- |                         |                                 |
|-------------------------|---------------------------------|
| <b>A</b> Seat           | <b>E</b> Screw for footrest (2) |
| <b>B</b> Restraint belt | <b>F</b> Lower legs (4)         |
| <b>C</b> Tray           | <b>G</b> Upper front legs (2)   |
| <b>D</b> Footrest       | <b>H</b> Upper rear legs (2)    |

### Tools needed:

Phillips head screwdriver (not included)

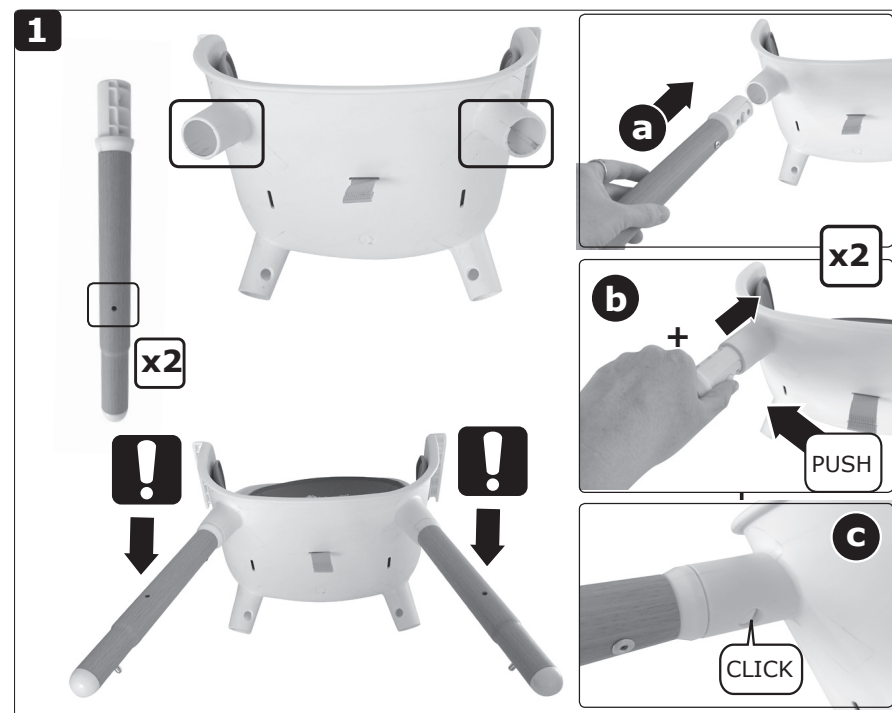
## • Keep These Instructions For Future Use

**Read all instructions before assembly and use of high chair.**

- Remove all contents from packaging and discard box and/or poly bags.
- Lay out and identify all parts.

**Before Assembly:** Wipe down trays with a soft cloth and warm soapy water.

## • To Assemble

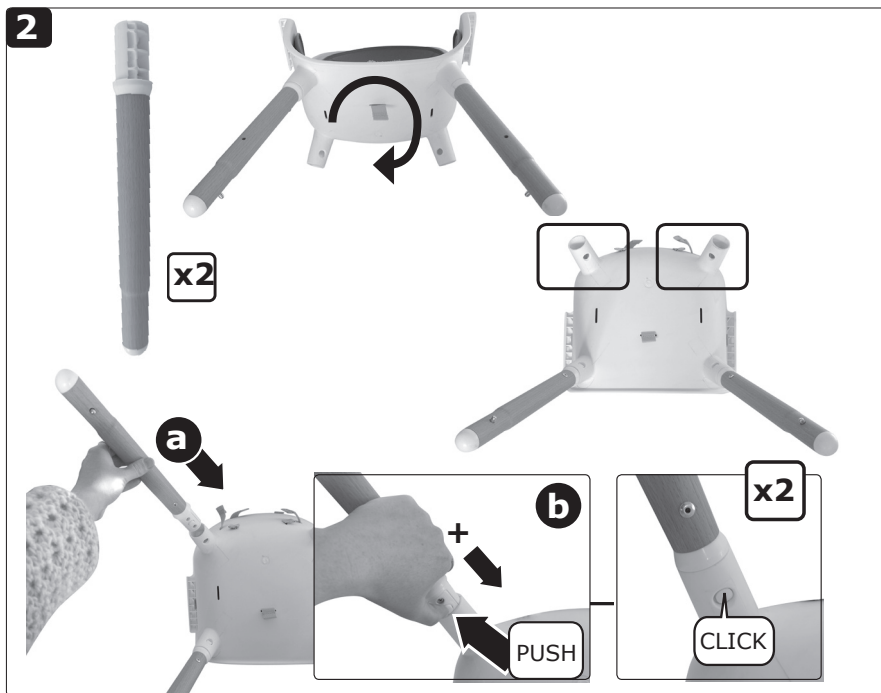


### Attach Upper Front Legs **A****G** :

Locate the two upper legs with the holes in them.

- !** Be sure to install these into front of seat with the holes facing the front of seat. Push each leg into front leg opening until it clicks into place.

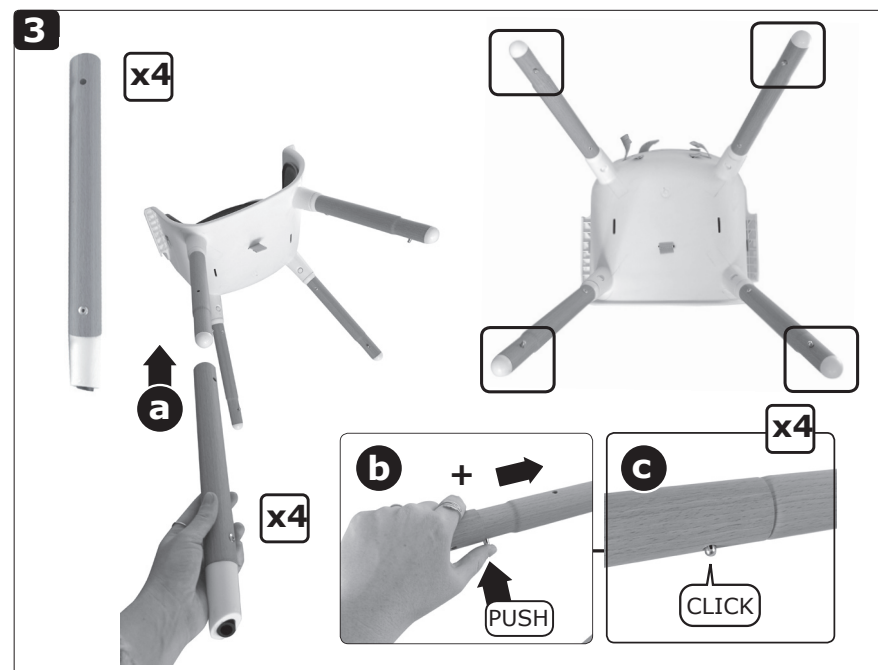
**NOTE:** Pull on each leg to ensure all legs are assembled securely.



### Attach Upper Rear Legs (A-H):

Flip seat around. Locate the two upper rear legs. Push each leg into rear leg opening until it clicks into place.

**NOTE:** Pull on each leg to ensure all legs are assembled securely.

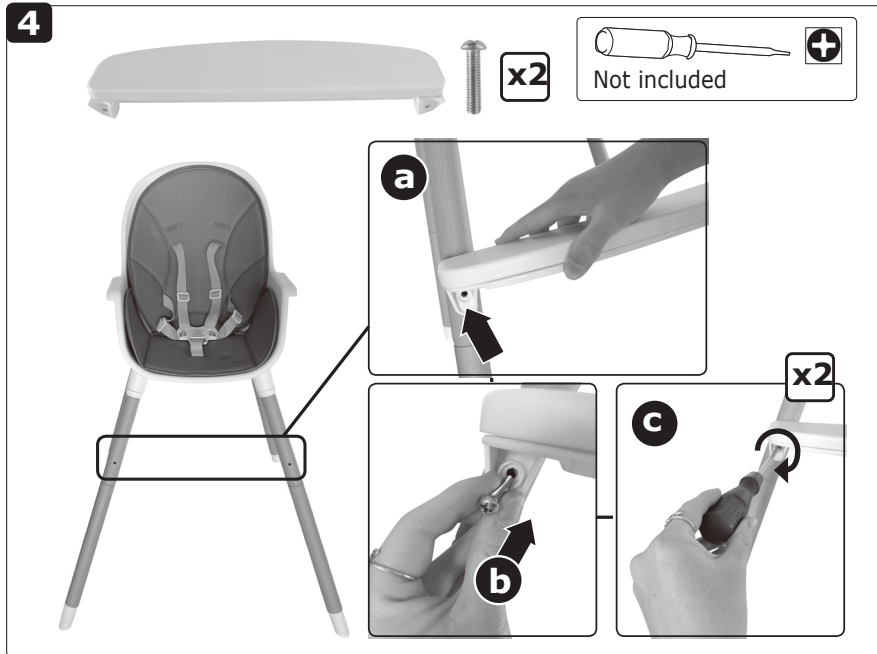


### Attach Lower Legs (A-F):

Locate holes on lower legs. Align each hole on lower leg to pin on upper leg. Press pin to click into place.

**NOTE:** Pull on each leg to ensure all legs are assembled securely.





### Attach Footrest

Align footrest to holes in front legs. Fasten footrest to front legs using 2 screws. Ensure footrest is tightly secured.

- **To Operate**



### Attaching Tray ©:

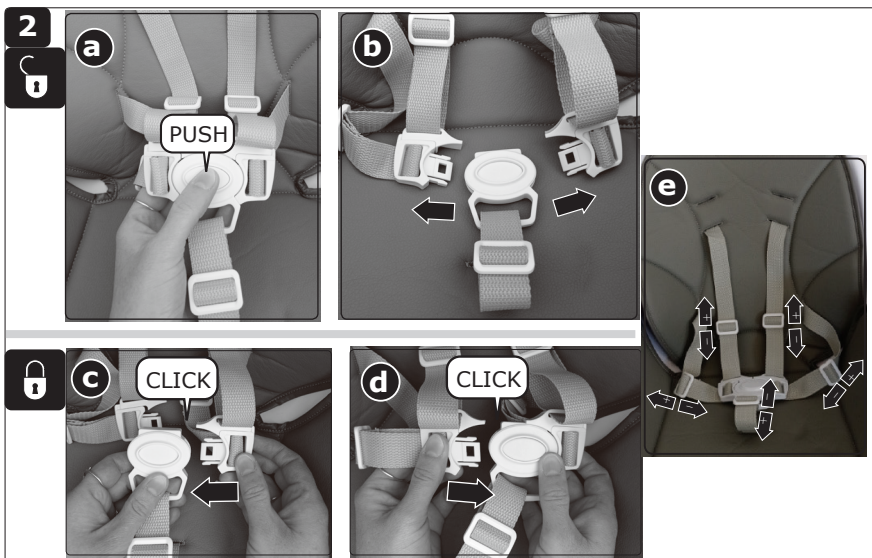
Squeeze buttons underneath both sides of tray and slide tray onto high chair.

### Adjust tray:

Squeeze buttons on both sides and slide tray forward or backward.

### Remove tray:

Squeeze buttons on both sides and pull outward.



### Using Restraint System B:

Place child in the seat with the crotch strap between the child's legs and fasten both buckles. Adjust straps (at five buckles) to tighten snugly .



### WARNING:

ALWAYS secure child in the restraint belt. Adjust to fit snugly.



### Adjust Restraint Length:

The shoulder straps have two height positions for your growing child. Push each anchor through the seat back and into the desired slot. Be sure the anchor lays flat against the seat back.

## • Care and Maintenance

**High chair and trays:** Wipe with soft, damp cloth and warm, soapy water and allow to drip dry.

**Seat pad:** Surface wash and drip dry only. Do not place in washing machine or dryer.

**Restraint system:** Restraint and crotch straps should be surface washed and drip dried only. Do not place in washing machine or dryer.