



With your inspiring rating, COSTWAY will be more consistent to offer you **EASY SHOPPING EXPERIENCE, GOOD PRODUCTS** and **EFFICIENT SERVICE**!

Mit Ihrer inspirierenden Bewertung wird COSTWAY konsistenter sein, um Ihnen **EIN SCHÖNES EINKAUFSERLEBNIS, GUTE PRODUKTE** und **EFFIZIENTEN SERVICE** zu bieten!

Avec votre évaluation inspirante, COSTWAY continuera à fournir une **EXPÉRIENCE D'ACHAT PRATIQUE, des PRODUITS DE QUALITÉ** et un **SERVICE EFFICACE** !

Con su calificación inspiradora, COSTWAY será más consistente para ofrecerle **EXPERIENCIA DE COMPRA FÁCIL, BUENOS PRODUCTOS** y **SERVICIO EFICIENTE**.

Con la tua valutazione incoraggiante, COSTWAY sarà più coerente per offrirti **ESPERIENZA DI ACQUISTO FACILE, BUONI PRODOTTI** e **SERVIZIO EFFICIENTE**!

Dzięki twojej opinii COSTWAY będzie mógł oferować jeszcze **WYGODNIEJSZE ZAKUPY, LEPSZE PRODUKTY** i **SPRAWNIEJSZĄ OBSŁUGĘ KLIENTA**.

US office: Fontana

UK office: Ipswich

DE office: FDS GmbH, Neuer Höltigbaum 36, 22143 Hamburg, Deutschland

FR office : 26 RUE DU VERTUQUET, 59960 NEUVILLE EN FERRAIN, FRANCE



USER'S MANUAL

Portable Air-conditioner
EP24581US-WH

1. Safety Awareness

1. The appliance is for indoor use only.
2. Do not use the unit on a socket under repairs or not installed properly
3. Do not use the unit, follow these precautions:
 - A: Near to source of fire.
 - B: An area where oil is likely to splash.
 - C: An area exposed to direct sunlight.
 - D: An area where water is likely to splash.
 - E: Close to bathtub, laundry room, shower room or swimming pool.
4. Never insert your fingers, rods into the air outlet. Take special care to warn children of these dangers.
5. Keep the unit upward while transport and storage to ensure that the compressor is located properly.
6. Before cleaning the air-conditioner, always turn off or disconnect the power supply.
7. When moving the air-conditioner, always turn off and disconnect the power supply, and move it slowly.
8. To avoid the possibility of fire disaster, the air-conditioner shall not be covered.
9. All the air-conditioner sockets must comply with the local electric safety requirements. If necessary, please check it for the requirements.
10. Children should be supervised to ensure that they do not play with the appliance.
11. If the supply cord is damaged, it must be replaced by the manufacturer, its service agent or similarly qualified persons in order to avoid a hazard.
12. This appliance can be used by children aged from 8 years and above and persons with reduced physical, sensory or mental capabilities or lack of experience and knowledge if they have been given supervision or instruction concerning use of the appliance in a safe way and understand the hazards involved. Children shall not play with the appliance. Cleaning and user maintenance shall not be made by children without supervision.



13. Recycling

This marking indicates that this product should not be disposed with other household wastes throughout the EU. To prevent possible harm to the environment or human health from uncontrolled waste disposal, recycle it responsibly to promote the sustainable reuse of material resources. To return your used device, please use the return and collection systems or contact the retailer where the product was purchased. They can take this product for environmental safe recycling.

14. Contact authorized service technician for repair or maintenance of this unit.
15. Do not pull , deform . or modify the power supply cord , or immerse it in water . Pulling or misuse of the power supply cord can result in damage to the unit and cause electric shock.
16. Compliance with national gas regulations shall be observed.
17. Keep ventilation openings clear of obstruction.
18. Any person who is involved with working on or breaking into a refrigerant circuit should hold a current valid certificate from an industry-accredited assessment authority, which authorizes their competence to handle refrigerants safely in accordance with an industry recognized assessment specification.
19. Servicing shall only be performed as recommended by the equipment manufacturer . Maintenance and repair requiring the assistance of other skilled personnel shall be carried out under the supervision of the person competent in the use of flammable refrigerants.
20. Do not operate or stop the unit by inserting or pulling out Die power plug, it may cause electric shock or fire due to heat generation .
21. Unplug the unit if strange sounds, smell, or smoke comes from it.

Notes:

- If any parts are damaged, please contact the dealer or a designated repair shop;
- In case of any damage, please turn off the air switch, disconnect the power supply, and contact the dealer or a designated repair shop;
- In any case, the power cord shall be firmly grounded.
- To avoid the possibility of danger, if power cord is damaged, please turn off the air switch and disconnect the power supply. It must be replaced from the dealer or a designated repair shop.

2. Name of Parts

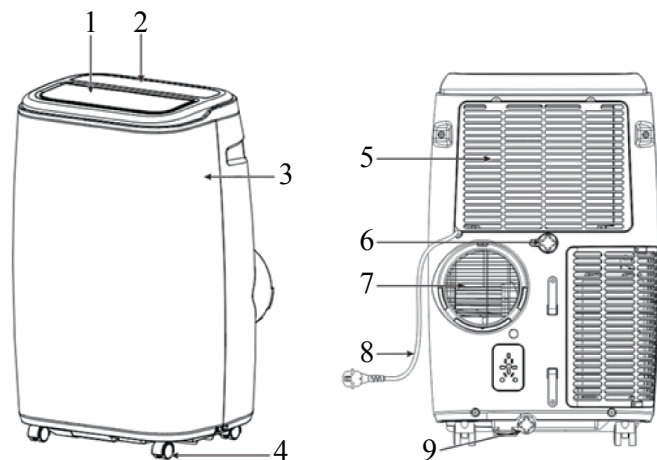


Fig.1

1	Louver	6	Drainage outlet
2	Control panel	7	Air outlet
3	Front panel	8	Power cord
4	Castor	9	Drainage outlet
5	Air inlet		

3. Accessories

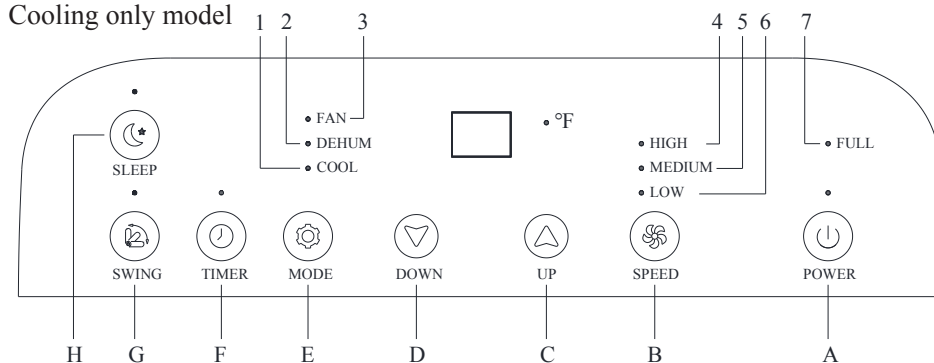
Part	Description	Quantity
	Exhaust hose	1
	Housing adaptor	1
	Window Connector	1
	Remote Controller	1
	Window Kit	1 (optional)
	Window Connector	1(optional)

Part	Description	Quantity
	Window Kit	1 (optional)
	Air outlet	1 (optional)
	Dowel	2 (optional)
	Caulking kit	1 (optional)
	Water pipe	1 (optional)
	Batteries	2 (optional)

After unpacking, please check whether the above-mentioned accessories are included, and check their purposes in the installation introduction in this manual.

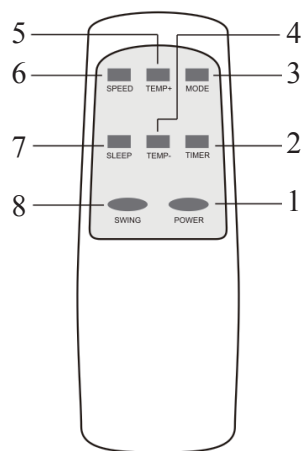
4. Appearance and Function of Control Panel

Cooling only model



A	Power on/off	1	Cooling
B	Fan speed	2	Dehumidifying
C	Temperature up	3	Fan
D	Temperature down	4	High fan speed
E	Operation mode	5	Medium fan speed
F	Timer on/off	6	Low fan speed
G	Swing on/off	7	Water full
H	Sleep mode		

5. Appearance and Function of Remote Control



Remote Control

1	POWER	Power on/off
2	TIMER	Timer on/off
3	MODE	Operation MODE
4	TEMP-	Temperature down
5	TEMP+	Temperature up
6	SPEED	Fan speed
7	SLEEP	Sleep mode
8	SWING	Swing on/off

Notes:

- Do not drop the remote controller.
- Do not place the remote controller in a location exposed to direct sunlight.

6. Operation Introduction

Before starting operations in this section:

- 1) Find a place where there is power supply nearby.
- 2) As shown in Fig.5 and Fig.5a, install the exhaust hose, and adjust the window position well.

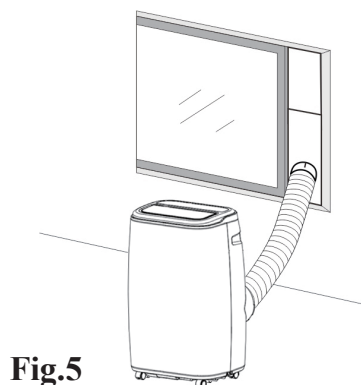


Fig.5

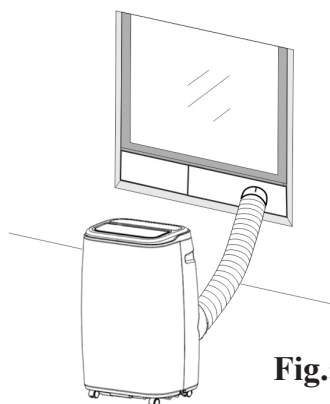


Fig.5a

- 3) As shown in Fig. 6, Connect drain hose well (only for using heating model);
- 4) Insert the power cord into an grounded AC 110V/60Hz socket;
- 5) Press the POWER button to turn on the air-conditioner.

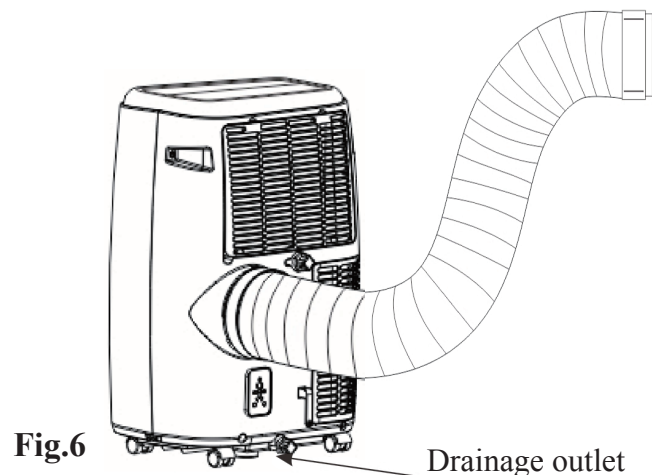


Fig.6

6.1. Before using

Notice:

- Operation temperature range:

	Maximum cooling	Minimum cooling
DB/WB(°F)	95/75	64/54

Check up whether the exhaust hose has been mounted properly.

Cautions for cooling and dehumidifying operations:

- When using functions on cooling and dehumidifying, keep an interval of at least 3 minutes between each ON/OFF.
- Power supply meets the requirements.
- The socket is for AC use.
- Do not share one socket with other appliances.
- Power supply is AC110V/60Hz

6.2 Cooling operation

- Press the “MODE” button till the “Cool” icon appears.
- Press the “ DOWN ”or“ UP ”button to select a desired room temperature. (61°F-88°F)
- Press the “ SPEED ” button to select wind speed.

6.3 Dehumidifying operation

Press the “MODE” button till the “Dehumidify” icon appears .

- Automatically set the selected temperature to current room temperature minus 2°F. (61°F-88°F)
- Automatically set the fan motor to LOW wind speed.

6.4 Fan operation

- Press the “MODE” button till the “Fan” icon appears.
- Press the “ SPEED ” button to select wind speed.

6.5 Timer operation

Timer ON setting:

- When the air-conditioner is OFF, press the “TIMER” button and select a desired ON time through the temperature and time setting buttons.
- “Preset ON Time” is displayed on the operation panel.
- ON time can be regulated at any time in 0-24 hours.

Timer OFF setting

- When the air-conditioner ON, press “TIMER” button and select a desired OFF time through the temperature and time setting buttons.
- “Preset OFF Time” is displayed on the operation panel.
- OFF time can be regulated at any time in 0-24 hours.

6.7 Auto SWING

After machine turns on, press this key, the louver will swing continuously left and right; by pressing this button again the movement will stop and the louver remain in that position.

6.8 SLEEP mode

- While in cooling mode, press the SLEEP key to set the temperature. It increases 1°F after an hour and at most increases 2°F after 2 hours.
- Press the SLEEP key again can cancel the setting.

6.9 Water drainage

Water Full Alarm

The inner water tray inside the air-conditioner has one water level safety switch, it controls water level. When water level reaches an anticipated height, the water full indicator lamp lights up. (If water pump is damaged, when the water is full, please remove the rubber stopper at the bottom of unit, and all water will drain outside.)

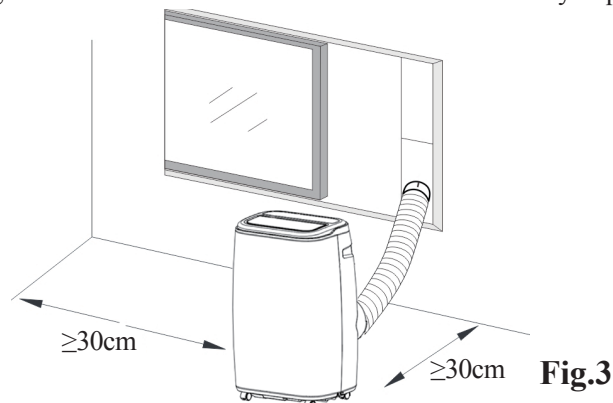
Continuous Drainage

- When you plan to leave this unit unused for a long time, please remove the rubber stopper from the drainage hole at the bottom of unit, and connect a drain hose to the lower fixing clip. All the water in the water tank will drain outside.
 - If water pump is damaged, continuous drainage can be used, and under this condition, the water pump is not activated. The unit can also work well.
- If water pump is damaged, intermittent drainage can also be used. Under this condition, when the water full indicator lamp lights up, please connect a drain hose to the lower fixing clip, then all the water in the water tray will be drained outside. The unit can also work well.

7. Installation Explanations

7.1 Installation Explanations:

- A removal air-conditioner shall be installed in the flat and empty place all around. Don't block the air outlet, and the required distance around should be at least 30cm/12". (See Fig.8)
- Should not be installed in wet location, such as the laundry room.
- Socket wiring should be in accordance with the local electric safety requirements.



7.2 Introduction to Exhaust Hose Installation

Temporary installation

1. Twist the housing adaptor and the window Connector to the ends of the exhaust hose.
2. Insert the fixing clip of the housing adaptor into the openings at back of the air conditioner.
3. Put the other end of the exhaust hose to the near windowsill(see Fig.9).

Window Kit Installation

The installation manner of window slider kit is mostly in "horizontal" or "vertical". As shown Fig.10 and Fig.10a, check the min. and max. size of the window before the installation.

1. Install the window kit on the window (Fig.10, Fig.10a);
2. Adjust the length of the window slider kit according to the window width or height, and fix it with the dowel;
3. Insert the window connector of the hose to the hole of the window kit(Fig.11).

Fig.9

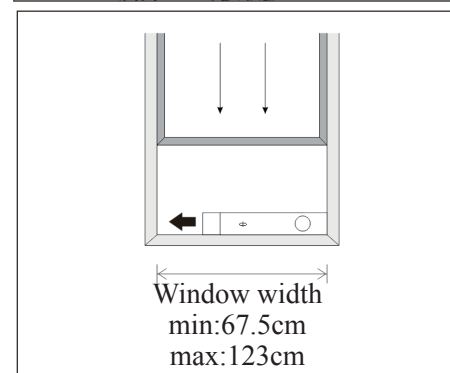
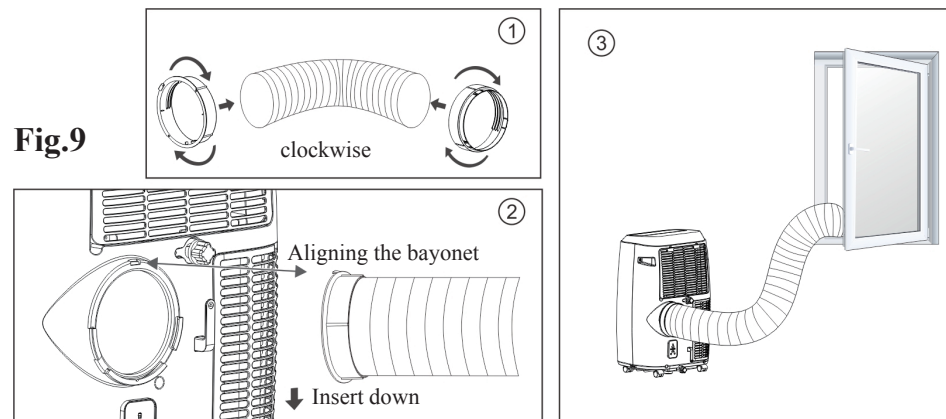


Fig.10

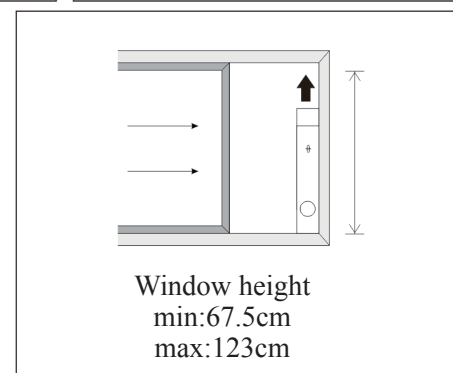
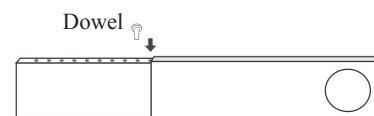


Fig.10a

②



③

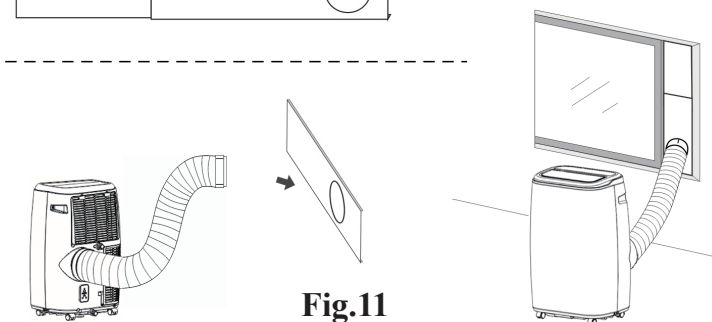
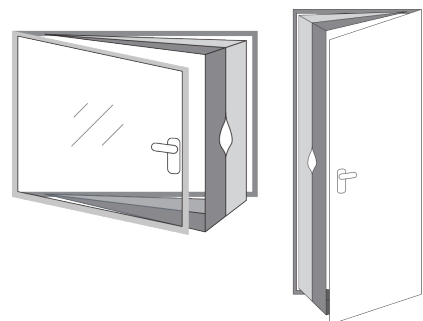


Fig.11

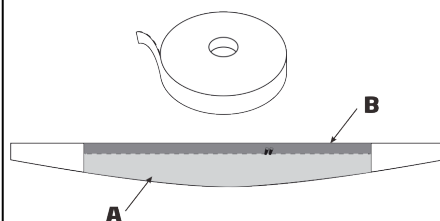
Universal caulking kit accessory for mobile air conditioner

Suitable for windows and doors

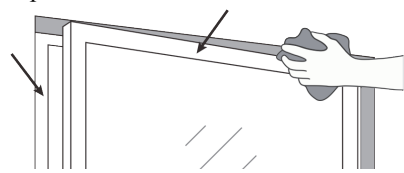


Included in this kit:

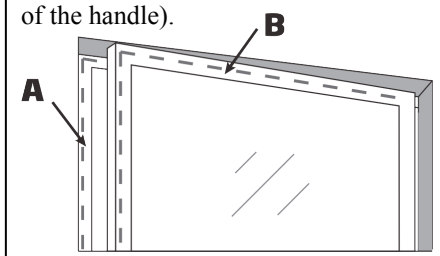
- 1 piece of fabric
- 1 roll of **adhesive gripping tape**



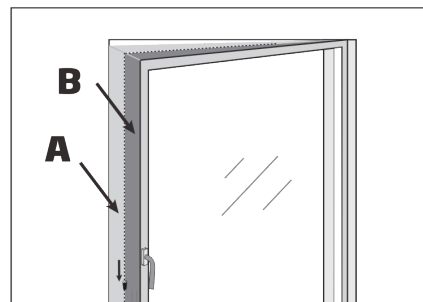
1. Open the window and clean the doors and frame before gluing the adhesive tape.



2. Cut large strips of adhesive gripping tape to the dimensions of the window. Glue them to the frame of your window and then do the same on the inner surface of the window flap (on the side of the handle).



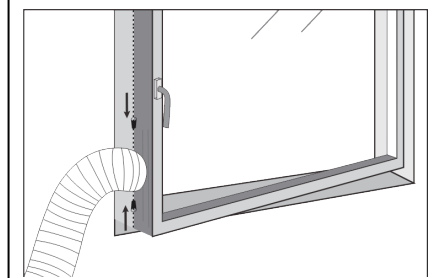
1. Glue the widest side (A) of the large white fabric piece to the window frame and then glue the narrower side (B) to the window leaf (handle side) from the center, then up and finally down.



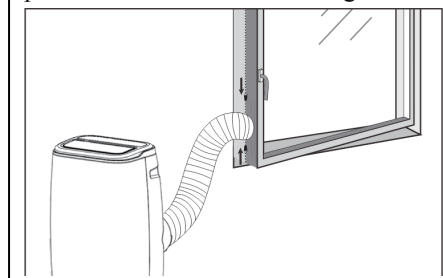
4. Close the window and make sure the large fabric piece is not stuck in the closing seams and the window closes always correctly, even with the tapes sticky adhesive tape.

5. Open the window gently and open the zipper of the fabric piece (at level of the bottom or middle of the window) then insert the exhaust duct into the opening.

Readjust the zipper so that the exhaust duct is attached so that there is no air exchange between the inside and the outside.



6. Your caulking kit is now installed, you can now turn on and enjoy the coolness of your mobile air conditioner! If you no longer want to use your mobile air conditioner and close your window, you can simply remove the sheath from the zipper and close your window, in verifying that the fabric piece is not stuck in the closing seals.



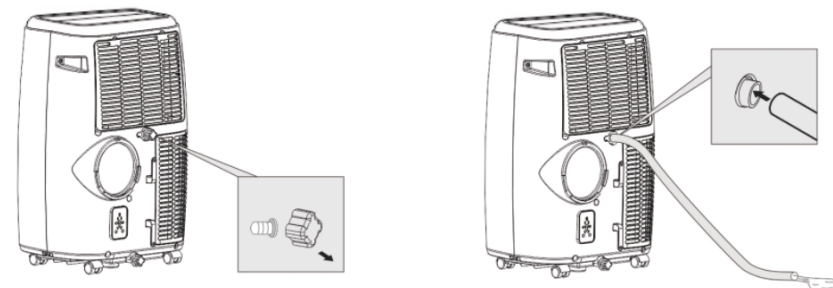
N.B. : If you have a window with French opening with two leaves: Block the first leaf with the handle and make the installation of the caulking kit on the second leaf (without the handle).

Before installation, check that the adhesive gripping tape do not damage your window.

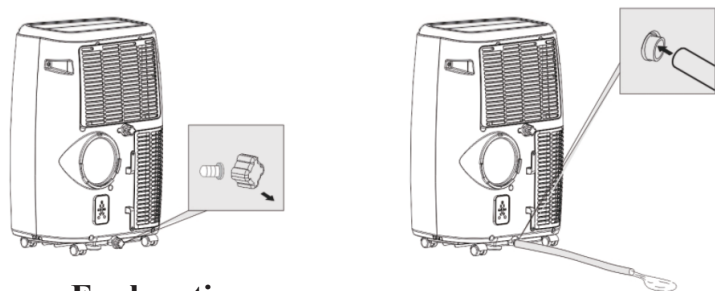
7.3 Water Full alarm

The inner water tray inside the air-conditioner has one water level safety switch, it controls water level. When water level reaches an anticipated height, the water full indicator lamp lights up. (If water pump is damaged, when the water is full, please remove the rubber stopper at the bottom of unit, and all water will be drained outside.)

(A)



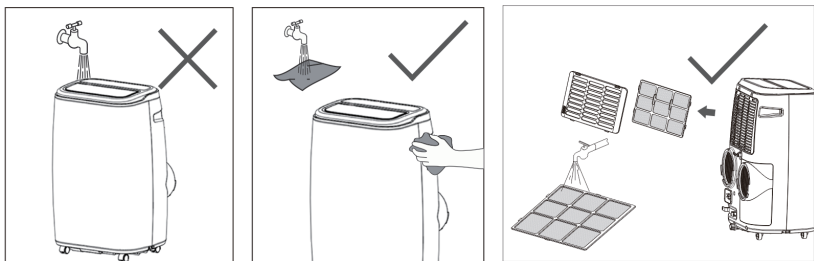
(B)



8. Maintenance Explanations

Declaration:

- 1) Before cleaning, be sure to disconnect the unit from any electric supply outlet;
- 2) Do not use gasoline or other chemicals to clean the unit;
- 3) Do not wash the unit directly;
- 4) If the conditioner is damaged, please contact the dealer or repair shop.



8.1 Air Filter

- If the air filter becomes clogged with dust/dirt, the air filter should be cleaned once every two weeks.

- Dismounting

Open the air inlet grille and take off air filter.

- Cleaning

Clean the air filter with neutral detergent in lukewarm (104°F) and dry it up in the shade.

- Mounting

Putting the air filter into the inlet grille, replace the components as they were.

8.2 Clean the Air-conditioner Surface

First clean the surface with a neutral detergent and wet cloth, and then wipe it with a dry cloth.

9. Troubleshooting

Troubles	Possible Causes	Suggested Remedies
1. Unit does not start when pressing on/off button	- Water full indicator lamp blinks, and water tank is full.	Dump the water out of the water tank.
	- Room temperature is lower than the setting temperature. (Cooling mode)	Reset the temperature
2. Not cool enough	- The doors or windows are not closed.	Make sure all the windows and doors are closed.
	- There are heat sources inside the room.	Remove the heat sources if possible
	- Exhaust air hose is not connected or blocked.	Connect or clean the exhaust air hose.
	- Temperature setting is too high.	Reset the temperature
3. Noisy	- Air inlet is blocked.	Clean the air inlet.
	- The ground is not level or not flat enough	Place the unit on a flat, level ground if possible
	- The sound comes from the flowing of the refrigerant inside the air conditioner	It is normal.
4. E0 Code	Room temperature sensor failed	Replace room temperature sensor (the unit can also work without replacement.)
5. E1 Code	Condenser temperature sensor failed	Replace condenser temperature sensor
6. E2 Code	Water tank full when cooling	Take off rubber stopper and empty the water.
6. E3 Code	Evaporator temperature sensor failed	Replace evaporator temperature sensor
7. E4 Code	Water tank full when heating	Please empty the water tank.

Note: The real products may look different.