



COSTWAY®

Please give us a chance to make it right and do better !

Contact our friendly customer service department for help first.
Replacements for missing or damaged parts will be shipped ASAP !

US office: Fontana **UK** office: Ipswich **AU** office: Truganina
DE office: Hamburg **FR** office: Saint Vigor d'Ymonville **PL** office: Gdańsk



Contact Us!

Do NOT return this item.

Contact our friendly customer service department for help first.



US:cs.us@costway.com
UK:cs.uk@costway.com
AU:cs.au@costway.com

USER'S MANUAL

Kids Ride-On Scooter BC10109

THIS INSTRUCTION BOOKLET CONTAINS **IMPORTANT** SAFETY INFORMATION. PLEASE READ AND KEEP FOR FUTURE REFERENCE.



Before You Start

- ⚠ Please read all instructions carefully.
- ⚠ Retain instructions for future reference.
- ⚠ Separate and count all parts and hardware.
- ⚠ Read through each step carefully and follow the proper order.
- ⚠ We recommend that, where possible, all items are assembled near to the area in which they will be placed in use, to avoid moving the product unnecessarily once assembled.
- ⚠ Always place the product on a flat, steady and stable surface.
- ⚠ Keep all small parts and packaging materials for this product away from babies and children as they potentially pose a serious choking hazard.

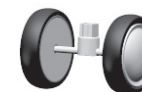
Parts List



Main body



Handlebar



Front wheel

Rear wheel
(with axle and
clamp spring)

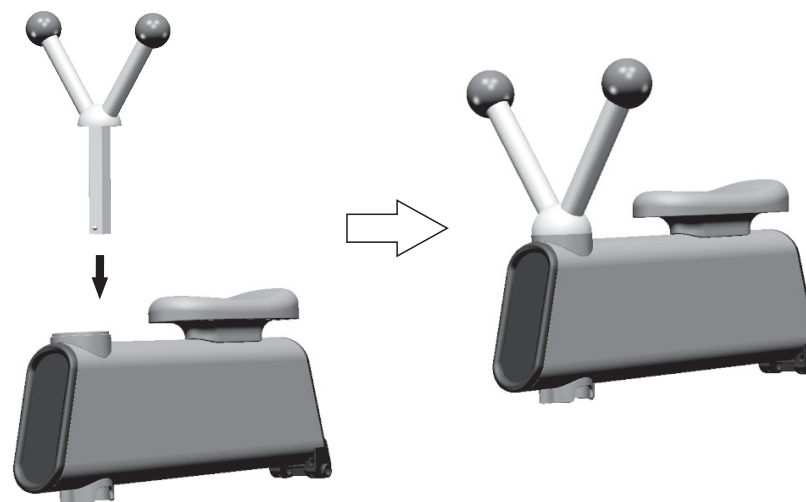
Rear wheel

Rear wheel
cover x2Clamp spring x2
(stuck on the
rear axle)

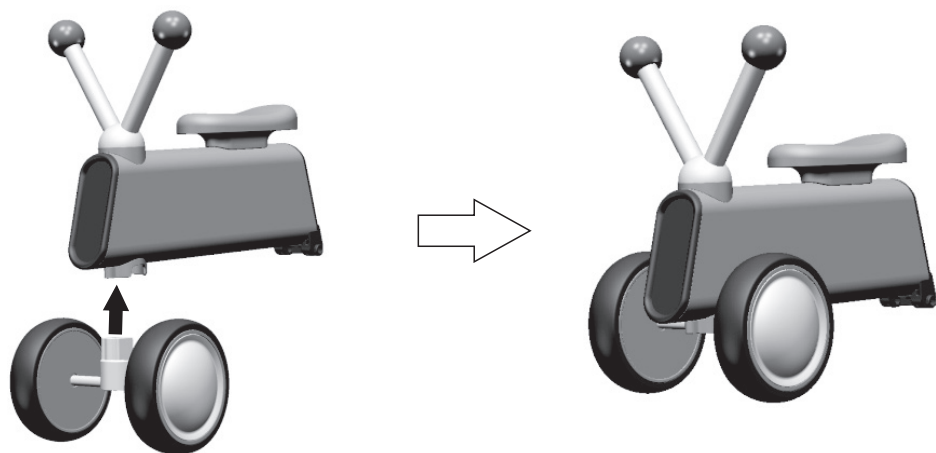
Manual

Assembly Steps

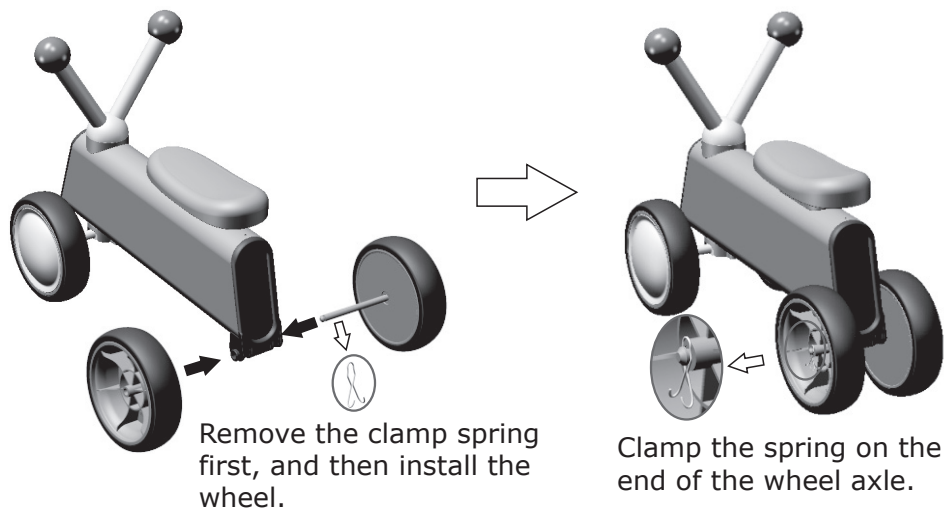
1. As shown in the picture, insert the handlebar into the body.



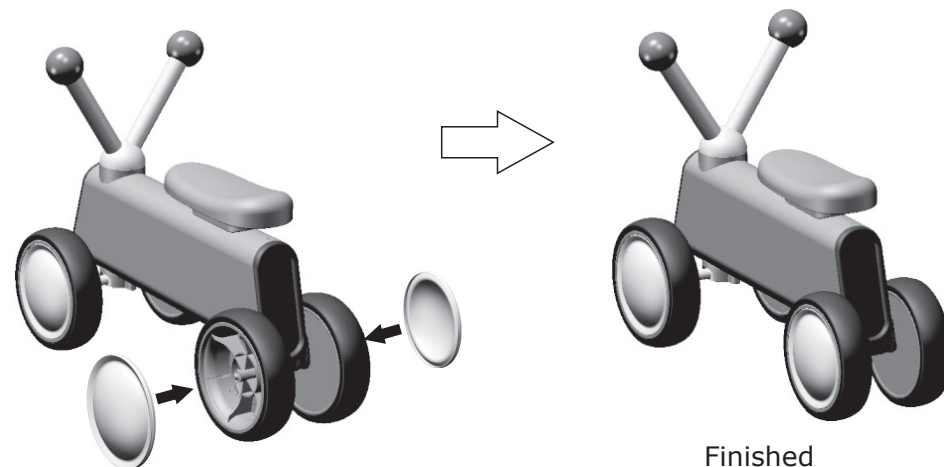
2. As shown in the picture, insert the front wheels into the lower hole of the handlebar until the buckle pops out.



3. As shown in the picture, first remove the clamp spring on one side of the rear wheel, then guide the axle through the hole of car body and the other rear wheel, and finally clamp the spring.



4. As shown in the picture, align the wheel cover with the wheel, and then press down firmly until the wheel cover is fully buckled.



Product Dimensions

- Suitable Age: 10-24 months
- Main Materials: High-quality PP + Aluminum alloy
- Net Weight: 1.70kg / 3.75lbs
- Gross weight: 2.29kg / 5.05lbs
- Carton Size: 42 x 33 x 16cm / 16" x 13" x 6"
- Product Size: 48 x 24 x 36cm / 19" x 9.5" x 14"

Safety Warning

This product is used for 10-24 months / weight limit below 25kg (55lbs).

In order to avoid accidents, please keep the following precautions in mind:

1. When the child is riding, the caregiver should not leave;
2. This product must be assembled by adults and used under adult supervision;
3. It will be very dangerous to bump into people or objects, make sure there is no obstacle around before playing;

4. Please do not use it in places with obstacles such as slopes, uneven surfaces, uneven roads, near ditches, stairs, porches, places with slopes, and near open flames; the use on public transport roads such as street roads and parking lots is also prohibited;
5. This toy requires high skills. In order to ensure that users and third parties are protected from falls and collisions, please use them with caution. Protective equipment, such as helmets, knee pads, etc., should be worn;
6. Do not use when the weight exceeds 25kg (55lbs);
7. Please be careful not to let kid's fingers, hair and clothes get clamped in the surrounding and rotating parts of the wheel;
8. Please be sure not to use this product for two people at the same time;
9. Do not use the product for other purposes than passenger use or as a platform;
10. Do not use this product when the product is damaged, deformed or malfunctions;
11. Please do not put it in the rain, pay attention to prevent moisture;
12. It may be dangerous to use the product when it is faulty. The guardian must check the good condition of the product regularly;
13. This product contains small parts and sharp edges before assembly, and is only for adults to assemble and for children to play;
14. After the package box is opened, put the plastic bags away in time to avoid children's suffocation;
15. Do not place any load on this vehicle, otherwise it will affect the stability of the vehicle;
16. Please read this manual carefully before use and keep it properly for future reference. If not used in accordance with this instruction manual may affect the safety of children.

Repair & Maintenance

To ensure the normal and safe use of this product and protect your baby from accidental injury, please check and maintain the car frequently.

1. Before assembly, check whether the components are complete.
2. Regularly check for loose screws and damaged parts.
3. When installing each component, please check whether it is in good condition.
4. Please clean the car regularly. Don't wash it with water, wipe it with a dry cloth.