



COSTWAY®



USER'S MANUAL

Kitchen Faucet

KC52633US

THIS INSTRUCTION BOOKLET CONTAINS **IMPORTANT** SAFETY INFORMATION. PLEASE READ AND KEEP FOR FUTURE REFERENCE.

Please give us a chance to make it right and do better!

Contact our friendly customer service department for help first.

Replacements for missing or damaged parts will be shipped ASAP!

Follow Costway

Visit us: www.costway.com



Contact Us!

Do NOT return this item.

Contact our friendly customer service department for help first.

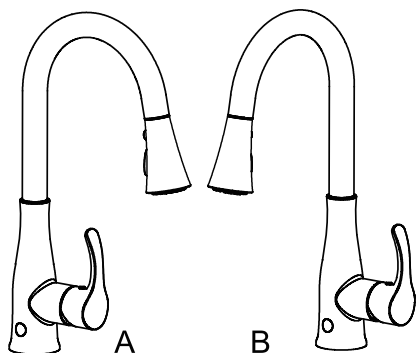


Before You Start

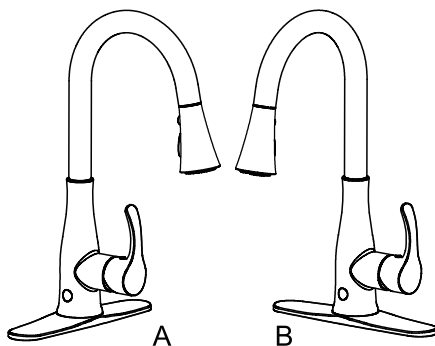
- ⚠ Please read all instructions carefully.
- ⚠ Retain instructions for future reference.
- ⚠ Separate and count all parts and hardware.
- ⚠ Read through each step carefully and follow the proper order.
- ⚠ We recommend that, where possible, all items are assembled near to the area in which they will be placed in use, to avoid moving the product unnecessarily once assembled.
- ⚠ Always place the product on a flat, steady and stable surface.
- ⚠ Keep all small parts and packaging materials for this product away from babies and children as they potentially pose a serious choking hazard.

- Notes:
- The dirt and impurities in the pipe shall be cleaned before installation.
 - If the water amount is reduced during use, please take off the filter screen and the bubbler in time for washing and put them back.
 - Use 4 alkaline AA batteries, positive and negative properly installed. The old and new batteries or different brands should not be mixed.
 - Please wipe the induction window with a clean dry soft cloth.
 - The sensor window indicator will flash every 3-4 seconds when the battery is low. Please replace the battery in time.

Motion sensor faucet

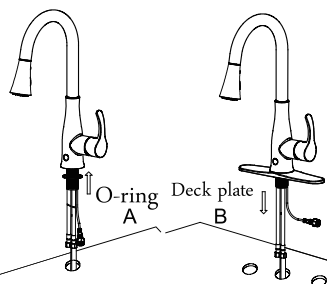


Single hole installation



3-hole installation

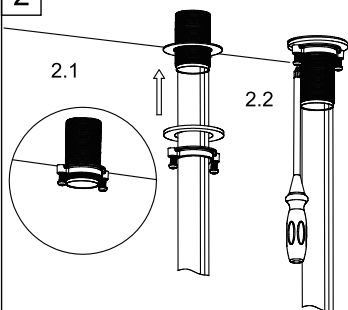
1



1.A. For 1-hole sink, insert the O-ring over the cable, hoses and the stem into the faucet bottom, and then mount the faucet on the sink.

1.B. For 3-hole sink, insert deck plate over the cable and hoses in the mounting stem, aligning the grooves in the deck plate with the arches on the faucet bottom, and then mount the faucet on the sink.

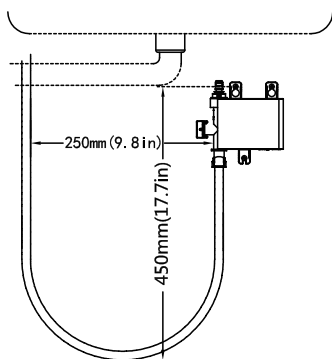
2



2.1. Slide the rubber gasket first, the metal washer second, and then the mounting nut over the hoses and the data cable onto the stem and hand tighten them firmly.

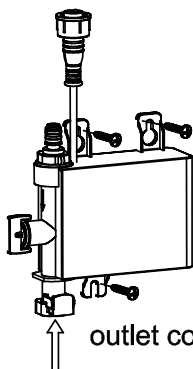
2.2. Use a cross screwdriver to thread the 2 screws.

3



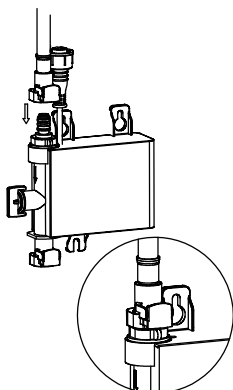
3. The preferred mounting distance between spray hose and control box is 250mm(9.8in). The preferred mounting distance from control box to the floor is 450mm(17.7in). The dimension shown in the figure is a preferred mounting distance for control box (The dimension is adjustable for better performance).

4

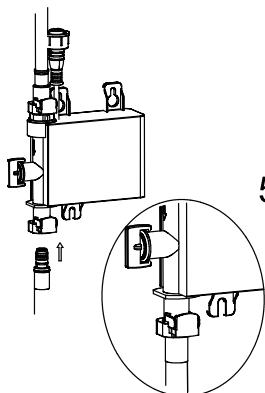


Mount the control box under the sink by a cross screwdriver according to the preferred dimension, leaving some room to adjust.

5

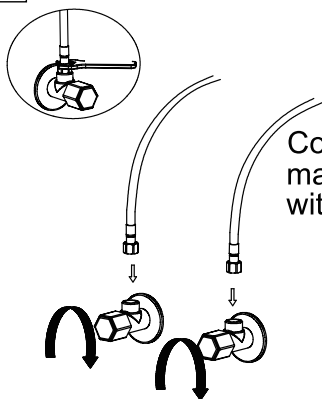


5.1. Connect the outlet hose to the control box with our innovative "quick connection".



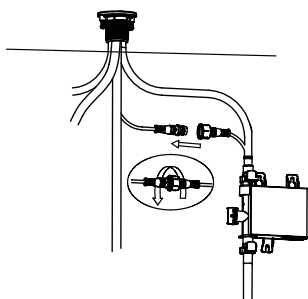
5.2. Connect the spray hose to the control box.

6

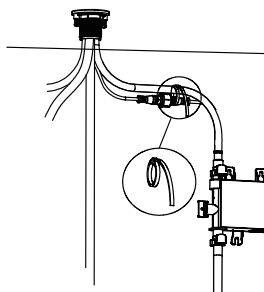


Connect the hot & cold supply lines onto the matching water valves and secure the connection with an adjustable wrench.

7

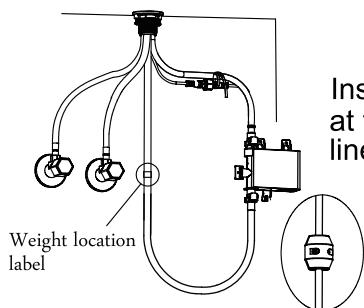


7.1. Connect the data cables and secure them tightly by hand.



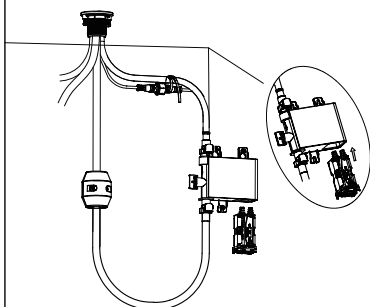
7.2. Tie the data cables together with the outlet hose by using a zip tie. Do not include the pulldown hose in the zip tie.

8



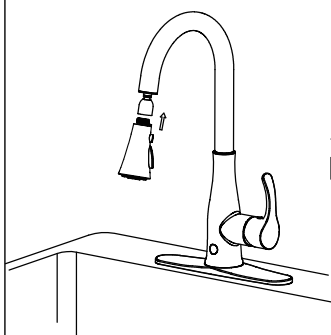
Install the counterweight on the pulldown hose at the marked position(it should be placed on the line); and secure it with a cross screwdriver.

9



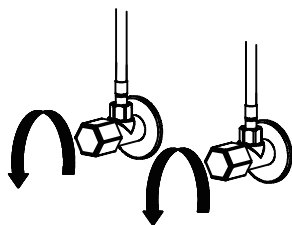
Remove the battery pack cover and take out the battery pack; insert 4 AA batteries. put the battery pack back in the control box and replace the cover firmly.

10



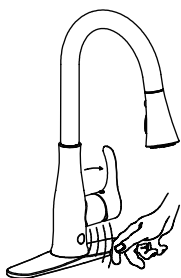
Attach and secure the spray head onto the pulldown hose.

11



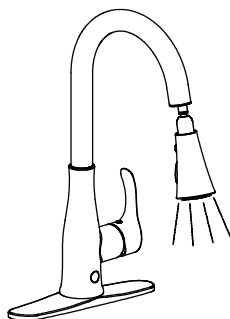
When installation steps 1-10 are completed, turn the hot & cold water inlets back on.

12



A

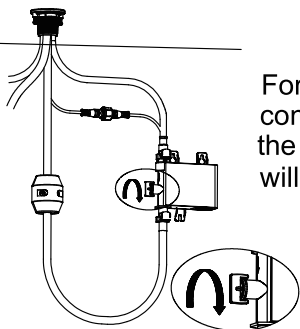
Turn on the faucet and wave your hand over the sensor; Set water temperature to desired setting. The water temperature changes by manipulating the handle. Run the water and it will stop automatically in 3 minutes. check for leaks.



B

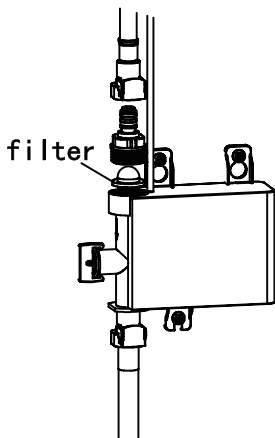
After the water comes out using the sensor, then pull out the spray head. Press the circular button, then the spray head can produce sheet pressure water, which is more convenient for washing dishes.

13



For manual operation, turn the knob beneath the control box counter-clockwise to the end (as shown in the figure). The sensor will be disabled and the faucet will be operational by the handle only.

14



If the water flow rate is lower than normal, there may be build up on the filter. Shut off the water valves and remove the supply hose from the control box: loosen the inlet "quick connection" and take out the filter; clean the filter and reassemble them back.

It is recommended to turn the handle off when the faucet will not be in use for an extended amount of time.

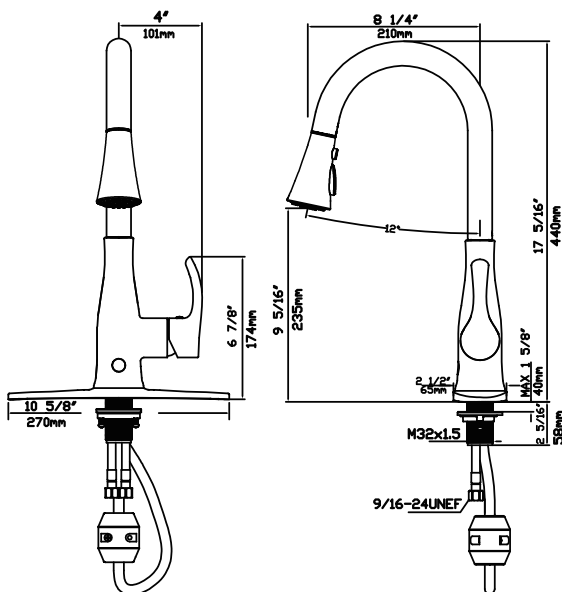
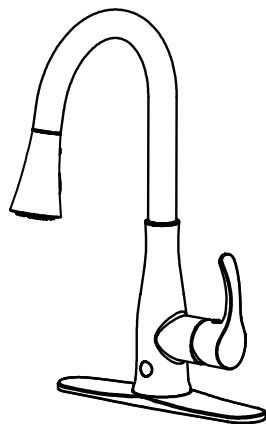
Motion sensor faucet

Feature:

- Metal lever handle
- With 3-function spray head
- Single -hole or 3-hole installation options
- Drip-free Ceramic cartridge
- 1.8 gallons per minute Max at 60 psi
- Metallic waterway
- Infrared sensor functions
- Trouble-free installation with patented mounting hardware and quick-connect

Model No./Color/Finishes:

- CP polished Chrome
- BN Brush Nickel PVD
- ORB Oil Rubber Bronze



Welcome to visit our website and purchase our quality products!

With your inspiring rating, COSTWAY will be more consistent to offer you
EASY SHOPPING EXPERIENCE, GOOD PRODUCTS and EFFICIENT SERVICE!

US office: Fontana, California

UK office: Ipswich



- * Reward Points
- * Exclusive Customer Service
- * Personalized Recommendations
- * Permanent Shopping Cart
- * Order History

5 Star Rating



We would like to extend our heartfelt thanks to
all of our customers for taking time to assemble
this product and giving us valuable feedbacks.

THANK
you
😊