

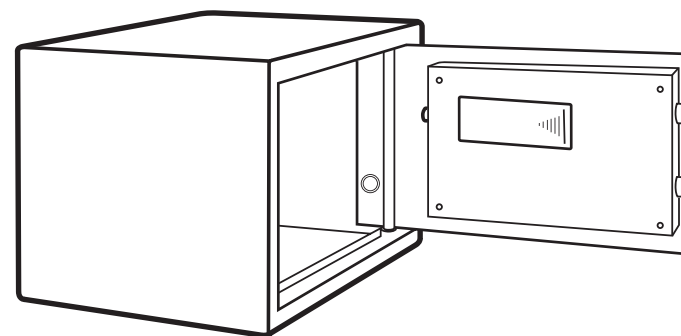


COSTWAY®

**Please give us a chance to make it right and do better !**

Contact our friendly customer service department for help first.  
Replacements for missing or damaged parts will be shipped ASAP !

**US** office: Fontana    **UK** office: Ipswich    **AU** office: Truganina  
**DE** office: Hamburg    **FR** office: Saint Vigor d'Ymonville    **PL** office: Gdańsk



## Contact Us!

**Do NOT return this item.**

Contact our friendly customer service department for help first.



US:cs.us@costway.com  
UK:cs.uk@costway.com  
AU:cs.au@costway.com

## USER'S MANUAL

**Safe Box  
EL10004**

THIS INSTRUCTION BOOKLET CONTAINS **IMPORTANT** SAFETY INFORMATION. PLEASE READ AND KEEP FOR FUTURE REFERENCE.



## Before You Start

- ⚠ Please read all instructions carefully.
- ⚠ Retain instructions for future reference.
- ⚠ Separate and count all parts and hardware.
- ⚠ Read through each step carefully and follow the proper order.
- ⚠ We recommend that, where possible, all items are assembled near to the area in which they will be placed in use, to avoid moving the product unnecessarily once assembled.
- ⚠ Always place the product on a flat, steady and stable surface.
- ⚠ Keep all small parts and packaging materials for this product away from babies and children as they potentially pose a serious choking hazard.

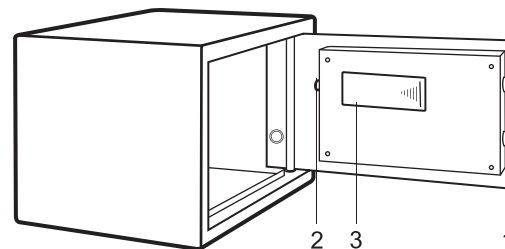
**! Please do not keep emergency keys in your safe!**

### **Dear valued customer:**

Thank you for choosing our products! You've taken an important step in organizing and protecting your most valued possessions. Every series of our safes is professionally made and designed to provide safety. Please take time to read and familiarize yourself with the proper operating procedures of your new safe presented on the following pages.

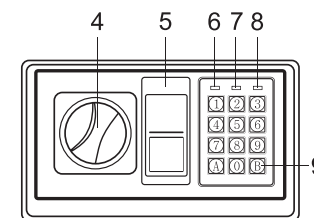
Again, thank you for choosing our products!

### **Schematic drawing of case**



- 1. Bolts
- 2. Reset Button
- 3. Battery Compartment
- 4. Knob (Master Key)

### **Schematic drawing of control panel**



- 5. Emergency Lock Cover
- 6. Green Light
- 7. Red Light
- 8. Yellow Light
- 9. Confirming button
- 10. Power supply: 4 X AA batteries

## OPENING YOUR SAFE FOR THE FIRST TIME

Upon first opening, users should open the safe with the emergency key. The operation in details refers to "opening the safe with the emergency key".

- Remove emergency lock cover, then insert the emergency key, and turn it count clockwise.
- Turn the knob (master key) clockwise to open the door.

❗ **CAUTION:** Finish operation, pull out the emergency key and keep it in a safe place.

## INSERTING THE BATTERIES

- Open the door.
- Insert 4 X AA batteries into the battery compartment.
- Under normal condition, if both of the red and the green lights are on at the same time, it means the voltage is low and you should insert new batteries.

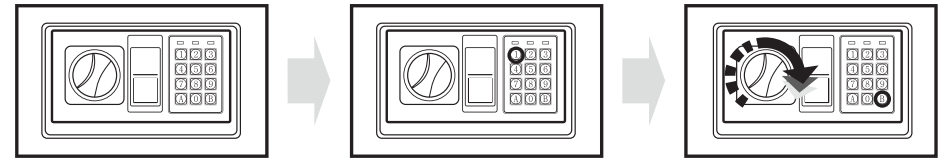
❗ **CAUTION:** Replace 4 new batteries by lining them up in a manner as indicated by the "+" and "-" signs. When outage for longer than thirty minutes, you should reset the user's code.

## OPENING DOOR

- Input your user's code (3 to 8 digits), each pressing results one buzzer beep and yellow light flashes.

- Press "A" (C/#) or "B" (E/ \*) button, the green light will be on.
- Rotate the knob (master key) clockwise and pull outwards within 5 seconds, the door is opened.

❗ **CAUTION:** The user preset code "159". Please input the user code again if the yellow light flashes with three buzzer beeps.



## CLOSING DOOR

- Turn the knob (master key) counter clockwise to close the door.

## AUTOMATIC LOCK

- 3 continuously wrong entries will activate the warning beep for 20 seconds.

❗ **CAUTION:** The key pad would be disabled during the beeping. You can only stop the beeps by opening the safe with emergency key and power-cut by removing the battery.

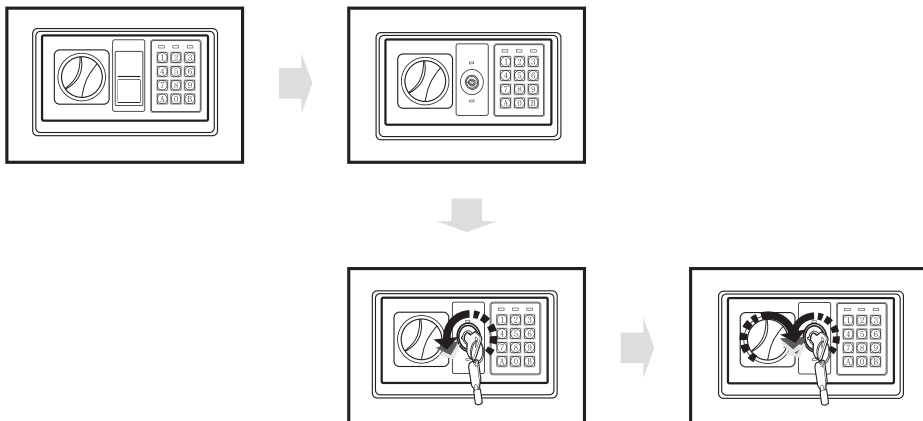
## SETTING THE USER CODE

- With the door open, press the reset button one, start setting code when the yellow lights goes on.
- Input new code (3-8 digits), and press the "A"(C1#) or "B"((E/\*) button to confirm with 2 buzzer beeps, which indicates the acceptance and storage of the new code.
- If the yellow light flashes with 3 buzzer beeps, which means the code changing is not effective, and you need to try again.

## OPENING THE SAFE WITH THE EMERGENCY KEY

Upon first receipt of the safe, or either the electronic circuit malfunction or codes unknown. You could also use the emergency key to open the sale.

- Remove the cover of the emergency lock.
- Insert the emergency key, turn it count clockwise, then turn the knob (master key) clockwise to open the door.



## MOUNTING METHOD

Fix the safe. in the place which is not easy ta move

- Drill holes for expansion bolts (or clamping screws) in the right place.
- Turn the expansion bolts counter clockwise to separate.
- Use the expansion bolts (or clamping screws) to secure the case to the wall.
- Make sure the case is mounted in place as required and then tighten all screws.

**! CAUTION:** Use the expansion bolt when there is a concrete wall surface. Use the clamping screw when there is a wooden wall surface.

