



COSTWAY®



USER'S MANUAL
Oil Filled Radiator
EP22913

THIS INSTRUCTION BOOKLET CONTAINS **IMPORTANT** SAFETY INFORMATION. PLEASE READ AND KEEP FOR FUTURE REFERENCE.

Please give us a chance to make it right and do better!

Contact our friendly customer service department for help first.

Replacements for missing or damaged parts will be shipped ASAP!

Follow Costway

Visit us: www.costway.com



Contact Us!

Do NOT return this item.

Contact our friendly customer service department for help first.



Before You Start

- ⦿ Please read all instructions carefully.
- ⦿ Retain instructions for future reference.
- ⦿ Separate and count all parts and hardware.
- ⦿ Read through each step carefully and follow the proper order.
- ⦿ We recommend that, where possible, all items are assembled near to the area in which they will be placed in use, to avoid moving the product unnecessarily once assembled.
- ⦿ Always place the product on a flat, steady and stable surface.
- ⦿ Keep all small parts and packaging materials for this product away from babies and children as they potentially pose a serious choking hazard.

IMPORTANT INSTRUCTIONS

When using this appliance, basic precautions should always be followed to reduce the risk of fire, electric shock and injury to persons, including the following:

CAUTION - Hightemperatures - keep electrical cords, drapery, and other furnishings at least 3 feet (0.9m) from the front of the heater and away from the sides and rear.

1. Read all instructions before using the heater.
2. Remove the unit from its packaging and check to make sure it is in good condition before using.
3. Do not let children play with parts of the packing (such as plastic bags).
4. Check the household voltage to ensure it matches the heater's rated specification.
5. Check the power cord and plug carefully before use to make sure that they are not damaged.
6. Before unplugging the power cord, be sure to turn off the power. When touching the unit, be sure your hands are dry to prevent from receiving an electric shock.
7. Do not use near to, or point the heatertowardsfurniture, curtains, or other inflammable objects. Keep combustible materials, such as furniture pillows, bedding, papers, clothes, and curtains at least 3 feet (0.9m) from the front of the heater and keep them away from the sides and rear.
8. Do not block air intakes or exhaust in any manner to prevent a possible fire.
9. Extreme caution is necessary when any heater in used by, or nearchildren or invalids, and whenever the heater is left operating and unattended.
10. Always unplug the heater when not in use.
11. Prevent water from getting into the housing of the heater during operation or in storage. Always store in a dry area, free from potential moisture.
12. Do not use in places where gasoline, paint, or other inflammable liquids are used or stored.
13. This heater is not intended for use in bathrooms, laundry areas, or similar indoor locations. Never locate the heater where it may fall into a bath tub or other body of water.
14. Do not run the cord under carpeting. Do not cover the cord with throw rugs, runners, or the like. Arrange the cord away from traffic areas and where it will not be tripped over.
15. Do not use on soft surfaces, like a bed, where openings may became blocked. Do not place the heater near a bed because objects such as pillows or blankets can fall off the bed and be ignited by the heater.
16. Do not operate the heater with a damaged cord or damaged plug. After the heater malfunctions, or it has been dropped or damaged in any manner, return the heater to an authorized service facility for examination, electrical or mechanical adjustment, or repair.
17. Do not insert or allow foreign objects to enter any ventilation or exhaust opening as this may causean electric shock or exhaust opening as this may causes an electric shock, fire, or damage the heater.
18. This heater is hot when in use. To avoid burns, do not let bare skin touch the hot surfaces. If provided, use handles when moving this heater.

IMPORTANT INSTRUCTIONS

19. Use this heater only as described in this manual. Any other uses not recommended by the manufacturer may cause fire, electric shock, or personal injury and may void the warranty.
20. Always plug heaters directly into a wall outlet/receptacle. Never use with an extension cord or relocatable power tap (outlet/power strip)
21. Do not use outdoors.
22. To disconnect heater, turn controls to off, then remove plug from outlet.
23. Never clean this heater while it is plugged in. Do not immerse it in water. To disconnect, turn control to OFF, then remove the plug from the outlet by grasping it and pulling it from the outlet. Never yank on the cord.
24. This appliance is not intended for use by persons (including children) with reduced physical, sensory or mental capabilities, or lack of experience and knowledge, unless they have been given supervision or instructions by a person responsible for their safety.
25. Children should be supervised to ensure that they do not play with the appliance.
26. The heater must not be located immediately below a socket-outlet.
27. This heater is filled with a precise quantity of special oil. Repairs requiring opening of the oil container are only to be made by the manufacturer or his service agent, who should be contacted if there is an oil leak.
28. When scrapping the heater, follow the regulations concerning the disposal of oil.

SAFETY SYMBOLS

Read all of the safety and operating instructions carefully before using this tool.
Pay particular attention to all sections of this User Guide that carry warning symbols and notices.



	Warning
	Read operator's manual
	Wear eye and ear protection
	Don't expose to rain
	Remove the plug from the mains immediately if cable is damaged or cut.
	Keep all bystanders at least 15m(50ft) away.

UNPACKING

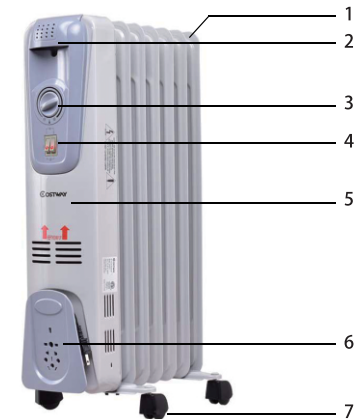
Check immediately whether all parts and accessories are present in the box.

PACKAGING INCLUDES:

- Caster brackets (X2)
- U-bolt (with right angle bend) (X2)
- Butterfly bolts (X4)

PARTS DESCRIPTION

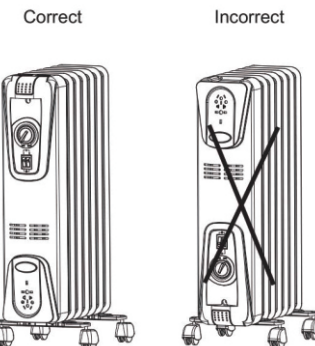
1. Oil fins (x7)
2. Carry handle
3. Thermostat control
4. Power & setting control
5. Front panel
6. Power cord housing
7. Rolling casters



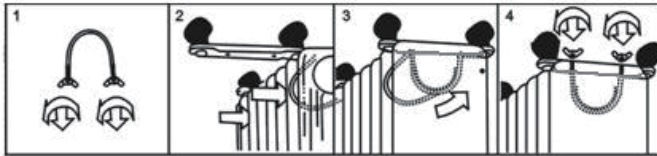
ASSEMBLY

The heater is packaged with the feet unattached. You must attach them before operating the heater.

WARNING: Do not operate without feet attached. Do operate the heater only in upright position (feet on the bottom, controls on the top), any other position could create a hazardous situation.



1. Place the radiator body upside-down on a scratch-free location, make sure it is stable and will not fall.
2. Screw off the wing nuts from the U-shaped bolt provided, attach the U-shaped bolt to the U-facing flange between first and second fins(near the front cover).
3. To attach the castor mounting plate to the radiator body, you should insert the threaded ends of the U bolt in the holes on the castor mounting plate.
4. Screw the wing nuts back to the U bolt and fasten the wing nut properly.
Note: do not over tighten, which may cause the damage of radiator flange.
5. Repeat 2, 3, and 4 on the rear of radiator for mounting of the rear castors.
Note: the rear castors must be mounted between the end two fins.



To operate, connect to a properly polarized outlet only. Ensure the unit is in the OFF position. Match wide blade of plug to wide slot and fully insert. Be sure to plug into a 120V AC, 60Hz outlet.

NOTE1: WHEN THE HEATER IS PLUGGED IN, THE POWER INDICATOR WILL BE ILLUMINATED UNTIL IT IS TURNED OFF AND UNPLUGGED.


NOTE2: THE HEATER WILL NOT OPERATE UNLESS IT IS PROPERLY PLUGGED INTO A POLARIZED OUTLET AND POWERED ON.

NOTE3: IT WILL NORMALLY REQUIRE APPROXIMATELY 15 MINUTES FOR THE HEATER TO REACH ITS OPERATING TEMPERATURE.

YOUR HEATER IS EQUIPPED WITH 3-CONTROL SETTINGS AND THERMOSTAT.

Heat Setting Control:		
Pressing Left Switch to:	Pressing Right Switch to:	Combination Results
O	O	Unit and power light is OFF No heat is produced.
I	O	Unit and power light is ON, Heater is on LOW setting.
O	II	Unit and power light is ON, Heater is on MEDIUM setting.
I	II	Unit and power light is ON, Heater is on HIGH setting.



Thermostat Control : This heater is equipped with a thermostat function to control the temperature output. To increase the heat output, turn the dial clockwise. To reduce the heat output, turn the dial counter-clockwise.

Press the both power switches down at I and II for fast warm-up of a room and turn the thermostat to

maximum (⊕). Once the room is comfortable, slowly rotate the thermostat counterclockwise until the heater shuts off - you will hear a "click". The thermostat will now maintain the temperature by cycling the heater on or off as required. Once the room is comfortable, select a lower power setting at either [I or O] or [II and O] to reduce electrical consumption and to prevent the room from becoming too warm. During particularly cold weather, the low setting at I or II power setting(s) may be insufficient to maintain the temperature set at the thermostat. Select [I and II] for these periods. To turn off heater, press both switches down to O.

SAFETY FEATURES OF THIS HEATER

Thermal Cut-Off: The heater will automatically shut off when parts of it overheat. If this occurs, turn the heater OFF and unplug it. Inspect the unit, and remove any objects that are on or adjacent to the unit that may cause overheating. Wait 15-20 minutes for the unit to cool down. Then plug it back into the outlet in order to resume normal operation.

SPECIFICATIONS

Model Number	EP22913
Power Supply	120 volts AC, 60Hz
Power Consumption	600W (low heat setting) 900W (medium heat setting) 1500W (high heat setting)

CLEANING AND STORAGE

Before any cleaning, make sure that the heater is turned off and plugged from the power source.

Regular Cleaning:

1. Prepare a mild detergent-water solution. Do not use cleaning liquid or other chemicals to spray directly on the unit.
2. Use a clean, soft and lightly damp cloth to gently wipe off the dirt from the surface of the unit only.
3. Do not attempt to open the heater to clean it. Doing so will damage the unit and void the warranty.

NOTE: THE FINS ARE PERMANENTLY SEALED AND DO NOT REQUIRE ANY OIL CHANGE.
CAUTION: DO NOT ALLOW WATER TO RUN INTO THE INTERIOR OF THE HEATER AS THIS COULD CREATE A FIRE OR ELECTRIC SHOCK HAZARD, DAMAGING THE UNIT.

STORAGE

1. Perform the cleaning procedures described above.
2. Wipe all parts to dry.
3. Pack the heater in a plastic bag and store it in a cool, dry place.

TROUBLESHOOTING

If your heater fails to operate, please follow these procedures before contacting Customer service:

Problem	Probable Cause	Solution
The heater will not power on.	The thermal cut-off has been activated	Unplug and turn the heater off; allow it to cool for 30 minutes. Once the heater has cooled off, check to make sure that there are no objects on or adjacent to the unit. To resume operation, plug the unit back in.
	Heater is not plugged into a 120V polarized outlet/receptacle.	Ensure unit is in OFF position. Plug in unit and attempt to turn on again.
	Breaker/Fuse has been tripped.	Check your electrical box to confirm the breaker has not been blown. This may occur if the receptacle is shared between other high consumption appliances. Ensure unit is in the OFF position. Plug in unit and attempt to turn on again. Attempt to plug unit into another receptacle in the house.
Power light is on, but no heat is emitting from the unit.	Room temperature has warmed up to thermostat setting.	To increase the room temperature, adjust thermostat control knob to a higher setting by turning clockwise.
	The heating elements inside the unit have not warmed up yet.	Allow 15 minutes after the unit has been turned on for the oil fins to heat.
The heater is creating a burning smell.	Check & ensure there are no combustible materials 3' (0.9 m) surrounding the heater.	Remove the combustible units adjacent to the heater.
	The heater feet have not been properly installed on the unit.	Follow assembly instructions on how to attach front and hind legs to the unit.
The heater is making small crackling sounds.	It is normal for the heater to emit small crackling sounds as it heats the oil inside the fins.	Allow heater to operate for a period of time. After the heater has warmed up, the crackling sounds should stop. Do not be alarmed. It will go away after approximately 15 minutes.

PLEASE DO NOT ATTEMPT TO OPEN OR REPAIR THE HEATER YOURSELF. DOING SO COULD VOID THE WARRANTY AND CAUSE DAMAGE OR PERSONAL INJURY.

Welcome to visit our website and purchase our quality products!

Your suggestions and comments for COSTWAY are really important to us!

We sincerely solicit you to go back to our shop and leave a good rating in just a simple click. It would be quite encouraging if you could kindly do so like below:

★★★★★ Great products so far

February 24, 2019

Great products so far. Fast delivery, easy setup, and working without any issues.

With your inspiring rating, COSTWAY will be more consistent to offer you EASY SHOPPING EXPERIENCE, GOOD PRODUCTS and EFFICIENT SERVICE!

US office: Fontana, California

UK office: Ipswich



- * Reward Points
- * Exclusive Customer Service
- * Personalized Recommendations
- * Permanent Shopping Cart
- * Order History

5 Star Rating



We would like to extend our heartfelt thanks to all of our customers for taking time to assemble this product and giving us valuable feedbacks.

THANK
YOU
😊