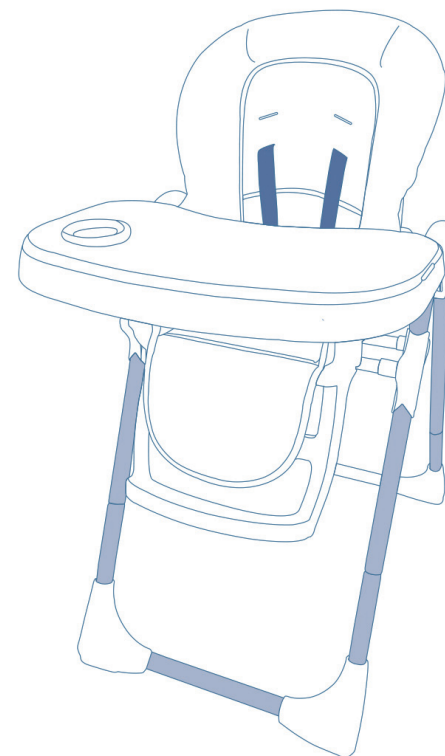




COSTWAY®



USER'S MANUAL
BABY HIGH CHAIR
BB5656

THIS INSTRUCTION BOOKLET CONTAINS **IMPORTANT** SAFETY INFORMATION. PLEASE READ AND KEEP FOR FUTURE REFERENCE.

Please give us a chance to make it right and do better!

Contact our friendly customer service department for help first.

Replacements for missing or damaged parts will be shipped ASAP!

Follow Costway

Visit us: www.costway.com



Contact Us!

Do NOT return this item.

Contact our friendly customer service department for help first.



Before You Start

Please read all instructions carefully and keep it for future reference.

General Warnings:

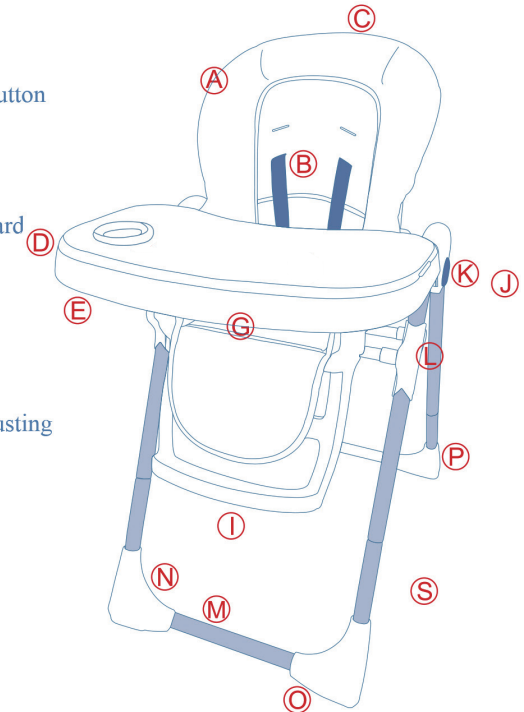
- ⚠ **Danger!** Keep all small parts and packaging materials for this product away from babies and children, otherwise they may pose a choking hazard.
- ⚠ The product must be installed and used under the supervision of an adult.
- ⚠ Read through each step carefully and follow the proper order.
- ⚠ Remove all Packaging, separate and count all parts and hardware before Installation.
- ⚠ Please ensure that all parts are correctly installed, incorrect Installation can lead to a Danger.
- ⚠ We recommend that, where possible, all items are assembled near to the area in which they will be placed in use, to avoid moving the product unnecessarily once assembled.
- ⚠ Ensure a secure surface during construction, and place the product always on a flat, steady and stable surface.

Instruction Manual/Components Introduction

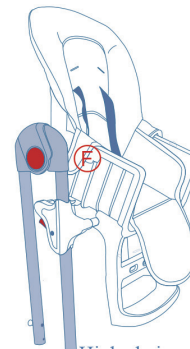
BCH268-Double- Hands Adjusting Trays

(The adjusting button is located at E in front of the tray, and the tray can be adjusted with both hands.)

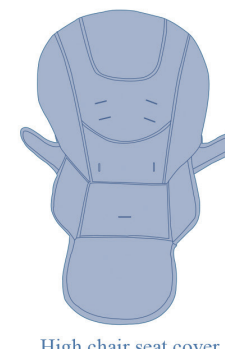
- A seat cover
- B safety harness
- C seat back adjusting button
- D double layer tray
- E tray adjusting button
- F tray armrest
- G detachable crotch guard
- H waist strap/crotch strap/locking catch
- I foot rest
- J high chair assembly
- K leg folding button
- L high chair height adjusting button
- M leg
- N foot
- O front fixed foot
- P rear caster



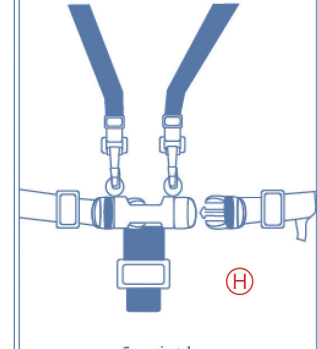
Components List



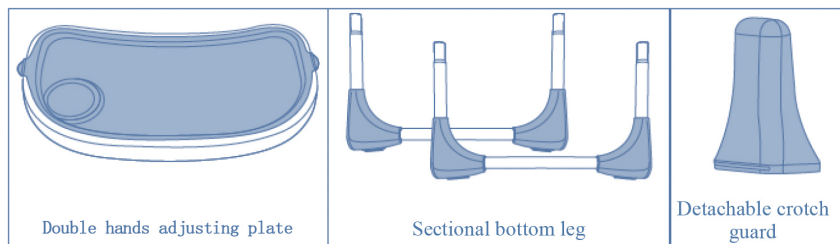
High chair assembly



High chair seat cover



5-point harness



Warnings



Warning: The model of high chair and the amount of wheels may vary according to different countries.

Instruction for Use: IMPORTANT: Please read the following warnings and instructions carefully to keep your child safe.

Warning: To protect your child from suffocation, please remove the plastic package from the product before use.

Warning: Adult should help your child sit upright in the high chair. The high chair is recommended for children up to 6-36 months or about 33 lbs. Adult should know how to use the high chair safely.

Warning: Before assembling, inspect the high chair and all components if they are damaged during transportation. Do not resume the assembly of the high chair in case that any parts are damaged. Keep the parts out of child's reach. Stop using the high chair if any parts are damaged, broken or lost. Adult is required to open or fold the high chair.

Warning: When opening, adjusting or folding the high chair, keep your child within the safety distance of the high chair. And keep your child out of reach when adjusting the high chair.

Warning: Do not use the high chair unless all parts and components are correctly fitted. Do not use the high chair without any components or any parts unauthorized by the manufacturer to avoid safety incidents.

Warning: Ensure all safety devices are properly installed before use. In particular, make sure that the high chair is locked in the open position.

Warning: Do not leave your child unattended.

Warning: Ensure the safety harness and crotch strap are fitted properly to keep your child safe.

Warning: The removable tray is not designed to hold the child in the chair safely. Safety harness must be buckled up!

Warning: If your high chair is equipped with wheels, fix the crotch strap properly before assembling the high chair. Do not move it once the crotch strap is fixed.

Warning: If your high chair is equipped with wheels, always ensure both brakes are applied when your child sits in the high chair.

Warning: Do not place your child in the seat without fitting the safety harness correctly.

Warning: Your child's safety must come first. Do not move the crotch strap once it is fixed.

Warning: Once brakes are applied, even an active child could tip over with the high chair. Always keep your child in view to prevent your child from climbing out of the high chair. High chair should be used by one child at a time. Do not put bags or any objects on the tray or hang them on the high chair as it may cause the high chair to tip over.

Warning: Beware of the risk of burning or fire and keep the high chair away from the electric appliances, gas cookers or other sources of strong heat. In addition, keep the high chair away from electrical cords.

Do not place the high chair near windows or walls to prevent your child from climbing out of the high chair with the aid of neighboring objects or others. Be aware of the risk of suffocation or choking.

Do not place the high chair near windows or walls to prevent your child from making the high chair tip over.

If the high chair is exposed to the sunshine for a long time, do not place your child in it unless it is cooled.

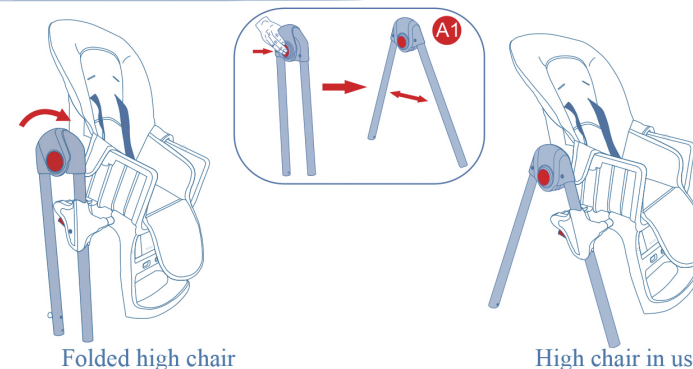
Do not expose your high chair to the sunshine for a long time as it may cause the color of the seat cloth to fade.

Warning: Store the high chair out of your child's reach when not in use.

Instruction for Use How to Assemble/Open the High Chair

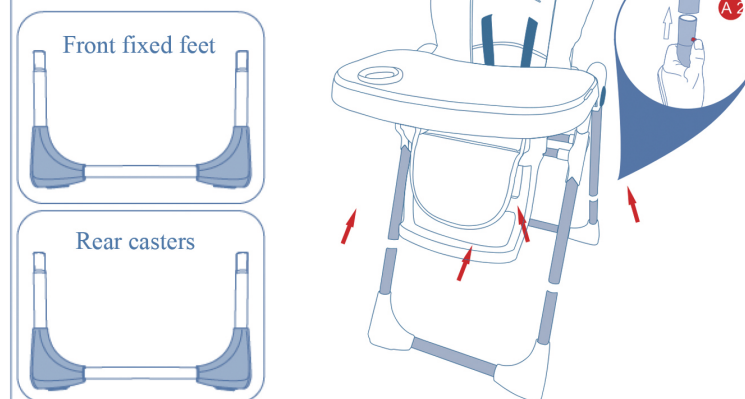
When opening the high chair, ensure that your child and other children are at a safe distance. When installing the high chair, always make sure that your child is clear of all moving parts.

01 Open the high chair assembly



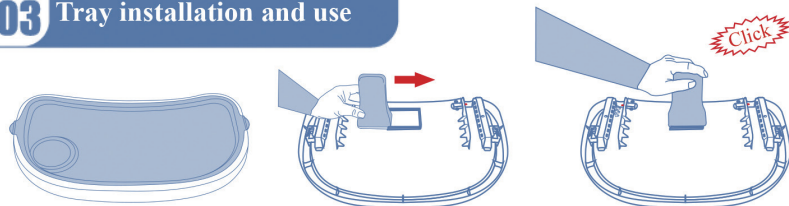
1. As shown in Figure, unfold frame so that the high chair is in open position. Rotate the tray armrests and put it down in direction of the arrow. Rotate the foot rest and the high chair assembly to put them down properly. (As shown in Figure, press buttons at both sides of legs to make them separate, release the buttons to lock the legs.)

02 Install front and rear legs

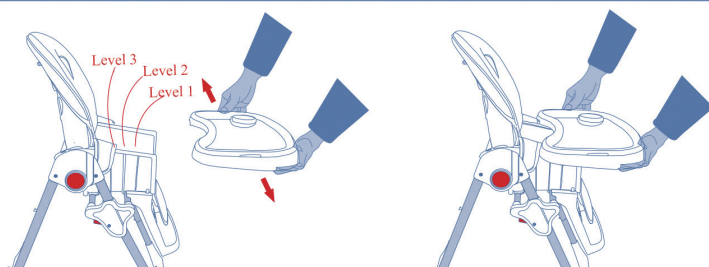


2. Install front legs as fixed feet. As shown in Figure, squeeze the snap spring and insert front legs into the connection point. The rear legs are taken as the rear casters. As shown in Figure, squeeze the snap spring and insert the rear legs into the connection point.

03 Tray installation and use



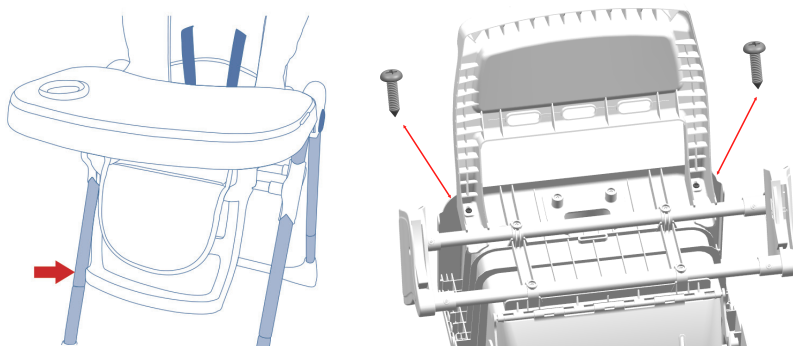
Install the tray into the slot located at the bottom of the tray. Put the guard into the slot as shown in Figure. The tray will lock in position with a “click” sound.



Squeeze the button at the bottom of the tray, slide the tray into the groove of the armrests (there are 3 positioning holes at the tray armrests). When attempting to adjust the tray, first to press the button at the bottom of the tray and adjust the tray to the desired position. The tray will lock the position when releasing the button.

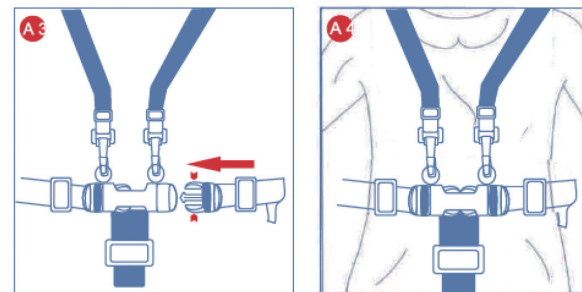
Warning: Make sure to install the crotch guard first before fitting the tray on the high chair to keep your child safe. Now you can install the flexible tray on your high chair.

04 Foot rest fixed



1. You can install the foot rest on the tube under the high chair seat by using some screws.
2. The foot rest is fixed and cannot be adjusted.
3. Two screws need to be installed on the back

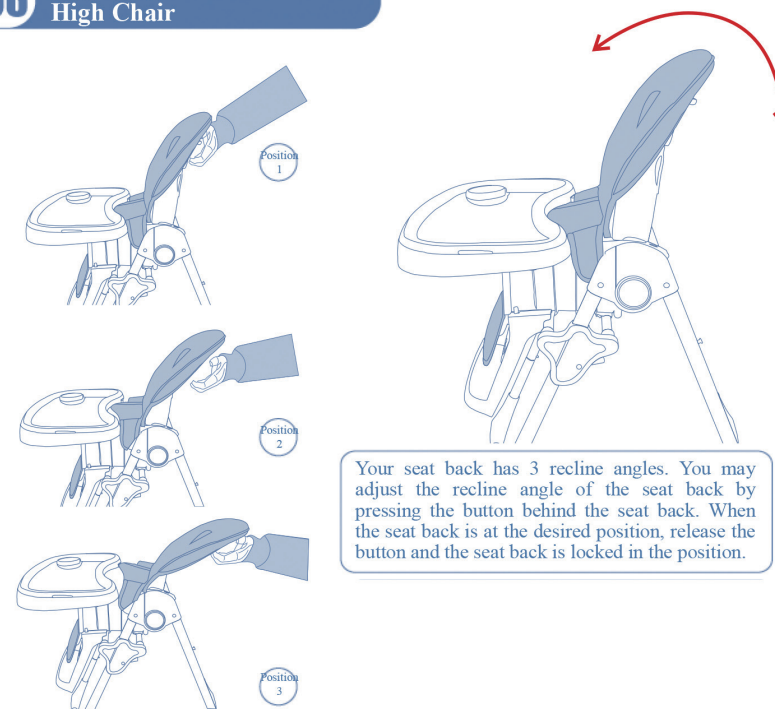
05 Using the Safety Harness



Release the safety harness (Figure A3) 5-point harness is provided. Place your child in the high chair and fasten the harness properly (Figure A4). There are two height positions for the harness.

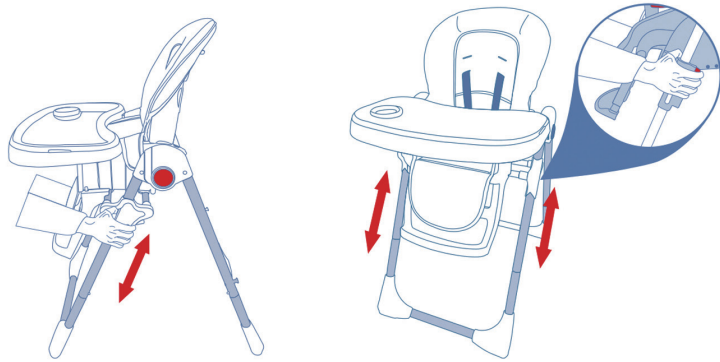
Warning: Ensure the safety harness and crotch strap are fitted properly to keep your child safe. The removable tray is not designed to hold the child in the chair safely. Safety harness must be worn!

06 Adjusting Seat Back of the High Chair



Your seat back has 3 recline angles. You may adjust the recline angle of the seat back by pressing the button behind the seat back. When the seat back is at the desired position, release the button and the seat back is locked in the position.

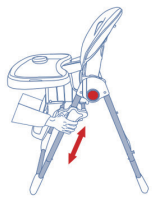
07 Adjusting the Height of the High Chair



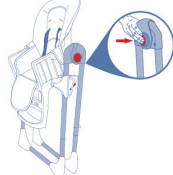
To adjust the height of the high chair, press buttons on legs at both sides and adjust it to the desired height. Do not release the buttons until the slots at the desired position are locked. Do not adjust the height of the high chair with the child in it!

Warning: DO NOT adjust the height of the product when the child sits in it.

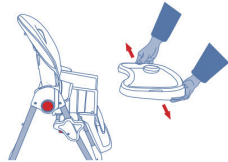
08 To Fold Up the High Chair



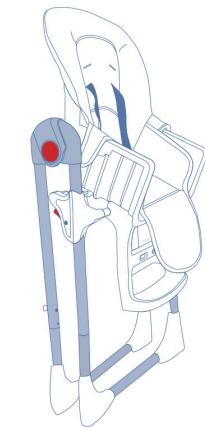
Lower the high chair assembly



Push the rear legs in the direction of the front legs until folded



Slide tray out



Folding the high chair is completed.

Warning: When folding up the high chair, ensure that your child and other children are at a safe distance. Always make sure that your child is not around when you operate all moving

Maintenance

Please store the high chair in a dry place. Avoid any frictions which may affect the proper function of the high chair. Ensure all movable plastic parts along the metal frame are free from dust, dirt or sand particles. Wipe slightly these assemblies with small amount of lubricant only when it is necessary.

Cleaning and Maintenance

Adult is required to clean and maintain the high chair.

Cleaning

Use soft wet cloth or neutral detergent to clean the cloth cover. Remove the cloth cover from the high chair in reverse order of installation. (Updated revision: Operation 7D-7F).

Welcome to visit our website and purchase our quality products!

With your inspiring rating, COSTWAY will be more consistent to offer you
EASY SHOPPING EXPERIENCE, GOOD PRODUCTS and EFFICIENT SERVICE!

US office: Fontana, California

UK office: Ipswich



- * Reward Points
- * Exclusive Customer Service
- * Personalized Recommendations
- * Permanent Shopping Cart
- * Order History

5 Star Rating



We would like to extend our heartfelt thanks to
all of our customers for taking time to assemble
this product and giving us valuable feedbacks.

