

**EN**

With your inspiring rating, COSTWAY will be more consistent to offer you EASY SHOPPING EXPERIENCE, GOOD PRODUCTS and EFFICIENT SERVICE!

**DE**

Mit Ihrer inspirierenden Bewertung wird COSTWAY konsistenter sein, um Ihnen EIN SCHÖNES EINKAUFSERLEBNIS, GUTE PRODUKTE und EFFIZIENTEN SERVICE zu bieten!

**FR**

Avec votre évaluation inspirante, COSTWAY continuera à fournir une EXPÉRIENCE D'ACHAT PRATIQUE, des PRODUITS DE QUALITÉ et un SERVICE EFFICACE !

**ES**

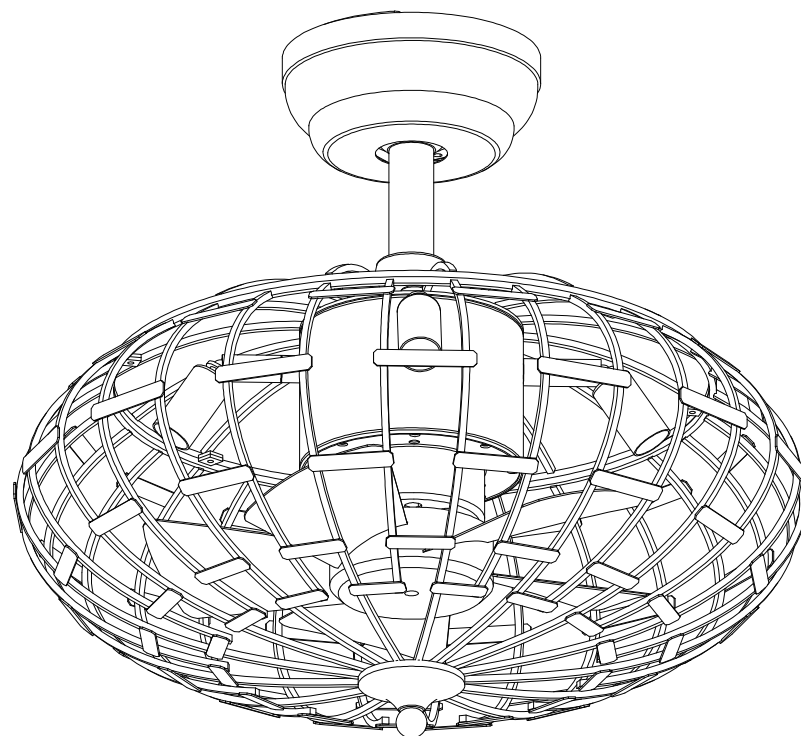
Con su calificación inspiradora, COSTWAY será más consistente para ofrecerle EXPERIENCIA DE COMPRA FÁCIL, BUENOS PRODUCTOS y SERVICIO EFICIENTE.

**IT**

Con la tua valutazione incoraggiante, COSTWAY sarà più coerente per offrirti ESPE-RIENZA DI ACQUISTO FACILE, BUONI PRODOTTI e SERVIZIO EFFICIENTE!

**PL**

Dzięki twojej opinii COSTWAY będzie mógł oferować jeszcze WYGODNIEJSZE ZAKUPY, LEPSZE PRODUKTY i SPRAWNIEJSZĄ OBSŁUGĘ KLIENTA.

**USER'S MANUAL****ES10066US**

18"Industrial Fan Lamp

**US** office: Fontana**UK** office: Ipswich**DE** office: Hamburg**FR** office: Saint Vigor d'Ymonville**PL** office: Gdańsk

## Safety Information

1. To reduce the risk of electric shock, the electricity has been turned off at the circuit breaker or fuse box before begin.
2. All wiring must be in accordance with the National Electrical Code NASI/NFPA 70-1999 and local electrical CODES. Electrical installation should be performed by a qualified licensed electrician.
3. The outlet box and support structure must be securely mounted and capable of reliably supporting 35lbs. (15.9kg). Use only UL listed outlet boxes marked "Acceptable for Fan Support of 35lbs (15.9kg) or less."
4. The fan must be mounted with a minimum of 7 ft. (2m) clearance from the trailing edge of the blades to the floor.
5. Do not operate the reversing switch while the fan blades are in motion. You must turn the fan off and stop the blades before you reverse the blade direction.
6. Do not place objects in the path of the blades.
7. To avoid personal injury or damage to the fan and other items, please be careful when working around or cleaning the fan.
8. Electrical diagrams are for reference only. Light kits that are not packed with the fan must be UL -listed and marked suitable for use with the model fan you are installing. Switches must be UL General Use Switches. Refer to the instructions packaged with the light kits and switches for proper assembly.
9. After making electrical connections , spliced conductors should be turned upward and pushed carefully up into the outlet box. The wires should be spread apart with the grounded conductor and the equipment-grounding conductor on one side of the outlet box.
10. All set screws must be checked and retightened where necessary before installation.

## WARNING

To reduce the risk of personal injury, do not bend the blade brackets (also referred to as flanges) during assembly or after installation. Do not insert objects in the path of the blades .

Remove the rubber motor stops on the bottom of the fan before installing the blades or testing the motor.

To reduce the risk of fire or electric shock, do not use this fan with any solid-state speed control device.

To avoid possible electric shock, turn the electricity off at the main fuse box before wiring. If you feel you do not have enough electrical wiring knowledge or experience , contact a licensed electrician.

Electrical diagrams are for reference only. Optional use of any light kit shall be UL-listed and marked suitable for use with this fan.

To reduce the risk of fire, electric shock, or personal injury, mount to outlet box marked "Acceptable for fan support of 35 lbs. (15.9 kg) or less" and use the screws provided with the outlet box.

## SPECIFICATION

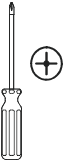
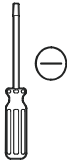
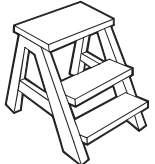
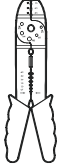
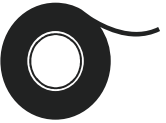
Size	Speed	Volts	Amps	Watts	RPM	Net Weight	Gross Weight	Cube Feet
18in	Low	120	0.21	13	730	11.2lb	16.3lb	4.56cu.ft
	Medium		0.35	19	1000	5.1kg	7.4kg	
	High		0.55	24	1250			

The above data are for reference only, Actually the motor speed of each ceiling fan is a little different. Any products, Subject to actual products as standard.

<b>NOTE</b>	These are approximate measures.They do not include the amps and wattage used by the light kit.
-------------	--

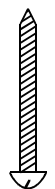
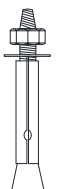
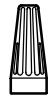
Specifications & measurements shown are subject to  $\pm 5\%$  variations.

## TOOLS REQUIRED

				
Phillips screwdriver	Flat blade screwdriver	Step ladder	Wire stripper	Electrical tape

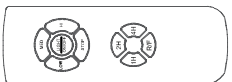
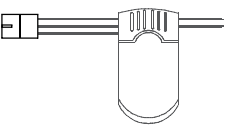
## HARDWARE INCLUDED

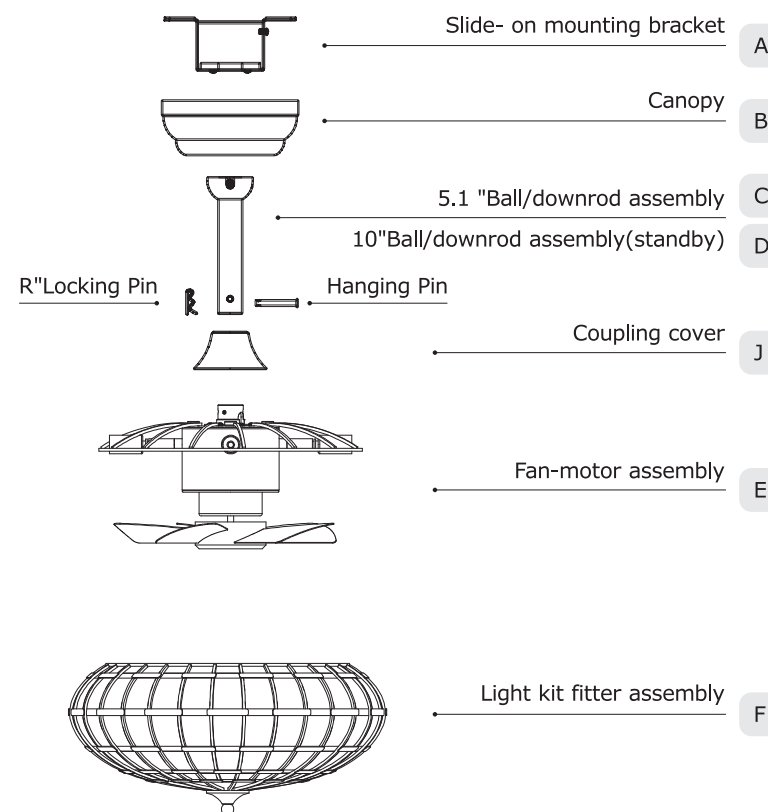
### components table

 <b>AA</b> Mounting screws x5	 <b>BB</b> Expansion bolts x2	 <b>CC</b> Plastic wire nut (not to scale) x3
--	--	---

<b>NOTE</b>	Hardware not shown to actual size.
-------------	------------------------------------

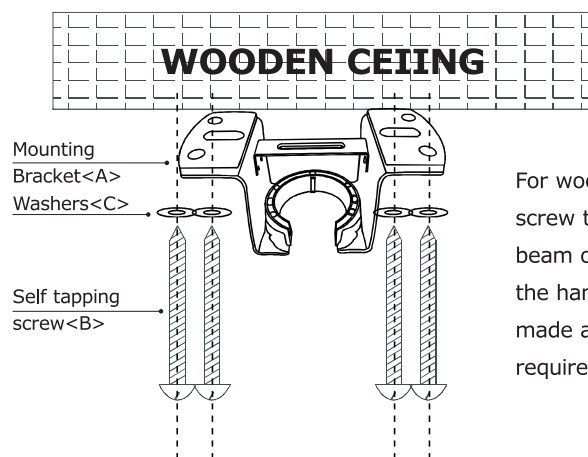
## PACKAGE CONTENTS

	
K Remote control (Transmitter) x1	L Remote control (receiver) x1



Please check whether above accessories are completed or not?Yes,and install.

## Installation of the hanging bracket (suspension part)



For wooden ceiling, use wood screw to drill on the wooden beam or the "junction box" to fix the hanging bracket (selection is made according to actual requirements of the customers)

### STEP 1 A-WOODEN CEILING

SWITCH OFF THE ELECTRICAL MAINS AT THE CIRCUIT BREAKER FUSE BOX.

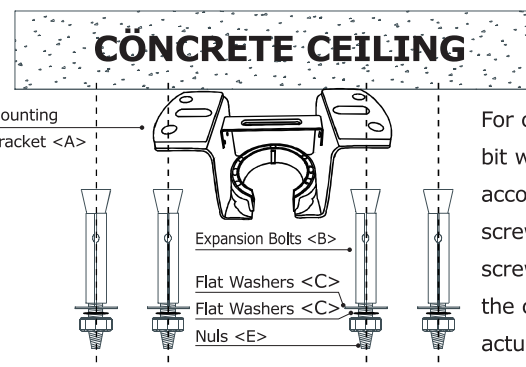
- 1) Use the Mounting Bracket (A) as a guide, mark the spots where the 4 Self Tapping Screws (B) will be drilled.
- 2) Remove the Mounting Bracket (A), drill 4 holes for 3MM diameter, install the mounting bracket onto wooden ceiling with the 4 Self Tapping Screws (B)&Washers(C)



**IMPORTANT : SCREWS MUST BE TIGHTENED TILL SNUG**

#### NOTE

According to the ceiling of different materials, use different screws to fix the hanging bracket. Don't fix the hanging bracket on the wood ceiling less than 12MM to prevent danger caused by loosening of screws. After the hanging bracket is completed, ensure that it can withstand the tension test of more than 68KG for safety.



For concrete ceiling, use the percussion bit with diameter 8mm to drill holes according to the length of expansion screws. Then use the attached expansion screws to fix the hanging bracket onto the ceiling (selection is made according to actual requirements of the customers).

### STEP 2 A-CONCRETE CEILING

SWITCH OFF THE ELECTRICAL MAINS AT THE CIRCUIT BREAKER FUSE BOX.

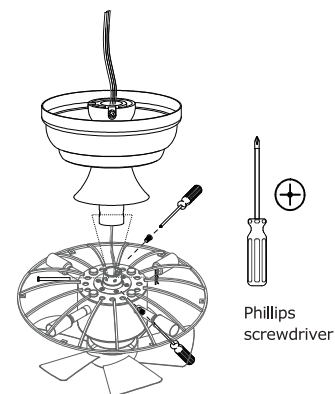
- 1) Use the Mounting Bracket (A) as a guide, mark the spots where the 4 Expansion Bolts (B) will be drilled.
- 2) Remove the Mounting Bracket (A), drill 4 holes and insert 4 Expansion Bolts (B) into the concrete ceiling, install the mounting bracket and secure with Flat Washers (C), Spring Washers (D) and Nuts (E).



**IMPORTANT : SCREWS & NUTS MUST BE TIGHTENED TILL SNUG**

## Install the hanging part of the ceiling fan.

### Install downrod assembly

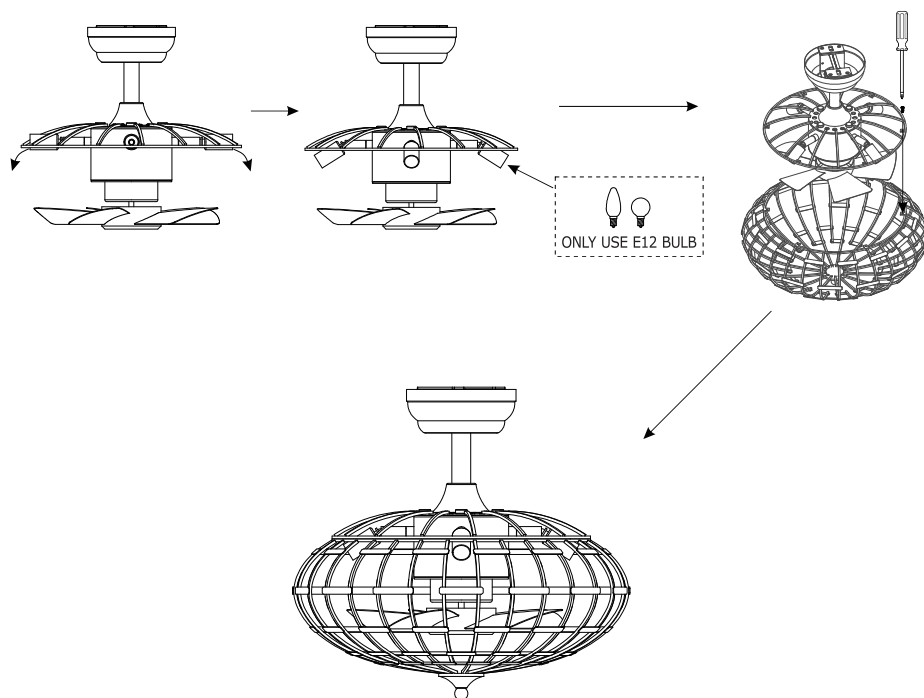


1. Thread the suspender through the suspended clock and coupling cover.
2. Then insert the tail of the suspender from the lifting head of the motor.
3. After the lateral pin is threaded out from the suspended head position, insert R type pin.
4. Tighten the lifting head screws.
5. Hang the fan of the hanging pipe into the hanger.

## Assembly - Attaching the Lights

### Install the crystal shade & bulb:

- ⚠ WARNING:** Allow the shatter resistant bowl to cool completely before removing.
- ⚠ CAUTION:** Make sure the power is off before attaching or removing the shatter resistant bowl.
- ⚠ CAUTION:** Do not over tighten the hex nut, overtightening the hex nut may cause the shatter resistant bowl to break.

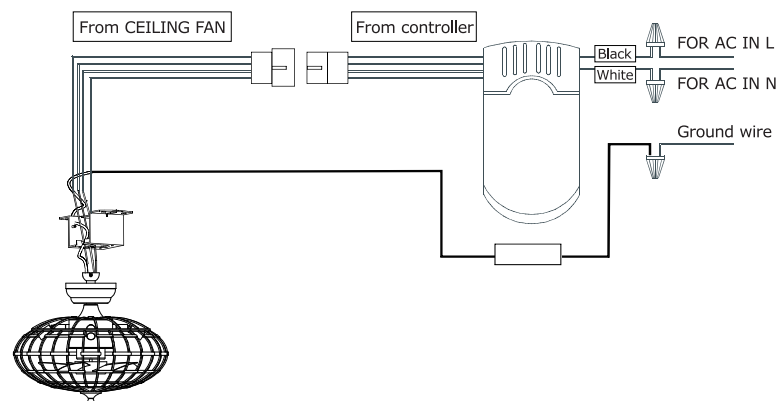


1. Break off the bulb mounting part slightly
2. Install the appropriate bulb in the specified position
3. Secure the fan and lampshade with the screws provided

## Assembly - Hanging the Fan(continued)

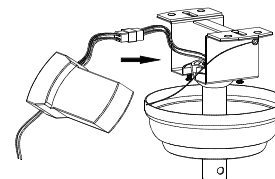
### Making the electrical connections

- ⚠ WARNING:** Each wire not supplied with this fan is designed to accept up to one 12-gauge house wire and two wires from the fan. If you have larger than 12-gauge house wiring or more than one house wire to connect to the fan wiring, consult an electrician for the proper size wire nuts to use.
- ⚠ WARNING:** Remove the rubber motor stops on the bottom of the fan before installing the blades or testing the motor.
- ⓘ IMPORTANT:** Use the plastic wire connectors(BB) supplied with your fan. Secure the connectors with electrical tape and ensure there are no loose strands or connections.

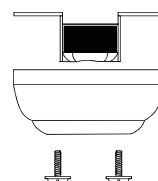


### Preparing for mounting

#### Install remote control



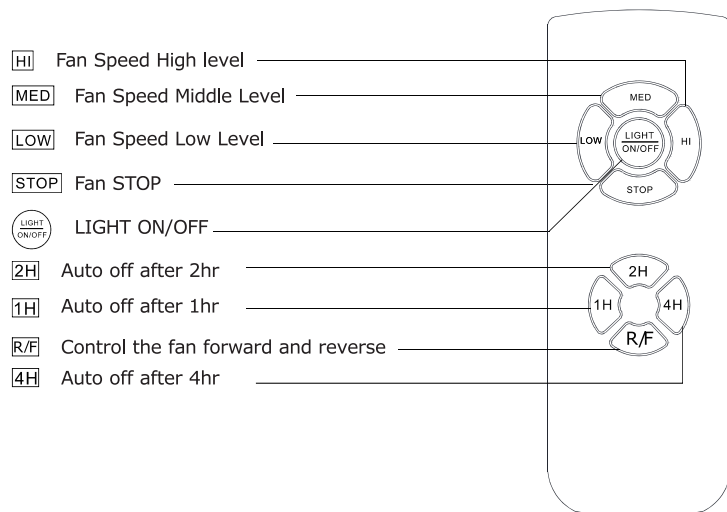
#### Preparing for mounting



1. Carefully push the canopy to the bottom of the mounting bracket, make two sliding holes aligned to the two prominent screws on the mounting bracket, and then turn clockwise until tight.
2. Push the canopy ring to the bottom of the canopy, slide the inner holes aligned to the two prominent screws on the mounting bracket again, and turn the canopy ring clockwise until tight.

- 1: Remove the mounting bracket from the canopy by loosening the two canopy screws located in the L shaped slots.
  - 2: Remove and save the two canopy screws in the round holes.
- This will enable you to remove the mounting bracket.

## Use of remote control



## Care and Cleaning



**WARNING:** Make sure the power is off before cleaning your fan.

- Because of the fan's natural movement, some connections may become loose. Check the support connections, brackets, and blade attachments twice a year. Make sure they are secure. It is not necessary to remove the fan from the ceiling.
- Clean your fan periodically to help maintain its new appearance over the years. Do not use water when cleaning, as this could damage the motor or the wood, or possibly cause an electric shock. Use only a soft brush or lint-free cloth to avoid scratching the finish. The plating is sealed with a lacquer to minimize discoloration or tarnishing.
- You can apply a light coat of furniture polish to the wood for additional protection and enhanced beauty. Cover small scratches with a light application of shoe polish.
- You do not need to oil your fan. The motor has permanently-lubricated sealed ball bearings.

## Troubleshooting

Problem	Solution
The fan will not start.	<ul style="list-style-type: none"> <li>• Check the main and branch circuit fuses or breakers.</li> <li>• Check the line wire connections to the fan and switch wire connections in the switch housing.</li> </ul>
	<ul style="list-style-type: none"> <li>• Ensure all motor housing screws are snug.</li> <li>• Ensure the screws that attach the fan blade bracket to the motor hub are tight.</li> <li>• Ensure the wire nut connections are not rattling against each other or the interior wall of the switch housing.</li> <li>• Allow a 24-hour "breaking in" period. Most noises associated with a new fan disappear during this time.</li> <li>• If you are using the Ceiling Fan light kit, ensure the screws securing the glassware are tight.</li> </ul> <p>Check that the light bulbs are also secure.</p> <ul style="list-style-type: none"> <li>• Ensure the canopy is a short distance from the ceiling. It should not touch the ceiling.</li> <li>• Ensure your outlet box is secure and rubber isolator pads were used between the mounting plate and outlet box.</li> </ul>
The fan wobbles.	<ul style="list-style-type: none"> <li>• Check that all blades and blade arm screws are secure.</li> <li>• Most fan wobble problems are caused when blade levels are unequal.</li> <li>• Check this level by selecting a point on the ceiling above the tip of the blades.</li> <li>• Measure from a point on the center of each blade to the point on the ceiling. Measure this distance. Rotate the fan until the next blade is positioned for measurement.</li> <li>• Repeat for each blade. Any measurement deviation should be within 1/8 in.</li> <li>• Run the fan for ten minutes. If the fan continues to wobble please contact Customer Service.</li> </ul>