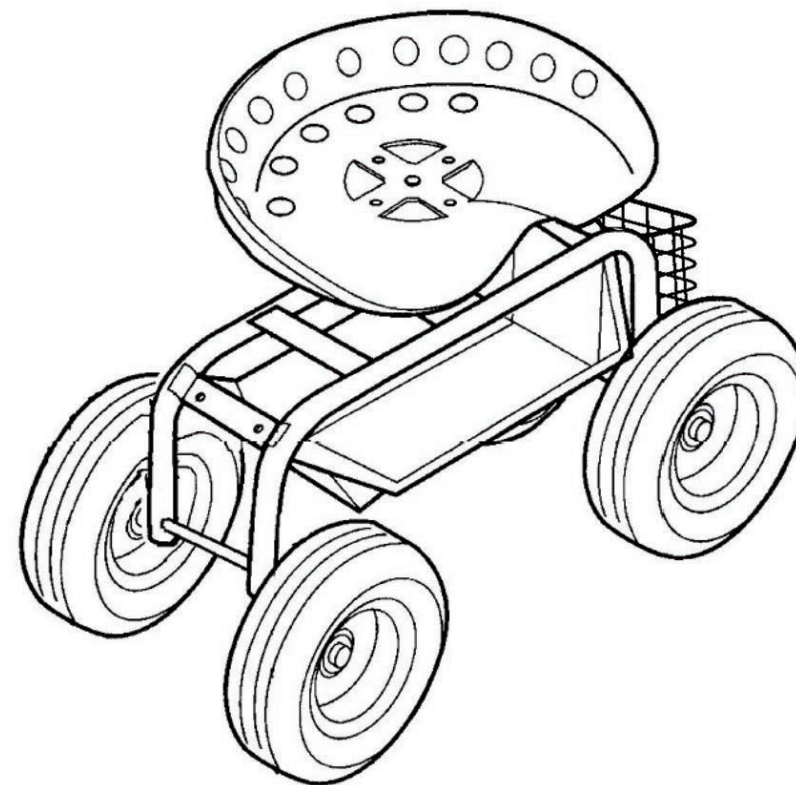




**COSTWAY®**

**COSTWAY**  
www.costway.com



**USER'S MANUAL**  
**Rolling Garden Workseat**  
**GT3449**

THIS INSTRUCTION BOOKLET CONTAINS **IMPORTANT** SAFETY INFORMATION. PLEASE READ AND KEEP FOR FUTURE REFERENCE.

**Please give us a chance to make it right and do better!**

Contact our friendly customer service department for help first.

Replacements for missing or damaged parts will be shipped ASAP!

**Follow Costway**

Visit us: [www.costway.com](http://www.costway.com)



# Contact Us!

## Do NOT return this item.

Contact our friendly customer service department for help first.



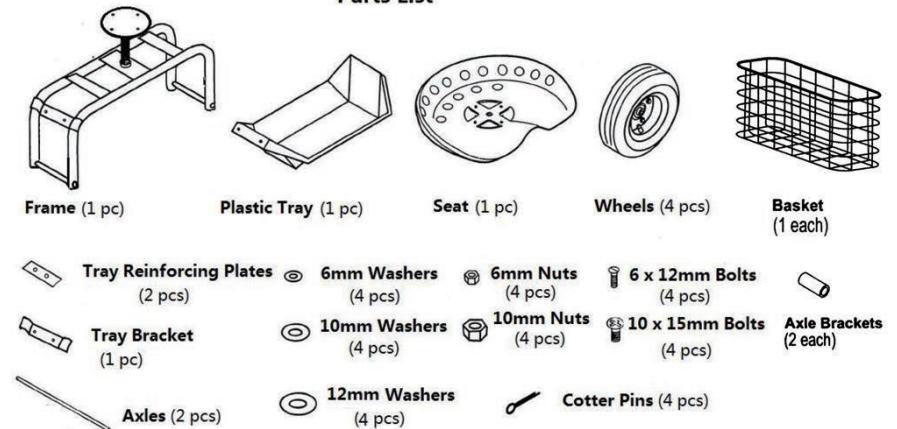
## Before You Start

- ⚠ Please read all instructions carefully.
- ⚠ Retain instructions for future reference.
- ⚠ Separate and count all parts and hardware.
- ⚠ Read through each step carefully and follow the proper order.
- ⚠ We recommend that, where possible, all items are assembled near to the area in which they will be placed in use, to avoid moving the product unnecessarily once assembled.
- ⚠ Always place the product on a flat, steady and stable surface.
- ⚠ Keep all small parts and packaging materials for this product away from babies and children as they potentially pose a serious choking hazard.

### 1. Assembly instructions

This product requires assembly. Please carefully remove all pasts and make sure you have all parts before beginning assembly (refer to the Parts List of the manual). Read these instructions completely before beginning assembly. Tools required for assembly are a straight slot screwdriver and a small wrench.

#### Parts List



### 2- How to assembly:

#### Step 1:

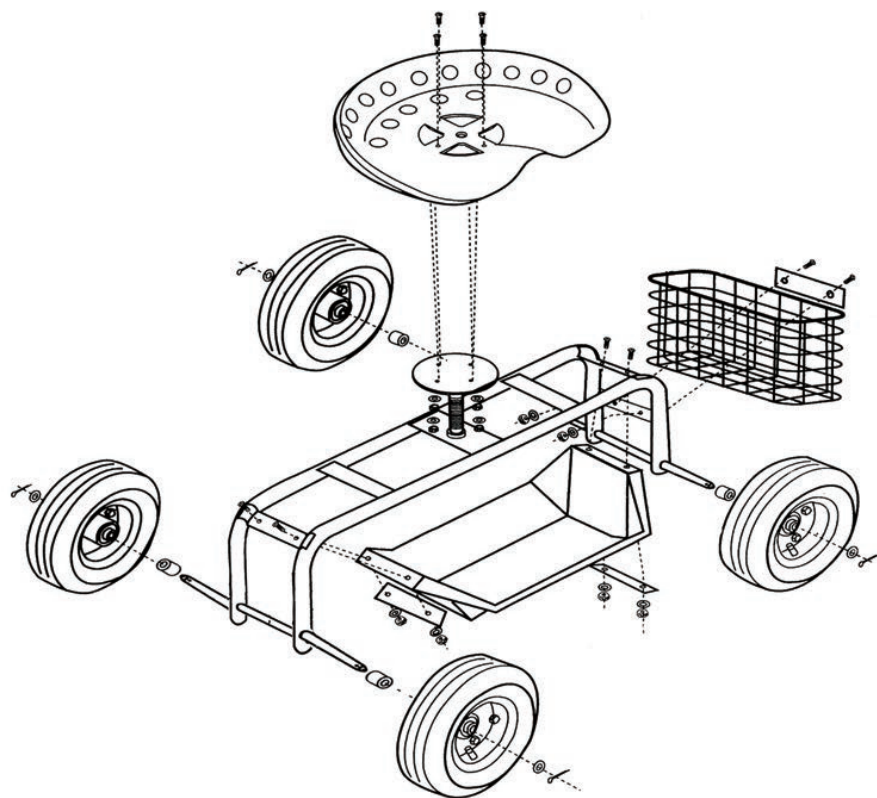
- Place the frame as shown in the figure 1.
- Attach Plastic tray to the tray brackets using the tray reinforcing plates, 4 pcs 6 x 12mm Bolts, 6mm nuts washers and 6mm nuts

#### Step 2

Slide axles into the frame. Slide a 12mm Washer onto each Axles, then mount wheels (sides with bolt head facing out) onto all Axles, later slide another 12mm washer onto the Axle again, finally secure with a cotter pin through the ore-drilled on all ends of the Axles. Make sure to spread the cotter Pins open.

#### Step 3

Attach the seat to seat post with 4 pcs 10 x 15mm bolts, 10mm washers and 10mm Nuts. Then you can adjust the seat height by rotating seat.



**Figure 1**

**Safety instruction:**

This is not a toy not for use by children

- Do not use on clines, work seat may tip
- Do not load your seat with more than 150 kgs
- Do not load plastic tray with more than 2.3 kgs
- Do not operate if any part is damaged or broken.

**Welcome to visit our website and purchase our quality products!**

Your suggestions and comments for COSTWAY are really important to us!

We sincerely solicit you to go back to our shop and leave a good rating in just a simple click. It would be quite encouraging if you could kindly do so like below:

★★★★★ Great products so far

February 24, 2019

Great products so far. Fast delivery, easy setup, and working without any issues.

**With your inspiring rating, COSTWAY will be more consistent to offer you EASY SHOPPING EXPERIENCE, GOOD PRODUCTS and EFFICIENT SERVICE!**

US office: Fontana, California

UK office: Ipswich



- \* Reward Points
- \* Exclusive Customer Service
- \* Personalized Recommendations
- \* Permanent Shopping Cart
- \* Order History

*5 Star Rating*



**We would like to extend our heartfelt thanks to all of our customers for taking time to assemble this product and giving us valuable feedbacks.**

*THANK  
you*  
☺