



COSTWAY

COSTWAY



USER'S MANUAL
Multi-function Blender
EP24954US

THIS INSTRUCTION BOOKLET CONTAINS **IMPORTANT** SAFETY INFORMATION. PLEASE READ AND KEEP FOR FUTURE REFERENCE.

Please give us a chance to make it right and do better!

Contact our friendly customer service department for help first.

Replacements for missing or damaged parts will be shipped ASAP!

Follow Costway



Contact Us!

Do NOT return this item.

Contact our friendly customer service department for help first.



Before You Start

- ⚠ Please read all instructions carefully.
- ⚠ Retain instructions for future reference.
- ⚠ Separate and count all parts and hardware.
- ⚠ Read through each step carefully and follow the proper order.
- ⚠ We recommend that, where possible, all items are assembled near to the area in which they will be placed in use, to avoid moving the product unnecessarily once assembled.
- ⚠ Always place the product on a flat, steady and stable surface.
- ⚠ Keep all small parts and packaging materials for this product away from babies and children as they potentially pose a serious choking hazard.

To customer

Thank you for purchasing our company's heating multi-function blender , To make sure you can use this product properly and keep it well maintained, please read carefully and save well these instructions, hope it is helpful for you.

When you use this appliance, if you can't operate it normally or have query please refer to these instructions ,if you're not following these instructions and cause appliance failed or damaged, we shall not responsible for it.

Content

Safety operation tips.....	04-06
Technical parameters.....	07
Part name& attachment.....	08
Appliance character and assembly	09
Appliance operation instruction.....	10-14
Safety guards tips.....	15
Care and maintenance.....	16
Failure analysis and solution.....	17

Safety operation tips

Below items are built based on appliance under safe and normal running to avoid an incident and unnecessary loss. Expect appliance user follow these instructions strictly. According to incident of injury severity and emergency level, Safety guards tips are divided into the following types:



Warning: due to wrong operation cause potential severe personal injury or death incident.



Careful : due to wrong operation caused potential personal injury or equipment damage incident.



This symbol means danger、warning, there is detailed content on the photo or nearby it.



This symbol means prohibition. , there're detailed content on the photo or nearby.



This symbol means caution. , there're detailed content on the photo or nearby.



Warning



Do not put motor device (BASE) ,hot jar, icy jar, grinder jar under tap water to rinse. May cause appliance damage or electric shock, and/or injury.



Plug the power cord into outlet correctly.

Risk of fire ,electric shock, and/or personal injury.

Safety operation tips



Do not unplug, plug power cord by moist hand, moist towel.

Avoid electric shock, injury incident .



Do not strain, pull or use the power cord in any other bad manner. Avoid fire caused by electric shock or electric arc.



If the power cord is damaged, replacement must be done by professional technician of our manufacturer or warranty service department.

May cause fire, electric shock etc., personal injury incident. If any abnormal situation occurs, please contact warranty service station.



Make sure the outlet and power cord plug are normal before use the appliance.

Do not operate any appliance with a damaged cord or wobble plug. May cause fire, electric shock etc., or personal injury incident.



Careful



Place the appliance on a flat surface with safety when using.

May cause damage or malfunction.



Do not plug cord into outlet in case of indoor gas leakage, such as coal gas, natural gas, and other combustible gases. Open the window to maintain good ventilation and then plug in the power cord.

May cause personal injury or appliance malfunction.



Do not move the appliance while it is running.

May cause personal injury or appliance function failure.



Please do not crash appliance or drop it on floor seriously.

May cause personal injury or appliance function failure.

Safety operation tips



Unplug from outlet when not in use.

Avoid electric shock, current leakage.



Switch off the appliance power immediately if you notice abnormal sound, peculiar smell, overheating, smoke, etc. when using the device. Please send appliance to warranty service center to repair.

Avoid electric shock, current leakage, fire happening.



Appliance weight is approximate 5 kg(11 lbs), be careful when moving it.

If move appliance by one hand, appliance base may slip on floor and cause function failure or personal injury.



Power outlet have to be set at the place where children can't reach. Unplug from outlet when not in use.

Can avoid electric shock of children or fire.



This product is for household use only.



Do not extend extra length of power cord.



Be careful when remove out blades assembly, empty ingredients jar and clean.

Avoid risk of heating Circuit Breakers mistake reset, appliance can't be supplied power by external switch device. For example, Timer or connected to close/open circuit that by common part timing control.

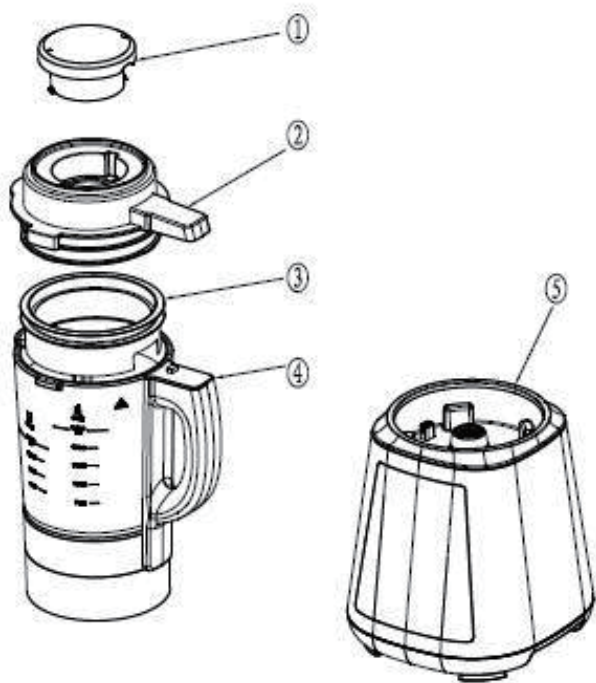


Switch off power source and unplug from outlet before replace accessories or touch removable parts.

Technical parameter

Model	BL3398	Rated voltage	120V~
Rated power	Blender 1200w Heating 800w	Rated frequency	60Hz

Part name and accessory



Product Accessories:

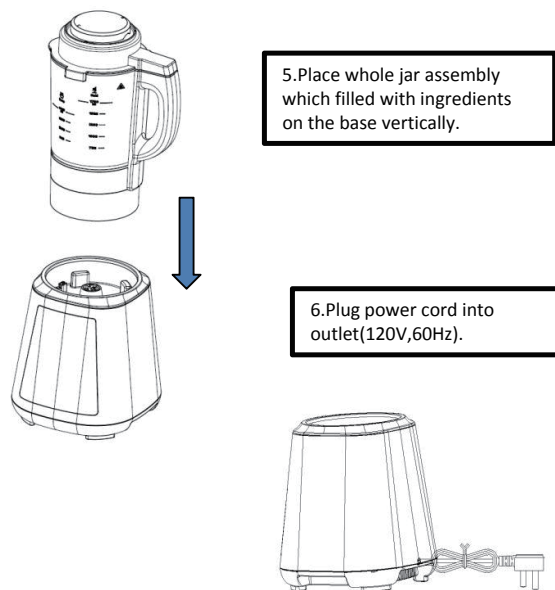
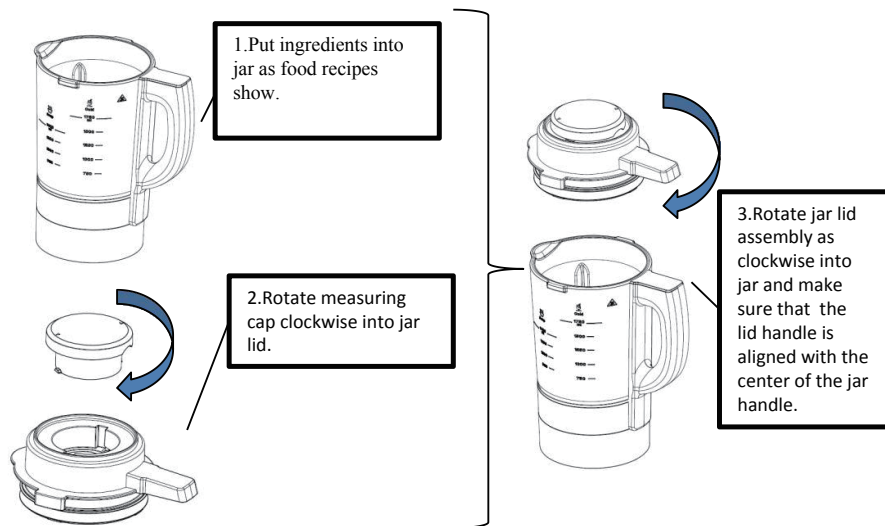
1. Small measuring cup
2. Jar lid
3. Jar lid seal ring
4. Soup jar assembly
5. Base

Product character and assembly

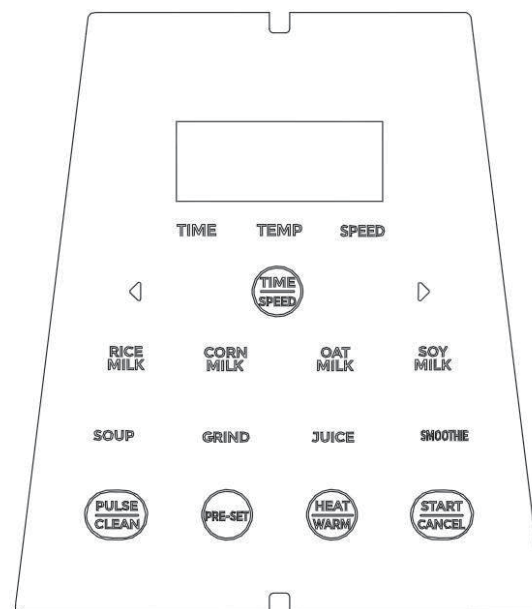
Part name	Product character and assembly
Small measuring cup	Can be used as a measuring cup. Insert the measuring cup to center hole of jar lid, rotated it clockwise till tightened; can open the cup lid and add in other food when blender is working.
Jar lid	Seal juice and soup jar, do not open its lid when blender is working. Or else, the juice ,hot soup will overflow and appliance will stop.
Jar lid seal ring	Seal jar ,avoid overflow of fruit & vegetable juice, hot soup, rice paste, etc.
Soup jar assembly	Apply to make puree, soy milk, corn juice, Nourish rice paste.
Base	Power driver part: 1.go through coupler on the base transmit signal and power to heating plate to realize steam & brew. 2.power transmitting through the driving wheel on base and the gear on the jar, driving blades to run and blend the food.

Before use this product, small measuring cup, jar lid and soup jar,pls clean them with warm water and dry thoroughly.

Operation Instruction (I . Connect to power source)



Operation Instruction (II . Interface operation instruction)



Interface operation includes
Three function area:
 1. Digital LED display area
 2. Indicator display area
 3. Touch-key function option
 DIY setup and power
 START/CANCEL area.

II (A) .Interface operation instruction(Used as a hot jar)

#	Display type	Touch able (NA or Yes)	Display status before power ON (when used as a hot jar)	Display status after power ON (when used as a hot jar)
①	Digital LED cool white display	NA	Display “--”	1.Processing as certain function option ,display as scroller of rectangle digital frame. when measured the liquid Temperature reach to boiled, display as count down. 2.Processing as “PRE SET ”option, display as timing count down. 3.Processsing as “HEAT/WARM” option ,display as scroller, when reach to target Temperature set, display the liquid actual Temperature directly .

②	LED cool white backlight display	NA	OFF	1.Press “PRE-SET”,“TIME” flash. Others display off. 2.First press “HEAT/WARM”“ TEMP” flash, 2nd press “HEAT/WARM”, "Time" flash. 3. If no any operation on “HEAT/WARM” “Timer”. all LEDs off at this area.
③	LED cool white backlight display (START/CANCEL Red light display)	Yes	Default “ RICE MILK” and “START/CANCEL ” flash, at this area, Option “RICE MILK”, CORN MILK”, OAT MILK”, SOY MILK” GRIND” “SOUP “HEAT/WARM” “TIME/SPEED” “◀ ” “▶ ” off, others key light constant on .	1.Interface under default condition: make example of“ RICE MILK” flash, touch “PRE-SET” ,and then “Time” “◀ ” “▶ ” flash, touch “◀ ” or “▶ ” adjust time (default 1 hour,15 minutes per each press, press and hold touchable screen button can fast adjust; you can also press “START/CANCEL ” ,processing as default Time). At this moment, other function options light off, only “RICE MILK”“ PRE-SET”“ TIME” “START/CANCEL ” “PULSE/CLEAN” light on. others function option are similar logic and operation. 2.Interface under default condition: make example of“ RICE MILK” flash, touch“ HEAT/WARM” ,and then “Temp”,“ ◀ ” “ ▶ ” flash, touch “ ◀ ” or“ ▶ ” adjust heating Temp increase or reduce(default set 60℃ ,Temp adjust range 40℃ -100℃ , touching increase or reduce 1℃ per Time, touching and hold ,Temp will scrolling increase fast. If you don’t want to set up time, touch“ START/CANCEL ” directly, processing as default set time. if you need to set up time, touch again “HEAT/WARM”, and “Time” “ ◀ ” “ ▶ ” flash, touch “ ◀ ” or“ ▶ ” to set warm keep time. (digital LED default display 01:00,Time adjust range 01:00-12:00,touch increase or reduce 15 minutes per time(touch and hold, time scrolling increased fast),touch “START/CANCEL ” all of others light off ,but “HEAT/WARM”“ START/CANCEL ” constant light on. other function options are similar logic and operation. 3.Interface under default condition: make example of“ RICE MILK” flash, not touch“ HEAT/WARM” and“ PRE-SET” ,“ START/CANCEL ” start flash ,others function option light on . touch“ START/CANCEL ” ,others function option light off but “RICE MILK”“ START/CANCEL ” “PULSE/CLEAN” light on. Now appliance processing as default set. If need other function option, find related touchable screen button ,touch and activate it and touch “START/CANCEL ” for confirmation. appliance will work as program set. Remark: When appliance is processing, but you want to return to standby condition, touch "START/CANCEL " to go back.

II (B):interface operation list(when used as an icy jar)

#	Display type	Touchable(NA or Yes)	Display status before power ON (when used as an icy jar)	Display status after power ON (when used as an icy jar)
①	Digital LED cool white display	NA	Display “1:00”	Display as time count down.
②	LED cool white backlight display	NA	OFF	<p>1.Press “TIME/SPEED”, “SPEED” or “TIME” flash. others light off.</p> <p>2.If not press “TIME/SPEED”, all of lights off.</p>
③	LED cool white backlight display (START/CANCEL Red light display)	Yes	<p>Default “ JUICE ” and “START/CANCEL ” flash, at this area, all of others LED constant light on ,option "RICE MILK" “CORN MILK” “OAT MILK ” “SOY MILK” “SOUP” “PRE-SET” “HEAT/WARM” “◀ ” “▶ ” light off and not available.</p>	<p>1.Interface under default condition: make example of“ JUICE” flash, if not touch“ TIME/SPEED ” ,Only “START/CANCEL ” flash ,others function option light on . touch “START/CANCEL ” ,others function option light off but “Juice” “START/CANCEL ” “PULSE/CLEAN” light on.</p> <p>If need other function option, find related touchable screen button ,touch and activate it and touch “START/CANCEL ” for confirmation. appliance will work as program set.</p> <p>2.Interface under default condition: make example “Juice” flash, 1st touch “TIME/SPEED” , and then option “START/CANCEL ” , “TIME/SPEED” , “Time” , “◀ ” “▶ ” flash, others function option constant light on, touch “◀ ” “▶ ” adjust processing Time (maximum adjust range 1-7 minutes, Time increase or reduce by 10s per Time, touch and hold scrolling increase or reduce fast).</p> <p>if you don’t want to adjust time, touch “START/CANCEL ” , appliance processing as default time of 3 minutes and speed gear 3 . At this moment, “START/CANCEL ” constant light on, other function options light off.</p> <p>if adjust time done, need to set up speed gear, touch again “TIME/SPEED” , “START/CANCEL ” and “Time/speed” “speed” “◀ ” “▶ ” flash, other function options light off. And you can go through “◀ ” “▶ ” as default gear 4 or acceleration gear (speed range:1-9,H, total 10 gears),touch again “◀ ” “▶ ” ,appliance processing as time count down you set and speed until to end.</p> <p>Remark: When appliance is processing, but you want to return to standby condition, touch "START/CANCEL " to go back.</p>

II (C):interface operation list(when used as a grinder jar)

#	Display type	Touc hable(N A or Yes)	Display status before power ON (when used as a grinder jar)	Display status after power ON (when used as a grinder jar)
①	Digital LED cool white display	NA	Display “1: 30”	Display as time count down.
②	LED cool white backlight display	NA	OFF	1.Press “TIME/SPEED”, “Time” flash. others light off. 2.If not press “TIME/SPEED”, all of light off.
③	LED cool white backlight display (START/ CANCEL Red backlight display)	Yes	Default “GRIND” and “ START/CANCEL ” flash, other function keys light off and not available.	1.Interface under default condition: make example of “GRIND” flash, if not touch“ TIME/SPEED” ,only“ START/ CANCEL ” flash ,others function option light off and not available. touch“ START/CANCEL ” , appliance processing as the top gear H speed, and count down as 1:30 till to end. 2.Interface under default condition: make example of “GRIND” flash, touch“ TIME/SPEED” ,and then “START/CANCEL ” “ TIME/SPEED” “◀ ” “ ▶ ” flash, others function option light off and not available; touch “◀ ” “ ▶ ” adjust processing time ,max adjust 1:30 min, Time increase or reduce by 5s per time, when time set done and then touch “START/CANCEL ” ,appliance will work as the top gear speed and count down till to end. Remark: 1.When appliance is processing, but you want to return to standby condition, touch "START/CANCEL ” to go back. 2. The food'weight in grinder shouldn't over 100g.

Safeguards tips

- The heating plate of the appliance is equipped with a thermostat, if overheated, the appliance will stop working until it cools down. If you want to restart appliance or add brewing Time, you need to unplug power cord and cool down the appliance to ambient Temperature.
- Although appliance with some protection device. heating without any food or liquid is still not allowed.
- Do not touch hot soup jar when appliance is processing, avoid heat injury by hi-Temp of jar and jar base.
- When use hot soup jar, make sure the jar lid closed well and check air outlet whether is clean.
- Follow the jar limited volume(not exceed marked max line) for food processing, especially the use of hot soup jar assembly, the liquid volume should not exceed 1.4L, and the brewed soybean milk should not exceed 1L.
- Appliance blades are sharp, be careful when cleaning.

Care and maintenance

1. Switch off power and unplug cord from power outlet before clean.
2. Clean appliance in Time after use.
3. Do not immerse appliance or wash in water or any other liquid. Can wipe the base surface with a damp cloth and dry thoroughly.
4. Hot soup jar: Pour lukewarm water (half juice jar volume) and 2 drops of washing-up liquid into the blender jar. Close tightly the jar lid and small measuring cup. Press Pulse/Clean button and clean automatically.
5. Jar lid and small measuring cup: separate it as two parts, clean by warm dish soap water and rinse it with clean water and dry thoroughly.
6. After cleaning, do not twist seal lid tightly, make air circulation, avoid smell existing in jar. Store under dry condition and no UV light raying.
7. Make sure appliance is clean and dry before store.

Warning:

- 1、 Do not place jar lid and small measuring cup into dishwasher.
- 2、 Do not place jars and others part into microwave oven.
- 3、 Appliance continuous operation for 7 minutes and turned off for 5 minutes as 1 work Time, can continuous last 2 work Times. after 2 work Times , appliance must cool down to ambient Temp and then can continue operating.
- 4、 Do not exceed 1 hour for heating operation when use hot soup jar assembly.

Troubleshooting

Failure type	Root cause	Solution
Appliance Can't start and work after switching on power.	1. Icy drink jar/hot soup jar/grinder jar not placed on the base. 2. Switch on power, display shows E0, can't start.	1. Bottom trigger rod does not contact safety switch of base or safety switch damaged. 2. Check jar lid whether rotated to the right position or over position. 2b. Check jar lid whether deformed cause magnet far away from spring tube. 2c. Check the jar lid magnet whether failed or fall off.
Appliance has bad smell when start blending.	It's normal because new motor at initial working .	If used for several Times, smelly still exists, contact customer service center to get support.
Noise	1. Due to appliance is high power and it's normal when operating. 2. Check ingredients load and size.	1. When blending noise may not improved, but no need to worry about. 2. Switch off power and remove some of ingredients to reduce load
Blending stopped/ can't heat	1. Check power cord whether its plugged into outlet well. 2. Ingredients overload. 3. Overheat protection from motor Temp control device. 4. Kick Temp control device protected. 5. Cable terminal dropped or crack on heat plate.	1. Plug power cord well again. 2. Switch off power and remove some of ingredients to reduce load. 3. Turn off for 30-45 minutes, cool down appliance to ambient Temp and continue operating again.

Remark: above are normal troubleshooting, for other fails or query, please contact our company customer service department or send appliance to the repair station which we appointed. Do not disassemble and repair appliance by yourself.

Welcome to visit our website and purchase our quality products!

With your inspiring rating, COSTWAY will be more consistent to offer you
EASY SHOPPING EXPERIENCE, GOOD PRODUCTS and EFFICIENT SERVICE!

US office: Fontana, California

UK office: Ipswich



- * Reward Points
- * Exclusive Customer Service
- * Personalized Recommendations
- * Permanent Shopping Cart
- * Order History

5 Star Rating



We would like to extend our heartfelt thanks to
all of our customers for taking time to assemble
this product and giving us valuable feedbacks.

