

## **USER'S MANUAL**

### **Kids Ride On Forklift TQ10035**

THIS INSTRUCTION BOOKLET CONTAINS **IMPORTANT** SAFETY INFORMATION. PLEASE READ AND KEEP FOR FUTURE REFERENCE.

**Please give us a chance to make it right and do better!**

Contact our friendly customer service department for help first.

Replacements for missing or damaged parts will be shipped ASAP!

**Follow Costway**



# Contact Us!

## **Do NOT return this item.**

Contact our friendly customer service department for help first.



# Before You Start

Please read all instructions carefully and keep it for future reference.

### **Warnings:**

**Attention!** Use it with protective equipment.

**Attention!** Not use it in the traffic.

**Attention!** The product is not suitable for the children under 3 years.

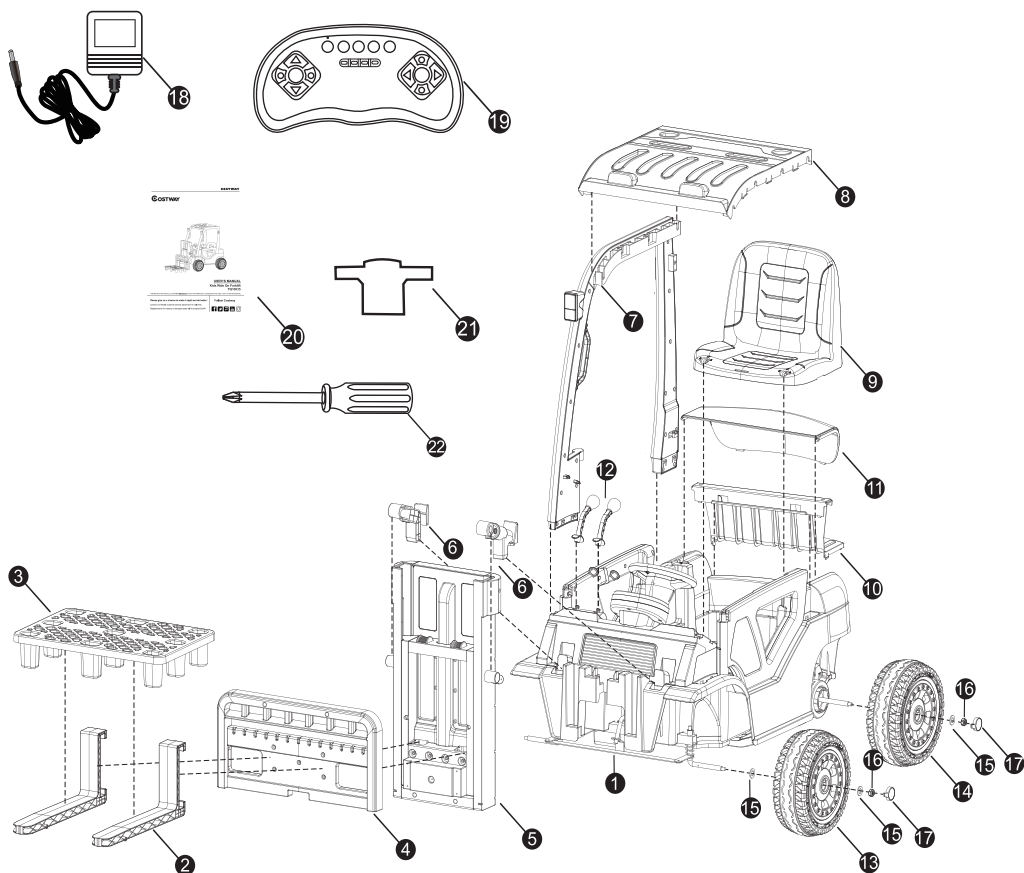
### **General Warnings:**

- ⚠ The product must be installed and used under the supervision of an adult.
- ⚠ Read through each step carefully and follow the proper order.
- ⚠ Remove all packaging, separate and count all parts and hardware.
- ⚠ Please ensure that all parts are correctly installed, incorrect installation can lead to a danger.
- ⚠ We recommend that, where possible, all items are assembled near to the area in which they will be placed in use, to avoid moving the product unnecessarily once assembled.
- ⚠ Ensure a secure surface during construction, and place the product always on a flat, steady and stable surface.
- ⚠ Please use the product carefully, as the product requires great skill, avoid accidents by the user or others, by fall or collision.
- ⚠ Please wear suitable protective equipment during use, e.g. protective helmet, gloves, knee pads, elbow pads etc.



Please read the instructions carefully before use. The manual and packing box contain important information. Please keep them for future reference. Children's safety may be affected if the instructions are not followed. In order to improve the product and configuration, we may change some of the structure, appearance, packaging, assembly and function of the product without notice. If there is any difference between the manual and the real object, please refer to the real object, please understand!

## Parts drawing

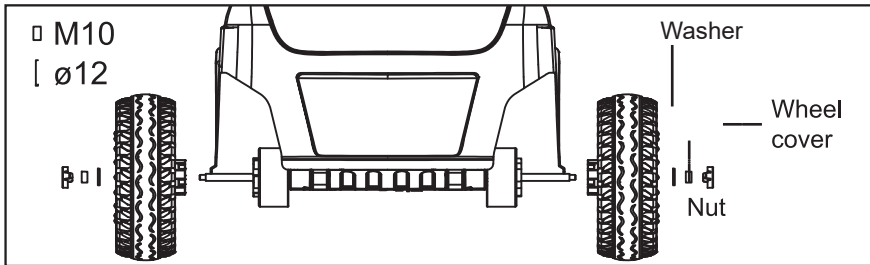


PART NO	PART NAME	NUMBER	PART NO	PART NAME	NUMBER
1	Body	1 pc	12	Handle	1 pair
2	Front fork	1 pair	13	Front wheel	2 pcs
3	Tray	1 pc	14	Rear wheel	2 pcs
4	Front fork seat	1 pc	15	Washer	6 pcs
5	Front fork lifting without connecting piece	1 pc	16	Nut	4 pcs
6	Front fork link	1 pair	17	Wheel cover	4 pcs
7	Support frame (optional)	1 pair	18	Charger	1 pc
8	Ceiling	1 pc	19	Remote control	1 pc
9	Seat	1 pc	20	Instructions	1 pc
10	Boot seat	1 pc	21	Wrench	2 pcs
11	Boot cover	1 pc	22	Screwdriver	1 pc

## Product specification parameters

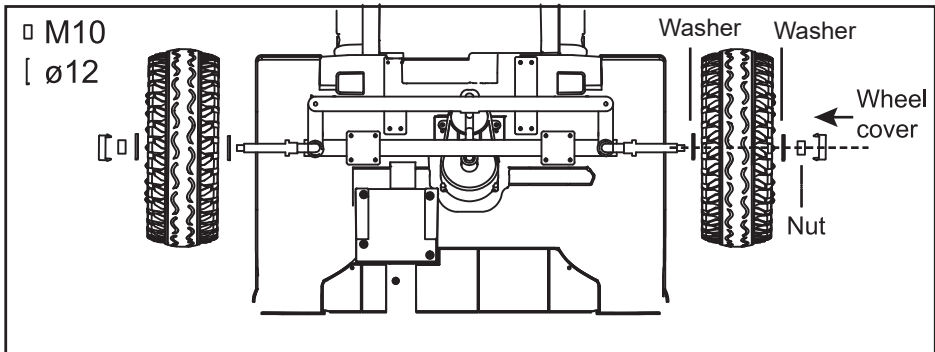
Battery	12V7AH
Electric machinery	Drive 12V/40W*2      To turn to 12V/12W*1
Age of use	37-95 Months
Maximum load	66 LBS
Dimensions	57.5" x 24.8" x 39.5"
Speed	2-6 km / h
Usage time	After full charge (about 8-12 hours), use for 1-2 hours continuously
Charger	input AC 100-240V output DC 12V-1000mA
Fuse	Self reset fuse

## Installation instructions



### 1. Install the rear wheel

Install the rear drive wheel and washer on the left and right sides of the rear axle, tighten the nut, and clip the small wheel cover into the shaft hole.



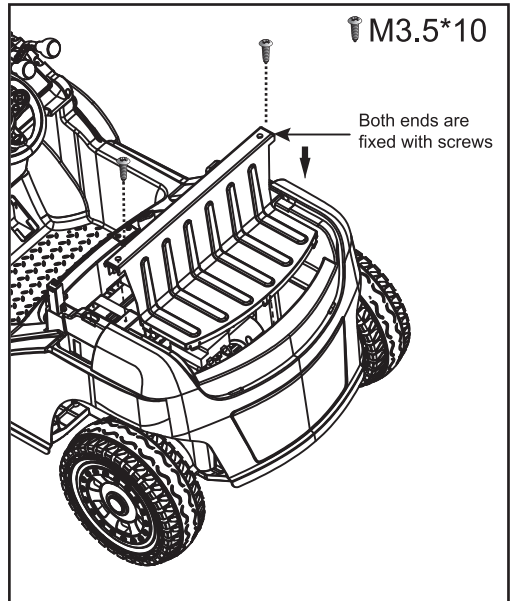
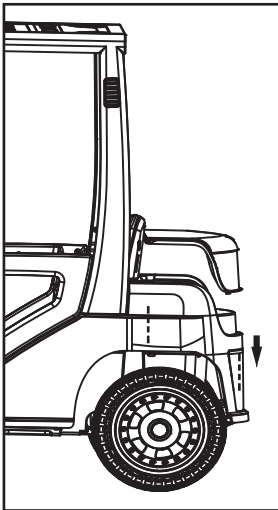
### 2. Install the front wheel

a. Install a washer and a front wheel on each side of the front axle.

b. After a washer is installed on the outer side of the front wheel, tighten the nut and clip the small wheel cover into the shaft hole.

### 3. Install the trunk bottom plate

First, insert the trunk bottom plate into the rear of the body, and then lock a screw at both ends of the beam to fix it.



### 4. Install the boot cover

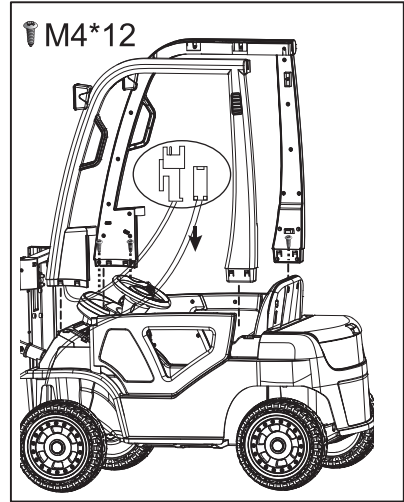
Insert the columns at the left and right ends of the front of the trunk cover into the holes on both sides of the rear of the vehicle body respectively (after inserting one side, lift the middle position of the trunk cover, and then insert it into the other side)

5. Install the roof support frame

(applicable to the configuration with ceiling)

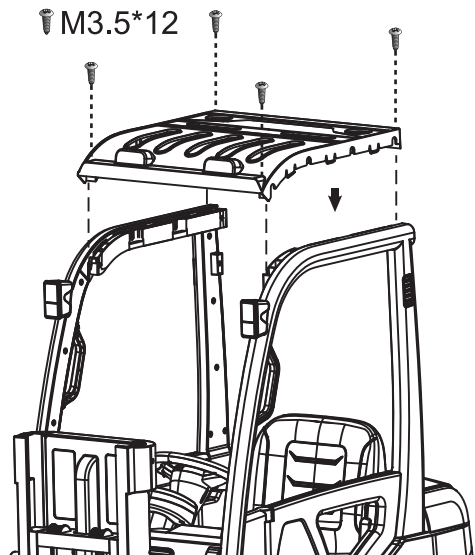
a. Connect the connector at the bottom of the support frame with the connector in the body hole, and then withdraw the redundant wire into the body (without pressing the wire).

b. Insert the left and right support frames (chimney decoration / rear tailstock) into the body holes from top to bottom, and then tighten the screws.

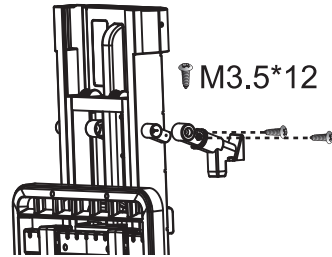


6. Install the ceiling

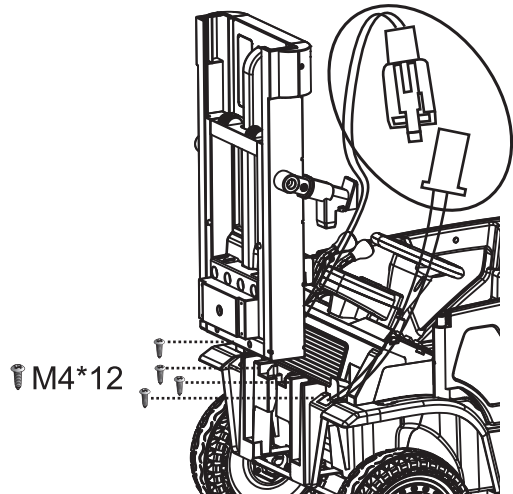
Insert the ceiling into the left and right support frame holes from top to bottom and tighten the screws



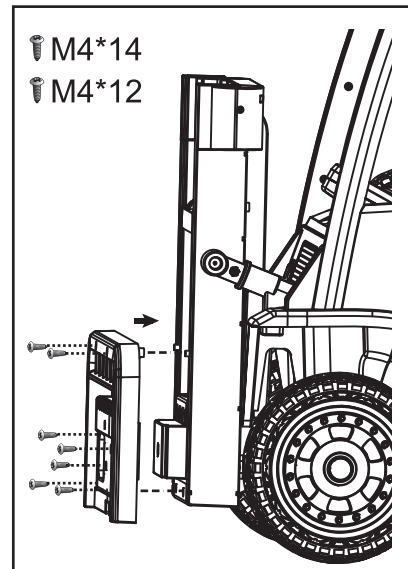
7. Install the left and right lifting connectors, install the lifting side cover from left to right, and fix them with screws



8. Install the front fork lifting assembly. Insert the lifting assembly of the front fork into the fixing hole in the front section of the body from top to bottom, and fix it with screws.

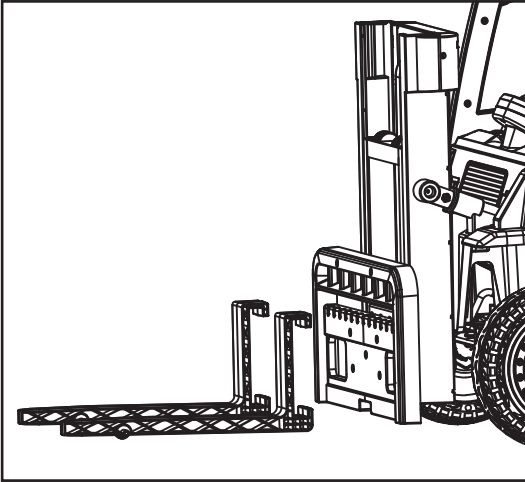


9. Install the front fork guardrail, put the front fork guardrail into the central box of the front fork lifting assembly from front to back, and fix it with screws.



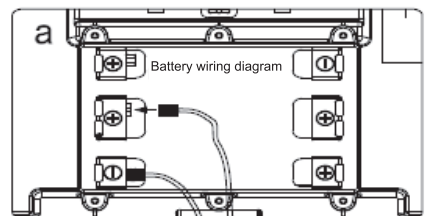
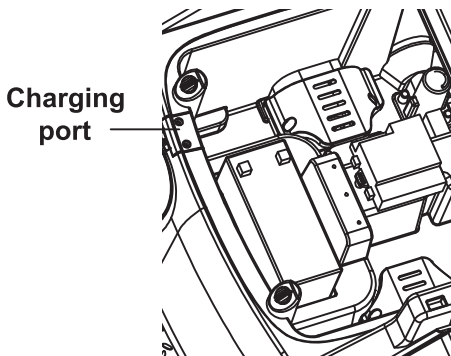
## 10. Install the front fork

Firstly, the front fork hook is corresponding to the bottom hole of the center of the front fork guardrail. Secondly, the lower end of the front fork hook is inserted into the bottom of the center of the front fork guardrail. Then, the upper end of the front fork hook is hung into the upper end of the front fork guardrail. After the front fork enters the guardrail, the front fork can move downward to the left and right.



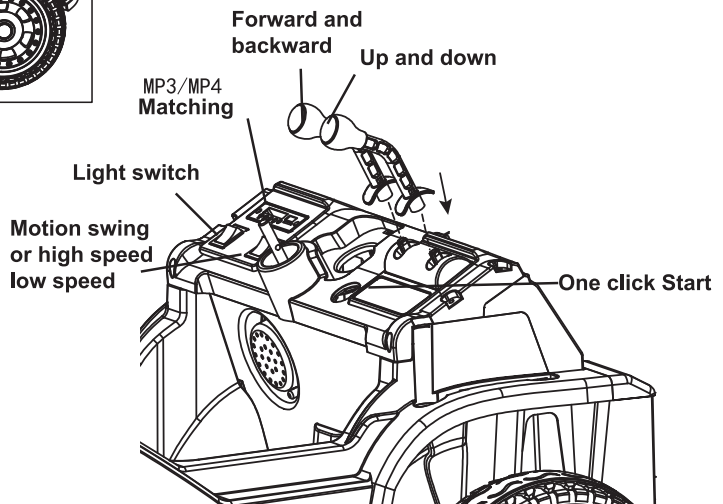
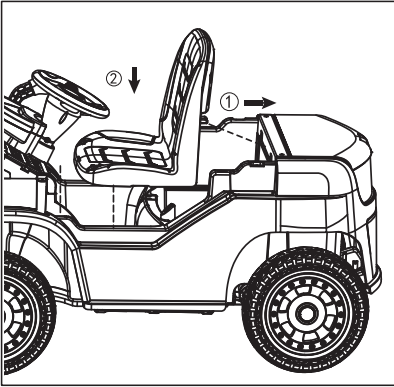
## 11. Battery bin circuit connection

Connect the power cord plug with the battery plug, please note that red is connected to red and black is connected to black.



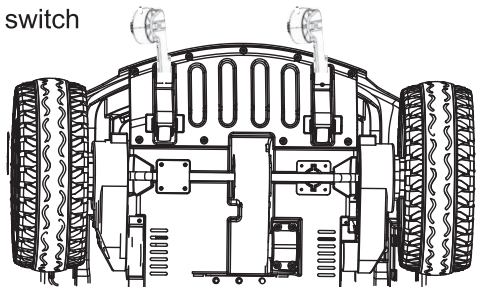
## 12. Install the seat

Insert the seat back clasp into the trunk crossbeam hole, and then turn the red knobs on both sides of the front section of the seat to the locking position (as shown in the figure)



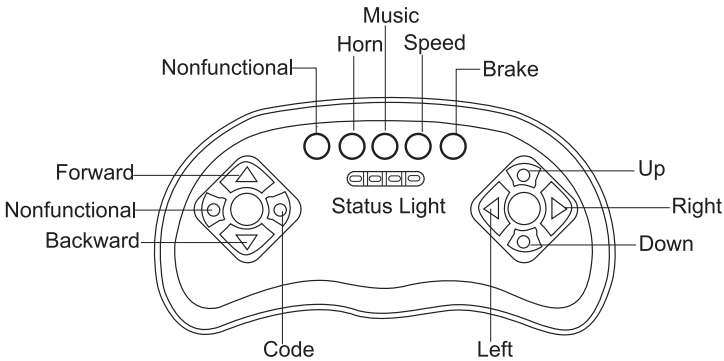
## 13. Install the handle

Align the center hole at the bottom of the handle with the switch handle, and insert it into the switch handle from top to bottom





## Use the Remote Controller



### Build connection

1. Set code when the vehicle power is off before first use and replacement of batteries.

2. Load batteries, turn on the car power until the light flashes and the code setting is OK.

3. Press and hold the Code button and turn on the power of the car until the light flashes, the code setting is OK.

4. Replace the batteries if the remote control lights flashing when press any key.

### Speed button

Press the speed control button to set the vehicle at low or medium speed or high speed. This button won't work while your vehicle moves backwards.

### Status Light

When the vehicle is rocking, the four indicator lights are flashing

One light at low speed, two lights at medium speed and all four lights at high speed.

When you press the brake button, all four lights flash at the same time.

## **Warning**

1. When the remote control car is operated, the distance between children and adults should not exceed 10m (32.8 ft).
2. The remote control is only allowed to be used by guardians and not allowed to be touched by children.
3. Before the remote control operation, read the manual carefully and carry out the empty car experiment. Only after getting familiar with it can children use it.
4. The remote control vehicle is not allowed to drive on the road of motor vehicles, water sources, obstacles and other places.
5. The remote controller shall not be soaked in rain or other ways to avoid line damage.
6. Do not mix old and new batteries with batteries of different brands.
7. If the remote control is not used for a long time, it is recommended to take out the battery to avoid battery leakage, corrosion of circuit board and damage of remote control.
8. In the process of remote control, the remote controller should be avoided from falling down.
9. The battery should be put in with correct polarity, and short circuit between positive and negative electrodes of battery is strictly prohibited.
10. Rechargeable batteries can only be charged under adult supervision. Non rechargeable batteries cannot be charged.
11. The exhausted batteries should be removed from toys and properly handled to prevent children from playing.
12. When the toy is not used for a long time, take out the battery from the toy and handle it properly to prevent children from playing.
13. If the distance between the remote control and the control range is less than 3m(9.8 ft), it means that the remote control battery is insufficient. Two aa1.5v alkaline batteries should be replaced.
14. Before charging, please check whether the charger, battery and plug are damaged. If any damage is found, stop using it until it is repaired.
15. Adult supervision is required. Never use in roadways, near motor vehicles, on or near steep inclines or steps, swimming pools or other bodies of water.

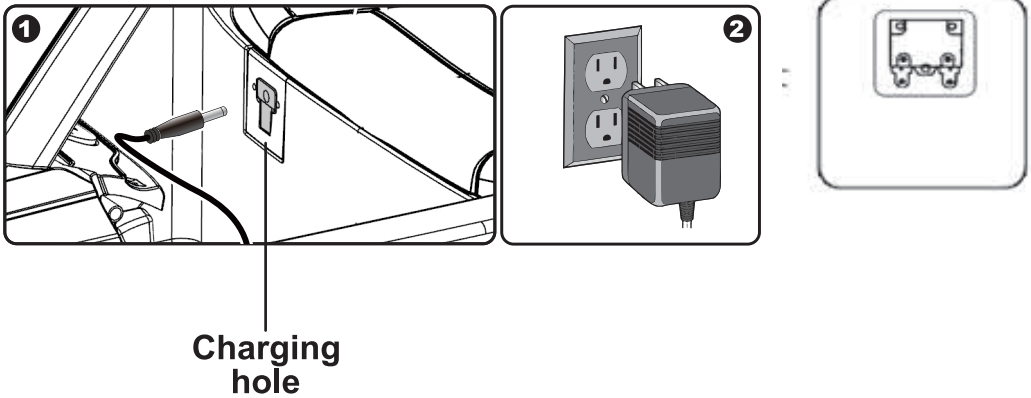
## Charging mode

In order to ensure safety, this product must be charged by adults.

The charging socket is located at the front lower end of the seat, and the charging procedure is operated according to the following figure.

When the normal driving is slow, it should be charged to 8-12 hours in time, and the maximum should not exceed 20 hours.

Insert the charger into the charging hole (the whole vehicle is powered off).  
Plug the charger into the power socket.



**Note: the fuse is 10A or 13A.**

**Replace the fuse:**

(1) if it is necessary to replace the fuse, first open the seat, take out the reset fuse, and then replace the reset fuse.

(2) the product uses a recoverable over-current fuse. When the current is too high, it will automatically cut off the power supply, and it can be automatically restored in 5-10 seconds

## **BE CAREFUL**

- Only use the charger and battery specified by the manufacturer.
- Do not mix old and new batteries or different types of batteries.
- Battery terminals should not be short circuited.
- Do not turn on the battery and charger.
- Do not turn the battery upside down.
- Before charging, please check whether the charger, battery and plug are damaged. If any damage is found, stop using it until it is repaired.
- When charging, the charger will slightly heat up, which is a normal phenomenon, otherwise, the charger battery or circuit malfunctions.
- The battery must be fixed with a pressure plate. If the car overturns, the battery will fall out and hurt children.
- The exhausted batteries must be disposed of by adults. Take out the used batteries from toys and recycle them properly. Do not discard them at will.
- If the product is stored or not used for a long time, it must be fully charged, the red main line must be pulled out, and the battery should be charged once a month to ensure the battery life.
- Chargers are not toys and children are not allowed to play.

## **Maintenance**

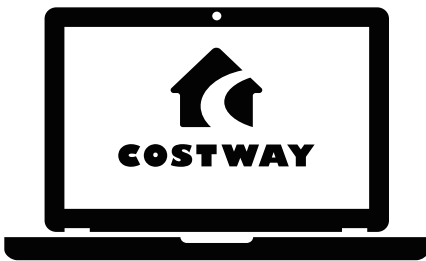
1. Before use, parents should check whether the main parts are in good condition, whether the batteries, chargers, wires, plugs, shells and other parts are damaged, whether the screws are loose, and whether there are potential safety hazards. If any damage is found, they should stop using until they are repaired.
2. After using for a period of time, use a small amount of lubricating oil to lubricate the iron parts of the vehicle to prevent wear and rust.
3. The vehicle should be placed away from the fire source and avoid long-term illumination. When storing, it should be placed upward and horizontally. In wet weather, the vehicle should be parked indoors or covered with waterproof cloth.
4. Vehicles should be kept away from hot objects, such as furnaces and heaters. Plastic parts may melt. When charging, keep away from flammable materials to prevent fire.
5. Please charge the battery in time after use. The charging must be operated by adults. If it is stored or not used for a long time, it must be fully charged first. Pull out the red main line and charge once a month to prolong the battery life.
6. Use dry soft cloth to wipe the vehicle, or use non wax furniture polishing material instead of soft cloth to wipe plastic parts to achieve smooth surface effect. Do not use chemical solvent to wipe the plastic parts of toys. Do not clean the vehicle with soap and water. Do not drive the vehicle in rainy or snowy weather. Water will damage the motor, vehicle circuit system and battery.
7. When you stop using or placing the product, please turn off the power supply of the product and turn all switches to the "stop" or "off" position.
8. Do not use fuses that do not conform to the specifications of this product.
9. Do not change the structure and circuit system of this product without authorization. The maintenance work must be carried out under the guidance of professionals or technicians.
10. Do not use toys for other purposes. Put batteries in with correct polarity.
11. It is forbidden to short circuit the positive and negative electrodes of the battery, and the non rechargeable battery cannot be charged.
12. Rechargeable batteries can only be charged under adult supervision.
13. Do not mix old and new batteries with different types of batteries.
14. The exhausted batteries should be removed from toys and properly handled to prevent children from playing.
15. When the toy is not used for a long time, the battery should be removed from the toy and properly handled to prevent children from playing.

**Welcome to visit our website and purchase our quality products!**

With your inspiring rating, COSTWAY will be more consistent to offer you  
**EASY SHOPPING EXPERIENCE, GOOD PRODUCTS and EFFICIENT SERVICE!**

US office: Fontana, California

UK office: Ipswich



- \* Reward Points
- \* Exclusive Customer Service
- \* Personalized Recommendations
- \* Permanent Shopping Cart
- \* Order History

*5 Star Rating*



We would like to extend our heartfelt thanks to  
all of our customers for taking time to assemble  
this product and giving us valuable feedbacks.

THANK  
YOU  
😊

