



Meet delights for your home here



## Shelf Floor Lamp **EU10046US**

**USA** office: Fontana

**GBR** office: Ipswich

**AUS** office: Truganina

If you're having difficulty, our friendly customer team is always here to help.



USA: [cs.us@costway.com](mailto:cs.us@costway.com)  
AUS: [cs.au@costway.com](mailto:cs.au@costway.com)  
GBR: [cs.uk@costway.com](mailto:cs.uk@costway.com)

THIS INSTRUCTION BOOKLET CONTAINS **IMPORTANT** SAFETY INFORMATION. PLEASE READ AND KEEP FOR FUTURE REFERENCE.





## Before You Start

- ⚠ Please read all instructions carefully.
- ⚠ Retain instructions for future reference.
- ⚠ Separate and count all parts and hardware.
- ⚠ Read through each step carefully and follow the proper order.
- ⚠ We recommend that, where possible, all items are assembled near to the area in which they will be placed in use, to avoid moving the product unnecessarily once assembled.
- ⚠ Always place the product on a flat, steady and stable surface.
- ⚠ Keep all small parts and packaging materials for this product away from babies and children as they potentially pose a serious choking hazard.

## PRODUCT SPECIFICATION

**Item size:** 10x10x61inch (W x W x H)

**Lampshade size:** 9"x14"

**Material:** MDF + Plastic + Fabric

**Item weight:** 12.5lbs

**Style:** Modern

**Switch Type:** ON/OFF foot switch + ON/OFF pull chain switch

**Base type:** E26

**Plug type:** US Plug

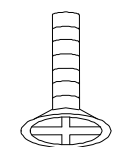
**Voltage:** AC110-120V~60Hz

**Wattage:** Max.60W

## BASIC PRECAUTIONS

1. Unpack and place all parts on a smooth, flat surface.
2. Do not use outdoors or near water.
3. Clean with a soft, dry cloth.
4. Turn off power and read this instruction before installation.
5. Turn off power before changing the bulb and cleaning the fixture.
6. Confirm all the parts found before throwing away the package.

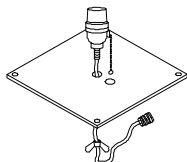




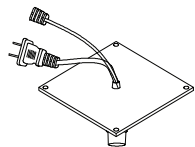
**AX8**  
4x25mm



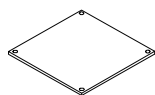
**BX12**  
4x38mm



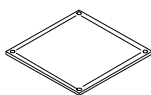
**CX1**  
260x260x9mm



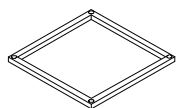
**DX1**  
260x260x25mm



**E1X1**  
260x260x9mm



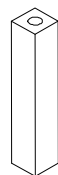
**E2X1**  
260x260x9mm



**FX1**  
260x260x20mm



**GX4**



**HX8**

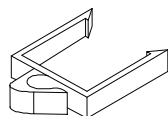


**IX8**

21x21x392mm 21x21x350mm



**JX4**

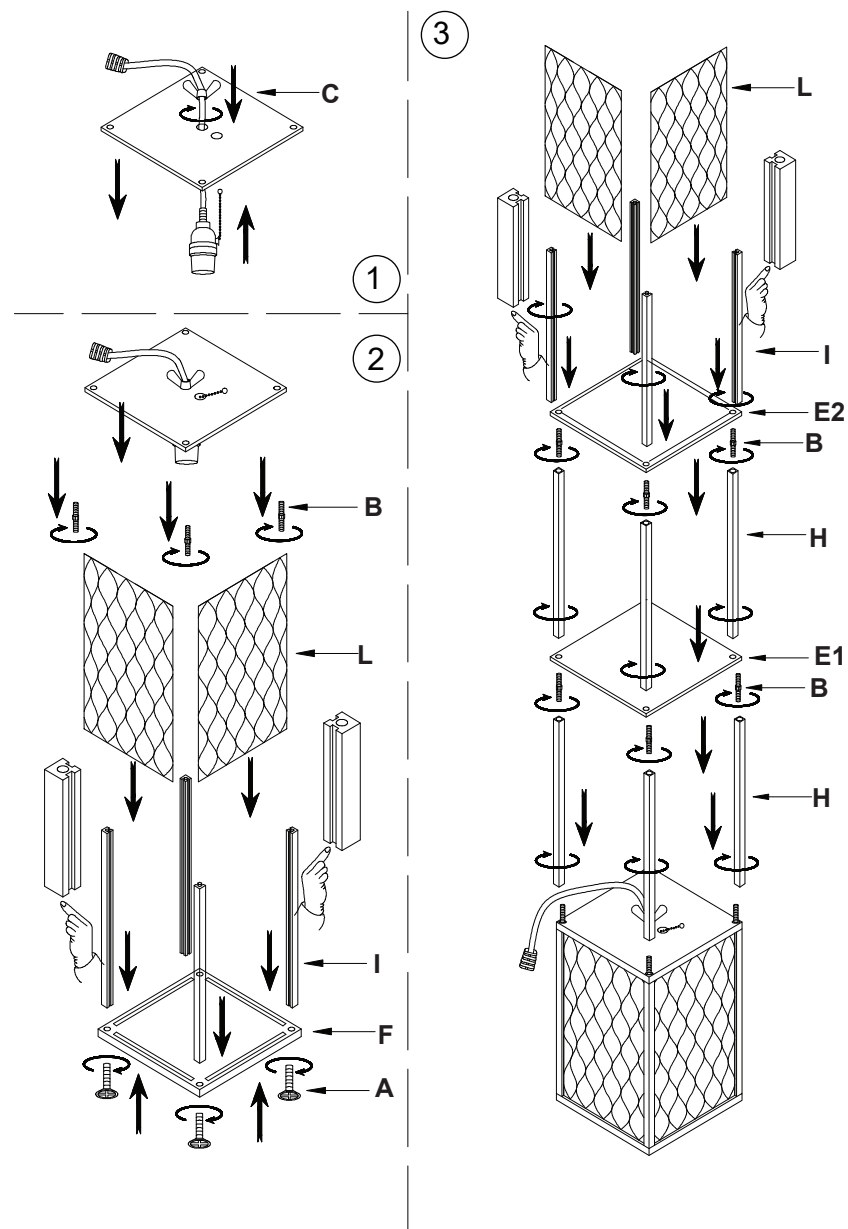


**KX2**

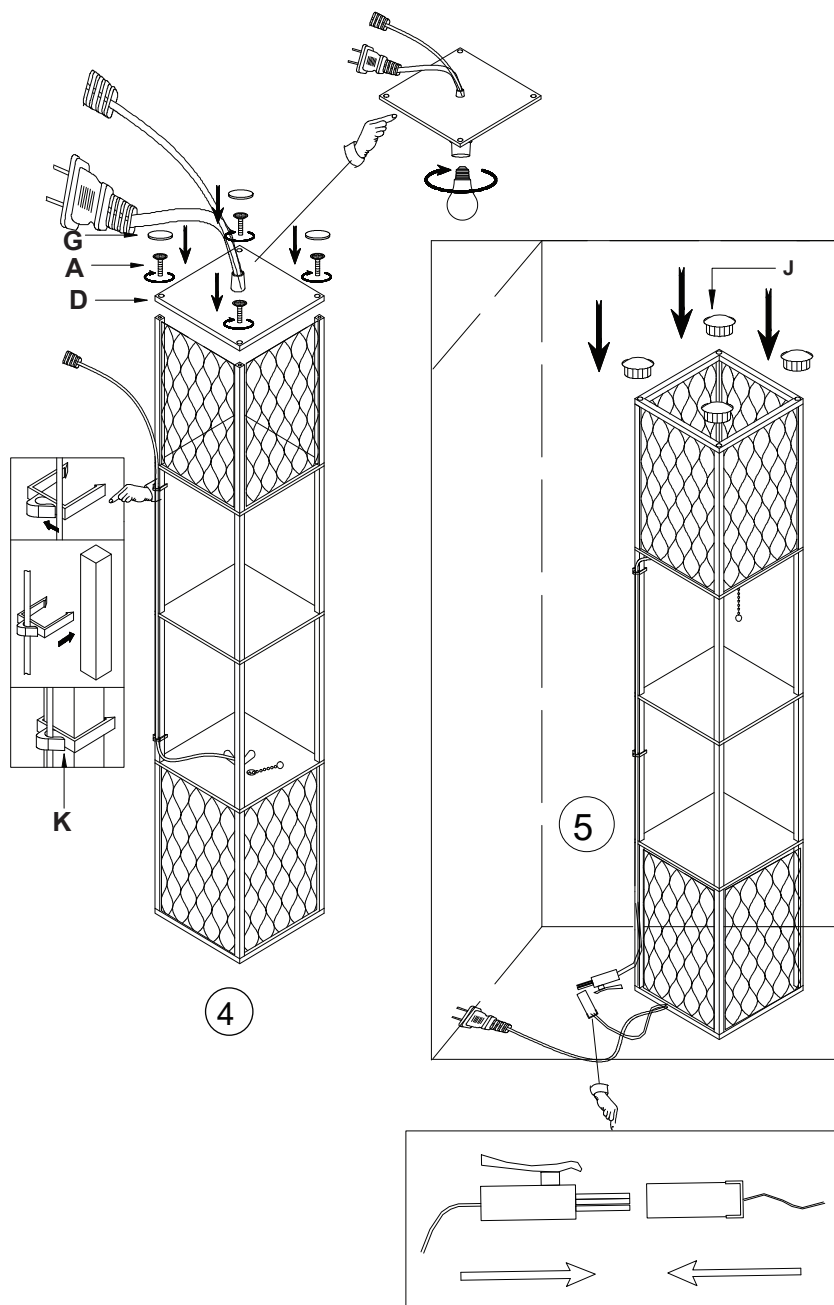


**LX8**

220x355mm







## Return / Damage Claim Instructions

- ⚠ **DO NOT discard the box / original packaging.**  
In case a return is required, the item must be returned in original box. Without this your return will not be accepted.
- ⚠ **Take a photo of the box markings.**  
A photo of the markings (text) on the side of the box is required in case a part is needed for replacement. This helps our staff identify your product number to ensure you receive the correct parts.
- ⚠ **Take a photo of the damaged part (if applicable).**  
A photo of the damage is always required to file a claim and get your replacement or refund processed quickly. Please make sure you have the box even if it is damaged.
- ⚠ **Send us an email with the images requested.**  
Email us directly from marketplace where your item was purchased with the attached images and a description of your claim.