

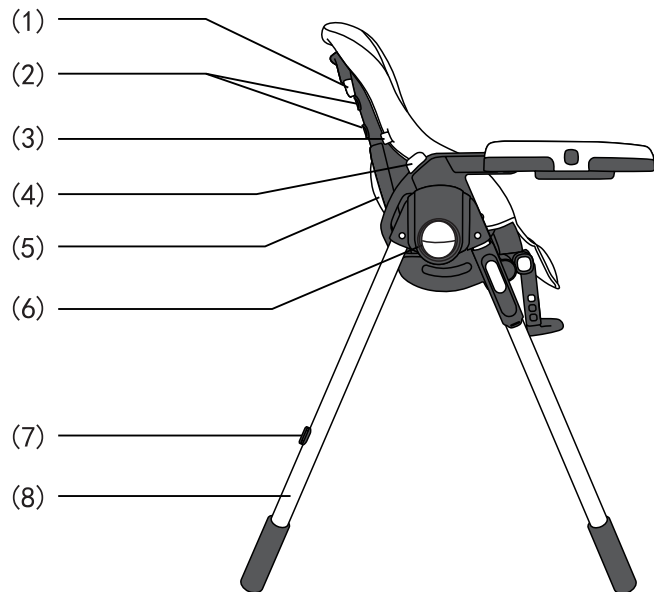
**IMPORTANT!**

BEFORE ASSEMBLING THIS BABY HIGH CHAIR,  
READ AND UNDERSTAND THE INSTRUCTION.  
KEEP THIS INSTRUCTION IN A SAFE PLACE  
FOR FUTURE REFERENCE.

**USER'S MANUAL**

**Baby High Chair  
BB5250**

## PARTS



(1) . Button to adjust backrest

(2) . Hole to fix the safety belt

(3) . Hook to fix the seat fabric

(4) . Button to adjust the seat height

(5) . Storage bag

(6) . Folding button

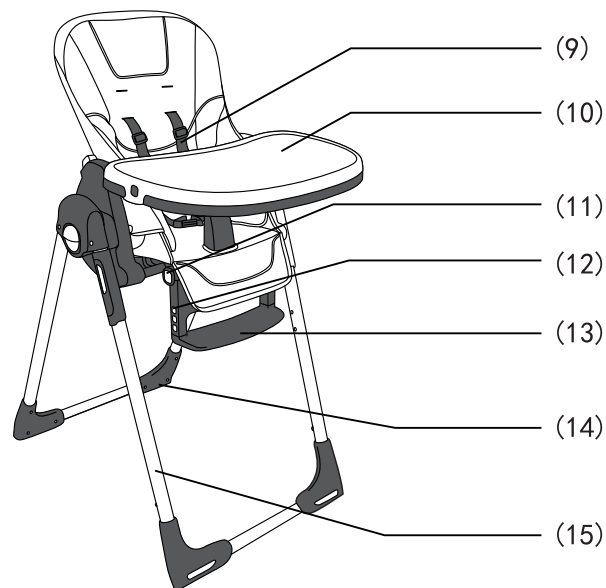
(7) . Hooks to store tray

(8) . Rear leg

# ! WARNING

- Please read this instruction manual carefully before using the high chair and save it for future reference. Failure to follow the instructions contained in this manual may affect your child's safety.
- Do not leave children unattended.
- Always make sure the harness is properly used.
- This high chair is suitable for children from 0 to 60 months.
- Do not use the high chair when any element is broken, torn or missing.
- Before use, check the locking mechanism is fully engaged and properly adjusted.
- Make sure the high chair is on a stable floor.
- Be sure to check regularly that your high chair has no loose screws or other element likely to hurt the child, such as hang or catch your child's clothes, this could cause a strangulation hazard.
- To avoid danger of suffocation, remove the plastic before using this products.
- Avoid the risks posed by the presence of an open fireplace or other heat sources( stove, oven, gas or electric heating, etc...)

## PARTS



(9). 5 point safety harness

(10). Tray

(11). Button to adjust the footrest

(12). Button to adjust the footrest height

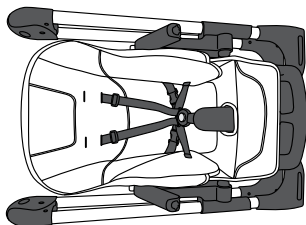
(13). Footrest

(14). Castor

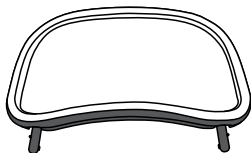
(15). Front leg

## PARTS

1. High chair  
frame\*1



2. tray\*1



## MAINTENANCE AND CLEANING

### Plastic/Metal Parts:

Wipe clean using a mild soap and warm water. Dry thoroughly.

Never use ammonia based, bleach or spirit cleaners.

Do not use abrasive cleaners or abrasive pads.

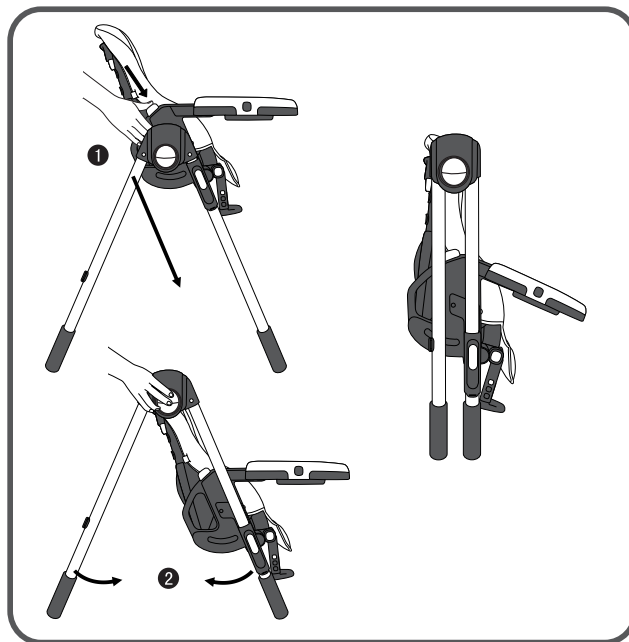
Store away from direct sunlight to avoid fabrics and plastics discolouring

Ensure products is dry before storing.

## ASSEMBLING

### 9 FOLD THE HIGH CHAIR

1. Place the seat to the bottom position.
2. Press on both main hinge buttons, then close two legs.
3. Place the tray to the rear leg.

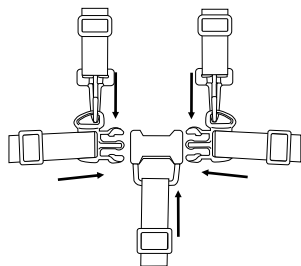


## ASSEMBLING

### 8 HARNESS

**WARNING: USE THE HARNESS AT ALL TIME.**

- 1、Place the child in the seat and bring the safety harness around the child's waist and over the shoulders. Place the crotch strap between the child's leg. Insert the common end of the shoulder/waist belt into the buckle on the crotch strap.
- 2、To release, apply pressure to both sides of each common clip until the clip is released.

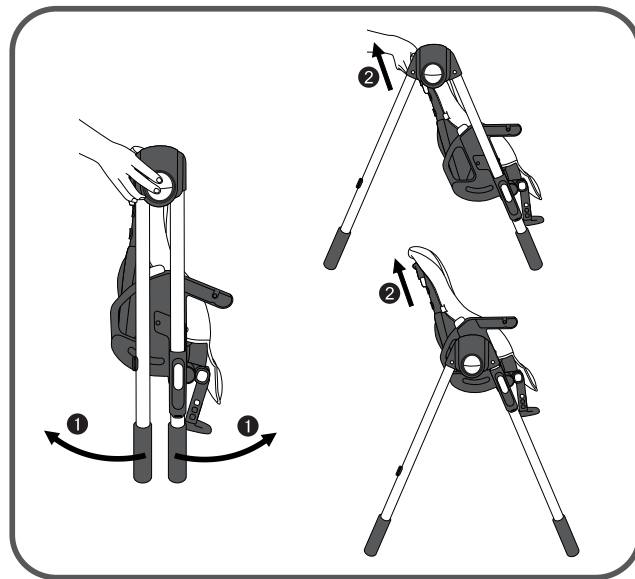


## ASSEMBLING

### 1 OPEN THE HIGH CHAIR

Press on the both main hinge buttons simultaneously, then spread the legs of the high chair.

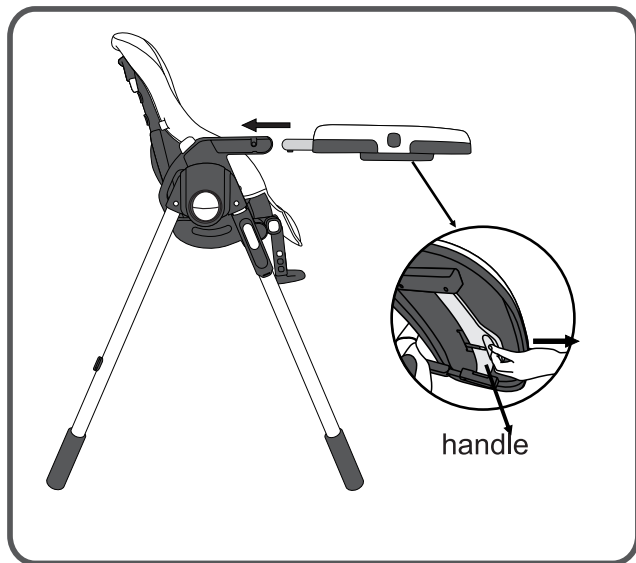
Pull the back of the seat to the position you want.



## ASSEMBLING

### 2 ASSEMBLE THE TRAY

1. Pull the handle located under the shelf, then insert the tubes in the housing end. Slide the tray forward and backward to check the tray be fixed well.



## ASSEMBLING

### 7 FOOTREST ADJUSTMENT

Press the buttons at the both side of footrest and rotate the footrest to different angles. It has three adjustable positions.



## ASSEMBLING

### 6 FOOT REST LENGTH ADJUSTMENT

Press the small square buttons at the both side of footrest and lengthen to desired position.

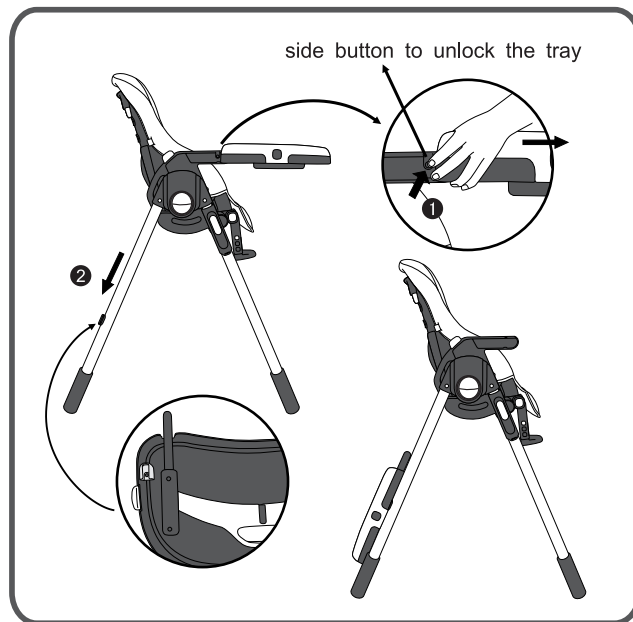
It has three adjustable positions .



## ASSEMBLING

### 3 UNLOAD THE TRAY

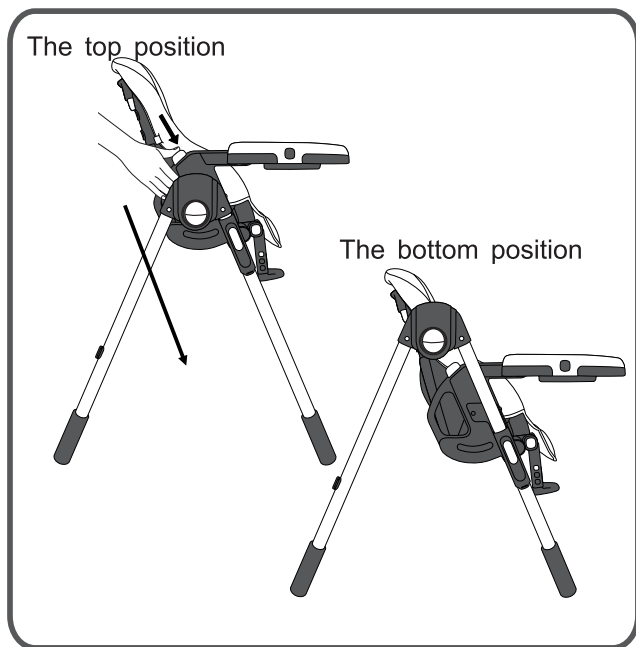
Slide the tray to the last position which is marked with a red circle, and press the side buttons to unlock the safety catch, then slide the tube out completely.



## ASSEMBLING

### 4 SEAT HEIGHT ADJUSTMENT

Holding the 2 handles, press the button simultaneously to lower the seat, it has 6 positions to be adjusted.



## ASSEMBLING

### 5 BACKREST ADJUSTMENT

**WARNING:** The upright position is suitable for children from 0 to 60 months.

Press the lever on the back of the seat to adjust the seat.

It has 5 reclining positions.

