

USER'S MANUAL

Baby Bassinet BB5568

THIS INSTRUCTION BOOKLET CONTAINS **IMPORTANT** SAFETY INFORMATION. PLEASE READ AND KEEP FOR FUTURE REFERENCE.

Please give us a chance to make it right and do better!

Contact our friendly customer service department for help first.

Replacements for missing or damaged parts will be shipped ASAP!

Follow Costway



Contact Us!

Do NOT return this item.

Contact our friendly customer service department for help first.



Before You Start

Please read all instructions carefully and keep it for future reference.

General Warnings:

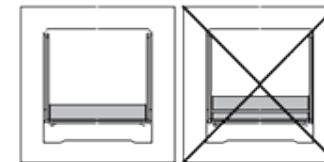
- ⚠ **Attention:** To prevent possible injury by entanglement, remove this toy when the child starts trying to get up on its hands and knees in a crawling position.
- ⚠ **Danger!** Keep all small parts and packaging materials for this product away from babies and children, otherwise they may pose a choking hazard.
- ⚠ **The product must be installed and used under the supervision of an adult.**
- ⚠ **Read through each step carefully and follow the proper order.**
- ⚠ **Remove all Packaging, separate and count all parts and hardware before Installation.**
- ⚠ **Please ensure that all parts are correctly installed, incorrect Installation can lead to a Danger.**
- ⚠ **We recommend that, where possible, all items are assembled near to the area in which they will be placed in use, to avoid moving the product unnecessarily once assembled.**
- ⚠ **Ensure a secure surface during construction, and place the product always on a flat, steady and stable surface.**

IMPORTANT : RETAIN FOR FUTURE REFERENCE , READ CAREFULLY.

Conforms to safety requirements

DIRECTIONS FOR USE

- In order to avoid all danger of suffocation, remove the protective plastic cover before using this article. This covering should then be destroyed or stored out of the reach of babies and children.
- To be assembled by an adult.
- From birth until about 6 months old.
- Place the crib on a flat surface.
- Do not let other children play unattended near the crib.
- WARNING: Do not use this product until you have read the instructions.
- WARNING : Do not place additional items (e.g. toys, pillows...) in the product;
- WARNING : Do not place the product close to another product, which could present a danger of suffocation or strangulation, e.g. strings, blinds/curtain cords, etc
- WARNING: Placing other items in the product may be the cause of suffocation
- WARNING: Do not use more than one mattress in the product.
- WARNING: Fasten the crib in a fixed position when the baby is in the crib unsupervised.
- WARNING: Never use this product if there are any loose or missing fasteners, loose joints, broken parts, or torn mesh/ fabric.
- Use only accessories or spare parts sold or approved by the manufacturer.
- WARNING: Once a child can sit up, crawl or stand up alone, the crib should no longer be used for this child.
- WARNING: To avoid hazards from the child's neck being caught on the top rail on the side that is next to the adult bed, the top rail must be no higher than the adult bed mattress.
- WARNING: To avoid entanglement hazards, the attachment system to the adult's bed shall always be kept out of the crib.
- WARNING: A bedside sleeper shall ONLY be used once it has been securely attached to the adult's bed or when the drop side is in the fully raised position to prevent the child falling from height.
- All assembly devices should be properly fastened, taking great care that no screws are left sticking out, as a baby could become entangled with a part of his clothing or body (for example: cords, necklaces, dummy ribbons, etc.), which would give rise to a risk of strangulation.
- The crib frame should not be used without its support.
- WARNING: Use only the mattress sold with this cradle, do not add additional mattress on this one, risk of suffocation.



- WARNING: In order to avoid the risk of starting a fire, do not place the bed close to a source of heat (gas or electric heater, electric lamp, etc ...).
- Inspect all components of the crib before use.
- The bedside sleepers shall never be used in an inclined position
- To prevent suffocation hazard from entrapment, bedside sleeper must be properly secured to adult bed using the attachment system.
- Use only the attachment system provided with this cradle.
- (1) There must be no gap between the lower side of the bedside sleeper and the mattress of the adult bed.
- (2) Check tightness before each use by pulling bedside sleeper in a direction away from adult bed.
- (3) If there is any gap DO NOT use product.

DANGER: WHEN THE BABY BED IS NOT ATTACHED TO THE BED OF THE ADULT, IT MUST BE USED WITH ALL RIBS IN PLACE AND IN THE HIGHEST POSITION.

INSTRUCTIONS FOR USE AND MAINTENANCE

- Oil rotating parts regularly to improve the life of the product.
- Wipe clean with a soft, dry cloth, sponge or brush.
- Do not use acidic or alkaline water to clean metal components.
- Store the crib in a dry, safe place, when not in use.

Parts included



1. Baby bassinet
2. Mattress
3. Spring
4. Spring straps

5. Tube
6. Strap for fixing to parents' bed
7. Fixing bars
8. Carrying bag

Assembly instructions

STEP 1



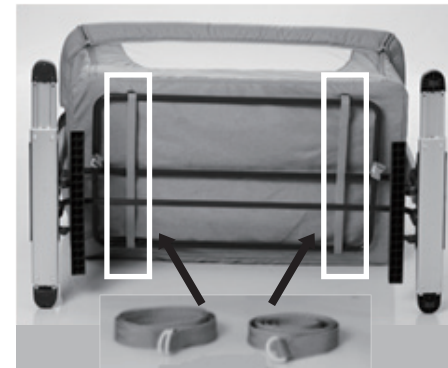
STEP 2



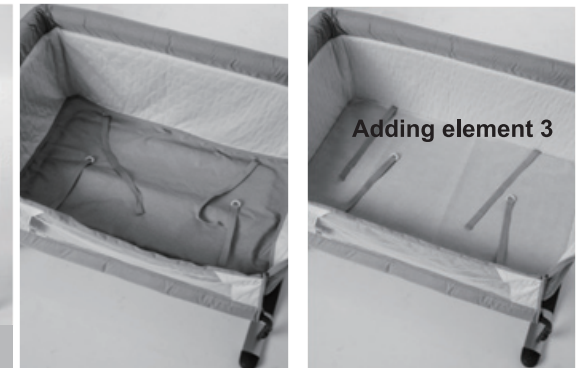
STEP 3



STEP 4



STEP 5



Adding element 3

STEP 6



STEP 7



Adding element 2

STEP 8



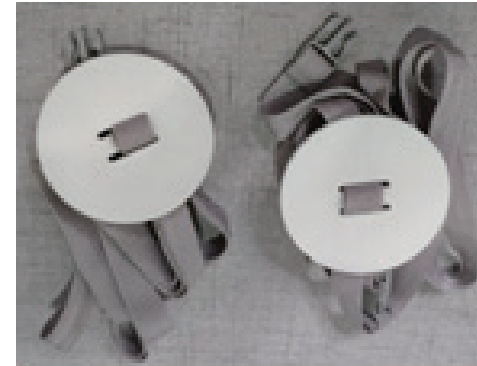
STEP 9



STEP 10

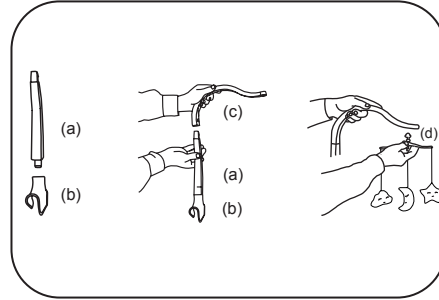
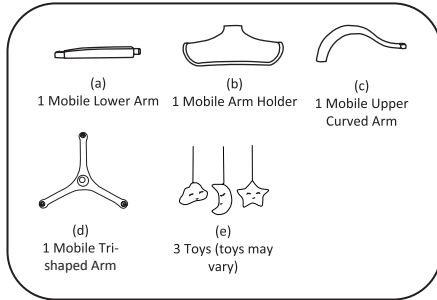


STEP 11

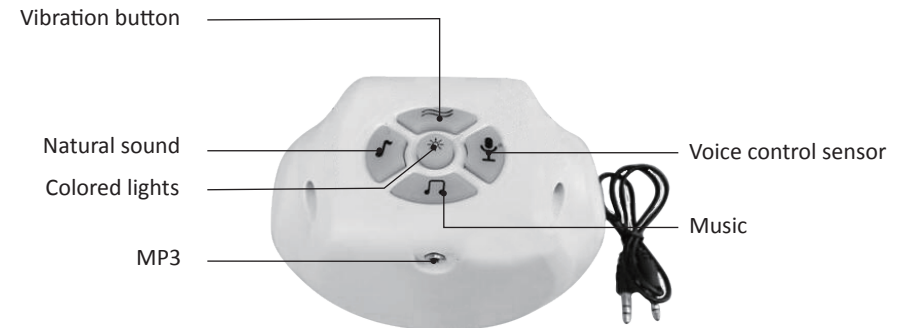
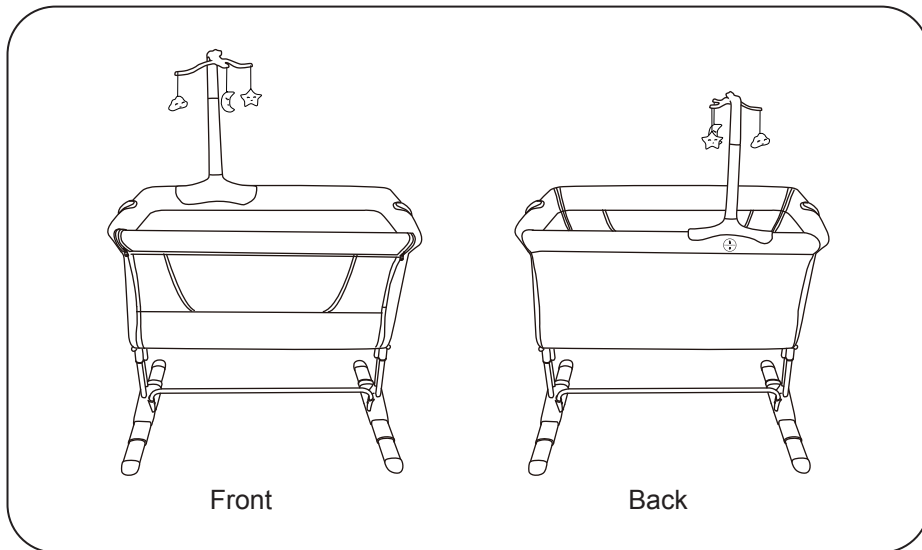


The baby bed must be able to be fixed to the structure of the parents' bed or to the mattress support (grid or slatted base).

The assembly of toys bar:



Insert the bottom of the Mobile Arm into the frame of the Playard.
Then finish the assembly of this baby bassinet.



Six In One Function Introduction

1. Press the vibration button to vibrate for 15 minutes, and realize: low/ medium/ high/OFF gear
2. Press the natural sound button to play the sound of flowing water, and realize: low/medium/high/OFF function
3. Press the music button to play music + water sound/bird calls, etc., and realize the low/medium high/OFF function
4. Press the light button and the light will be on for 15 minutes and realize the ON/OFF function
5. Voice control sensor: turn off all other functions and then turn on the voice control sensor button. The crying sound after the baby wakes up from sleep can trigger the alarm (soothing music, colored lights, vibrators, etc.)
6. MP3 connected to mobile phone can play music or stories.

Remarks: When playing built-in music, the MP3 cable must be unplugged.

Welcome to visit our website and purchase our quality products!

With your inspiring rating, COSTWAY will be more consistent to offer you
EASY SHOPPING EXPERIENCE, GOOD PRODUCTS and EFFICIENT SERVICE!

US office: Fontana, California

UK office: Ipswich



- * Reward Points
- * Exclusive Customer Service
- * Personalized Recommendations
- * Permanent Shopping Cart
- * Order History

5 Star Rating



We would like to extend our heartfelt thanks to
all of our customers for taking time to assemble
this product and giving us valuable feedbacks.

