



TIPS:

Your suggestions and comments for Costway are really important to us!
We sincerely solicit you to go back to our shop and leave a good rating in just a simple click. It would be quite encouraging if you could kindly do so like below:

★★★★★ Great products so far

February 24, 2018

Great product so far. Fast delivery, easy setup, and working without any issues.

With your inspiring rating, Costway will be more consistent to offer you
EASY SHOPPING EXPERIENCE, GOOD PRODUCTS and EFFICIENT SERVICE!

US office:Fontana

UK office:Ipswich

FUS



FUS



USER'S MANUAL

BLOWER

EP21742

PRODUCT ASSEMBLY

READ AND UNDERSTAND ALL WARNINGS AND INSTRUCTIONS BEFORE USING THIS MACHINE!



9) Do not drop or throw the unit. Treatment of this type can cause damage to the components and create hazardous conditions.

Plug your air mover into a standard grounded outlet with the correct voltage and amperage. If you are unsure about the outlet, contact a qualified electrician. Turn on the switch and check that the unit operates properly before letting it run.

- Inspect the electrical cord and wiring for damage or discoloration
- Inspect for loose fasteners
- Clean screens on the side and front of the unit
- Listen for abnormal sounds
- Keep unit clean

Use compressed air or a vacuum to remove lint and other debris from the motor, screen and blower wheel. Do not use a pressure washer to clean the unit.



To reduce the risk of electric shock, do not use an extension cord with this product. Always connect to a properly grounded electrical receptacle, equipped with a GFCI circuit. This machine must be grounded. If it should malfunction or break down, grounding provides a path of least resistance for electric current to reduce the risk of electric shock. This machine is equipped with a cord having an equipment-grounding conductor and grounding plug. The plug must be inserted into an appropriate outlet that is properly installed and grounded in accordance with all local codes and ordinances. Check with a qualified electrician or service person if you are in doubt as to whether the outlet is properly grounded. This machine is designed to operate on a 15 amp, 115 Volt, 60 Hz, AC circuit. Voltages below 105 volts AC or above 125 volts AC could cause serious damage to the motor.



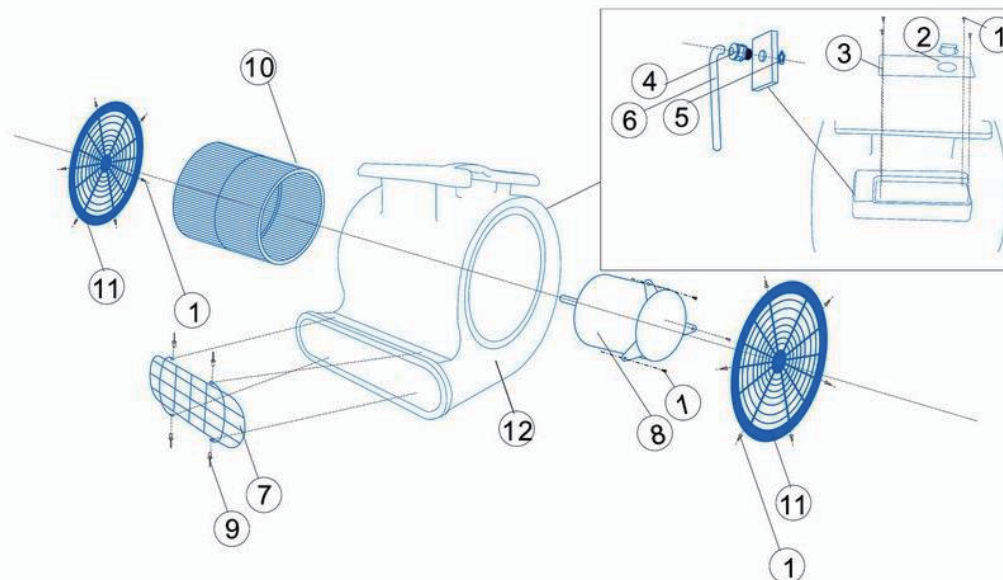
For the safe operation of this machine follow the instructions given in this booklet and the training given by your supervisor. Failure to do so can result in personal injury and/or damage to machine and other property!

PRODUCT ASSEMBLY

TROUBLESHOOTING:

Problem	Cause	Solution
Unit will not run.	1. No power to unit. 2. Switch not on. 3. Switch is faulty. 4. Faulty/broken cord or motor wire	1. Plug unit in. Check circuit breaker. 2. Place in "ON" position. 3. Replace switch. 4. Perform continuity check, using volt/amp meter. Repair/replace faulty broken wire.
Unit runs but air mover makes loud scraping noise.	1. Unit has been severely jolted causing blower wheel to rub against housing. 2. Unit has been severely jolted causing housing to deform.	1. Remove motor and replace damaged motor mounts. 2. Replace blower wheel.
Unit runs but vibrates excessively.	1. Severe jolt has bent motor shaft causing unit to be out of balance. 2. Air mover blade damaged. 3. Dirt build up on one side of air mover blade.	1. Remove and replace motor. 2. Replace blade if necessary. 3. Clean air mover blade.
Unit runs but blower wheel does not turn.	1. Motor bearings are failing or motor has developed an internal electrical fault. 2. Intake grill and/or exhaust grill is obstructed. 3. Excessive duct length.	1. Replace motor. 2. Remove obstruction. 3. Reduce duct length to recommended maximum

AIR MOVER ASSEMBLY:



ITEM NUMBER	PART NUMBER	DESCRIPTION	QTY	ITEM NUMBER	PART NUMBER	DESCRIPTION	QTY
1	MONS-01	SCREWS	19	7	MONS-07	EXHAUST GRILL	1
2	MONS-02	SWITCH ASSEMBLY	1	8	MONS-08	MOTOR	1
3	MONS-03	SWITCH PLATE	1	9	MONS-09	RIVET	4
4	MONS-04	STRAIN RELIEF CAP	1	10	MONS-10	WHEEL FAN	1
5	MONS-05	POWER CORD	1	11	MONS-11	INTAKE GRILL	2
6	MONS-06	NUT	1	12	MONS-12	HOUSING	1