

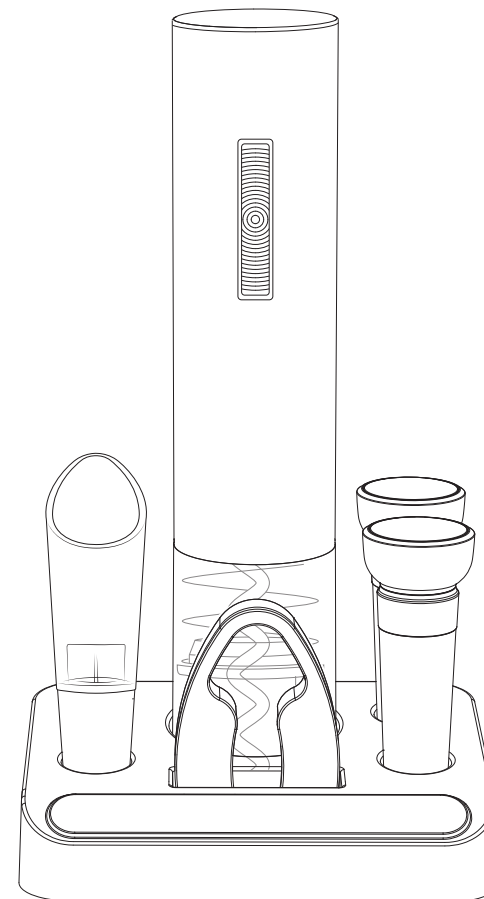


COSTWAY®

Please give us a chance to make it right and do better !

Contact our friendly customer service department for help first.
Replacements for missing or damaged parts will be shipped ASAP !

US office: Fontana **UK** office: Ipswich **AU** office: Truganina
DE office: Hamburg **FR** office: Saint Vigor d'Ymonville **PL** office: Gdańsk



Contact Us!

Do NOT return this item.

Contact our friendly customer service department for help first.



US: cs.us@costway.com
UK: cs.uk@costway.com
AU: cs.au@costway.com

USER'S MANUAL

Electric Wine Opener EQ10004

THIS INSTRUCTION BOOKLET CONTAINS **IMPORTANT** SAFETY INFORMATION. PLEASE READ AND KEEP FOR FUTURE REFERENCE.



Before You Start

- ⚠ Please read all instructions carefully.
- ⚠ Retain instructions for future reference.
- ⚠ Separate and count all parts and hardware.
- ⚠ Read through each step carefully and follow the proper order.
- ⚠ We recommend that, where possible, all items are assembled near to the area in which they will be placed in use, to avoid moving the product unnecessarily once assembled.
- ⚠ Always place the product on a flat, steady and stable surface.
- ⚠ Keep all small parts and packaging materials for this product away from babies and children as they potentially pose a serious choking hazard.

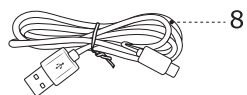
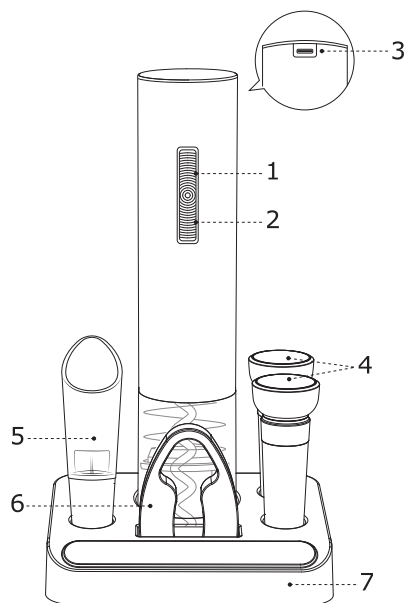
EN Thank you for purchasing the electric wine opener gift set.

BEFORE USING FOR THE FIRST TIME

To ensure safety and maintain the high quality of the product, we recommend that you read and follow the instructions carefully.

- Do not immerse the appliance in water or any other liquid to avoid harm to human or the product.
- Keep body parts (e.g. hands) and utensils away from corkscrew to avoid damage.
- Keep this product away from children.
- Do not dismantle the product by yourself.
- Do not press the product onto a bottle with sudden force or attempt to speed up the mechanism. This product works best when operating at its intended speed.
- No extended use is allowed.
- Keep away from flammable, explosive gas.

PRODUCT DESCRIPTION



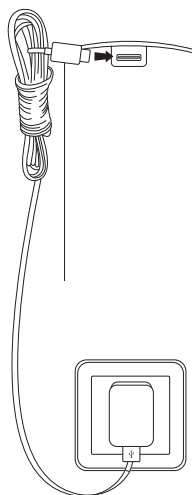
1. Release button
2. Extract button
3. Charging socket
4. Vacuum stopper
5. Pourer
6. Foil cutter
7. Storage base
8. USB Type-C charging line

HOW TO CHARGE

Insert the charging line interface into the USB Type-C charging socket at the back of the opener. Insert the adaptor into an indoor electric socket.

CAUTIONS

- It is recommended to charge 12 hours before using for the first time.
- This product is charged with small current. Long-term charging will not cause damage to this product.
- If the product is not in use, the standby time is one month. After more than one month, please charge it again.
- It takes at least 16 hours to fully charge the battery.

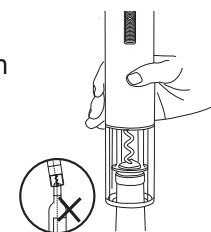


HOW TO USE THE WINE OPENER

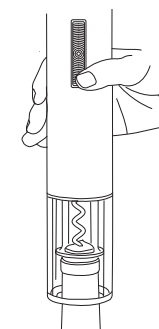
Take the foil cutter off and put onto the bottleneck, hold with fingers by force, rotate the bottle in parallel for more than one circle, and cut off the foil seal.



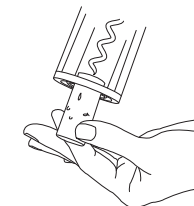
Hold the bottle firmly with one hand and hold the wine opener with the other. Place the bottom of opener body on top of the wine bottle to ensure the opener body remains in line with the wine bottle as much as possible.



Press the extract button and hold, slightly press the opener body downward at the same time. The spiral will turn in a clockwise direction and enter the cork, then gradually remove it from the bottle in 6-8 seconds. When the cork is entirely pulled out, the wine opener stops automatically. Release the button and take the opener off from the bottle.



Press the upper release button and hold for 5-7 seconds, the cork automatically comes out from the opener, release the button, and complete the opening process.



*This product is suitable for corks with a diameter of 20 mm (0.79") to 24 mm(0.94") and a height of 44 mm(1.73")

*This product is suitable for wine bottles with an bottleneck outer diameter of not more than 35 mm(1.38") and an bottleneck inner diameter of 17.5 mm(0.69") to 23 mm(0.9")

CAUTIONS

- Hold the product body and the wine bottle firmly during use.
- The blade of foil cutter is sharp. Don't touch with fingers.
- Please store this product out of reach from children.
- Align the product body with the wine bottle as much as possible, or otherwise the cork cannot be pulled out easily.

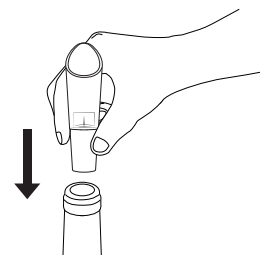
TROUBLESHOOTING

If the opener cannot work or stops in the middle of uncorking:

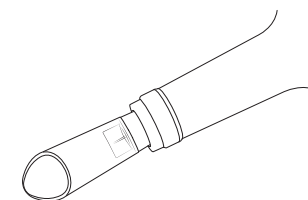
- Please try again after charging for 6-8 hours. (Note: It is recommended not to use the product while charging.)
- Please press the release button until wine opener is entirely separated from bottle, and re-open after ensuring the opener body is aligned with the wine bottle.

If the above operations are all correct and the opener still works abnormally, please contact us.

HOW TO USE THE POURER



•Insert the pourer into the bottleneck.

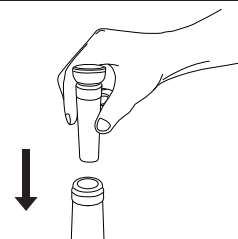


•Tilt the bottleneck to pour wine from with the pourer.

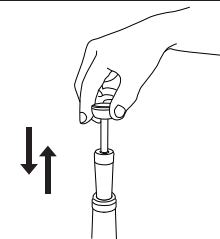
*This product is suitable for wine bottles with an bottleneck inner diameter of 17.5 mm(0.69") to 19.5 mm(0.77")

CAUTIONS: Clean the product with soft detergents and water after use.

HOW TO USE VACUUM STOPPER



•Insert the stopper into the bottleneck firmly.



•Pull the handle up and down for about 15 times (for bottles with half wine left).

Store the bottle in a wine cabinet or refrigerator for better preserving effects. It is recommended to finish in 7 days.

*This product is suitable for wine bottles with an bottleneck inner diameter of 17.5 mm(0.69") to 20 mm(0.79")

*When using the stopper to preserve, it is not recommended to store the wine bottle horizontally.