



USER'S MANUAL

Welding Cart with 4 Drawers TL30207

THIS INSTRUCTION BOOKLET CONTAINS **IMPORTANT** SAFETY INFORMATION. PLEASE READ AND KEEP FOR FUTURE REFERENCE.

Please give us a chance to make it right and do better!

Contact our friendly customer service department for help first.

Replacements for missing or damaged parts will be shipped ASAP!

Follow Costway

Visit us: www.costway.com



Contact Us!

Do NOT return this item.

Contact our friendly customer service department for help first.



Before You Start

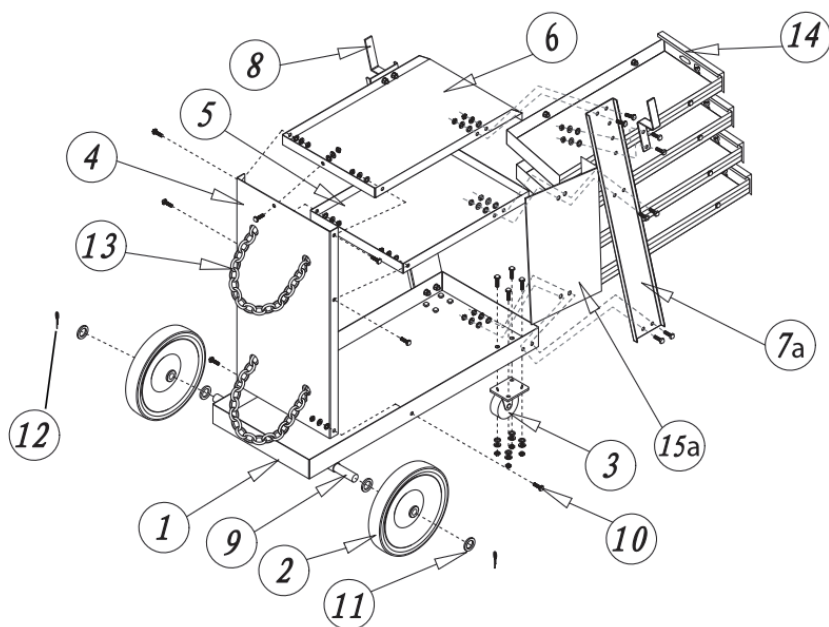
- ⚠ Please read all instructions carefully.
- ⚠ Retain instructions for future reference.
- ⚠ Separate and count all parts and hardware.
- ⚠ Read through each step carefully and follow the proper order.
- ⚠ We recommend that, where possible, all items are assembled near to the area in which they will be placed in use, to avoid moving the product unnecessarily once assembled.
- ⚠ Always place the product on a flat, steady and stable surface.
- ⚠ Keep all small parts and packaging materials for this product away from babies and children as they potentially pose a serious choking hazard.

Note: When attaching hardware, hand tighten only until the unit is together, then use the appropriate tools to tighten the hardware.

Parts List and Diagram

Part	Description	Qty
1	Bottom Shelf Asm.	1
2	Wheel	2
3	Swivel Caster	2
4	Back Panel	1
5	Middle Shelf	1
6	Top Shelf	1
7a	Left Support	1
7b	Right Support (not shown)	1
8	Hook	2

Part	Description	Qty
9	Axle	1
10	Bolt, Washer, Nut (set) M6x12	33
11	Flat Washer	4
12	Cotter Pin	2
13	Chain	2
14	Drawer	4
15a	Left Plate	1
15b	Right Plate (not shown)	1



1.Put a wheel (2) on the end of the Axle (9) and secure it with Flat Washer (11) and Cotter Pin (12). See Figure A. Repeat on the other side.

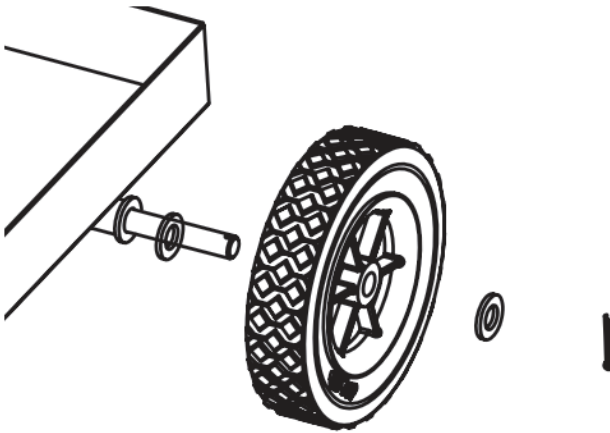


Figure A: Wheel Attachment

2.Using four Bolts, Washer, and Nuts (10), attached a Caster (3) to the Bottom Shelf (1). See Figure B. Repeat on the other side.

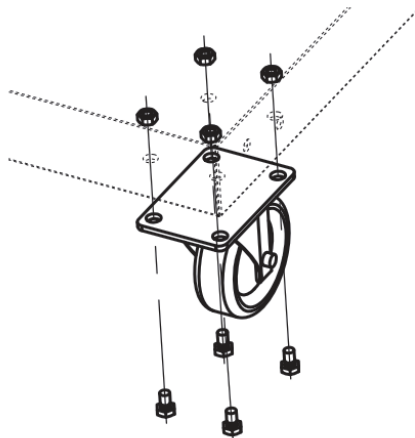


Figure B: Caster (3) Attachment

3. Connect the bottom (note the hole locations in the diagram) of the Left Support (7a) and Left Plate (15a) to the Bottom Shelf (1) using Bolts, Washers, and Nuts (10). See Figure C. Repeat on other side with Right Support (7b) and Right Plate (15b not shown).

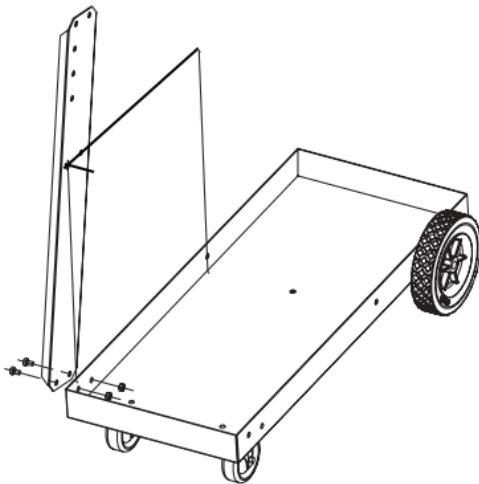


Figure C: Connection of Bottom Shelf (1) and Left Support (7a)

4. Attach the Middle Shelf (5) to the Left and Right Supports (7a, 7b) and Plates (15a, 15b) using Bolts, Washers and Nuts (10).
5. Push 4 Drawers (14) between Left Plate (15a) and Right Plate (15b not shown).
6. Place a Hook (8) over the holes on the outside of the top of a Support (7a/7b), and place the Bolts (10) through both the Hook (8), Support (7a/7b), and the Top Shelf (6). Secure with Washer and Nuts (10). Repeat on the other side.
7. Attach the Back Panel (4) to the Bottom Shelf (1) using Bolts, Washers, and Nuts (10).
8. Attach the Back Panel (4) to the Middle Shelf (5) and the Top Shelf (6) using Bolts, Washers, and Nuts (10).
9. Insert the Chains (13) through the holes in the Back Panel (4).
10. Wrench tighten all of the hardware.

Welcome to visit our website and purchase our quality products!

Your suggestions and comments for COSTWAY are really important to us!
We sincerely solicit you to go back to our shop and leave a good rating in just a simple click. It would be quite encouraging if you could kindly do so like below:

★★★★★ Great products so far

February 24, 2019

Great products so far. Fast delivery, easy setup, and working without any issues.

With your inspiring rating, COSTWAY will be more consistent to offer you
EASY SHOPPING EXPERIENCE, GOOD PRODUCTS and EFFICIENT SERVICE!

US office: Fontana, California

UK office: Ipswich



- * Reward Points
- * Exclusive Customer Service
- * Personalized Recommendations
- * Permanent Shopping Cart
- * Order History

5 Star Rating



We would like to extend our heartfelt thanks to
all of our customers for taking time to assemble
this product and giving us valuable feedbacks.

THANK
YOU
😊

