

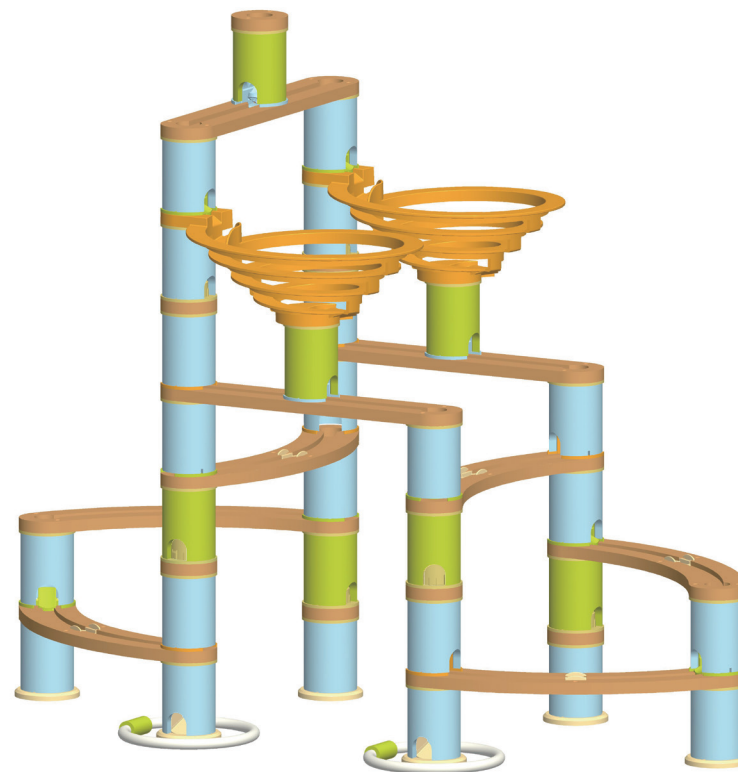


COSTWAY®

Please give us a chance to make it right and do better !

Contact our friendly customer service department for help first.
Replacements for missing or damaged parts will be shipped ASAP !

US office: Fontana UK office: Ipswich AU office: Truganina



Contact Us !

Do NOT return this item.

Contact our friendly customer service department for help first.



US: cs.us@costway.com
UK: cs.uk@costway.com
AU: cs.au@costway.com

USER'S MANUAL

BAMBOO BUILD & RUN TM10010

THIS INSTRUCTION BOOKLET CONTAINS **IMPORTANT** SAFETY INFORMATION. PLEASE READ AND KEEP FOR FUTURE REFERENCE.



Before You Start

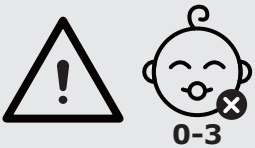
Please read all instructions carefully and keep it for future reference.

General Security Warning

Caution: The Product is not suitable for the children under 3 years

Danger: Keep all small parts and packaging materials for this product away from babies and children, otherwise they may pose a choking hazard.

Danger: Lack of attachment may cause a risk of tipping.



WARNING:
CHOKING HAZARD-Small parts.
Not for children under 3 years.

Warning for Assembly

- ⚠ Assembled only by adults
- ⚠ Remove all Packaging, separate and count all parts and hardware.
- ⚠ Read through each step carefully and follow the proper order.
- ⚠ We recommend that, where possible, all items are assembled near the area in which they will be placed in use, to avoid moving the product unnecessarily once assembled.
- ⚠ Ensure a secure surface during installation, and place the product always on a flat, steady and stable surface.

BAMBOO BUILD & RUN

The New Bamboo Build Run aims to expand little ones possibilities by helping them develop foundation STEM (Science, Technology, Engineering and Mathematics) skills as they build different configurations.

Multiple ways of designs encourage early engineering skills and three-dimensional thinking and build creative capacity. It offers many different ways to engage kids in engineering and problem solving challenges.

Hand crafted carbonized tracks and colourful cylinders, and sustainable wooden powder spirals, each with a different function, are the starting point for an infinite number of designs for marbles to drop to a new level, go right or left, or pour out of the spirals. Each main set contains an instruction booklet to introduce you and your child to the basic principles of playing with the Build Run, the booklet also includes a variety of tricks and tips on how to make connections between the bamboo tracks and cylinders with its fun functional pieces.

Playing on flat surfaces, such as floor, table, etc.



IMAGINATIVE
THINKING



INNOVATIVE
CREATION

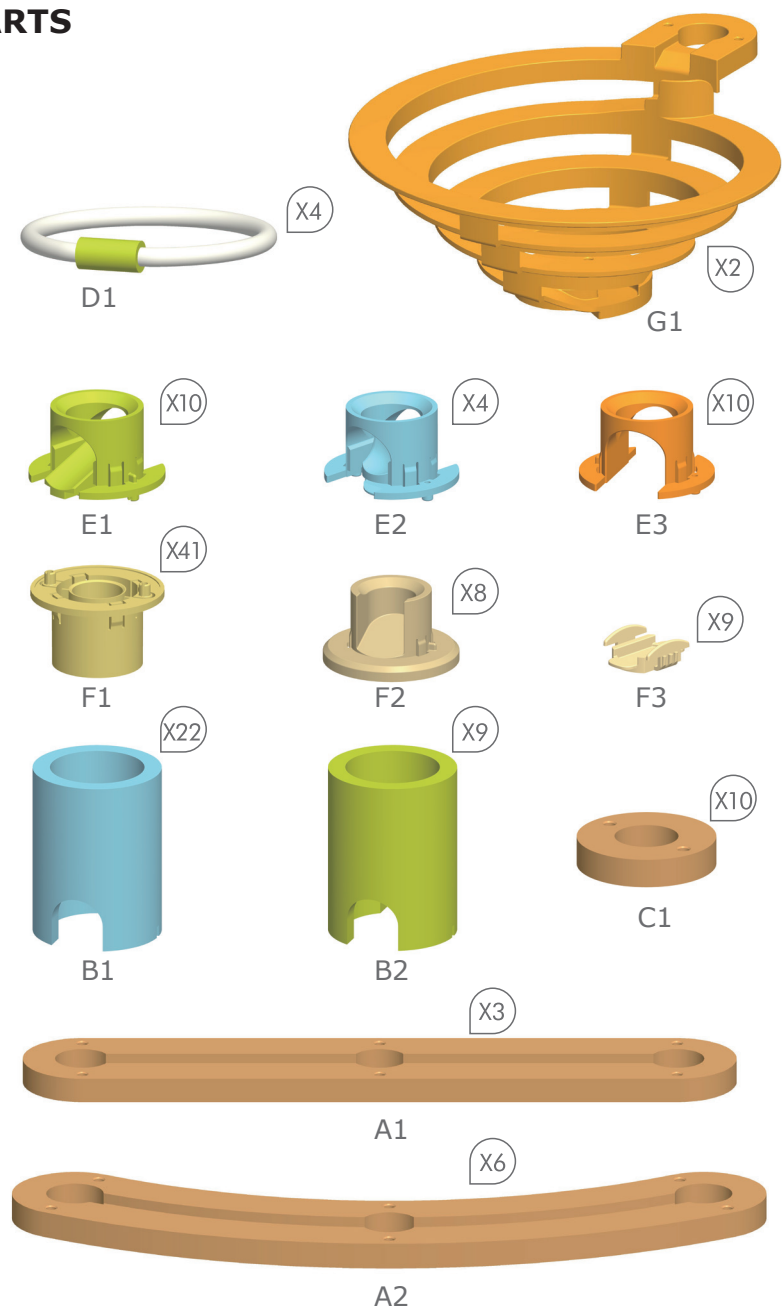


COGNITIVE
ABILITIES

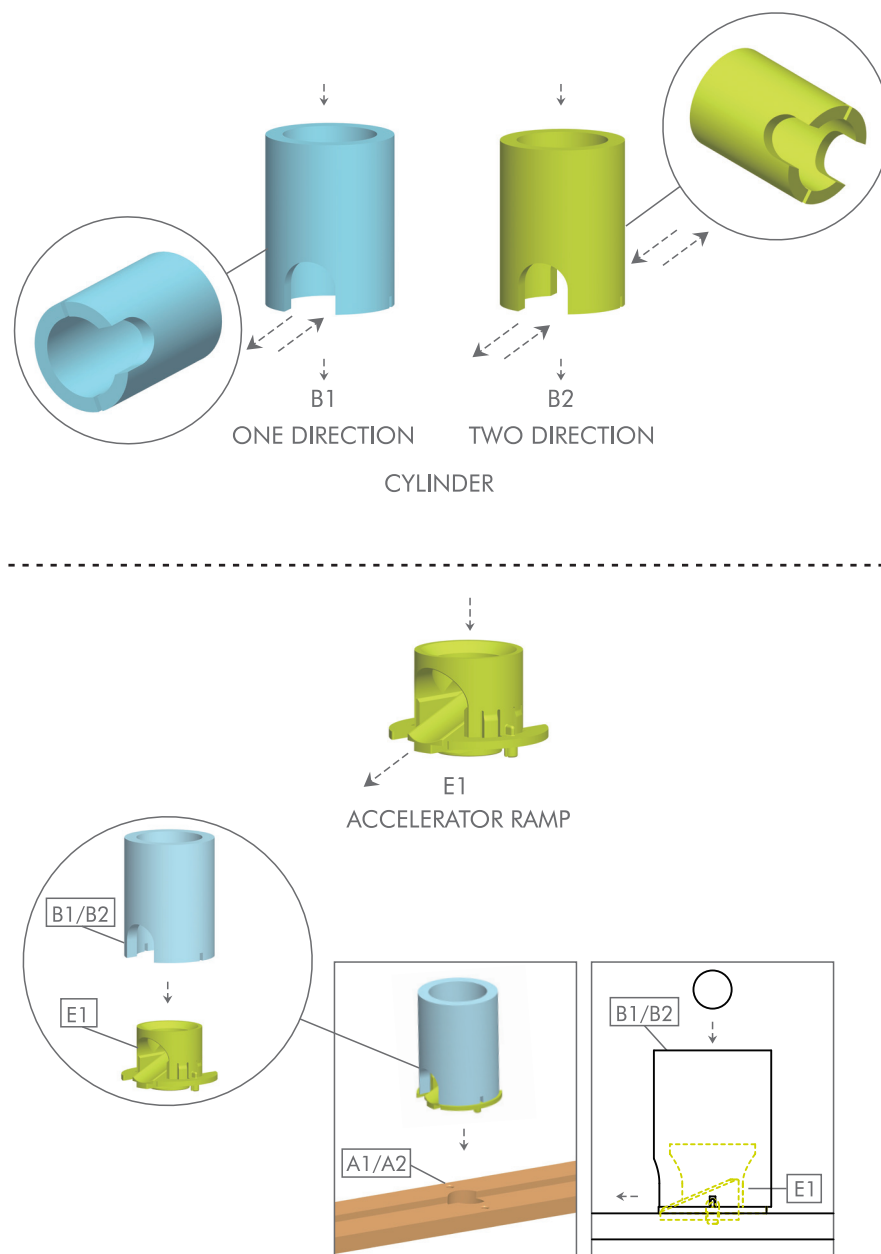


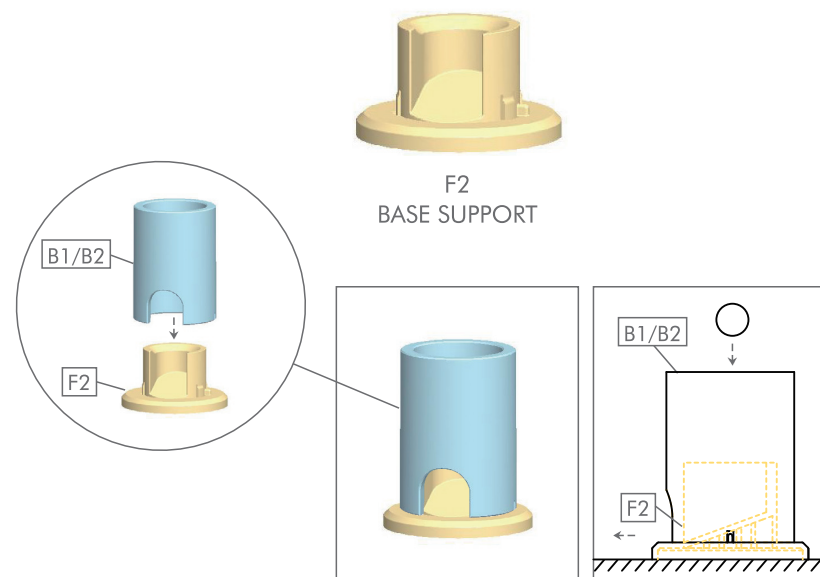
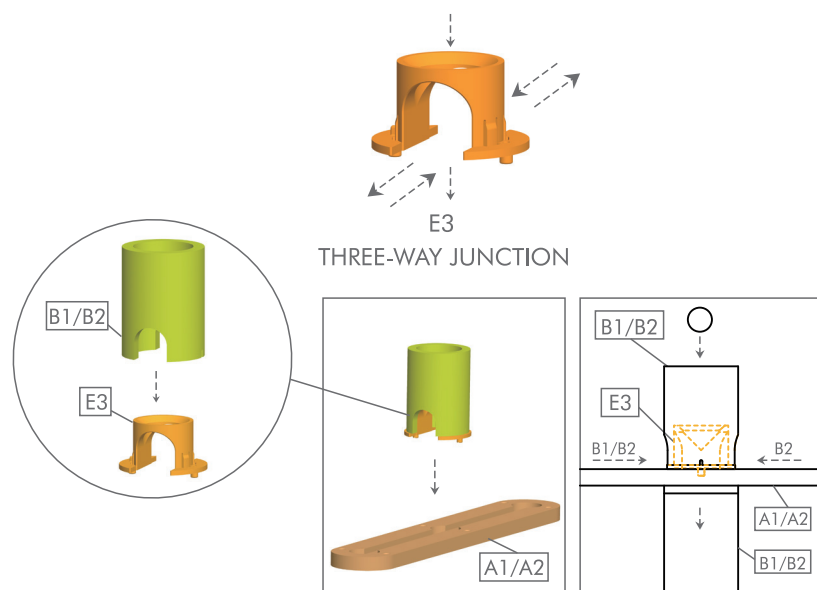
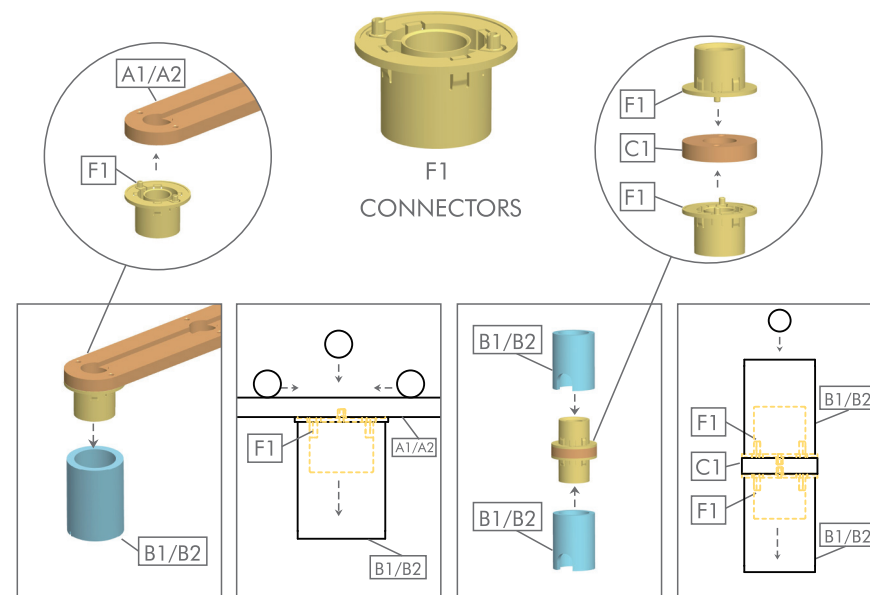
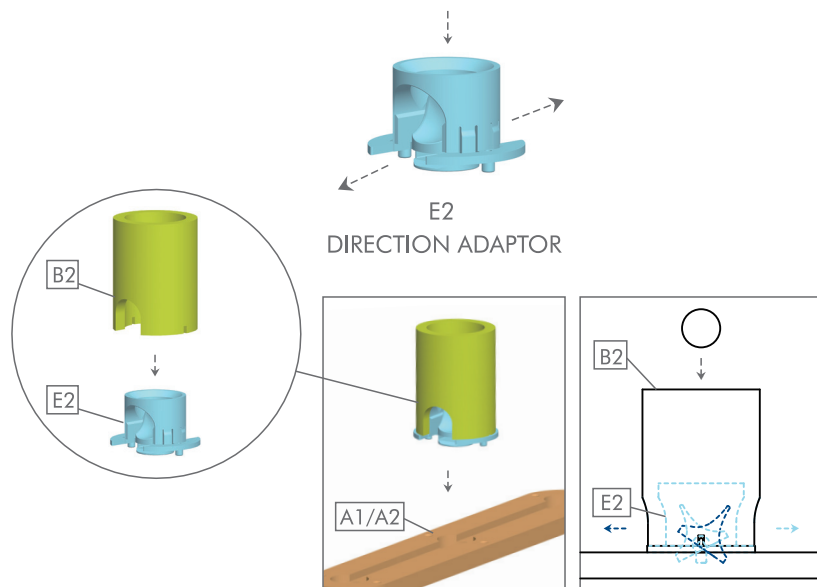
FINE-MOTOR
SKILLS

• PARTS

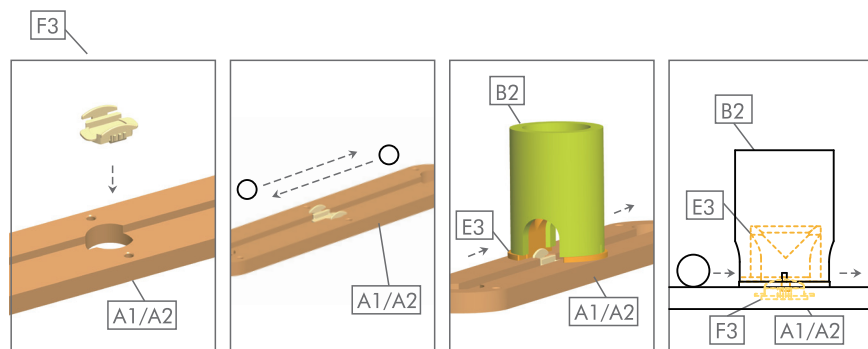


• FUNCTION



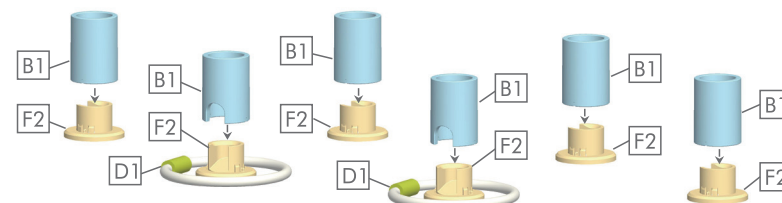


F3
TRACK HOLE COVER

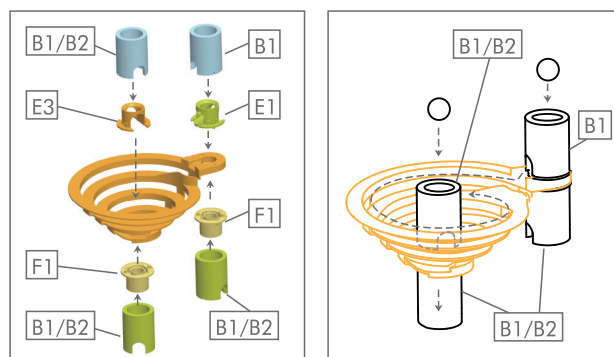


• INSTALLATION STEP

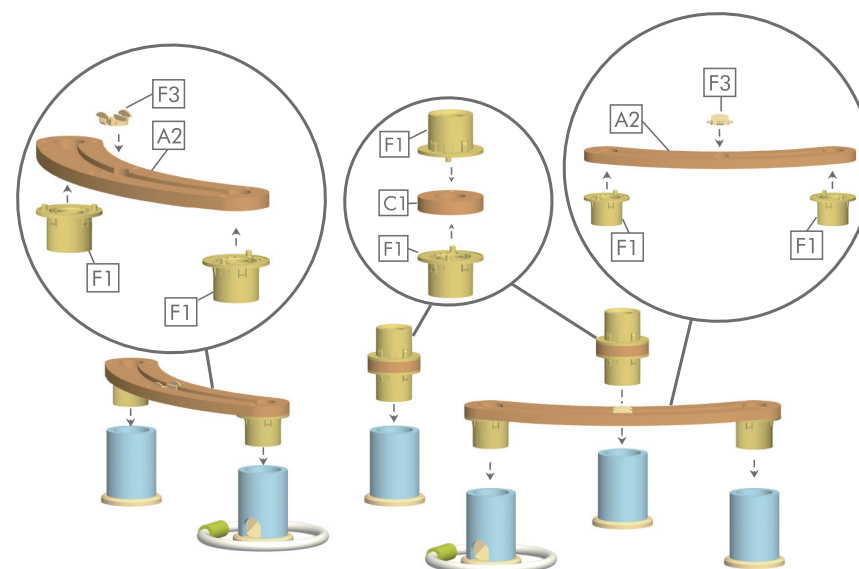
- 1 Insert B1, D1, F2 into the corresponding positions as shown in the figure.



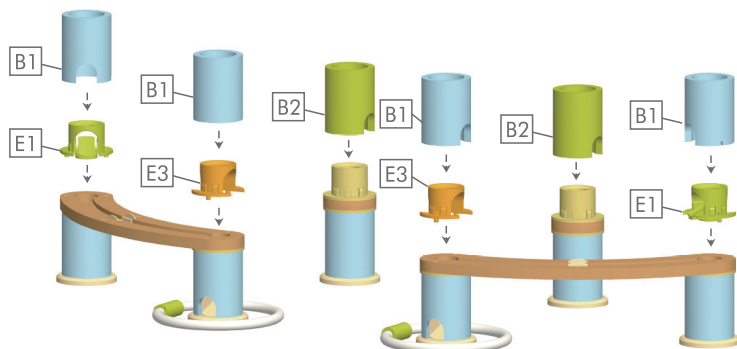
G1
SPIRAL



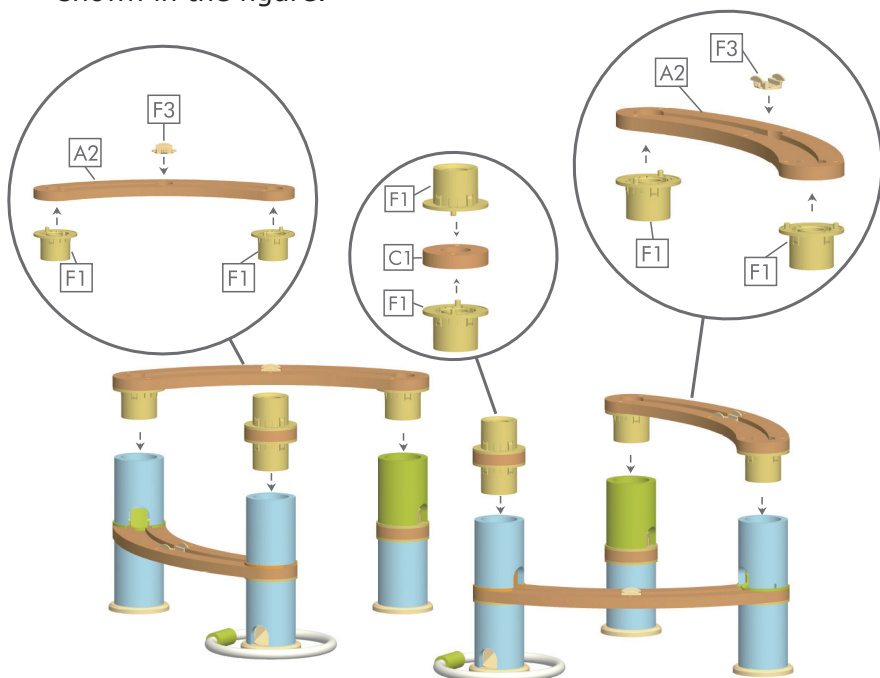
- 2 Insert A2, C1, F1, F3 into the corresponding positions as shown in the figure.



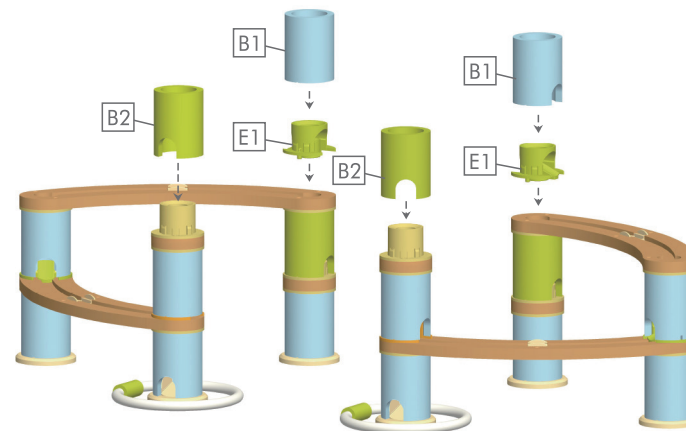
- 3** Insert B1, B2, E1, E3 into the corresponding positions as shown in the figure.



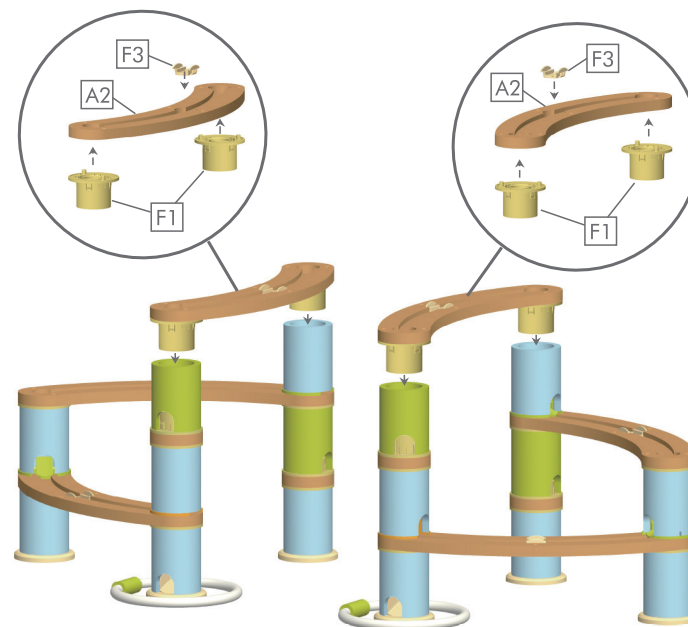
- 4** Insert A2, C1, F1, F3 into the corresponding positions as shown in the figure.



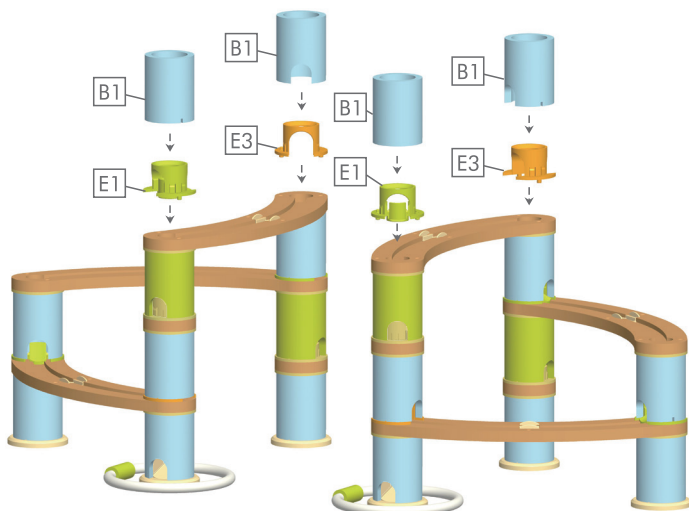
- 5** Insert B1, B2, E1 into the corresponding positions as shown in the figure.



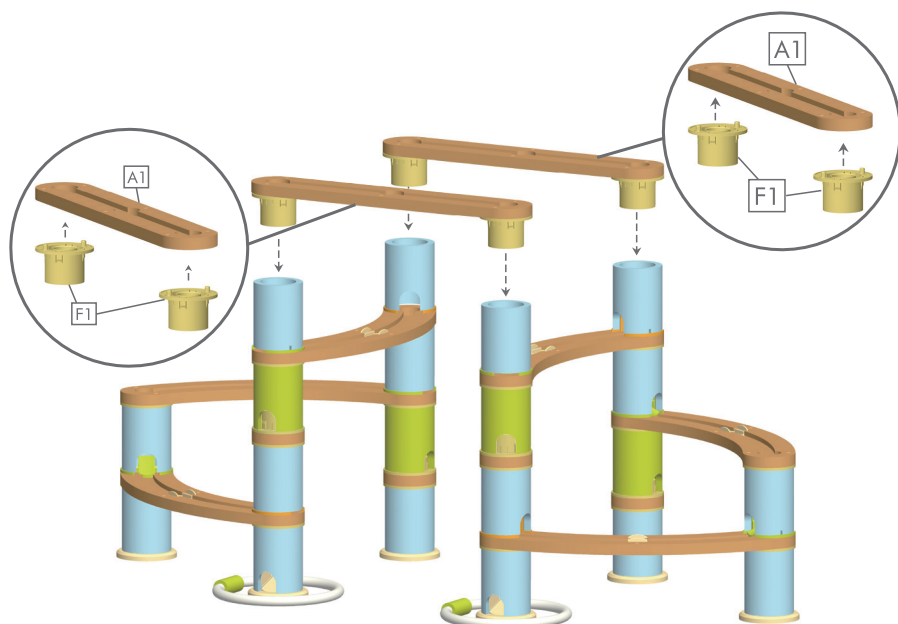
- 6** Insert A2, F1, F3 into the corresponding positions as shown in the figure.



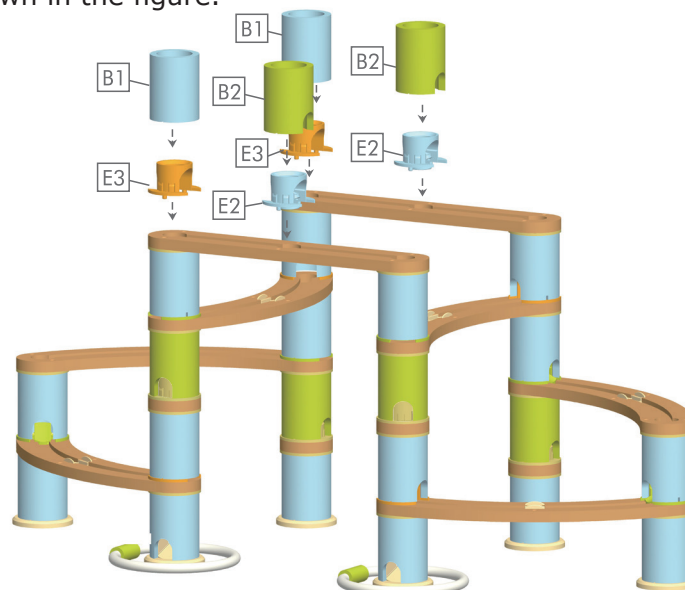
- 7** Insert B1, E1, E3 into the corresponding positions as shown in the figure.



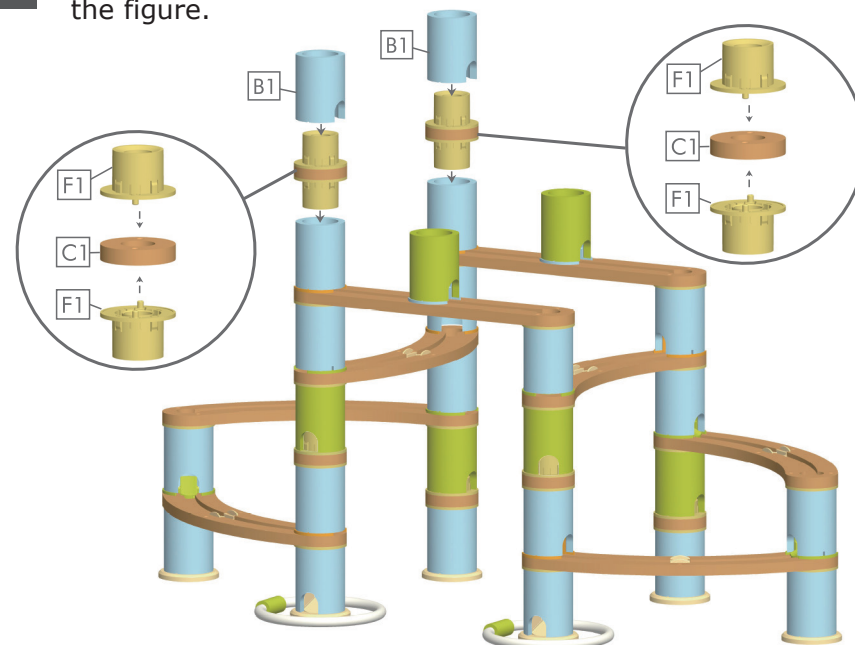
- 8** Insert A1 and F1 into the corresponding positions as shown in the figure.



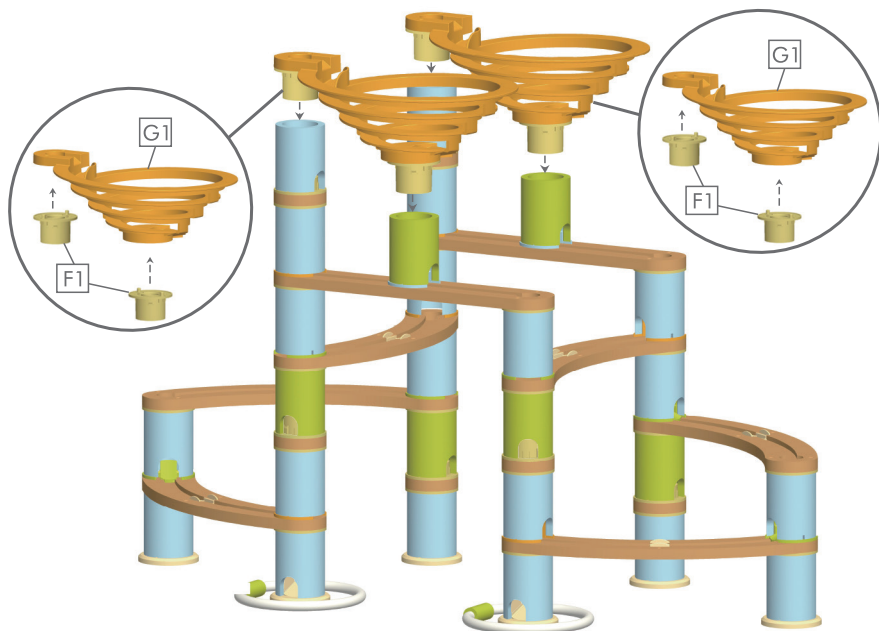
- 9** Insert B1, B2, E2, E3 into the corresponding positions as shown in the figure.



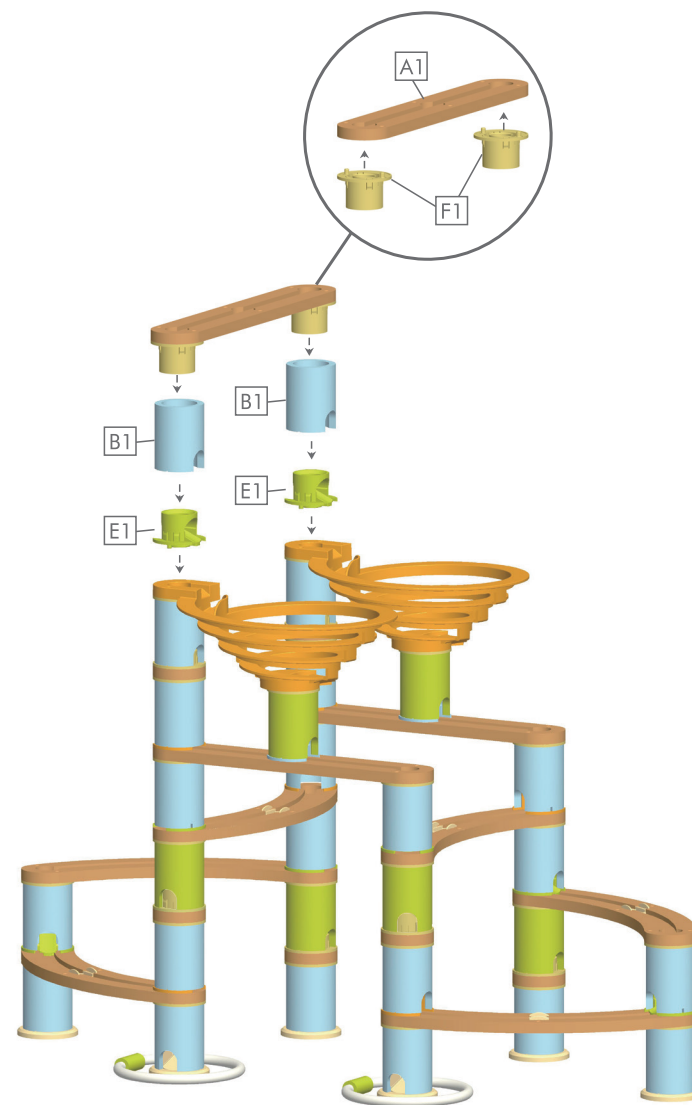
- 10** Insert B1, C1, F1 into the corresponding positions as shown in the figure.



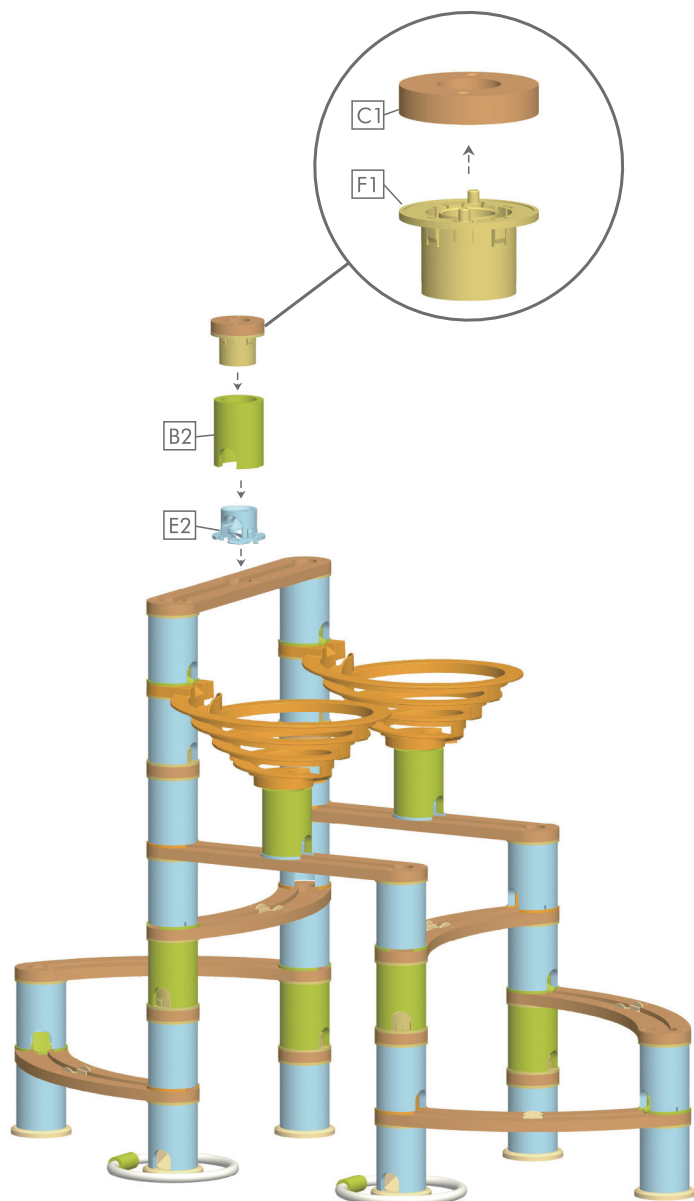
- 11** Insert F1 and G1 into the corresponding positions as shown in the figure.



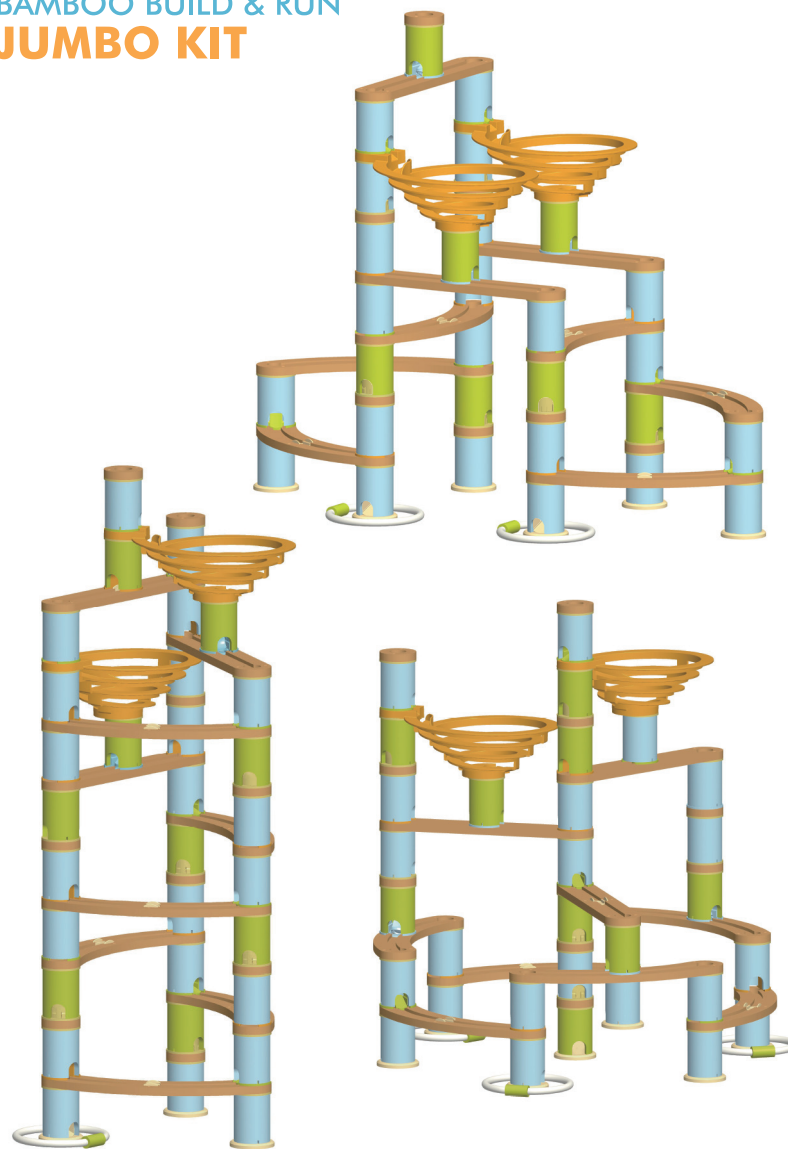
- 12** Insert A1, B1, E1, F1 into the corresponding positions as shown in the figure.



- 13** Insert B2, C1, E2, F1 into the corresponding positions as shown in the figure, and the assembly is completed.



BAMBOO BUILD & RUN JUMBO KIT



Endless possibilities for different configurations according to the kids imagination.