



With your inspiring rating, Costway will be more consistent to offer you  
EASY SHOPPING EXPERIENCE, GOOD PRODUCTS and EFFICIENT SERVICE!

US office:Fontana

UK office:Ipswich



**USER'S MANUAL**  
**Kids Electric Ride on Car**  
**TQ10009**

SLS AMG children Cars specifications:

Welcome to use our children cars.To ensure you can use the cars correctly.Read through this manual before use.

**I.Rule specifications**

Description: Battery operated children car

Item NO.: SLS AMG

Player's age: for children aged from 37 to 72 months.Please ensure the child use this car under adult's supervision.

Size: 43.5"x21.5"x18"

Net Weight: 20 LBS Weight Capacity: 44 LBS

Ambient temperature:0-40℃

Battery:6V 4.5AH,closed dry battery

Main material: plastic

Speed: 3.4Km/h

Motor: DC 6V

Charging: charging 8-12 hours to provide about 1 hour working –energy.Do not charge over than 16 hours at a time.

Battery: about 300 times of charging.

Charger: Input:100-240V,50/60Hz , Output:6V (Equipped with customer's need)

**II.Assembly of the parts and components (Show in figure 2)**

- 1.Install front wheels:first install(1#) gasket on front axle,spread the lubricant ,then install the wheel (2#) ,put a gasket(1#) outside the wheel and use the (3#) to lock it.(You can install more gasket if the wheel is not firm enough)
- 2.Install the right back wheel :Spread the lube,put the wheel (2#) on.After connecting the rotor part, put a (1#) outside the wheel then use the (3#) to lock it.(You can install more gasket if the wheel is not firm enough)
- 3.Install the left back wheel: through the gasket(1#) into the axle ,spread the lubricant on,put on wheel (2#) and another gasket(1#) outside,then use the (3#) to lock it. (You can install more gasket if the wheel is not firm enough)
- 4.Install the wheel cover: put the wheel cover (4#) on the wheel,press it till a sound “klik” been heard is done.
- 5.First put 10# mirrors left and right sides, then car mirror at the corresponding jack the car body then beat into, preferably with two 3\*12 10mm self-tapping screw locked.
- 6 .Install battery and seat:①put the battery(5#) into the battery holder under the seat,connect the wires correctly (red wire as“+”and black one is “-”),use two tapping screw(Φ4\*12mm) lock it (6#). put the seat (8#) on the car body,then use one tapping screw Φ4\*12 mm lock it.

**VII.Safety specification:**

- 1.Not suitable for children under 37 months due to the small parts.The child can only use this car under adult's supervision.
- 2.Pay special attention:Do not let children touch the wheels or location near the wheel to prevent from hurt.Make sure other children keep away from the car when it is running.
- 3.The car shall be assembled by adult,or the adults must check the assembly before using.
- 4.The car is only available for driving on the flat ground.Do not drive it on the sand or rugged ground. Keep the car far from pool,highway,ramp,stair or other dangerous places.
- 5.The car can only be driven by one person;limit load is 20KG. Do not overload.
- 6.The batteries must be charging with the correct way as the instruction.
- 7.Do not change the forward or backward switch abruptly during the car running,stop the car before switch over;otherwise the drive gear box will be seriously damaged.
- 8.If the car is not used for a long time,please take the battery out of the car,and keep it away from fire,high temperature,and moist places.
- 9.Maintenance and care:The car includes electrical components,and please do not put it in the water or use it in the moist places,wipe it with wet cloth when cleaning.
- 10.The dismantled package of the car must stored in the place where the children could not reach, preventing from any sudden danger.
- 11.The safety belt enclosed is only a toy increasing the children's safety awareness;it doesn't have the safety protection function as the adult's vehicle.
- 12.Please teach the children how to relax and start the accelerator pedal,how to deal with the barriers when problems happen and how to stop the car.
- 13.Before the child playing the car,the adult must read through the manual,teach the children how to use the car correctly,and please retain the manual using.

Germany Benz car company gave authority Guangdong Qunxing toys joint-stock co.,ltd. to produce and sale this product.

This manual contains important information,must be reserved.

*5 Star Rating*



We would like to extend our heartfelt thanks to all of our customers for taking time to assemble this product and giving us valuable feedbacks.

THANK  
you  
😊

- 1.The charging port is at the front bottom side of the seat,make sure the voltage specification complying with the marks on the charger before charging ,then insert the DC plug of the charger into the port,meanwhile ,the indicating lamplight on and charging start.
- 2.Charging time:8-12m hours for each time.
- 3.During charging .the charger and battery shall be slightly at normal.Otherwise ,the charger or the battery maybe damaged.
- 4.In order to extend the service lifetime of the batteries ,please charging in time when the batteries are exhausted,if you want to store the car up for a long time,fully charging the battery before store it and charge it again every three months.
- 5.Only the charger and batteries which has recommended by the factory can be used.
- 6.The charger and batteries are not for play as toy.
- 7.The battery can only be charged under adults' supervision.
- 8.Do not throw the battery into the water ,fire or dismantle it,prevent human body from touching the leakage liquid of the battery.
- 9.if any smoking ,smelling or noising when running ,please stop and get out of the car immediately in order to avoid fire burn ,electric shock,extract the plug and send it for repair.
- 10.Do not use the car during charging ,and must make sure the general power supply has cut off.

#### VI. Troubleshooting Guide:

(The power of the car must be cut off before repair it,otherwise other functions of the car may be damdaged)

##### 1.When the car cannot run:

- (1) Check the forward/backward switch,the car cannot run when this switch set on middle.
- (2) Check the car overload or not.
- (3) Check whether the car is under long time driving,overload driving or short circuit failure to make auto power-off protection system cut off the power,the car can be reused after the failure is eliminated.
- (4) Check the power supply connects or not.

##### 2.Slow speed during driving:

- (1)Please recharge the battery when it is lack of power.
- (2)Check whether it is overload.
- (3)Check whether the battery is aged or the capacity is insufficient,and replace a new battery
- (4)The motor brush is abraded or other inners malfunction,please replace the motor.

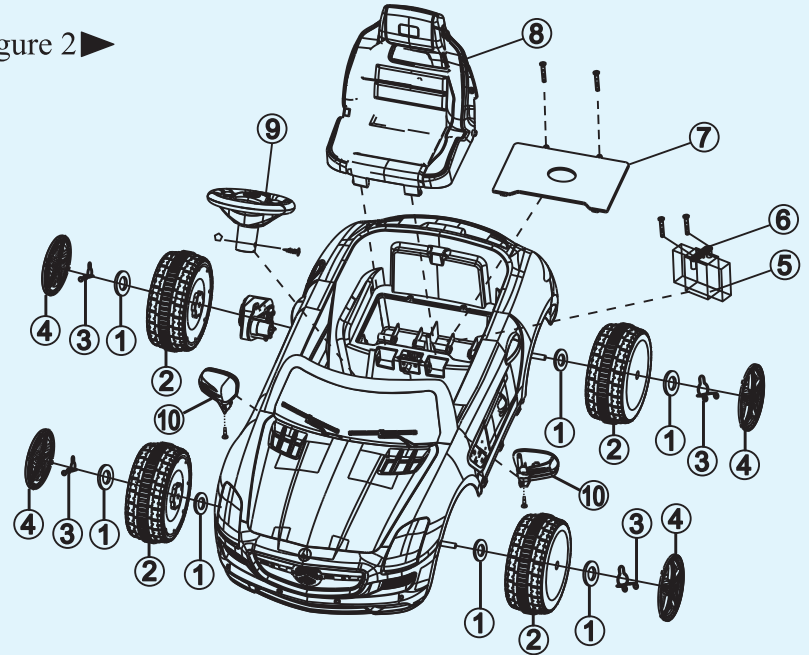
##### 3.The batteries cannot be charged fully.

- (1)Check whether the wire connecting of the battery is break off,and connect it again.
- (2)Check whether the charger or the battery is damaged.

##### 4.No music or low volume:

Check the steering wheel is connecting well or not.

figure 2 ►



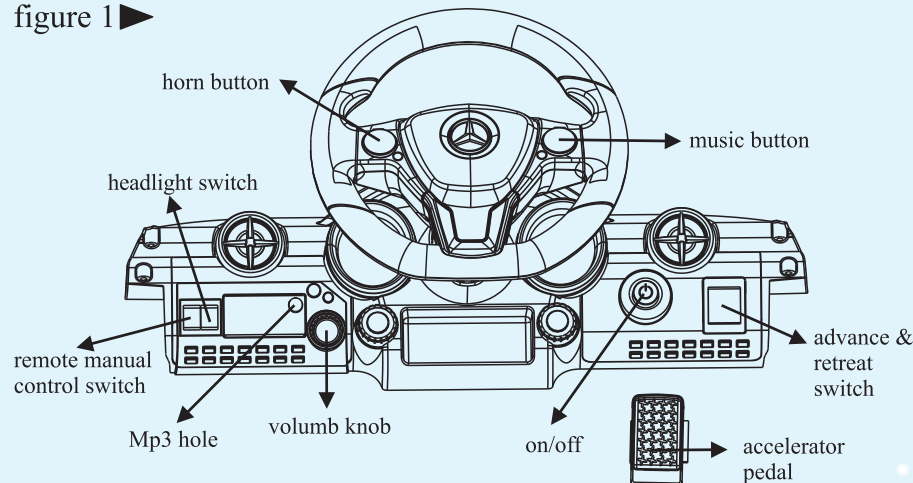
- 7.Install the steering wheel: insert the steering wheel (9#) in the steering rod.Align the side crew holes, lock them with oneΦ5\*37 mm and nut with cap(M5),and connect the wires at the same time.

#### III.Using instruction &function(show in figure 1)

After full assembly and correctly connection of wires ,and the battery was installed,this car has the following function:

- 1.Use the car main power supply to start the switch, the power supply of the car will be activated and the car enters standby state.
- 2.Second switch 1 on the left of the panel is light control switch,when the switch set “-”,the light in the front will be lighted up.
- 3.First switch of the left side of the panel:function:①this switch convert the car between R/C

figure 1 ►

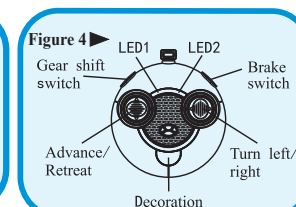
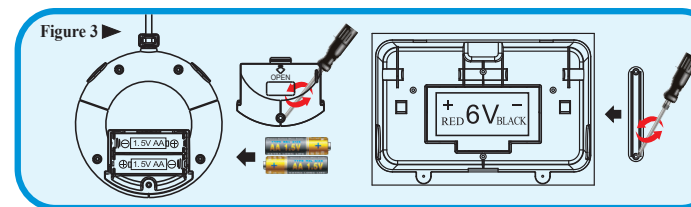


(remote control) and B/O(battery operate)mode. When the switch set in R/C position, the car can control by remote controller and the accelerator pedal. if the switch at the B/O position, the car can only control by the accelerator pedal.

4. Running function: After the car enters standby state, when the switch of right side on the pedal set in "advance", the car will running forward when you stepping on the accelerator pedal set in "retreat", the car will running backward when you stepping on the accelerator pedal. Set the switch in the middle, the car can not move when you stepping on the accelerator pedal. (If the car has remote control function, you can also control the car with controller)
5. Music: lightly touch the buttons on the steering wheel, you can hear sound of horn turning warnings and other lovely music.
6. The remote control machine need two AA 1.5V dry batteries, with remote control distance not far than 30M. Remote control rate about 2.4G.
7. This car installed with auto power-off protection system, when the car was broken down (overload or short circuit etc.) it will cut off the power supply immediately, then you need turn off the car at least 2 minutes, then the protection system will resume by itself, otherwise, you need fix up the damage of the car before you start it.

#### IV. Battery using and attention

1. B/O children car use one 6V, 4.5AH rechargeable batteries seal dry cell; Remote controller needs 2"AA 1.5V" alkaline non-rechargeable batteries.
2. Please put or take out the batteries according to the assembly graphic description. (show in figure 3)
3. The non-rechargeable batteries cannot be charged.
4. The rechargeable batteries are only to be charged under adult supervision.
5. Do not mix different type of battery or old and new battery, only same type battery of the recommended type battery can be used.
6. Pay attention to the polarity of the battery when put or replace the battery, it must be put in the correct polarity.
7. The spent battery should be taken out of the car.
8. Power supply terminals cannot be short circuit.
9. User need to check the end of the wire, plug, shell and the relevant componts regularly, stop using when the damage is found until it is repaired.
10. Do not break the remote antenna to avoid any damage.



#### Instructions for remote control (see figure 4 )

1. Coding: First time to code need to open the power, then convert the R/C switch on the left side of the panel (Remote control mode) Insert two 1.5V "AA" batteries on the remote controller to initiate using at the same time. Turn on the car's power switch then the remote controller. When the power light of the controller is flashing, press any of the keys and hold for 3 seconds, if the light changed to non-flashing, that means the coding is successful and the controller is ready for operation.
2. Function of the remote controller: advance, retreat, turn left, turn right, brake and gear shift.
3. Pressing the remote controller gear shift (PYM) button can change the car speed.
4. If the remote controller or the car's CPU is changed, you should repeat the first step (coding)

#### V. Charging methods and note

The capacity of the storage battery has been full loading as specification when leaving the factory, however the battery, should be charged again before initial use to ensure the steady voltage. The speed of the car shall slow down even stop when the battery exhausting. Please charge the battery according the following methods and requirement: