

USER'S MANUAL
Children Tricycle
TY580328

THIS INSTRUCTION BOOKLET CONTAINS **IMPORTANT** SAFETY INFORMATION. PLEASE READ AND KEEP FOR FUTURE REFERENCE.

Please give us a chance to make it right and do better!
Contact our friendly customer service department for help first.
Replacements for missing or damaged parts will be shipped ASAP!

Follow Costway
Visit us: www.costway.com



Contact Us!

Do NOT return this item.

Contact our friendly customer service department for help first.



Before You Start

Please read all instructions carefully and keep it for future reference.

Warnings:

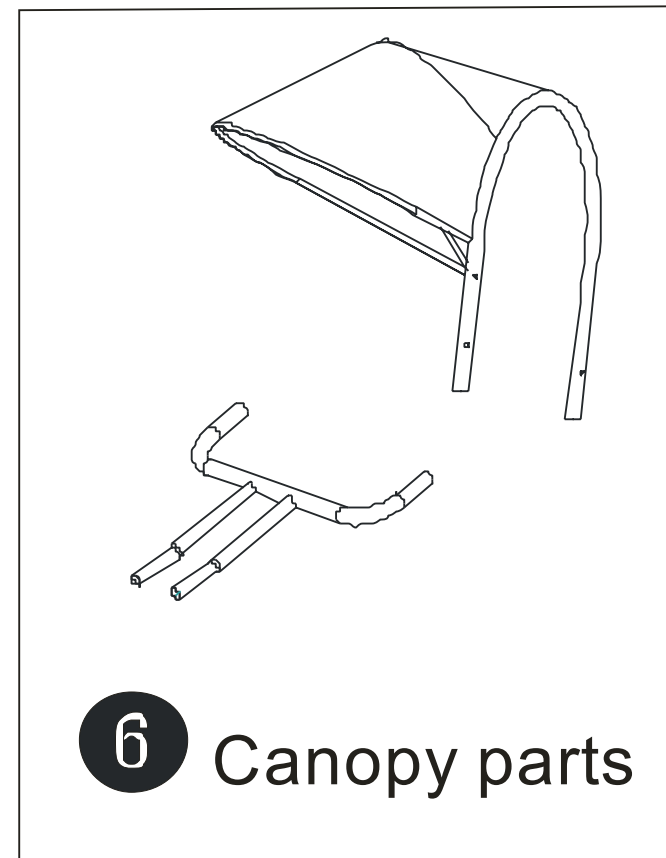
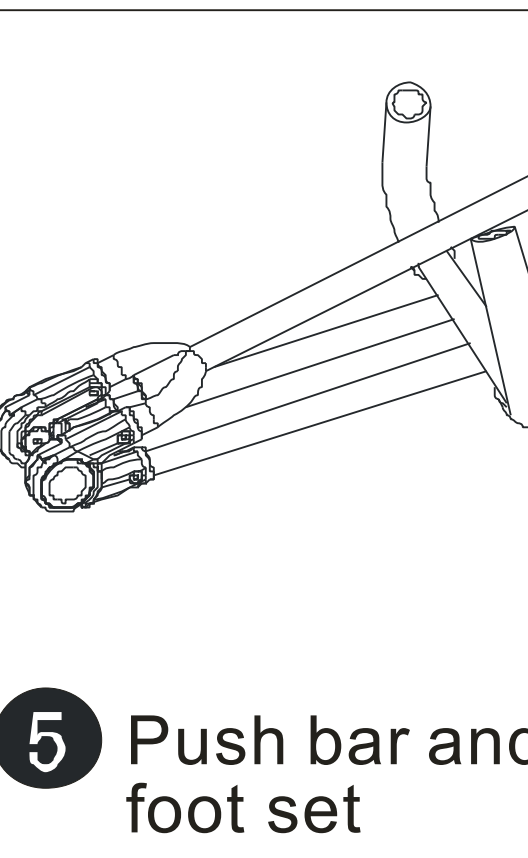
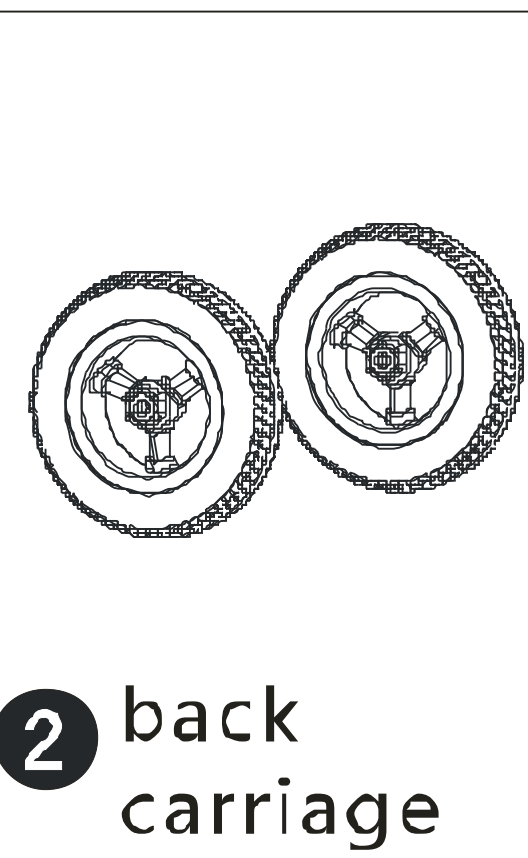
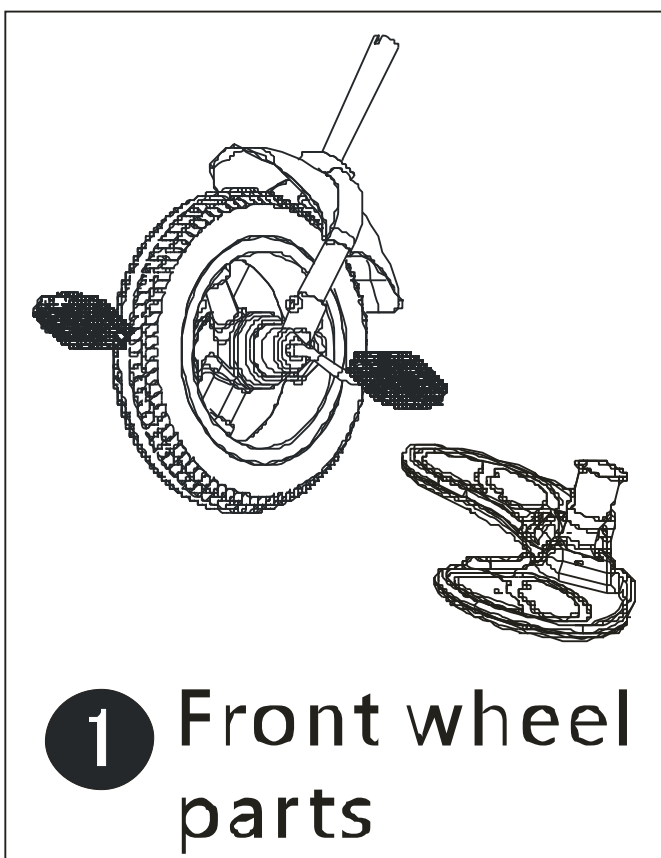
Attention! Use it with protective equipment.

Attention! Not use it in the traffic.

General Warnings:

- △ The product must be installed and used under the supervision of an adult.
- △ Read through each step carefully and follow the proper order.
- △ Remove all packaging, separate and count all parts and hardware.
- △ Please ensure that all parts are correctly installed, incorrect installation can lead to a danger.
- △ We recommend that, where possible, all items are assembled near to the area in which they will be placed in use, to avoid moving the product unnecessarily once assembled.
- △ Ensure a secure surface during construction, and place the product always on a flat, steady and stable surface.
- △ Please use the product carefully, as the product requires great skill, avoid accidents by the user or others, by fall or collision.
- △ Please wear suitable protective equipment during use, e.g. protective helmet, gloves, knee pads, elbow pads etc.

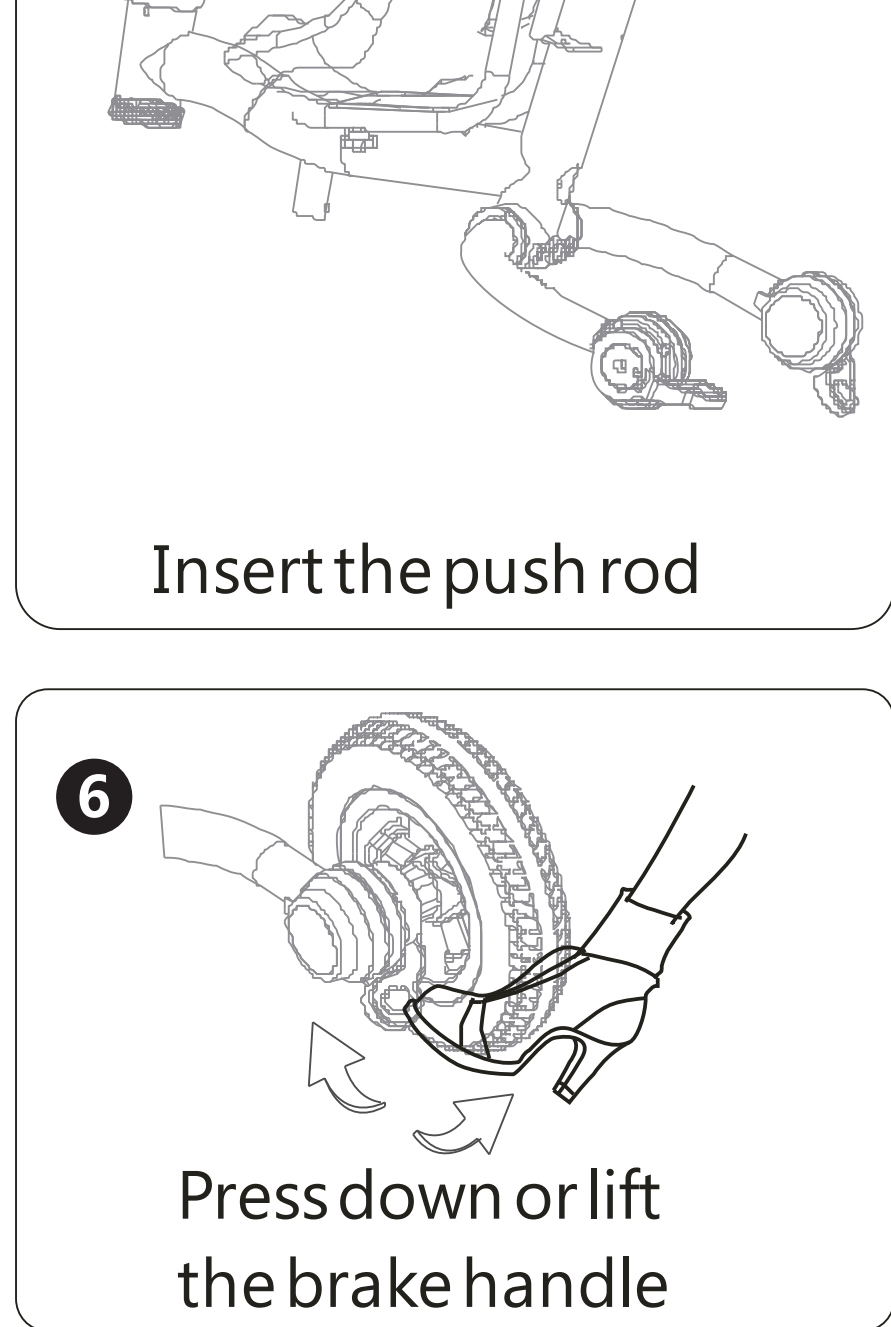
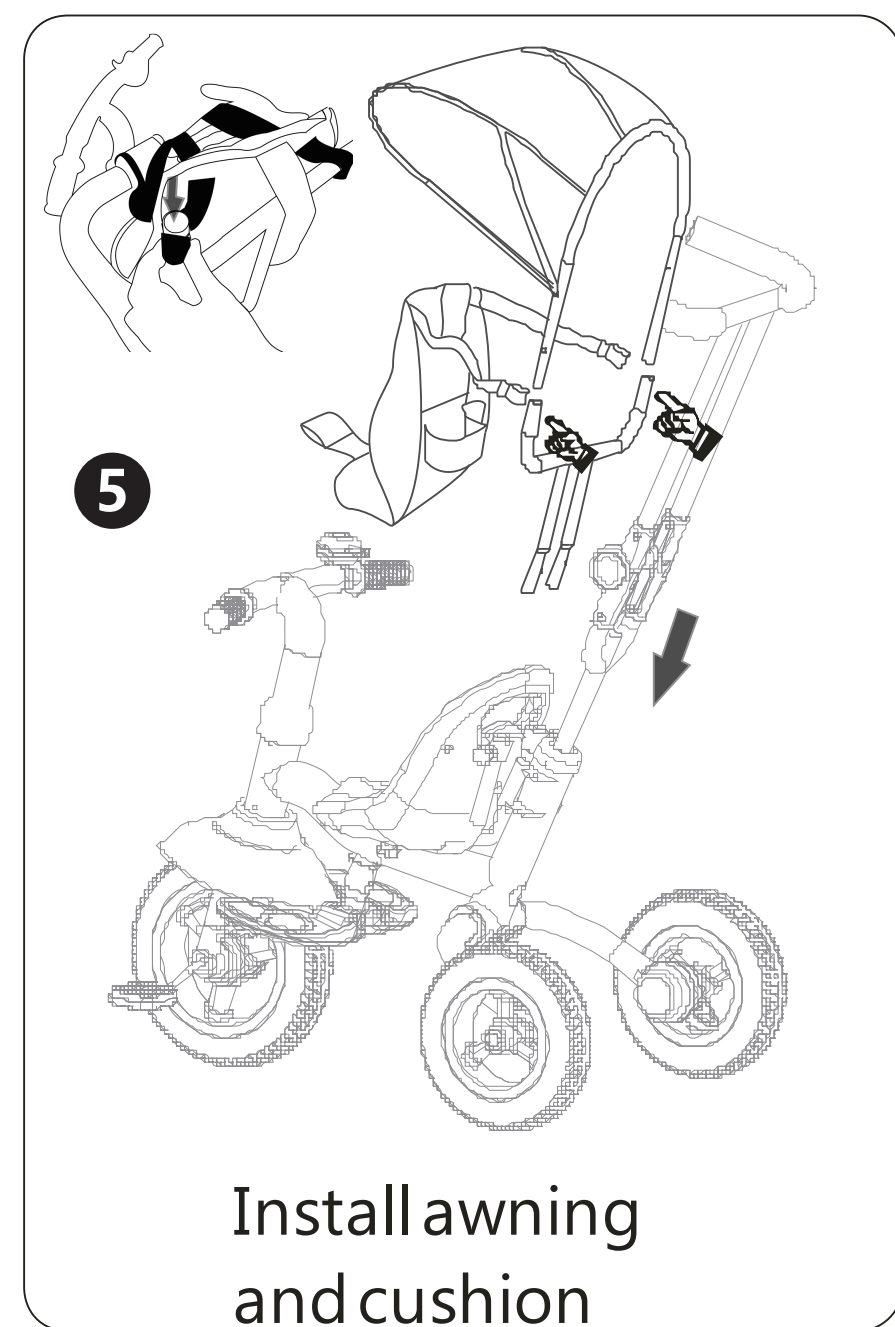
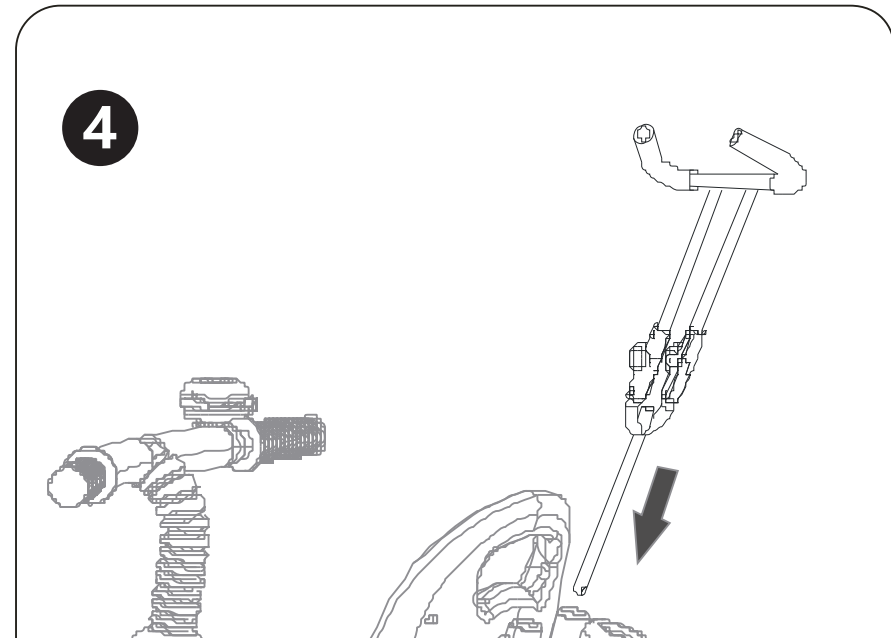
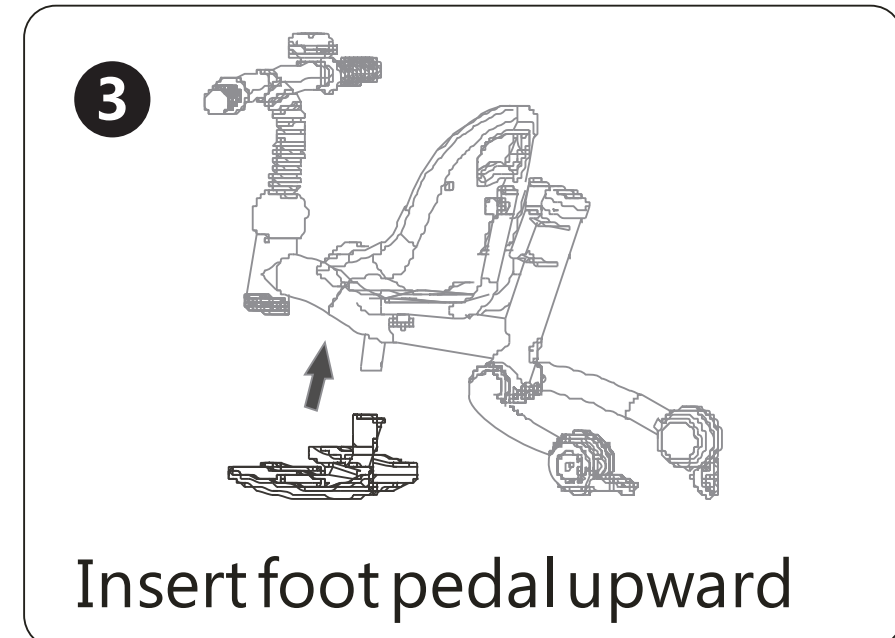
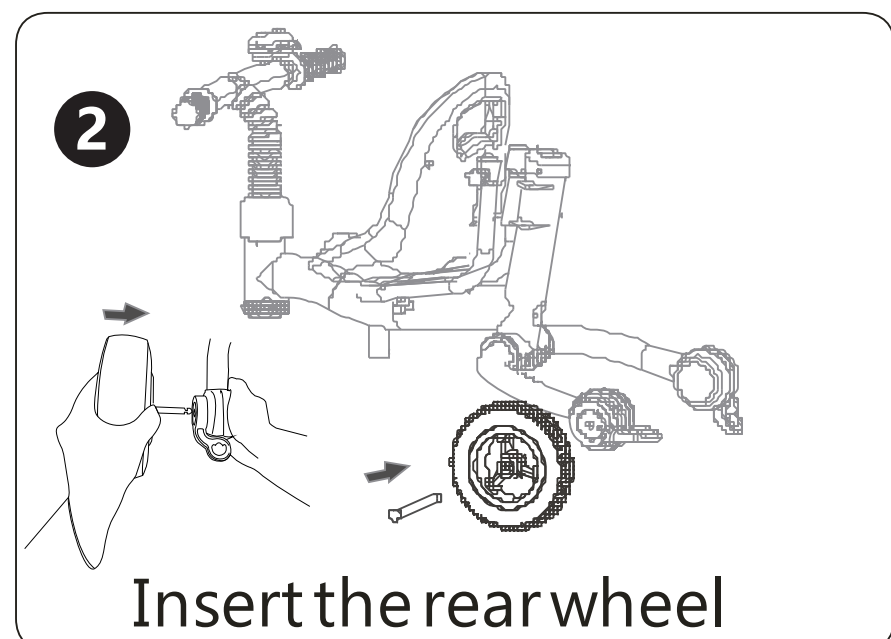
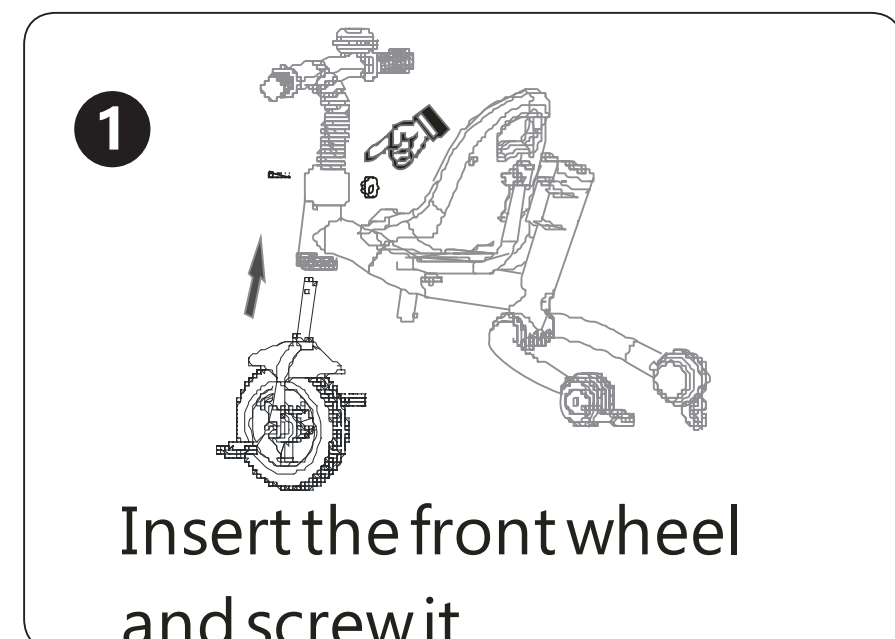
The vehicle parts figure



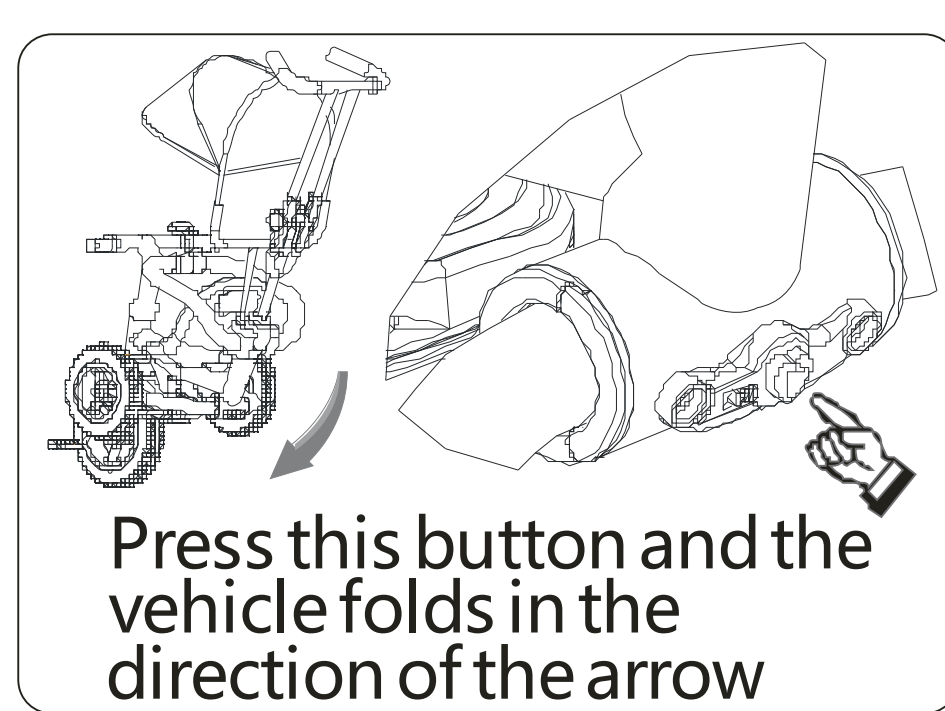
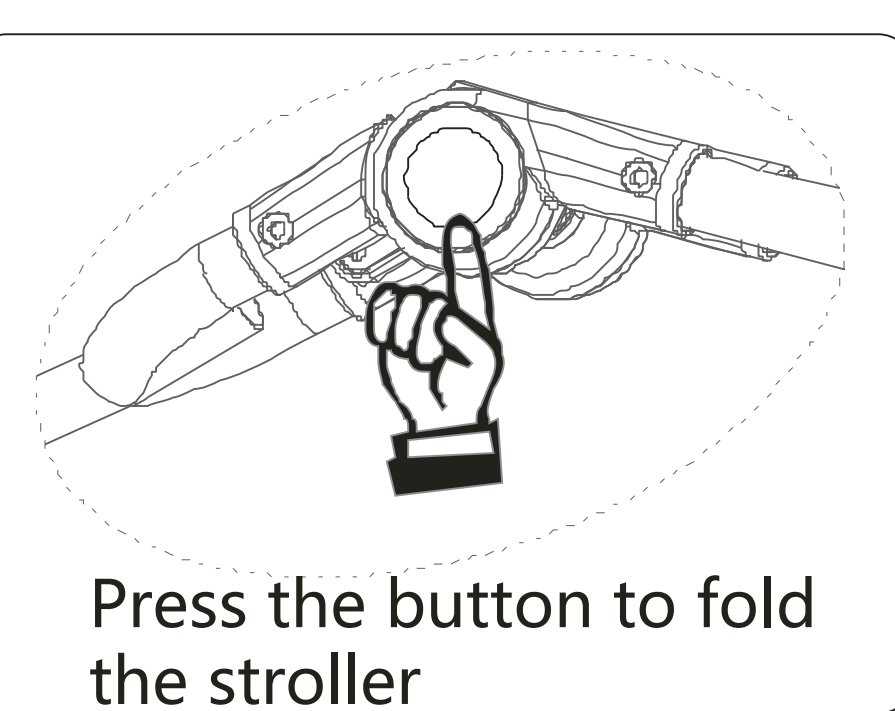
Warm prompt:The vehicle free tools installation

AGE	12-60months	N.W	24LBS
BEARING	55LBS	OUTER CTN SIZE	18.9*14.2*16INCH
HEIGHT	28-44INCH	MATERIAL	High carbon steel, PP/ABS plastic, Oxford cloth

Vehicle installation drawing



Operation Instructions



⚠ WARNING:

- ⊙ PLEASE ENSURE THAT YOUR CHILD LEAVES THE STROLLER WHEN FOLDING AND UNROLLING THE PRAM, OTHERWISE THERE WILL BE DANGER
- ⊙ ENSURE THAT ALL LOCKING DEVICES ARE PROPERLY LOCKED BEFORE USE.

⚠ WARNING:

- ⊙ THESE INSTRUCTIONS DETAIL THE SAFE USE, ASSEMBLY AND MAINTENANCE OF YOUR PRODUCT. PLEASE READ THESE INSTRUCTIONS CAREFULLY AND ENSURE THAT THEY ARE FOLLOWED AT ALL TIMES. FAILURE TO DO SO COULD RESULT IN SERIOUS INJURY OR DEATH.
- ⊙ SECURE THE CHILD IN THE HARNESS AT ALL TIMES AND ENSURE THAT THE SAFETY HARNESS IS ADJUSTED FIRMLY BUT COMFORTABLY TO THE CHILD'S BODY.
- ⊙ FINGERS OR PARTS OF THE BODY COULD BE INJURED WHEN FOLDING OR UNFOLDING THE STROLLER. USE WITH CAUTION.
- ⊙ IF YOU ADJUST THE STROLLER, MAKE SURE CHILDREN STAY AWAY FROM ANY MOVING PARTS OR THEY MAY GET HURT.

ATTENTION:

- ⊙ REGULARLY INSPECT ALL PARTS AND LOCKING DEVICES, PROMPTLY REPLACE WORN OUT OR BROKEN PARTS.
- ⊙ IT IS NOT SAFE TO USE ACCESSORIES OTHER THAN THOSE APPROVED BY THE VEHICLE MANUFACTURER
- ⊙ TO PREVENT THE RISK OF THE STROLLER CATCHING FIRE, DO NOT PARK IT NEAR AN OPEN FIRE, HEATER OR BARBECUE.

Push rod

Awning

Awning bracket

The seat cushion

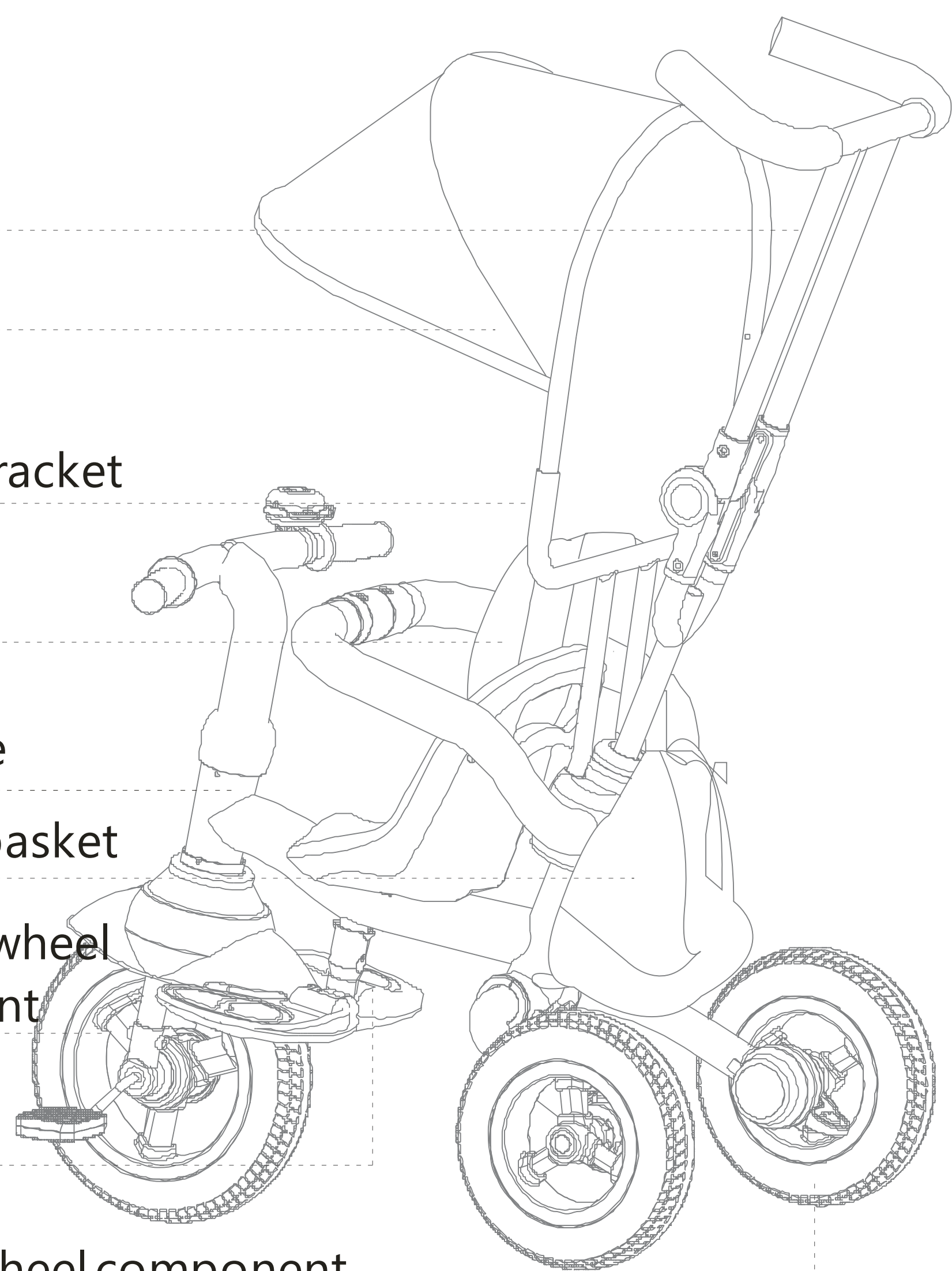
Cart frame

Carrying basket

The front wheel component

Footrest

The rear wheel component



Attention:

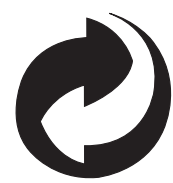
- Follow the installation carefully and keep it for reference. Strictly follow the installation to use the products.
- The products should be installed by adults, strictly follow the installation picture to install the products.
- Not to use it on public streets since it is not public transportation.
- Use it under the guard of the adults.
- Shall be used on a flat, open, unobstructed space.
- Use by children aged from 12-60 months.
- Check out the car and make sure it is safe whenever use it.
- Maximum load 55LBS
- The footrest should be fold when the children use it.
- If the tricycle was damaged, should timely contact the sellers, it cannot be ride before **repairing the tricycle**
- Recommend efforts to drive the fastener shall be more than 100N/m, less than 240N/m.

⚠ WARNING:

The adult shouldn't leave the stroller when your baby seat in the stroller, keep away from fire!

Preservation and Repair (Maintenance and Repairs):

- Use the wrench and screwdriver to twist any loosening screw nut before using.
- In order to improve the life of the tricycle, please avoid overloading and using in wet environments.
- Use the tools to tighten the nuts when the screw loosens.
- The seat, steering and handle bar should be timely and tighten the screw loose nut.



Welcome to visit our website and purchase our quality products!

Your suggestions and comments for COSTWAY are really important to us! We sincerely solicit you to go back to our shop and leave a good rating in just a simple click. It would be quite encouraging if you could kindly do so like below:

★★★★★ Great products so far

February 24, 2019

Great products so far, Fast delivery, easy setup, and working without any issues.

With your inspiring rating, COSTWAY will be more consistent to offer you EASY SHOPPING EXPERIENCE, GOOD PRODUCTS AND EFFICIENT SERVICE!

US office: Fontana, California

UK office: Ipswich



- * Reward Points
- * Exclusive Customer Service
- * Personalized Recommendations
- * Permanent Shopping Cart
- * Order History

5 Star Rating



We would like to extend our heartfelt thanks to all of our customers for taking time to assemble this product and giving us valuable feedbacks.

